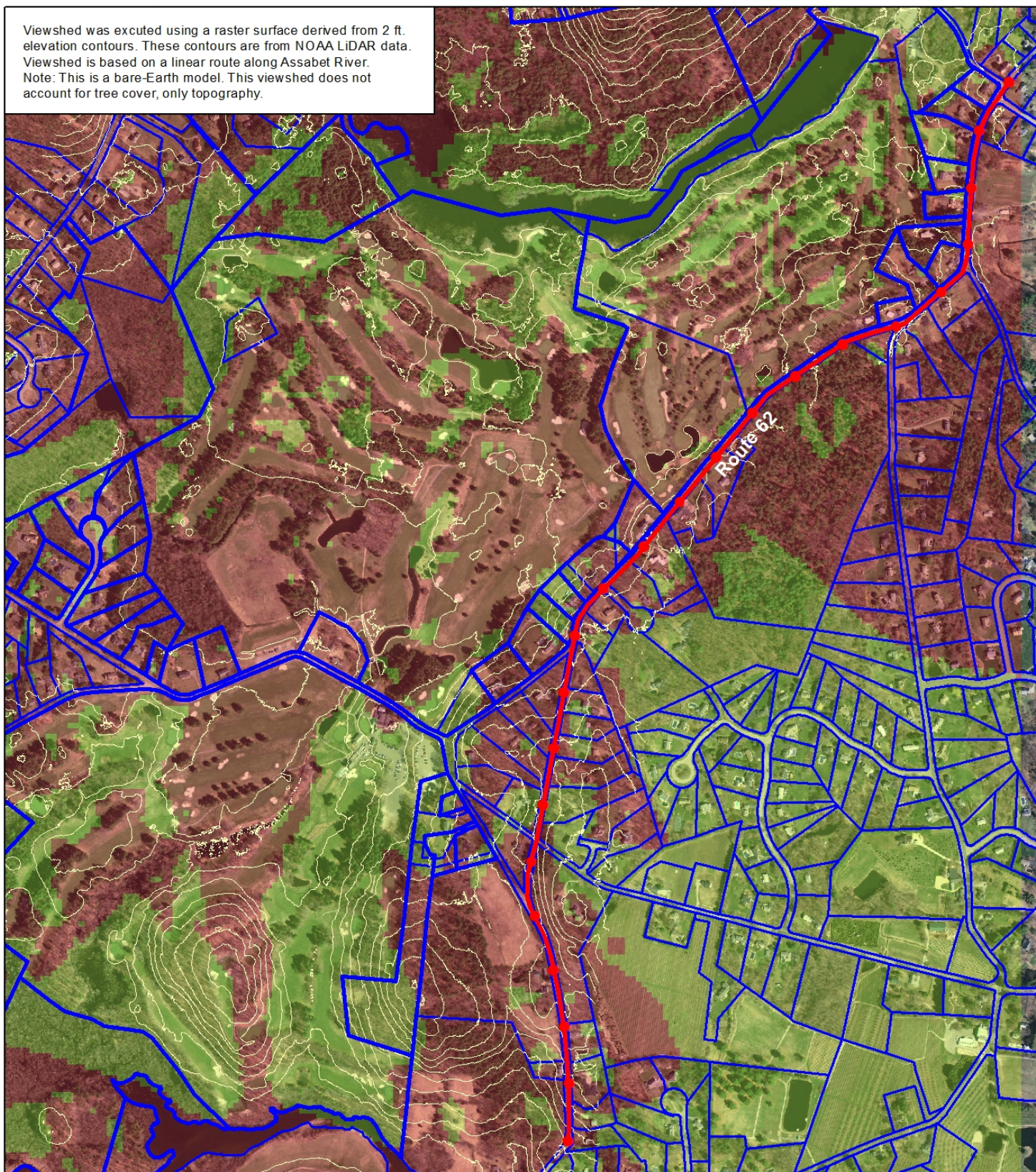
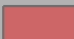





Viewshed was excuted using a raster surface derived from 2 ft. elevation contours. These contours are from NOAA LiDAR data. Viewshed is based on a linear route along Assabet River. Note: This is a bare-Earth model. This viewshed does not account for tree cover, only topography.



## Viewshed Results

 Likely Visible  
 Likely Not Visible

 Observer Location  
 10 ft topo contours

 Parcel Lines

0 300 600 Feet  
+++++