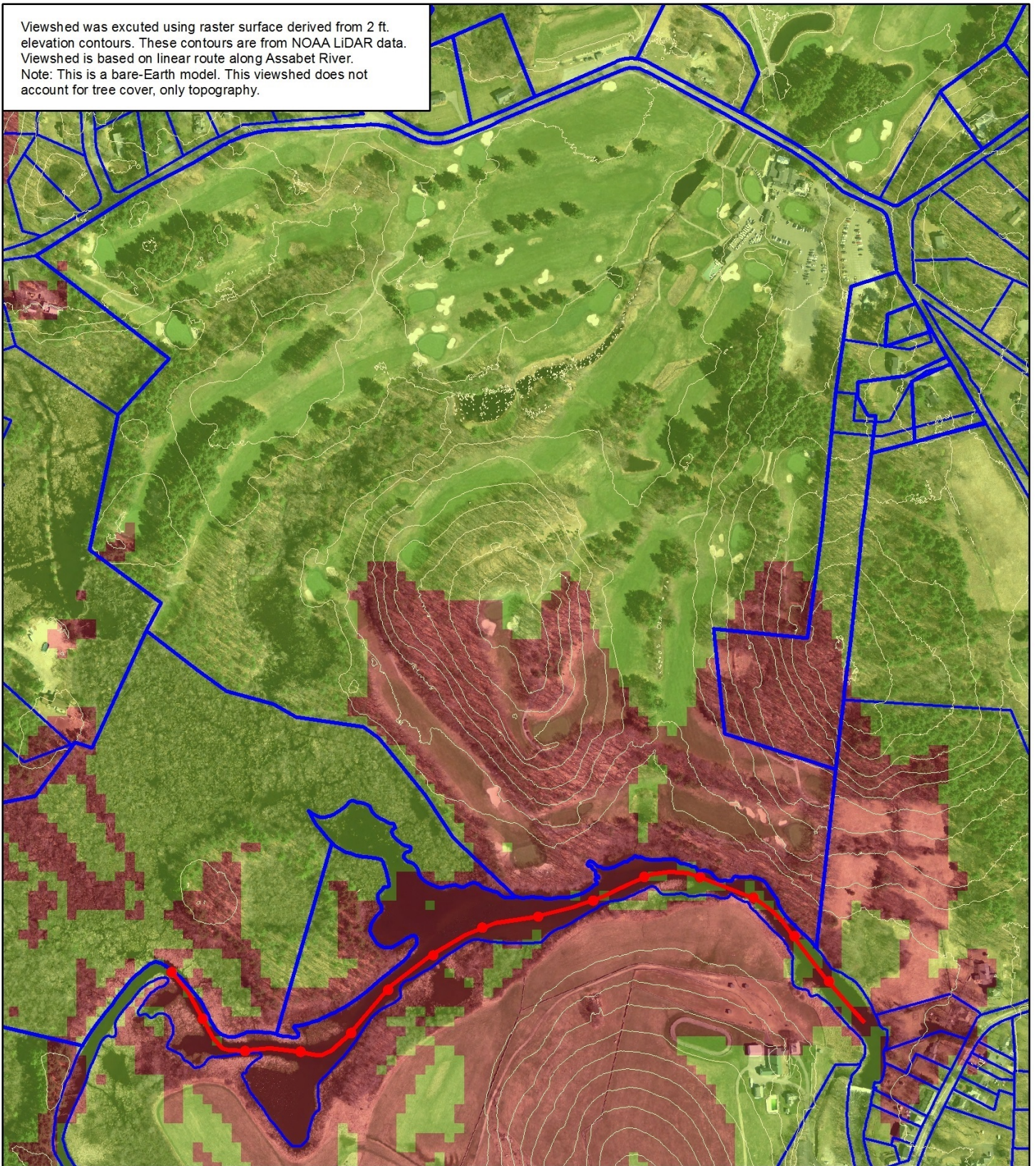



Viewshed Analysis 4/4/2019

Viewshed was excuted using raster surface derived from 2 ft. elevation contours. These contours are from NOAA LiDAR data. Viewshed is based on linear route along Assabet River. Note: This is a bare-Earth model. This viewshed does not account for tree cover, only topography.




Viewshed Results


 Likely Visible

 Observer Location

 Parcel Lines

0 300 600 Feet


 Likely Not Visible

 10 ft topo contours