

Article 44 - Box Mill Road Bridge Article 97 Petition Stow Conservation Commission

The Town is working with MassDOT on the design and reconstruction of the Box Mill Road Bridge over Elizabeth Brook. MassDOT requires the Town to take the necessary easements and rights-of-way for this state-funded project. Town Meeting voted to start this process last fall and meetings with affected landowners are ongoing.

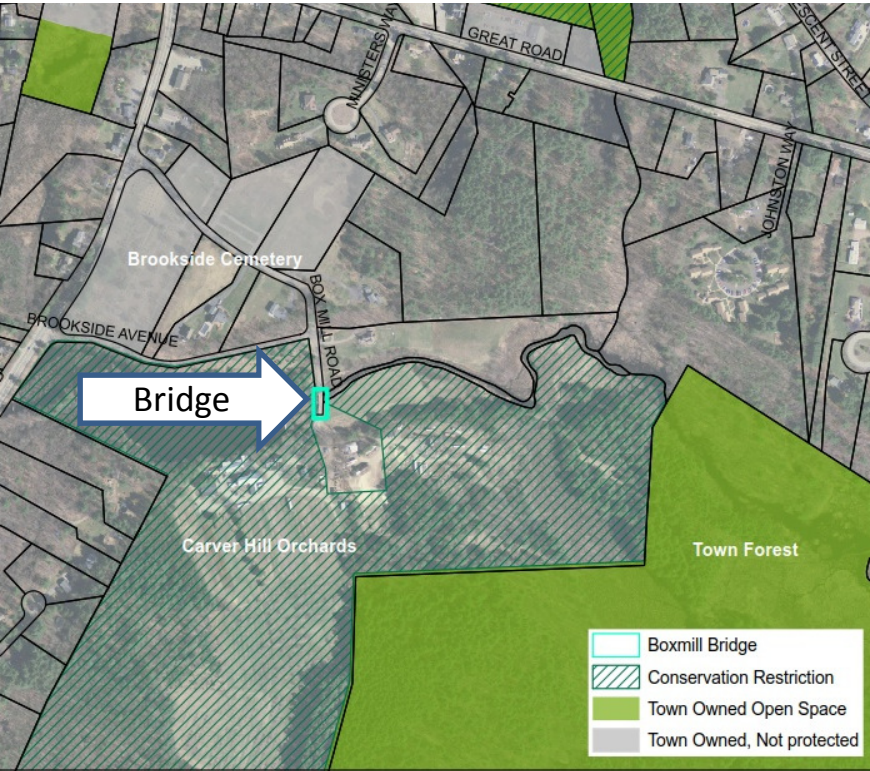
This article is a necessary pre-cursor to taking the easements and rights-of-way on the portion of the bridge on Carver Hill land. Passage would start the process of petitioning the Legislature to remove a small portion of the Carver Hill Conservation Restriction in the area of the construction and allow MassDOT to maintain the schedule for the construction funding. Because we don't yet have the final design plans and this is a lengthy process, the Article allows taking a *maximum* of 20,000 sq. ft. of land area within the Conservation Restriction. The 25% design plans actually depict of total of 11,500 sq. ft. This land is needed for overhead utilities, guardrails and construction of a temporary bridge. All parties involved have a goal of minimizing the affected area.

The loss of this conservation-restricted land will be mitigated (as required by the Commonwealth) by the conveyance of 1.15 acres of land at the intersection of Walcott Street and Hudson Road along Sandy Brook to the care, custody and control of the Conservation Commission. This is former tax title land already owned by the Town, undevelopable, and adjacent to other land that is proposed to be conveyed to the Conservation Commission as part of a future subdivision(see map on next page).

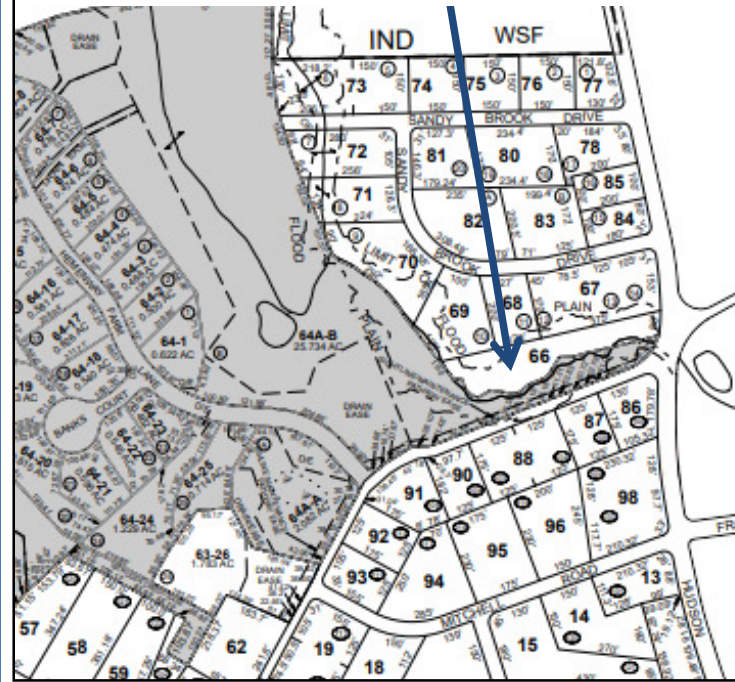
**Box Mill Road
Bridge**



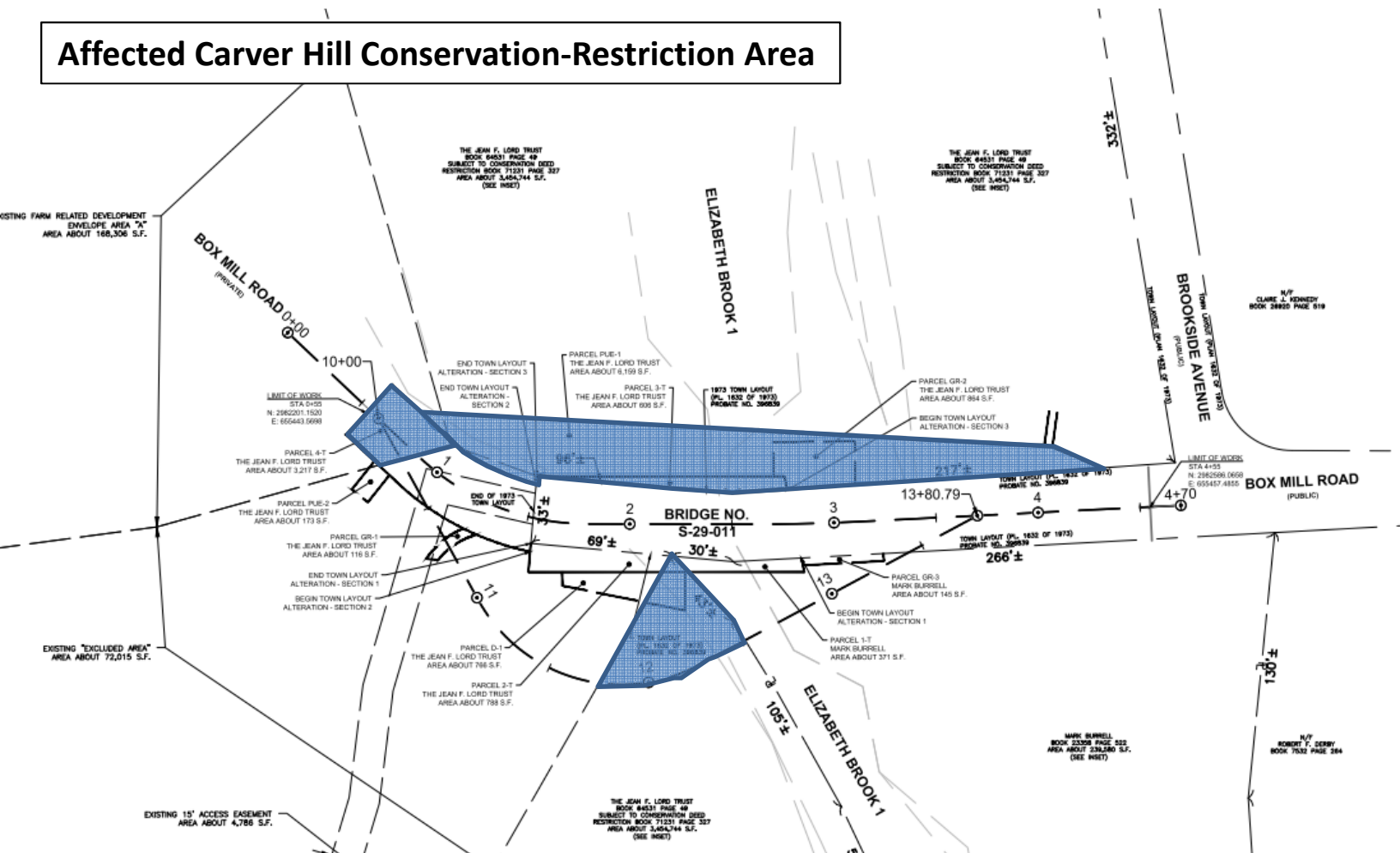
Box Mill Bridge Locus Map



Sandy Brook Mitigation Parcel Corner of Hudson and Walcott



Affected Carver Hill Conservation-Restriction Area



= Affected Areas within Conservation Restriction