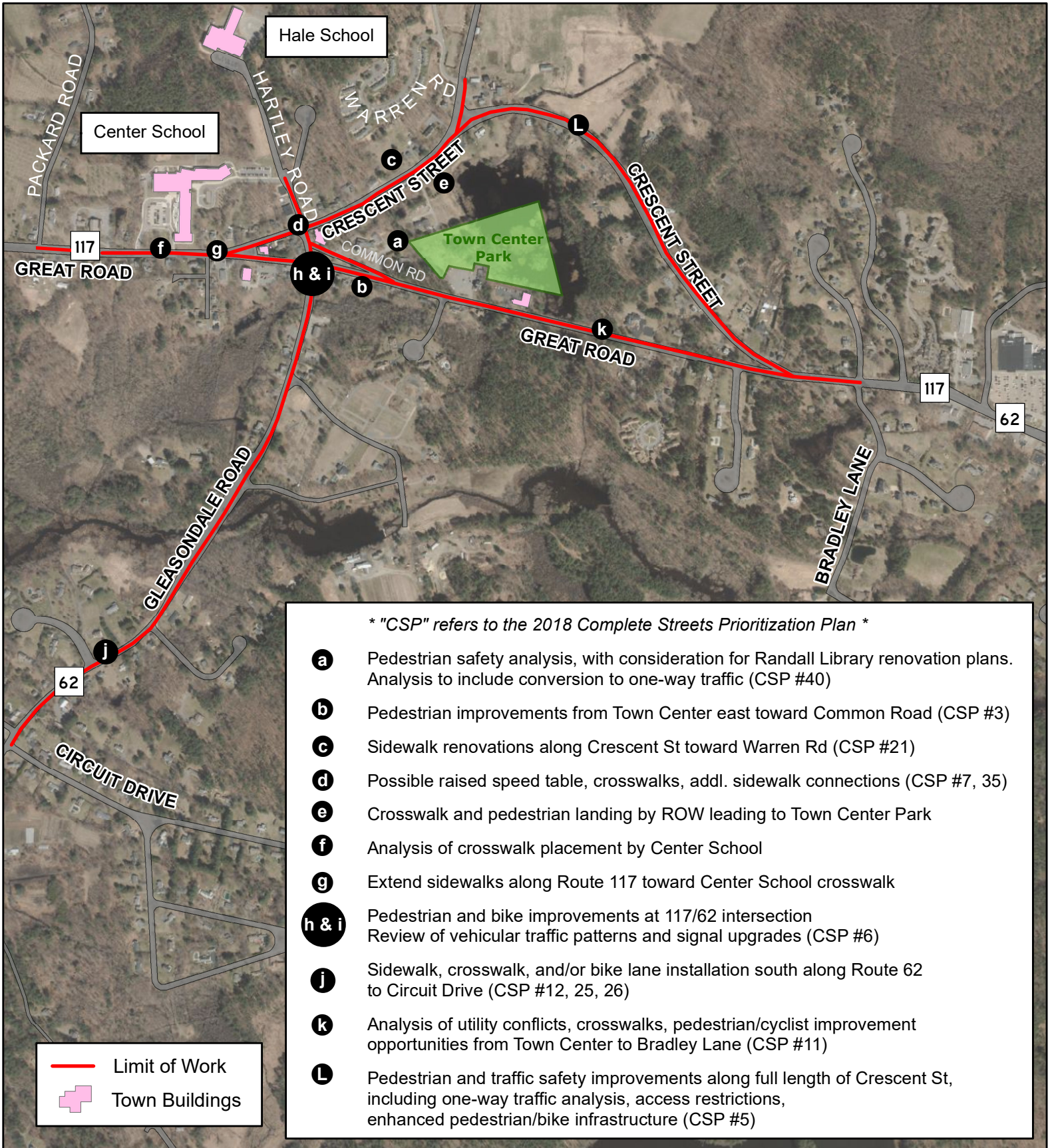




Stow Town Center

Pedestrian & Bike Safety Improvements



* "CSP" refers to the 2018 Complete Streets Prioritization Plan *

- a** Pedestrian safety analysis, with consideration for Randall Library renovation plans. Analysis to include conversion to one-way traffic (CSP #40)
- b** Pedestrian improvements from Town Center east toward Common Road (CSP #3)
- c** Sidewalk renovations along Crescent St toward Warren Rd (CSP #21)
- d** Possible raised speed table, crosswalks, addl. sidewalk connections (CSP #7, 35)
- e** Crosswalk and pedestrian landing by ROW leading to Town Center Park
- f** Analysis of crosswalk placement by Center School
- g** Extend sidewalks along Route 117 toward Center School crosswalk
- h & i** Pedestrian and bike improvements at 117/62 intersection
Review of vehicular traffic patterns and signal upgrades (CSP #6)
- j** Sidewalk, crosswalk, and/or bike lane installation south along Route 62 to Circuit Drive (CSP #12, 25, 26)
- k** Analysis of utility conflicts, crosswalks, pedestrian/cyclist improvement opportunities from Town Center to Bradley Lane (CSP #11)
- L** Pedestrian and traffic safety improvements along full length of Crescent St, including one-way traffic analysis, access restrictions, enhanced pedestrian/bike infrastructure (CSP #5)

