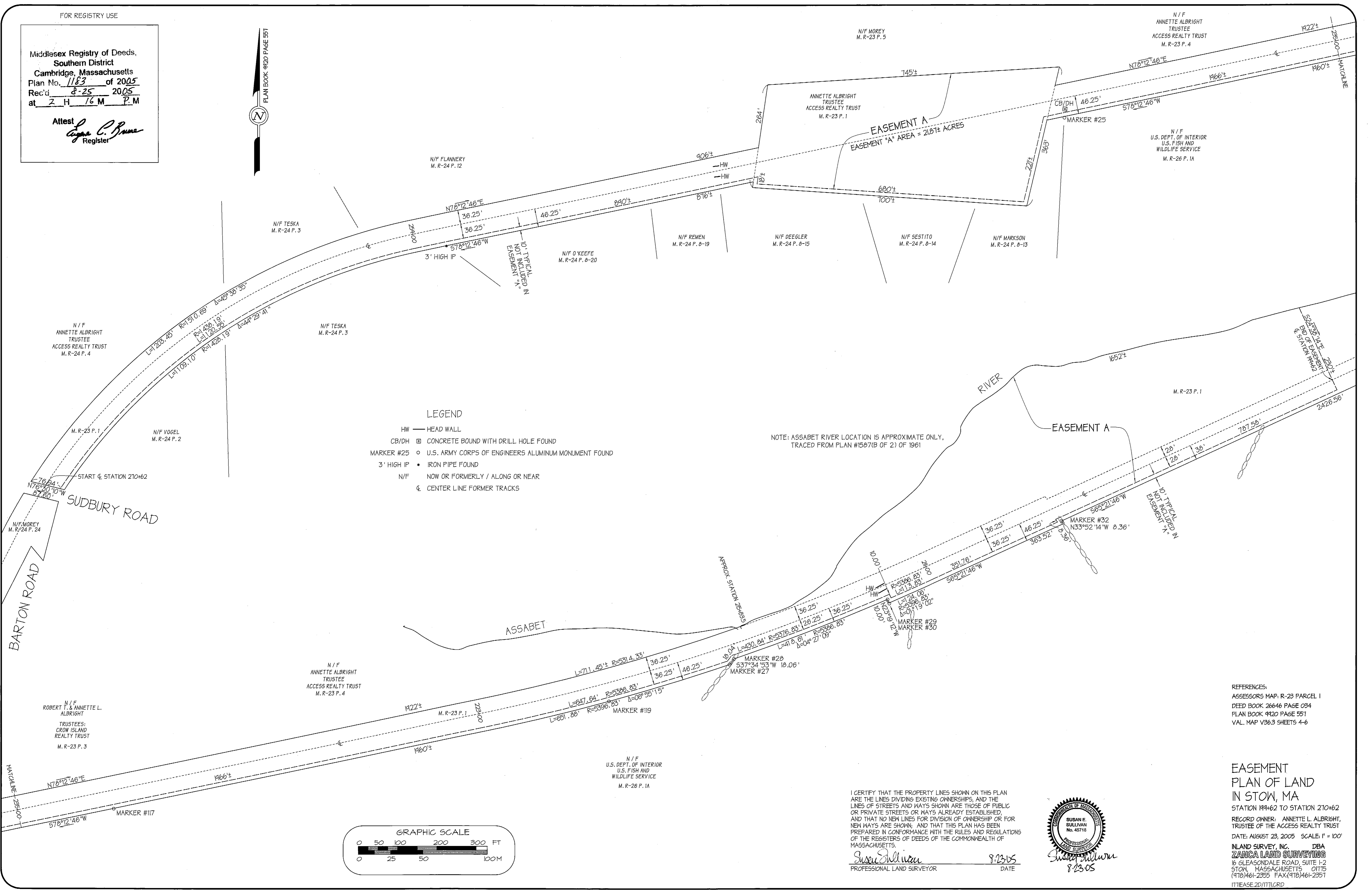


FOR REGISTRY USE

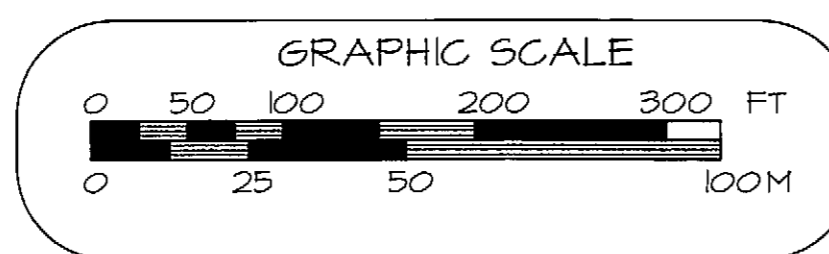
Middlesex Registry of Deeds,
Southern District
Cambridge, Massachusetts
Plan No. 1183 of 2005
Rec'd 8-25 2005
at 2 H 16 M P.M

Attest
Laura C. Burns
Register



LEGEND
HW — HEAD WALL
CB/DH □ CONCRETE BOUND WITH DRILL HOLE FOUND
MARKER #25 ○ U.S. ARMY CORPS OF ENGINEERS ALUMINUM MONUMENT FOUND
3' HIGH IP • IRON PIPE FOUND
N/F NOW OR FORMERLY / ALONG OR NEAR
℄ CENTER LINE FORMER TRACKS

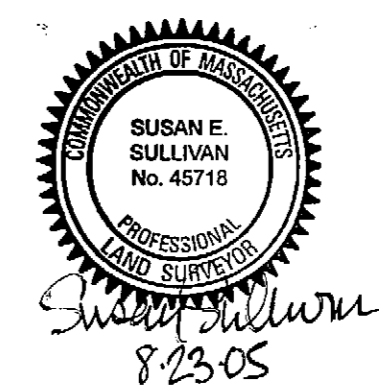
NOTE: ASSABET RIVER LOCATION IS APPROXIMATE ONLY,
TRACED FROM PLAN #1587(B OF 2) OF 1961



REFERENCES:
ASSESSORS MAP: R-23 PARCEL 1
DEED BOOK 26646 PAGE 034
PLAN BOOK 9420 PAGE 557
VAL. MAP V36.3 SHEETS 4-6

EASEMENT PLAN OF LAND IN STOW, MA
STATION 194+62 TO STATION 210+62
RECORD OWNER: ANNETTE L. ALBRIGHT, TRUSTEE OF THE ACCESS REALTY TRUST
DATE: AUGUST 23, 2005 SCALE: 1" = 100'
INLAND SURVEY, INC. DBA ZANCA LAND SURVEYING
16 GLEASONDALE ROAD, SUITE L-2 STOW, MASSACHUSETTS 01175
(978)461-2355 FAX:(978)461-2357
IT1EASE.2D/IT1LCRD

I CERTIFY THAT THE PROPERTY LINES SHOWN ON THIS PLAN ARE THE LINES DIVIDING EXISTING OWNERSHIPS, AND THE LINES OF STREETS AND WAYS SHOWN ARE THOSE OF PUBLIC OR PRIVATE STREETS OR WAYS ALREADY ESTABLISHED, AND THAT NO NEW LINES FOR DIVISION OF OWNERSHIP OR FOR NEW WAYS ARE SHOWN; AND THAT THIS PLAN HAS BEEN PREPARED IN CONFORMANCE WITH THE RULES AND REGULATIONS OF THE REGISTERS OF DEEDS OF THE COMMONWEALTH OF MASSACHUSETTS.
Susan E. Sullivan
PROFESSIONAL LAND SURVEYOR
8.23.05
DATE



PL # 1183 8-25-2005 2:16 P.M.

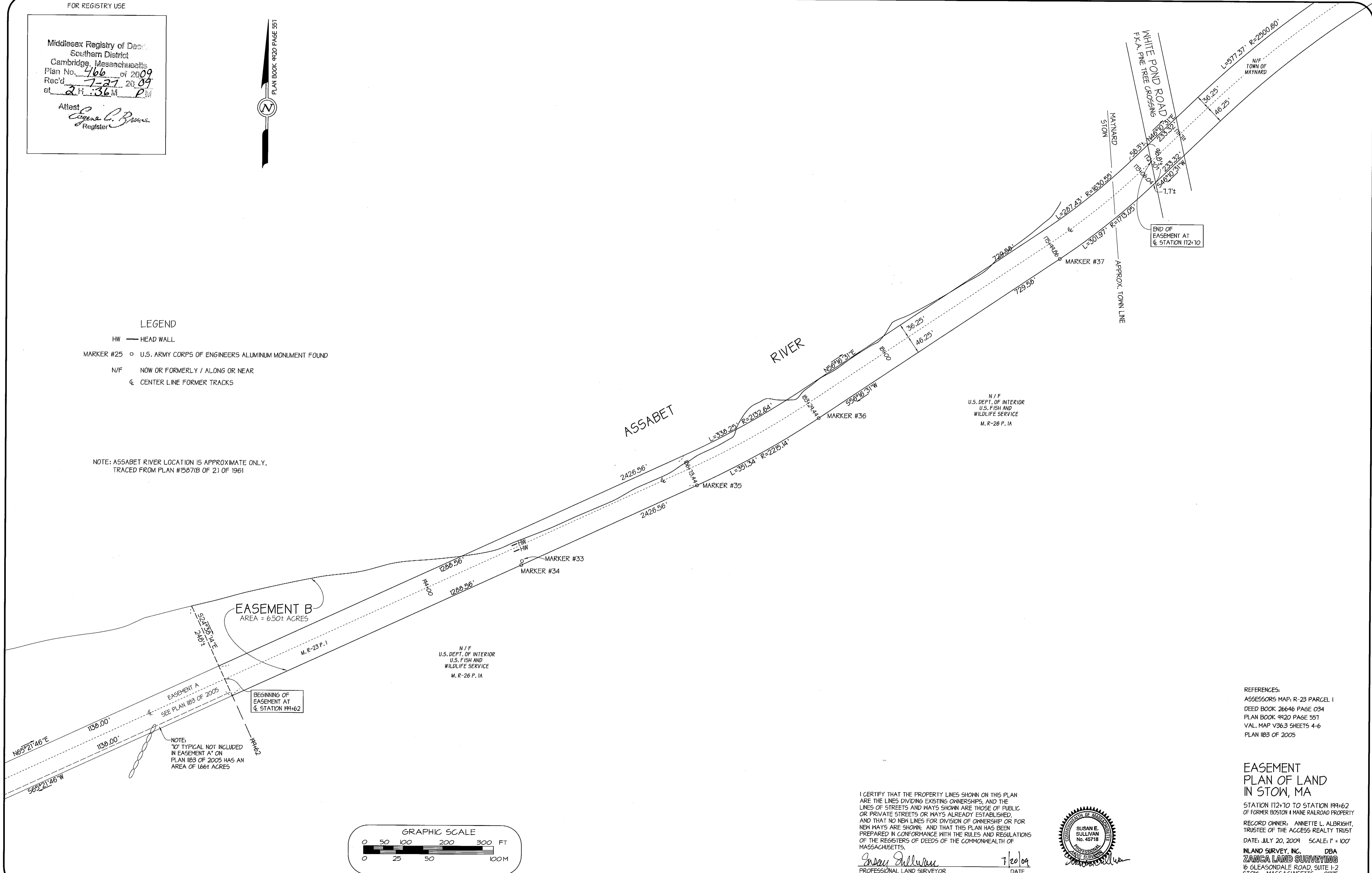
Middlesex Registry of Deeds
 Southern District
 Cambridge, Massachusetts
 Plan No. 466 of 2009
 Rec'd 7-27 2009
 at 2 H. 36 M. P.
 Attest
Regina C. Pinnas
 Register



LEGEND

- HW — HEAD WALL
- MARKER #25 ○ U.S. ARMY CORPS OF ENGINEERS ALUMINUM MONUMENT FOUND
- N/F NOW OR FORMERLY / ALONG OR NEAR
- ⊕ CENTER LINE FORMER TRACKS

NOTE: ASSABET RIVER LOCATION IS APPROXIMATE ONLY,
 TRACED FROM PLAN #1587(B OF 2) OF 1961



EASEMENT B
 AREA = 6.50± ACRES

EASEMENT A
 SEE PLAN 1183 OF 2005

NOTE:
 10' TYPICAL NOT INCLUDED
 IN EASEMENT A ON
 PLAN 1183 OF 2005 HAS AN
 AREA OF 1.66± ACRES

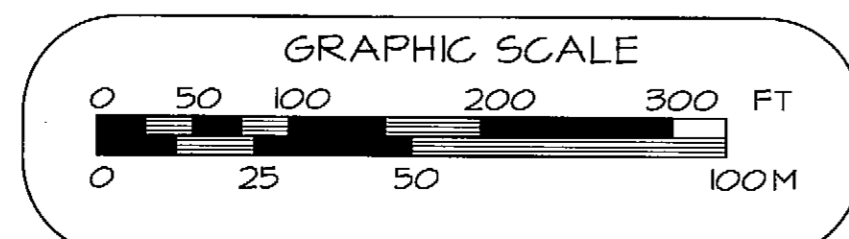
N / F
 U.S. DEPT. OF INTERIOR
 U.S. FISH AND
 WILDLIFE SERVICE
 M. R-26 P. 1A

N / F
 U.S. DEPT. OF INTERIOR
 U.S. FISH AND
 WILDLIFE SERVICE
 M. R-26 P. 1A

REFERENCES:
 ASSESSORS MAP, R-23 PARCEL 1
 DEED BOOK 26646 PAGE 034
 PLAN BOOK 9120 PAGE 557
 VAL. MAP V36.3 SHEETS 4-6
 PLAN 1183 OF 2005

EASEMENT
 PLAN OF LAND
 IN STOW, MA

STATION 112+70 TO STATION 114+62
 OF FORMER BOSTON & MAINE RAILROAD PROPERTY
 RECORD OWNER: ANNETTE L. ALBRIGHT,
 TRUSTEE OF THE ACCESS REALTY TRUST
 DATE: JULY 20, 2009 SCALE: 1" = 100'
 LAND SURVEY, INC. DBA
 ZANCA LAND SURVEYING
 16 GLEASONDALE ROAD, SUITE 1-2
 STOW, MASSACHUSETTS 01175
 (918)461-2355 FAX:(918)461-2351
 111EA53.2D/111LGRD



I CERTIFY THAT THE PROPERTY LINES SHOWN ON THIS PLAN
 ARE THE LINES DIVIDING EXISTING OWNERSHIPS, AND THE
 LINES OF STREETS AND WAYS SHOWN ARE THOSE OF PUBLIC
 OR PRIVATE STREETS OR WAYS ALREADY ESTABLISHED,
 AND THAT NO NEW LINES FOR DIVISION OF OWNERSHIP OR FOR
 NEW WAYS ARE SHOWN, AND THAT THIS PLAN HAS BEEN
 PREPARED IN CONFORMANCE WITH THE RULES AND REGULATIONS
 OF THE REGISTERS OF DEEDS OF THE COMMONWEALTH OF
 MASSACHUSETTS.

Susan E. Sullivan
 PROFESSIONAL LAND SURVEYOR
 DATE 7/20/09



466 OF 2009