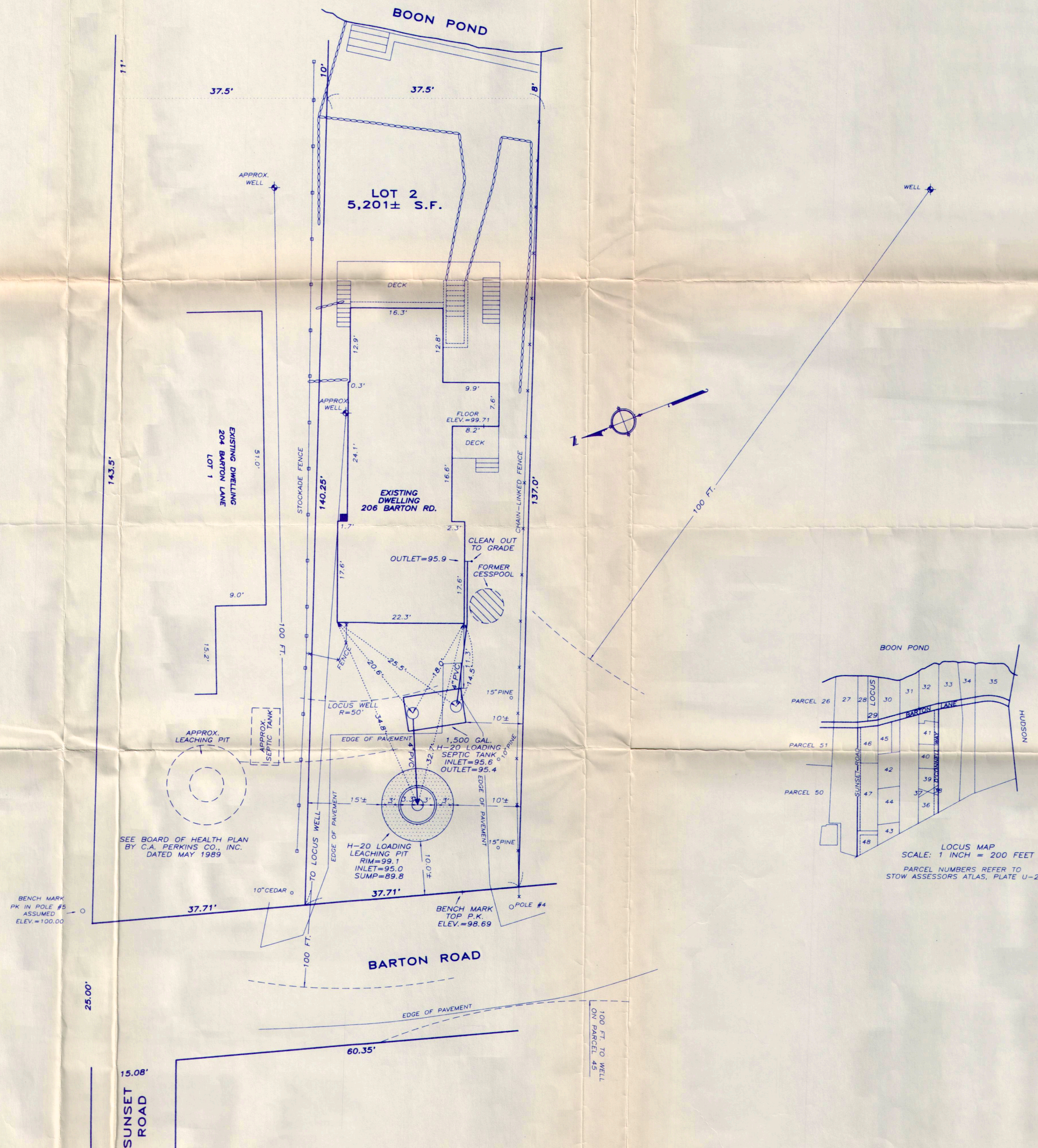
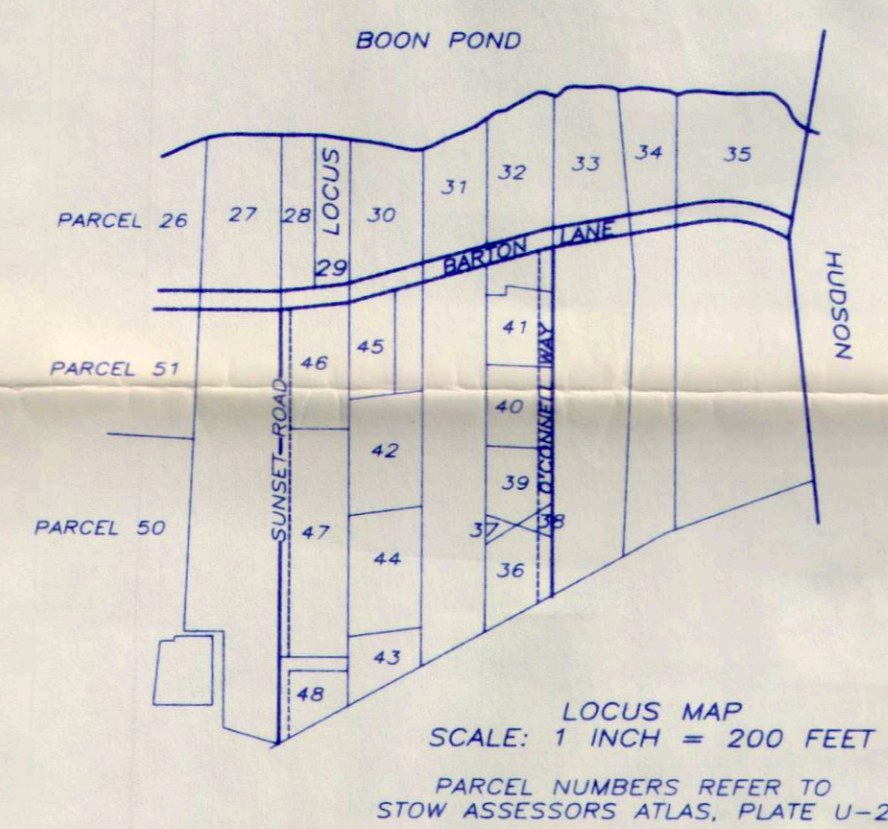


NOTE: FOR PROPERTY LINE DATA SEE PLAN BY C.R. HERRICK, ENGR. & SURV.  
 DATED SEPT. 29, 1930 RECORDED IN BOOK 5508 PAGE END  
 LOCUS SHOWN AS PARCEL 29 ON PLATE U-2 OF THE STOW ASSESSORS ATLAS  
 PROPERTY LINES ARE APPROXIMATE ONLY



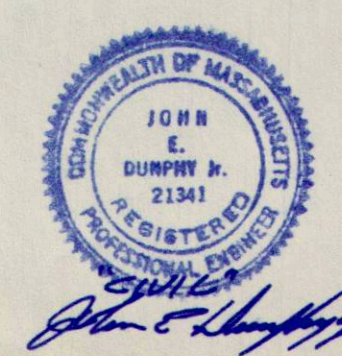
I CERTIFY TO THE BEST OF MY KNOWLEDGE AND PROFESSIONAL ABILITY THAT THE SUBSURFACE DISPOSAL SYSTEM SHOWN ON THIS PLAN WAS INSTALLED IN THE LOCATION AND AT THE ELEVATIONS SHOWN AS OF JULY 2, 1990. WHILE CONSTRUCTION SUPERVISION WAS NOT SUPPLIED, A VISUAL INSPECTION OF THE OBSERVABLE PORTIONS OF THE COMPLETED SYSTEM APPEAR TO BE IN CONFORMITY WITH 'TITLE 5, THE STATE ENVIRONMENTAL CODE'. INSPECTIONS WERE MADE OF THE SYSTEM ON JUNE 20, JUNE 26, AND JULY 2, 1990.

*Acton Survey & Engineering, Inc.*  
 ACTON SURVEY & ENGINEERING, INC.  
*John E. Dunphy, Jr. R.P.E. 21341*



**SUBSURFACE DISPOSAL SYSTEM REPAIR  
 AS BUILT PLAN FOR  
 206 BARTON ROAD  
 STOW - MASS.  
 PREPARED FOR: THE BOARD OF HEALTH**

SCALE: 1 INCH = 10 FEET JULY 2, 1990  
 ACTON SURVEY & ENGINEERING, INC.  
 277 CENTRAL ST. - ACTON - MASS.



RECEIVED  
 JUL 09 1990  
 BOARD OF HEALTH