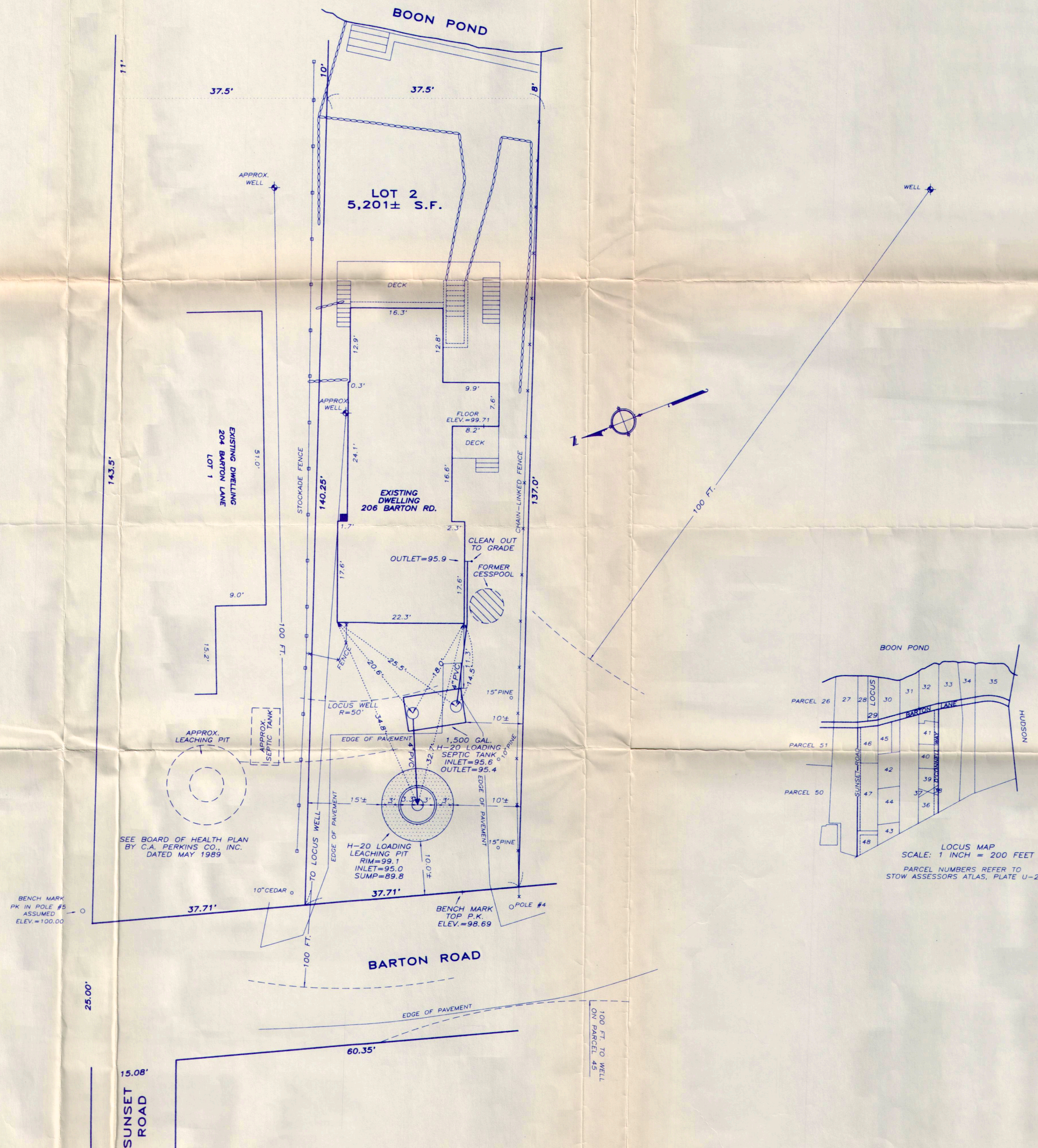
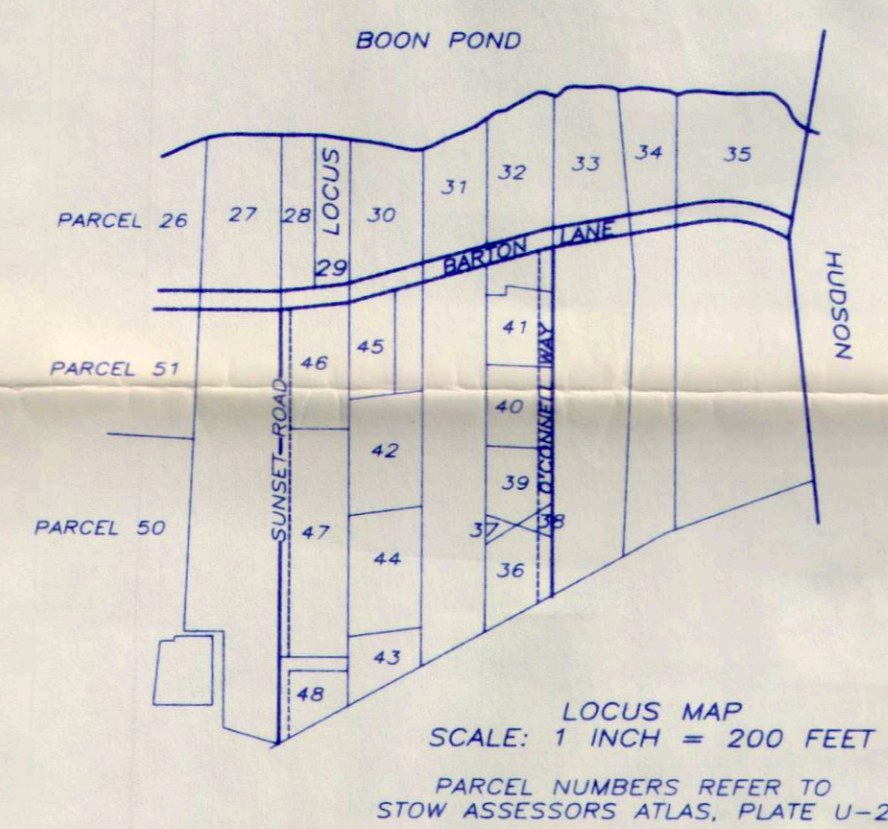


NOTE: FOR PROPERTY LINE DATA SEE PLAN BY C.R. HERRICK, ENGR. & SURV.
 DATED SEPT. 29, 1930 RECORDED IN BOOK 5508 PAGE END
 LOCUS SHOWN AS PARCEL 29 ON PLATE U-2 OF THE STOW ASSESSORS ATLAS
 PROPERTY LINES ARE APPROXIMATE ONLY



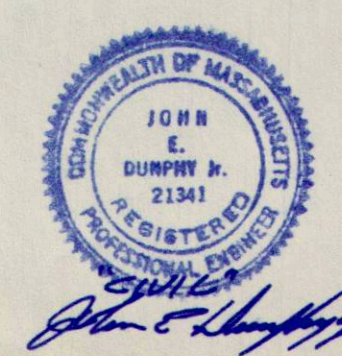
I CERTIFY TO THE BEST OF MY KNOWLEDGE AND PROFESSIONAL ABILITY THAT THE SUBSURFACE DISPOSAL SYSTEM SHOWN ON THIS PLAN WAS INSTALLED IN THE LOCATION AND AT THE ELEVATIONS SHOWN AS OF JULY 2, 1990. WHILE CONSTRUCTION SUPERVISION WAS NOT SUPPLIED, A VISUAL INSPECTION OF THE OBSERVABLE PORTIONS OF THE COMPLETED SYSTEM APPEAR TO BE IN CONFORMITY WITH 'TITLE 5, THE STATE ENVIRONMENTAL CODE'. INSPECTIONS WERE MADE OF THE SYSTEM ON JUNE 20, JUNE 26, AND JULY 2, 1990.

Acton Survey & Engineering, Inc.
 ACTON SURVEY & ENGINEERING, INC.
John E. Dunphy Jr. R.P.E. 21341



**SUBSURFACE DISPOSAL SYSTEM REPAIR
 AS BUILT PLAN FOR
 206 BARTON ROAD
 STOW - MASS.
 PREPARED FOR: THE BOARD OF HEALTH**

SCALE: 1 INCH = 10 FEET JULY 2, 1990
 ACTON SURVEY & ENGINEERING, INC.
 277 CENTRAL ST. - ACTON - MASS.



RECEIVED
 JUL 09 1990
 BOARD OF HEALTH