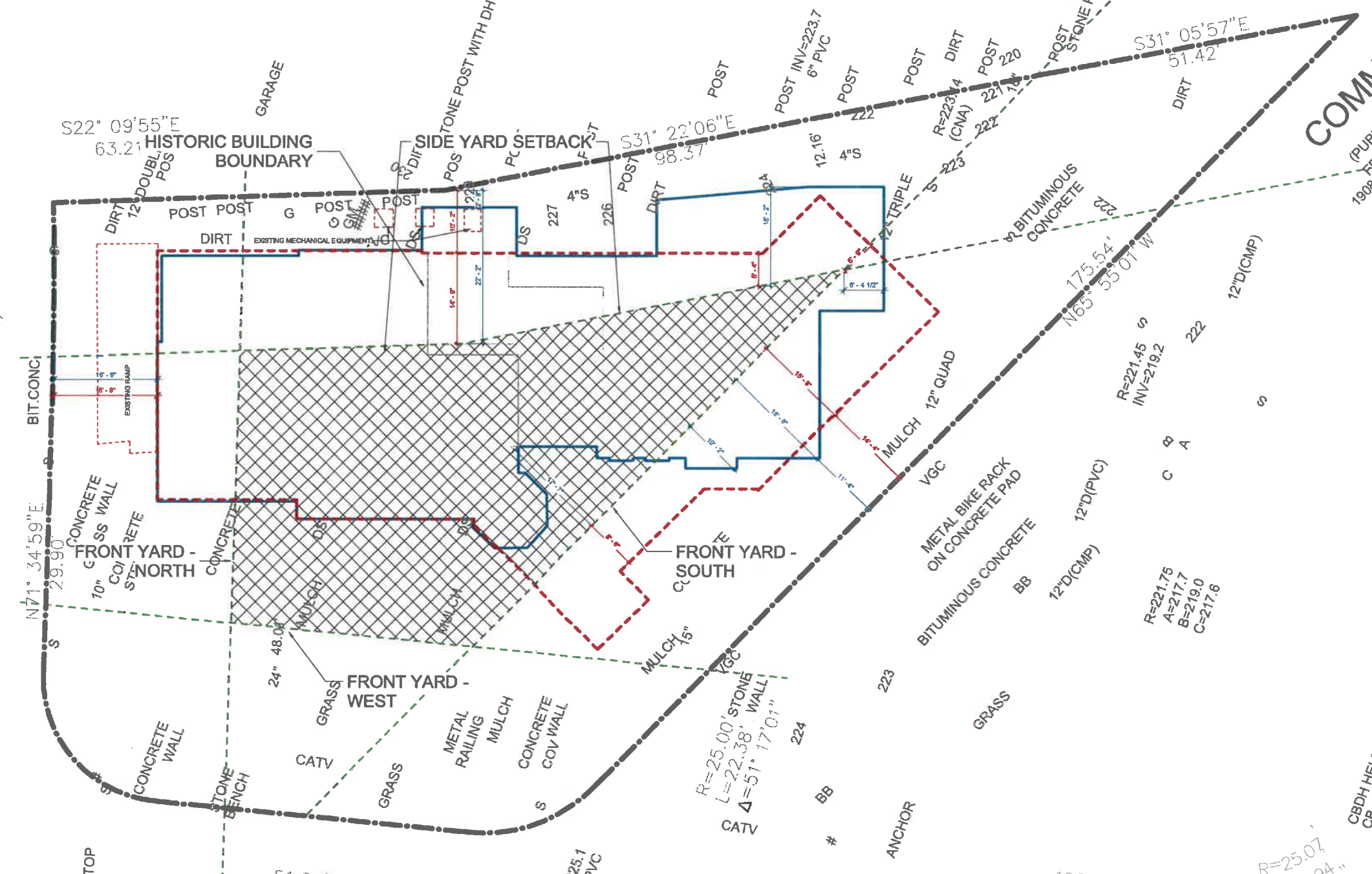


CRESCENT STREET
(PUBLIC - 50' WIDTH - 1958 RELOCATION)

R=232.03
A=228.2
B=227.9
12"D(CMP)

CATV
R=20.00'
L=29.90'
Δ=85° 39' 26"
R=231.70
A=228.0
B=227.9

- EXISTING FOOTPRINT - 5,266 SF
- PROPOSED FOOTPRINT - 4,710 SF
- HISTORIC BUILDING BOUNDARY
- PROPERTY LINE
- EXISTING SET BACKS
- BUILDABLE AREA



COMMON ROAD
(PUBLIC - 35' WIDTH - PER PLAN RECEIVED
FROM TOWN AND 1999 TOWN VOTE TO RECORD
1908 ABANDONMENT OF COMMON ROAD AS A TOWN WAY)

LIBRARY HILL ROAD
(PUBLIC - 50' WIDTH - 1964 RELOCATION)

R=25.07
L=26.94'
Δ=61° 34' 10"

123.43'
N 4° 38' 01" W

BB
224
225
226
227
228
229
230
231
232

CBDH HELD
CB



CRES CENT ST

Parking



Parking



COMMON RD

Raised Walkway

LIBRARY HILL RD