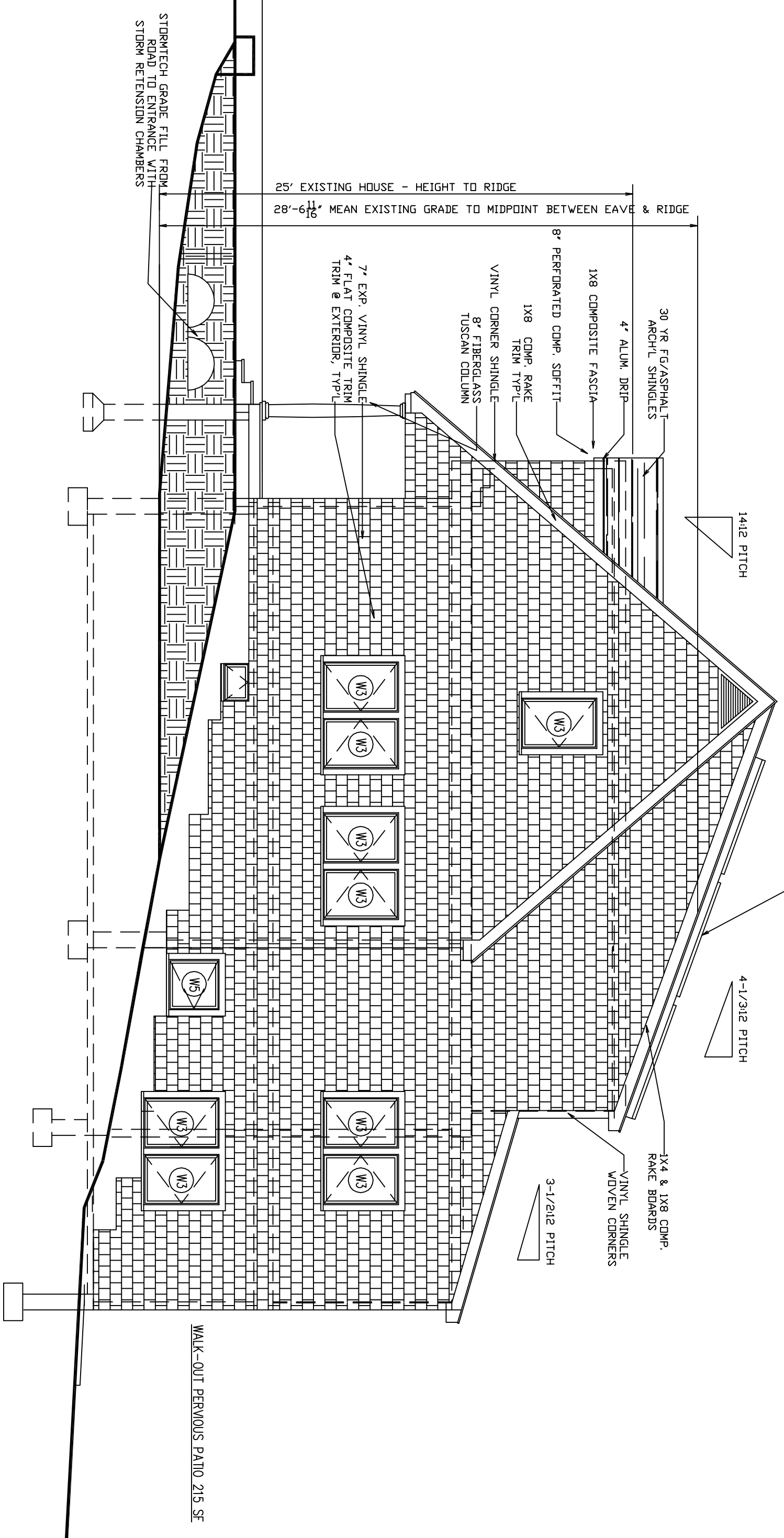
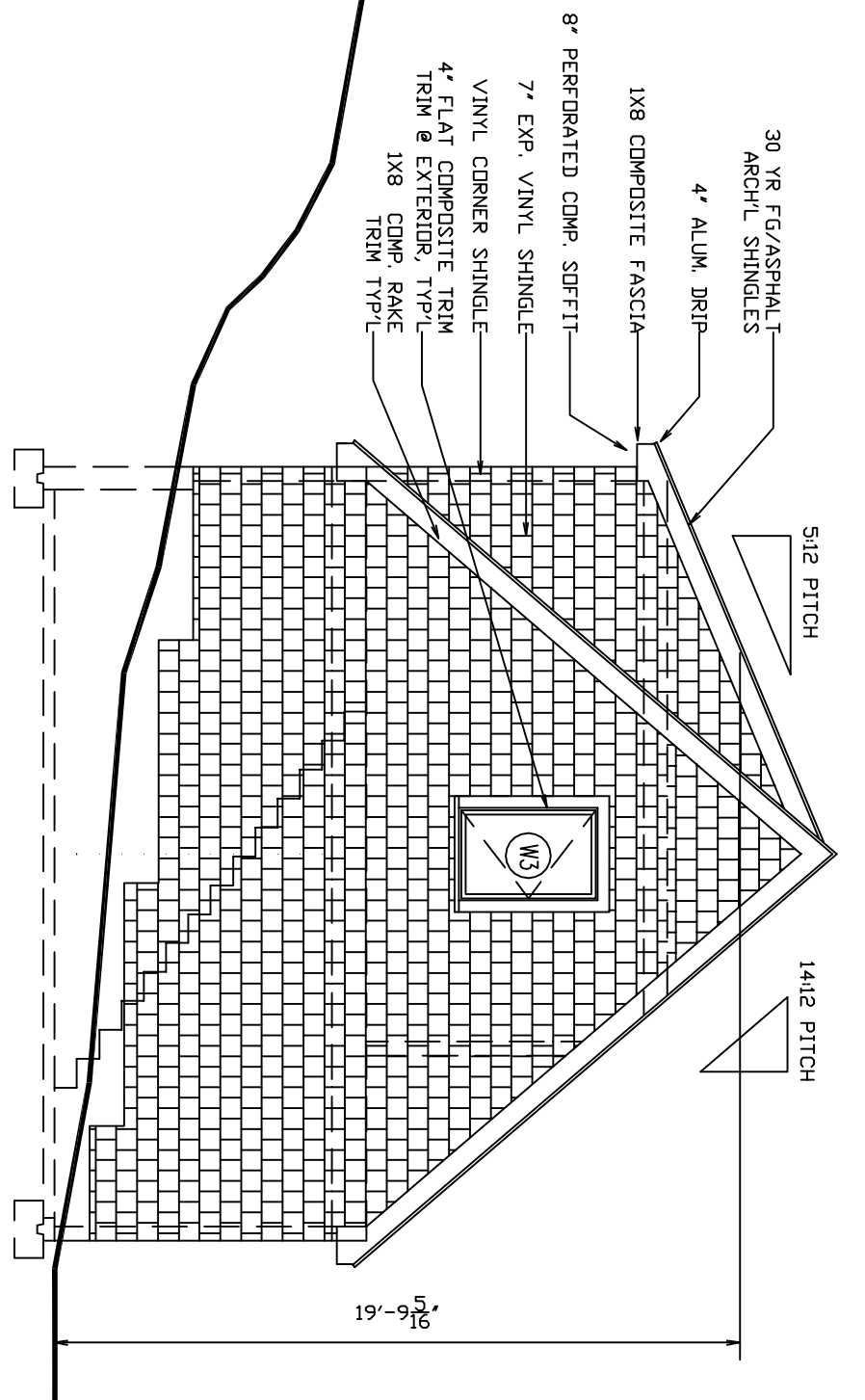
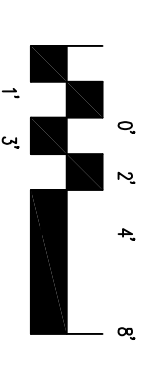
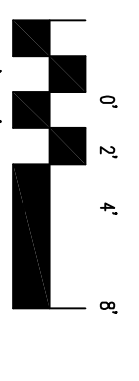


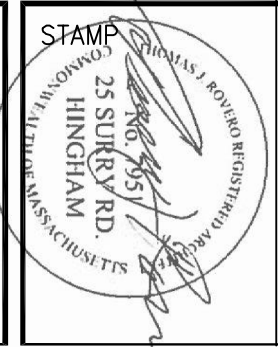
EXISTING NW ELEVATION  
3/16" = 1'-0"



PROPOSED NW ELEVATION  
3/16" = 1'-0"



REVISIONS		
No.	Description	Date
1	ZBA SITE VISIT	12/29/20



Thomas Rovero, AIA  
1 Morse Pond Road  
Wellesley, MA 02181  
Tel. 617-237-7883

PROJECT TITLE  
74 PINE POINT ROAD  
ALTERATIONS  
74 PINE POINT ROAD  
STOW, MA

DATE 2/2/19  
DRAWN BY TR  
CHECKED BY EG  
PROJECT NUMBER  
COMP. DWG. NAME 74PINEPOINT.DWG  
SCALE NTS

TITLE  
EXISTING & PROPOSED  
HOUSE & GARAGE  
BUILDING HEIGHT

ZB2  
© COPYRIGHT