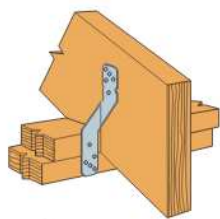
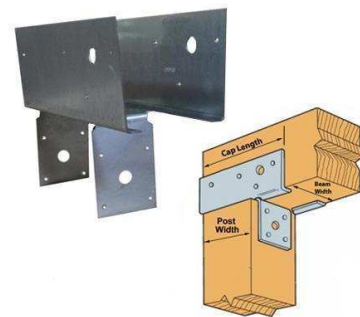


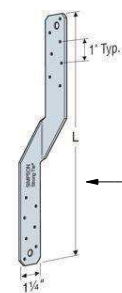
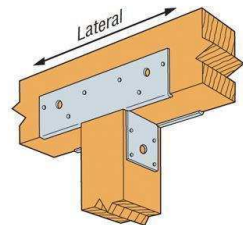
(2) SIMPSON STRONG TIE DTT2Z DECK CONNECTORS
 (1) AT INTERIOR SIDE OF EACH END JOIST



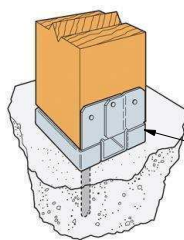
H8 Attaching Rafter to Double Top Plates



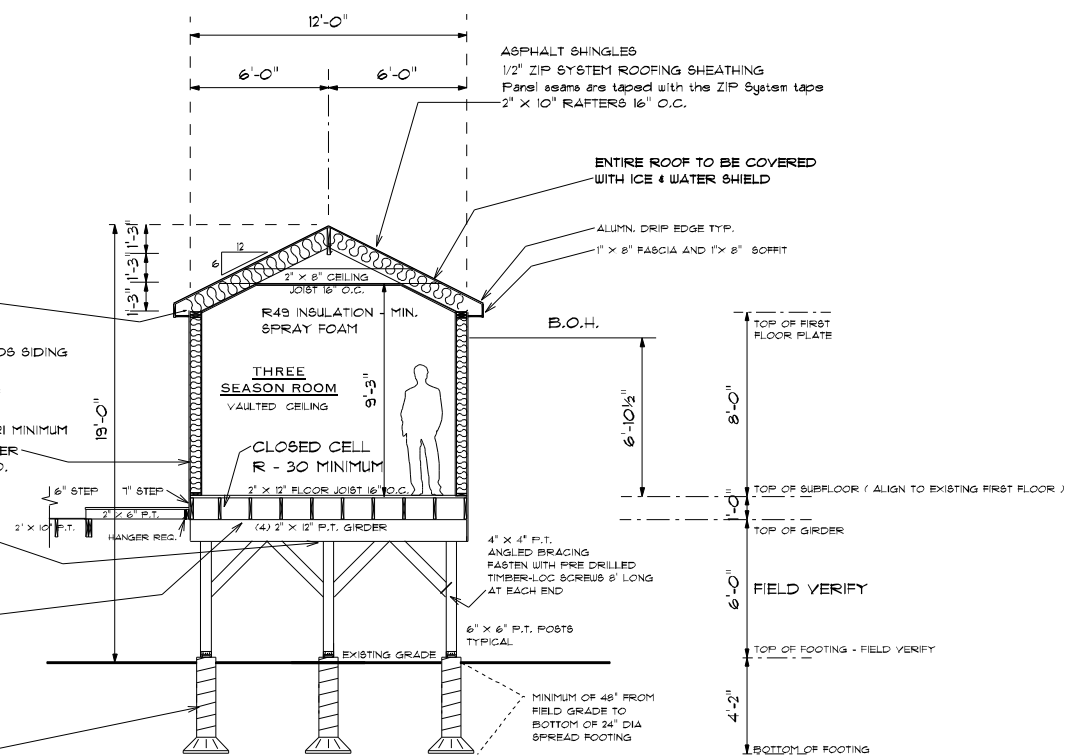
SIMPSON STRONG-TIE PC66 GALVANIZED POST CAPS TO JOIN POST TO BEAM ABOVE TYPICAL



SIMPSON STRONG-TIE LTS12 GALVANIZED TWIST STRAP TIES TOP OF BEAM TO BOTTOM OF EACH FLOOR JOIST ABOVE



10" FORMTUBE WITH 6" x 6" P.T. POST FASTENED WITH 1/2" ANCHORAGE AND SIMPSON GALVANIZED ABA66Z POST BASE SUPPORTING GIRDER ABOVE TYPICAL ALL LOCATIONS



THREE SEASON ROOM CROSS SECTION

<p>498 GREAT ROAD ACTON, MA 01720 978.337.9378</p>	<p>COPYRIGHT ©2020</p> <p>OWNER/ BUILDER STONEBRAKER ADDITION</p>
	<p>SITE: 181 Randal Road Stow, MA.</p>
	<p>SCALE: 1/4" = 1'-0"</p>
	<p>DATE: May 12, 2020</p>
	<p>DRAWN BY: DM2020-3-5</p>
<p>THREE SEASON ROOM CROSS SECTION</p>	