

5/4/2023 3:50 PM  
p:\10000-14999\14631.1\_topo.dwg  
p:\10000-14999\14631.1\_topo.dwg

# Randall Library Renovation + Addition ZBA Application Materials Attachment 2 - Existing Parking Diagram 6/14/23

## UTILITY INFORMATION STATEMENT

1. THE SUB-SURFACE UTILITY INFORMATION SHOWN HEREON IS COMPILED BASED ON FIELD SURVEY INFORMATION, RECORD INFORMATION AS SUPPLIED BY THE APPROPRIATE UTILITY COMPANIES, AND PLAN INFORMATION SUPPLIED BY THE CLIENT, IF ANY; THEREFORE WE CANNOT GUARANTEE THE ACCURACY OF SAID COMPILED SUB-SURFACE INFORMATION TO ANY CERTAIN DEGREE OF STATED TOLERANCE. ONLY PHYSICALLY LOCATED SUB-SURFACE UTILITY FEATURES FALL WITHIN NORMAL STANDARD OF CARE ACCURACIES.
2. THE LOCATIONS OF UNDERGROUND PIPES, CONDUITS, AND STRUCTURES HAVE BEEN DETERMINED FROM SAID INFORMATION, AND ARE APPROXIMATE ONLY. COMPILED LOCATIONS OF ANY UNDERGROUND STRUCTURES, NOT VISIBLY OBSERVED AND LOCATED, CAN VARY FROM THEIR ACTUAL LOCATIONS.
3. ADDITIONAL BURIED UTILITIES/STRUCTURES MAY BE ENCOUNTERED.
4. THE STATUS OF UTILITIES, WHETHER ACTIVE, ABANDONED, OR REMOVED, IS AN UNKNOWN CONDITION AS FAR AS OUR COMPILATION OF THIS INFORMATION.
5. IT IS INCUMBENT UPON INDIVIDUALS USING THIS INFORMATION TO UNDERSTAND THAT COMPILING UTILITY INFORMATION IS NOT EXACT, AND IS SUBJECT TO CHANGE BASED UPON VARYING PLAN INFORMATION RECEIVED AND ACTUAL LOCATIONS.
6. THE ACCURACY OF MEASURED UTILITY INVERTS AND PIPE SIZES IS SUBJECT TO FIELD CONDITIONS, THE ABILITY TO MAKE VISUAL OBSERVATIONS, DIRECT ACCESS TO THE VARIOUS ELEMENTS AND OTHER MATTERS.
7. THE PROPER UTILITY ENGINEERING/COMPANY SHOULD BE CONSULTED AND THE ACTUAL LOCATIONS OF SUBSURFACE STRUCTURES SHOULD BE VERIFIED IN THE FIELD (V.I.F.) BEFORE PLANNING FUTURE CONNECTIONS. CONTACT THE DIG SAFE CALL CENTER AT 1-888-344-7233, SEVENTY-TWO HOURS PRIOR TO EXCAVATION, BLASTING, GRADING, AND/OR PAVING.
8. AS OF THE DATE OF THIS PLAN RECORD INFORMATION HAS NOT BEEN RECEIVED BY NITSCH ENGINEERING FOR THE FOLLOWING UTILITIES: MCI-VERIZON BUSINESS AND HUDSON LIGHT & POWER DEPT.

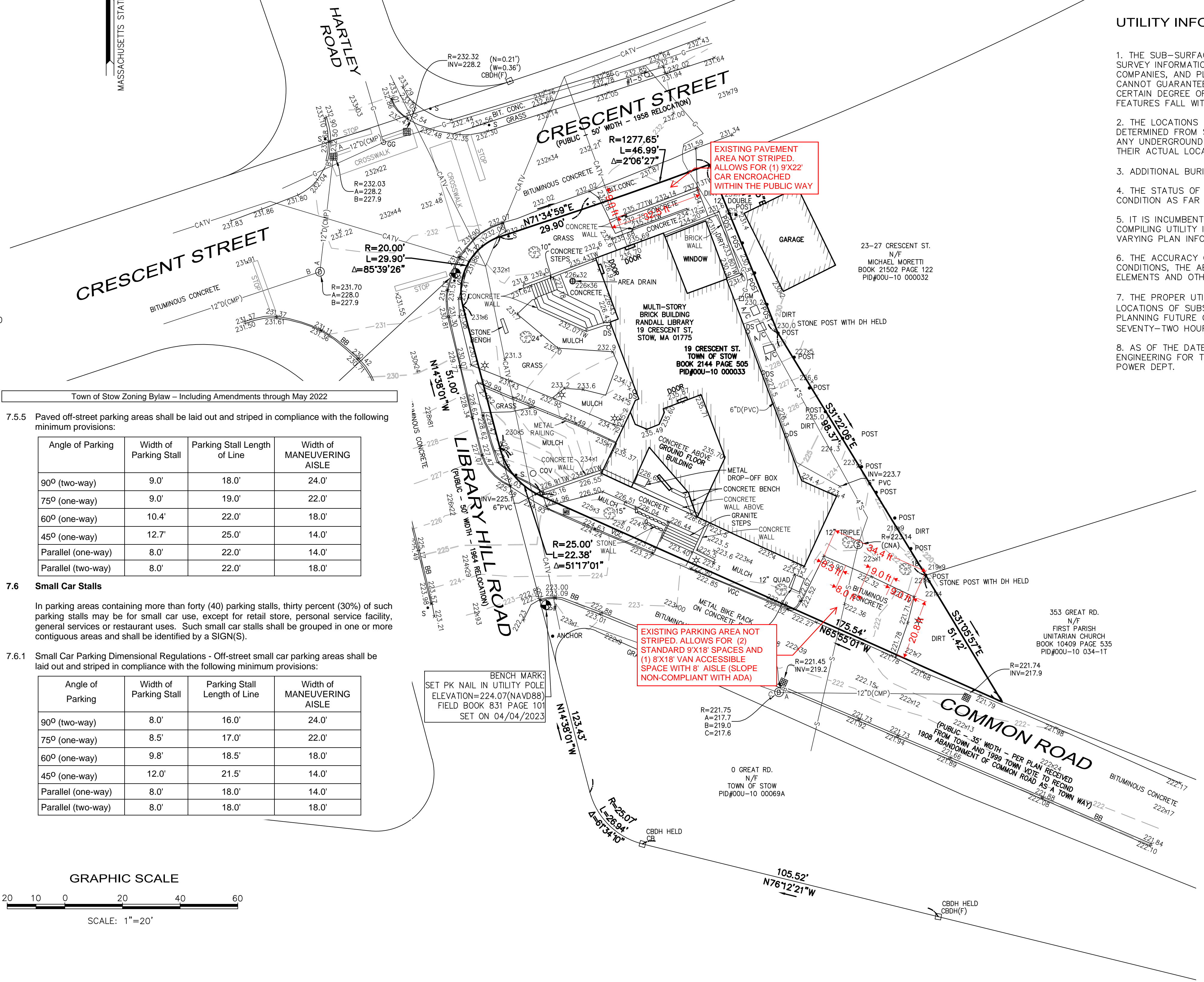
## NOTES

1. THIS DOCUMENT IS AN INSTRUMENT OF SERVICE OF NITSCH ENGINEERING. IT IS ISSUED TO DESIGNLAB ARCHITECTS FOR PURPOSES RELATED DIRECTLY AND SOLELY TO NITSCH ENGINEERING'S SCOPE OF SERVICES UNDER CONTRACT WITH DESIGNLAB ARCHITECTS FOR RANDALL LIBRARY. ANY USE OR REUSE OF THIS DOCUMENT FOR ANY REASON BY ANY PARTY FOR PURPOSES UNRELATED DIRECTLY AND SOLELY TO SAID CONTRACT AND PROJECT SHALL BE AT THE USER'S SOLE AND EXCLUSIVE RISK AND LIABILITY, INCLUDING LIABILITY FOR VIOLATION OF COPYRIGHT LAWS, UNLESS WRITTEN AUTHORIZATION IS GIVEN THEREFOR BY NITSCH ENGINEERING.
2. THE PURPOSE OF THIS PLAN IS TO SHOW EXISTING CONDITIONS AS THE RESULT OF AN ON-THE-GROUND INSTRUMENT SURVEY WHICH OCCURRED APRIL 2023.
3. HORIZONTAL COORDINATES REFER TO MASSACHUSETTS STATE PLANE (NAD 83) BASED ON RTK GPS OBSERVATIONS.
4. ELEVATION REFERS TO NORTH AMERICAN VERTICAL DATUM OF 1988 (NAVD 88) BASED ON RTK GPS OBSERVATIONS.
5. THE INFORMATION CONTAINED ON THE DISK OR ELECTRONIC DRAWING FILE ACCOMPANYING THIS PLAN MUST BE COMPARED TO THE SEALED AND SIGNED HARD COPY OF THE PLAN TO ENSURE THE ACCURACY OF ALL INFORMATION AND TO ENSURE NO CHANGES, ALTERATIONS, OR MODIFICATIONS HAVE BEEN MADE. RELIANCE SHALL NOT BE MADE ON A DOCUMENT TRANSMITTED BY COMPUTER OR OTHER ELECTRONIC MEANS UNLESS FIRST COMPARED TO THE ORIGINAL SEALED DOCUMENT ISSUED AT THE TIME OF THE SURVEY. DUE TO THE CRITICAL NATURE OF SURVEYING, DATA ACQUISITION, AND AUTOCAD PLAN DEVELOPMENT, IF CRITICAL DIMENSIONAL INFORMATION IS NEEDED AND IS NOT SPECIFICALLY SHOWN ON THE ELECTRONIC DRAWING FILE, PLEASE CONTACT NITSCH ENGINEERING.

## LEGEND

- ⊙ CATCH BASIN
- ⊙ CABLE TELEVISION MANHOLE
- ⊙ DRAIN MANHOLE
- ⊙ ELECTRIC MANHOLE
- ⊙ MISCELLANEOUS MANHOLE
- ⊙ SEWER MANHOLE
- ⊙ TELEPHONE MANHOLE
- ⊙ WATER MANHOLE
- ⊙ GAS SHUT-OFF
- ⊙ WATER SHUT-OFF
- ⊙ GAS GATE
- ⊙ WATER GATE
- ⊙ IRRIGATION CONTROL VALVE
- ⊙ CLEANOUT
- ⊙ CLEANOUT
- ⊙ BOSTON WATER WORKS
- ⊙ FIRE HYDRANT
- ⊙ DOWN SPOUT
- ⊙ UTILITY POLE
- ⊙ UTILITY POLE WITH CONDUIT LINE TO GROUND
- ⊙ LIGHT POLE
- ⊙ LIGHT BOLLARD
- ⊙ LANDSCAPE LIGHT
- ⊙ HAND HOLE
- ⊙ TRASH CAN
- ⊙ FIRE ALARM CALL BOX
- ⊙ METAL POST
- ⊙ CONCRETE POST
- ⊙ PARKING METER
- ⊙ SIGN POST
- ⊙ TRAFFIC MAST ARM
- ⊙ TRAFFIC SIGNAL
- ⊙ PEDESTRIAN SIGNAL
- ⊙ DECIDUOUS TREE WITH TRUNK DIAMETER
- ⊙ CONIFEROUS TREE WITH TRUNK DIAMETER
- ⊙ HANDICAP PARKING
- ⊙ SPOT ELEVATION
- ⊙ CHAIN LINK FENCE
- ⊙ BITUMINOUS CONCRETE BERM
- ⊙ SLOPED GRANITE CURB
- ⊙ VERTICAL GRANITE CURB
- ⊙ VERTICAL CONCRETE CURB
- ⊙ WHEELCHAIR RAMP
- ⊙ LANDSCAPE TIMBER
- ⊙ RIM ELEVATION EQUALS
- ⊙ INVERT ELEVATION EQUALS
- ⊙ TOP OF HOOD ELEVATION EQUALS
- ⊙ NO PIPES VISIBLE
- ⊙ TOP OF WATER
- ⊙ CANNOT ACCESS
- ⊙ TRAFFIC CONTROL BOX
- ⊙ UNDERGROUND LOOP DETECTOR
- ⊙ DETECTABLE WARNING PANEL
- ⊙ TOP OF WALL ELEVATION
- ⊙ UNDERGROUND CABLE TELEVISION LINE
- ⊙ UNDERGROUND DRAIN LINE
- ⊙ UNDERGROUND ELECTRIC LINE
- ⊙ UNDERGROUND GAS LINE
- ⊙ UNDERGROUND SEWER LINE
- ⊙ UNDERGROUND TELEPHONE LINE
- ⊙ UNDERGROUND WATER LINE
- ⊙ OVERHEAD WIRES
- ⊙ MONITORING WELL
- ⊙ BENCH MARK

MASSACHUSETTS STATE PLANE COORDINATE SYSTEM  
NAD 83



Town of Stow Zoning Bylaw - Including Amendments through May 2022

7.5.5 Paved off-street parking areas shall be laid out and striped in compliance with the following minimum provisions:

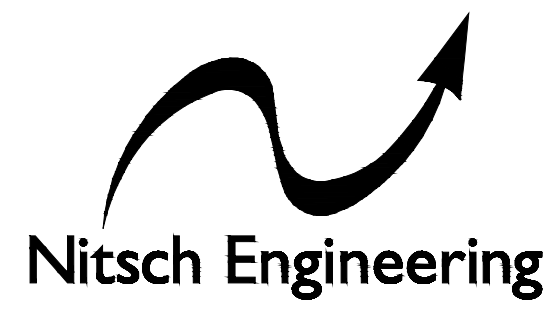
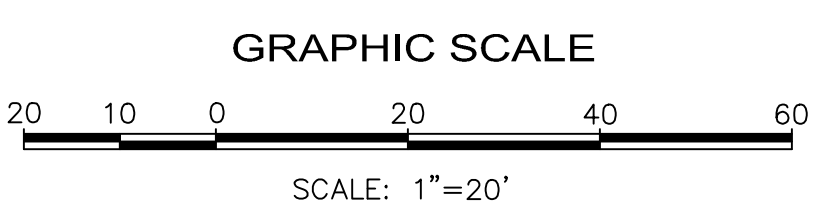
Angle of Parking	Width of Parking Stall	Parking Stall Length of Line	Width of MANEUVERING AISLE
90° (two-way)	9.0'	18.0'	24.0'
75° (one-way)	9.0'	19.0'	22.0'
60° (one-way)	10.4'	22.0'	18.0'
45° (one-way)	12.7'	25.0'	14.0'
Parallel (one-way)	8.0'	22.0'	14.0'
Parallel (two-way)	8.0'	22.0'	18.0'

### 7.6 Small Car Stalls

In parking areas containing more than forty (40) parking stalls, thirty percent (30%) of such parking stalls may be for small car use, except for retail store, personal service facility, general services or restaurant uses. Such small car stalls shall be grouped in one or more contiguous areas and shall be identified by a SIGN(S).

7.6.1 Small Car Parking Dimensional Regulations - Off-street small car parking areas shall be laid out and striped in compliance with the following minimum provisions:

Angle of Parking	Width of Parking Stall	Parking Stall Length of Line	Width of MANEUVERING AISLE
90° (two-way)	8.0'	16.0'	24.0'
75° (one-way)	8.5'	17.0'	22.0'
60° (one-way)	9.8'	18.5'	18.0'
45° (one-way)	12.0'	21.5'	14.0'
Parallel (one-way)	8.0'	18.0'	14.0'
Parallel (two-way)	8.0'	18.0'	18.0'



**www.nitscheng.com**  
 2 Center Plaza, Suite 430  
 Boston, MA 02108  
 T: (617) 338-0063  
 F: (617) 338-6472

- ▶ Civil Engineering
- ▶ Land Surveying
- ▶ Transportation Engineering
- ▶ Structural Engineering
- ▶ Green Infrastructure
- ▶ Planning
- ▶ GIS

PROJECT # 14631.1  
 FILE: 14631.1\_TOPO.dwg  
 SCALE: 1"=20'  
 DATE: APRIL 2023  
 PROJECT MANAGER: DRS  
 FIELD BOOK: 831  
 DRAFTED BY: JTJ  
 CHECKED BY:

REV.	COMMENTS	DATE

EXISTING PARKING DIAGRAM  
 RANDALL LIBRARY  
 19 CRESCENT ST, STOW, MA 01775  
 PREPARED FOR:  
**DESIGNLAB ARCHITECTS**  
 35 CHANNEL CENTER STREET, SUITE 103, BOSTON, MA 02210

SHEET: 1  
**EP-1**  
 OF 1 REV.