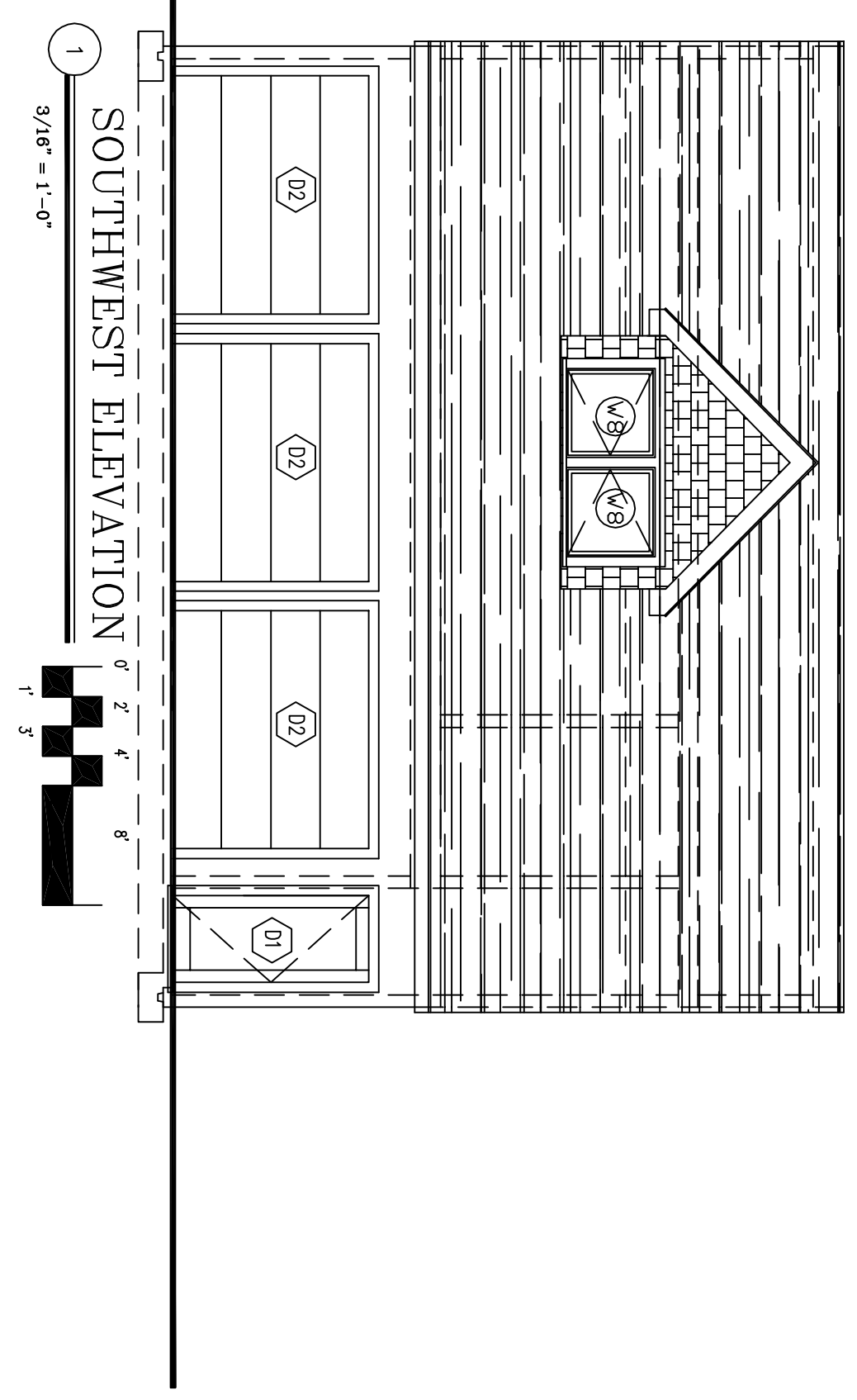
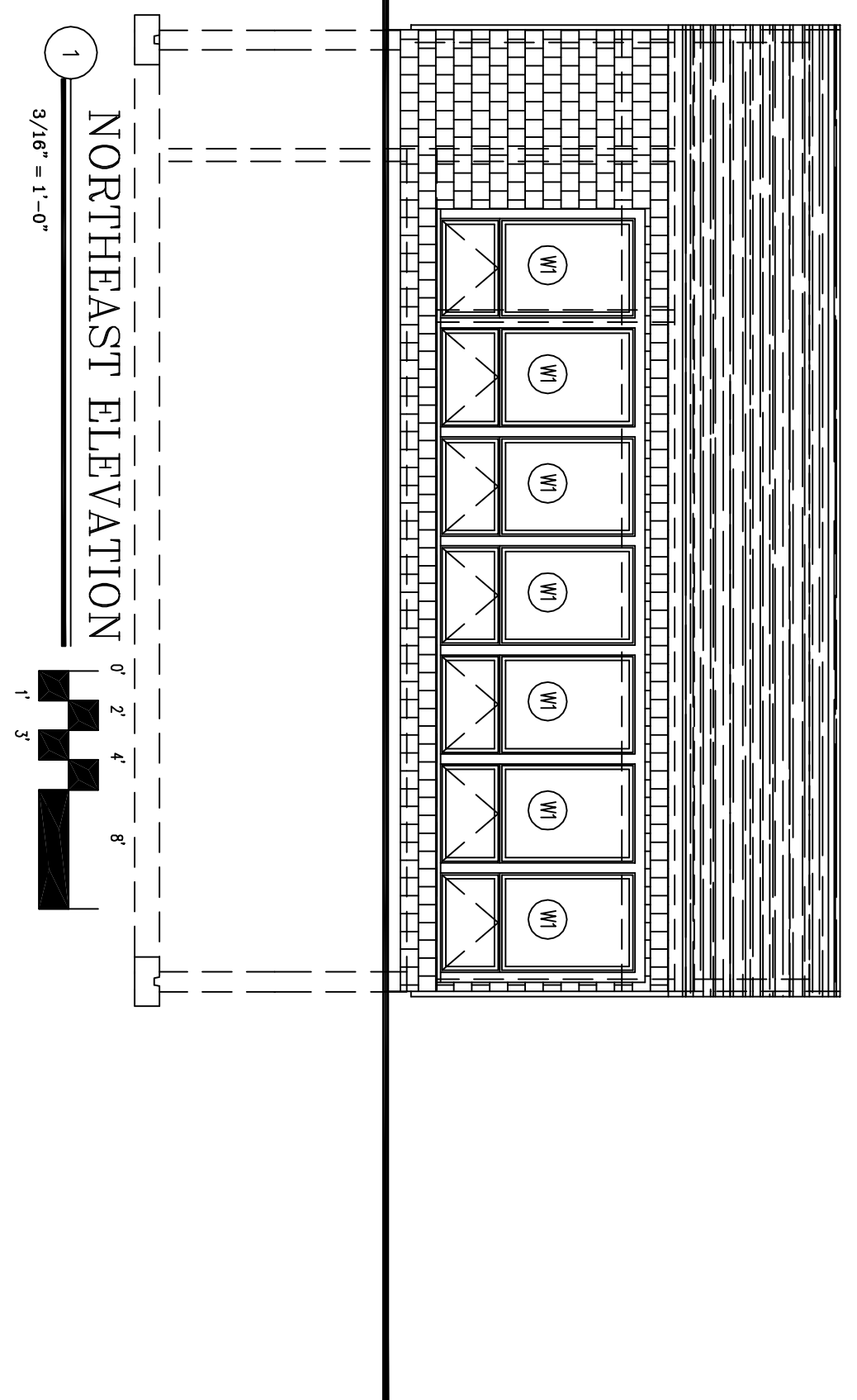


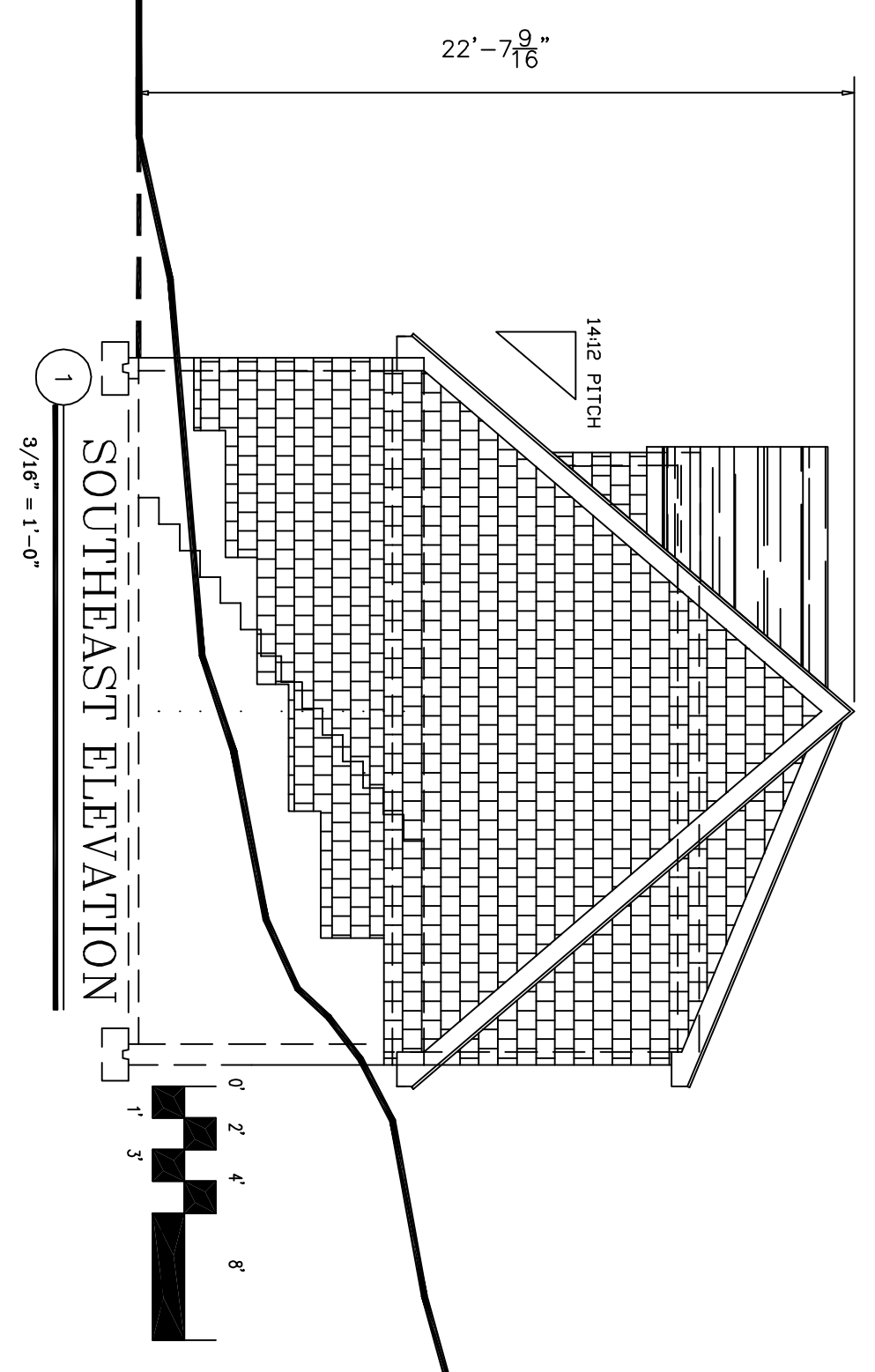
1
3/16" = 1'-0"
8'-0"
1' 3'



1
3/16" = 1'-0"
8'
1' 3'



1
3/16" = 1'-0"
8'
1' 3'



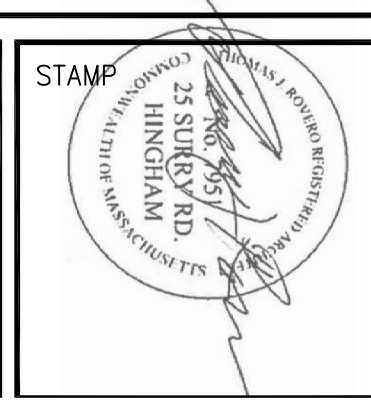
1
3/16" = 1'-0"
8'
1' 3'

TITLE
PROPOSED EXTERIOR
ELEVATIONS

DATE 3/25/10
DRAWN BY TR
CHECKED BY MG
PROJECT NUMBER
COMP. DWG. NAME 16 CHAMBERLAIN
SCALE 3/16" = 1'-0"

PROJECT TITLE
74 PINE POINT ROAD
ALTERATIONS & ADDITION
74 PINE POINT ROAD
STOW, MA 01775

Thomas Rovero, AIA
1 Morses Pond Road
Wellesley, MA 02181
Tel. 617-237-7883



REVISIONS		
No.	Description	Date
1	CUT 5 FT	1/24/21

ZB5
COPYRIGHT