

RANDALL LIBRARY PRELIMINARY DESIGN SUMMARY

TOWN MEETING - 4/12/2023

DESIGN DEVELOPMENT WORKSHOP 3

STOW, MA



designLAB architects



G2 COLLABORATIVE
LANDSCAPE ARCHITECTURE

RANDALL LIBRARY PRELIMINARY DESIGN SUMMARY

TOWN MEETING - 4/12/2023

SCHEMATIC DESIGN WORKSHOP 3

STOW, MA

designLAB Team:

Ben Youtz, Partner

Andrew Brookes, Architect

Audrey Scanlon, Designer

Consultants:

G2 Collaborative

Fitzmeyer + Tocci Associates

RGE Structural Engineers

Nitsch Engineers



designLAB architects



G2 COLLABORATIVE
LANDSCAPE ARCHITECTURE

Today's Agenda

The background of the slide is a photograph of the Randall Library, a historic brick building with a prominent arched entrance and a small tower on the right. The image is overlaid with a semi-transparent blue filter. The text is white, providing high contrast against the blue background.

Introductions (10 min)

- Review Work Plan + Process Updates

Exterior Committee (45 min)

- Field Trip Feedback
- Review Goals + Guiding Principles
- Review Existing Building Analysis + Massing Options
- Review Material Palette Options

Landscape (15 min)

- Review Updated Plan
- Cistern Locations
- SD Estimate Review

Building Committee (60 min)

- Review Updated Building Program
- Review Updated Plan Options

Discussion + Next Steps (15 min)

**Staff Interviews / Tours** (Week of 1/30 or 2/6)

- Library Director + Staff
 - designLAB architects
- Goals:
- Review C+ Discuss Concept Design Plans with Staff

WS1 (Wed 2/15 7PM)

- Attendees:
 - Building Committee
 - Exterior Committee
 - Colliers (OPM)
 - designLAB architects
- Goals:
 - Review Staff Concept Design Feedback
 - Review Preliminary Building Program
 - Share 3D Building Scan
 - Review Exterior Design Precedents + Establish Exterior Design Guiding Principles

WS2 (Wed, 3/9 7PM)

- Attendees:
- Building Committee
 - Exterior Committee

- Colliers (OPM)
- designLAB architects
- G2 Collaborative

Goals:

- Review + Discuss Updated Building + Landscape Plans
- Review + Discuss Exterior Building Character
- Review Preliminary Program Document

WS3 (Wed. 4/13 7PM)

- Attendees:
- Building Committee
 - Exterior Committee
 - Colliers (OPM)
 - designLAB architects

Goals:

- Review SD Drawing Package + Estimate
- Review Refined Building Program

Town Department Meetings (Week of 4/17 + 4/24)

- Attendees:
- Fire Department, Building Department, Public Works, etc.
 - Colliers (OPM)
 - designLAB architects
 - G2 Collaborative
 - Engineering Team (Civil, MEPFP)

Goals:

- Review SD Drawing Package
- Review Building System + Infrastructure Goals

WS4 (Wed.5/3, 7PM)

- Attendees:
- Building Committee
 - Exterior Committee
 - Colliers (OPM)
 - designLAB architects
 - G2 Collaborative
 - F&T (MEFPF)

Goals:

- Review Summary of Town Department Meetings
- Review Updated Building Plans
- Review Preliminary Exterior Character Drawings
- Review Updated Landscape Drawings
- Review Refined Building Program

WSE (Wed 5/24 7PM)

- Attendees:**
- Building Committee
 - Exterior Committee
 - Colliers (OPM)
 - designLAB architects

Goals

- Review Updated Building Plans + Preliminary Exterior Character Drawings

WS5 (Wed. 6/28 7PM)

Attendees:

- Building Committee
- Exterior Committee
- Colliers (OPM)
- designLAB architects

Goals:

- Review DD Drawing Package + Estimate

Town Department Meetings (Week of 7/3 + 7/10)

- Attendees:
- Fire Department, Building Department, Public Works, etc.
 - Colliers (OPM)
 - designLAB architects
 - G2 Collaborative
 - Engineering Team (Civil, MEPFP)

Goals:

- Review DD Drawing Package
- Review Building System + Infrastructure Goals

WS6 (Wed.7/26 7PM)

Attendees:

- Building Committee
- Exterior Committee
- Colliers (OPM)
- designLAB architects
- G2 Collaborative

Goals:

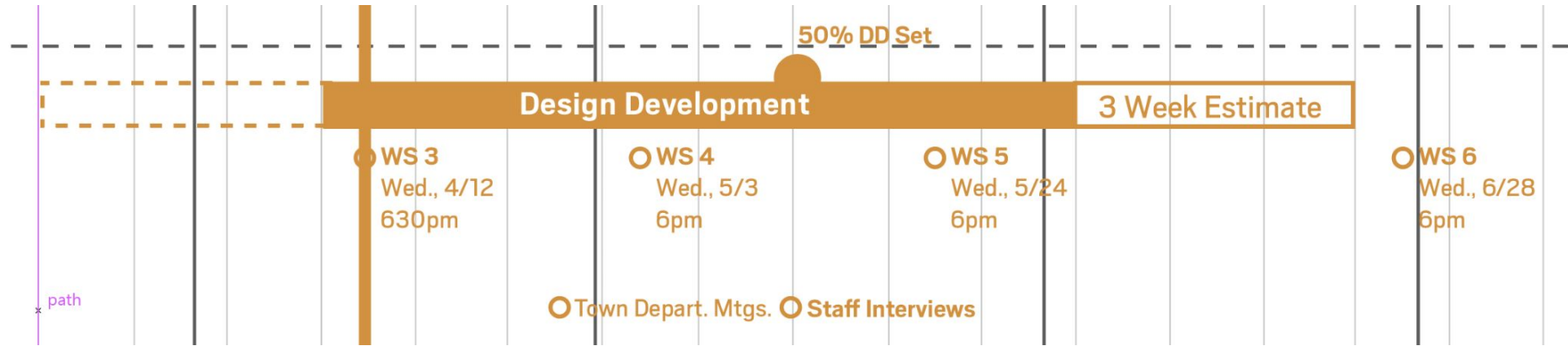
- Review Summary of Town Department Meetings
- Review Updated Building Plans
- Review Preliminary Exterior Character Drawings
- Review Updated Landscape Drawings
- Review Refined Building Program

WS7 (Wed. 9/6, 7PM)

- Attendees:
- Building Committee
 - Exterior Committee
 - Colliers (OPM)
 - design AB architects

Goals:

- Review 50% CD Estimate
- Review Final Design Materials



Today's Agenda

Introductions (10 min)

- Review Work Plan + Process Updates

Exterior Committee (45 min)

- Field Trip Feedback
- Review Goals + Guiding Principles
- Review Existing Building Analysis + Massing Options
- Review Material Palette Options

Landscape (15 min)

- Review Updated Plan
- Cistern Locations
- SD Estimate Review

Building Committee (60 min)

- Review Updated Building Program
- Review Updated Plan Options

Discussion + Next Steps (15 min)

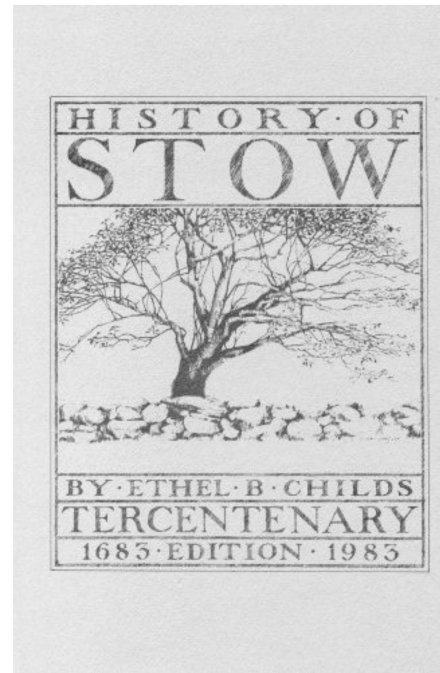
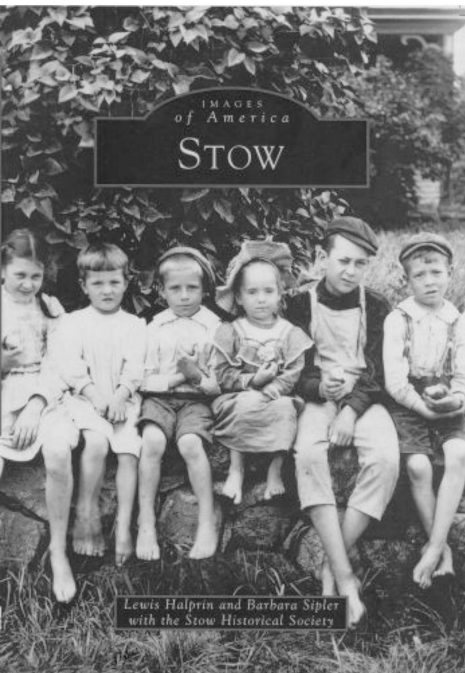
Field Trip Locations - Exterior



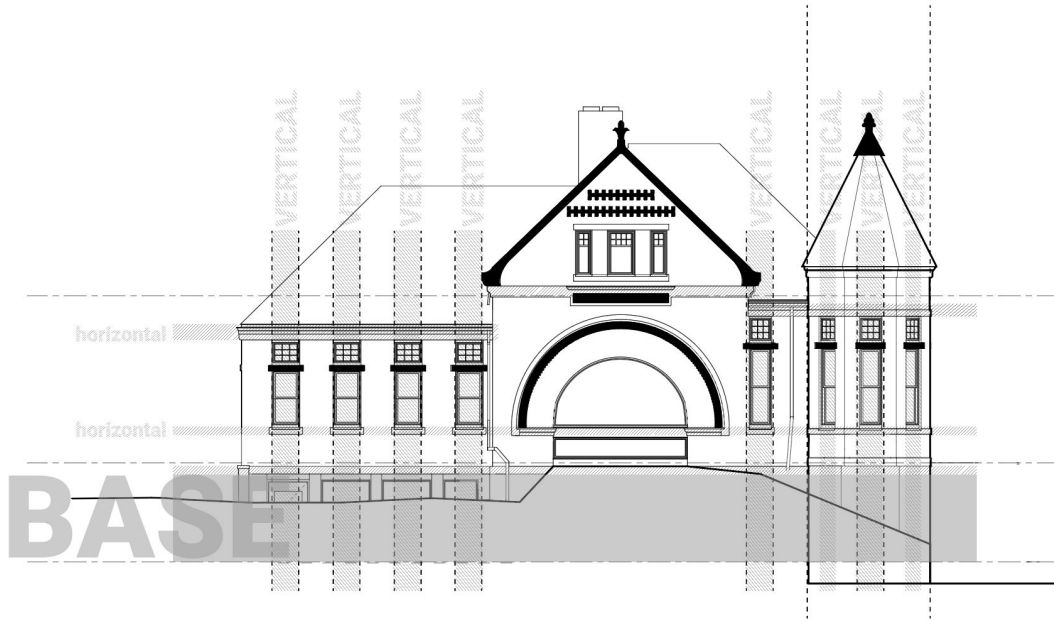
guiding principles

- The character of the addition should be rooted in the context that defines Stow
- Addition should feed distinct, yet complementary, to original Library building as its own 'gem'
- Create a balanced composition of materials, cuing from the defining elements of the original Library
- Composition should include natural materials: fieldstone, copper, slate, wood. Some glass, but not all glass, should be explored.
- Verticality and rhythm are important characteristics to carry from the historic building
 - Gasket should create separation from historic building

Context



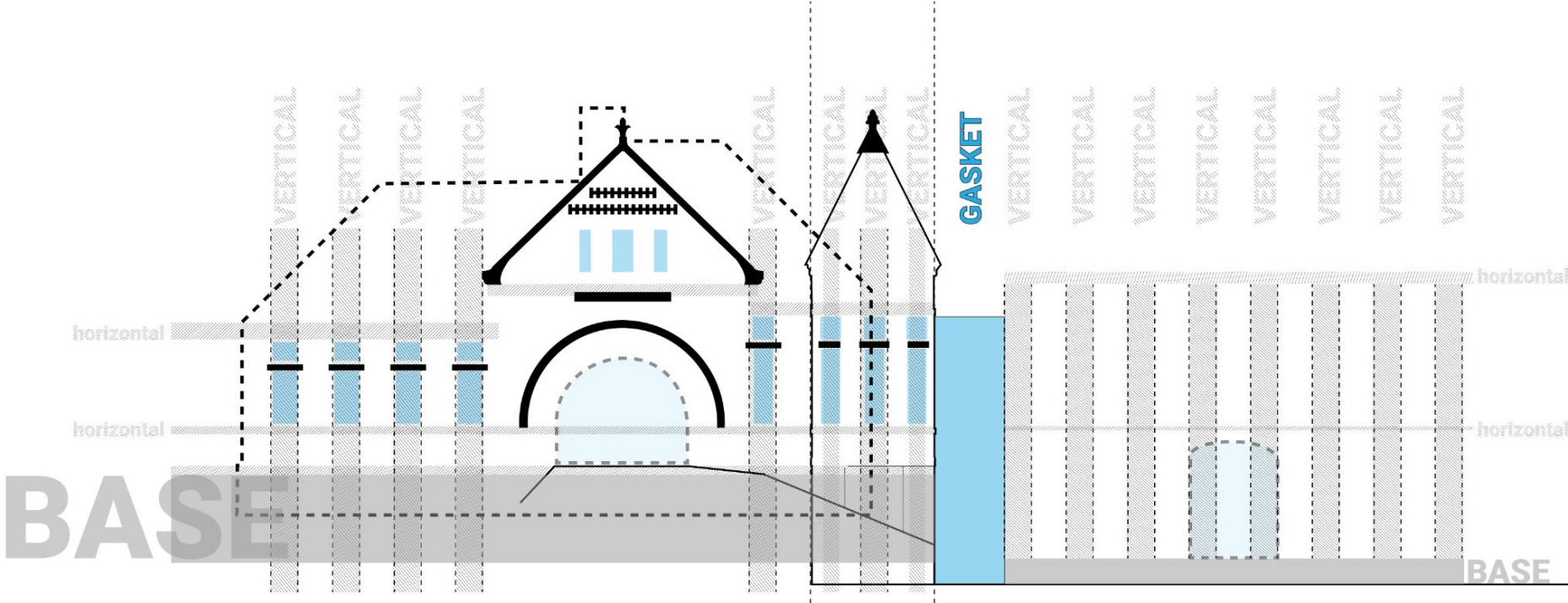
Addition Analysis



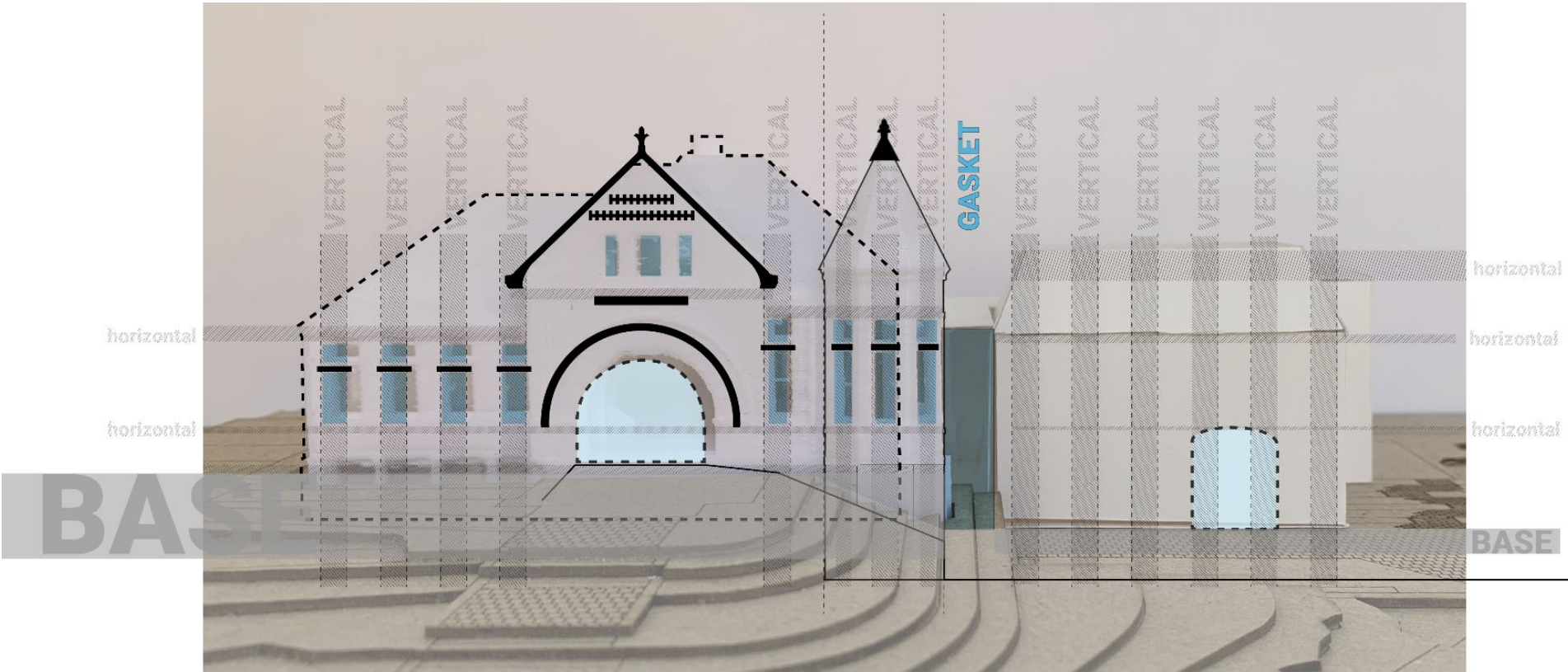
Richardsonian Romanesque

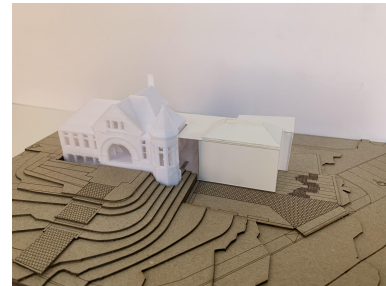
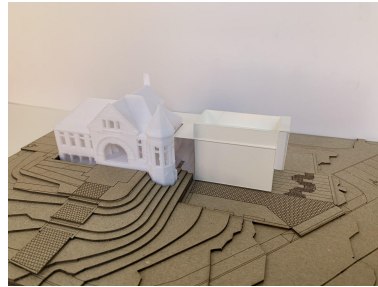
- It emphasizes clear, strong picturesque massing
- round-headed "Romanesque" arches recessed entrances
- richly varied rustication
- blank stretches of walling contrasting with bands of windows,
- cylindrical towers with conical caps embedded in the walling

Addition Analysis

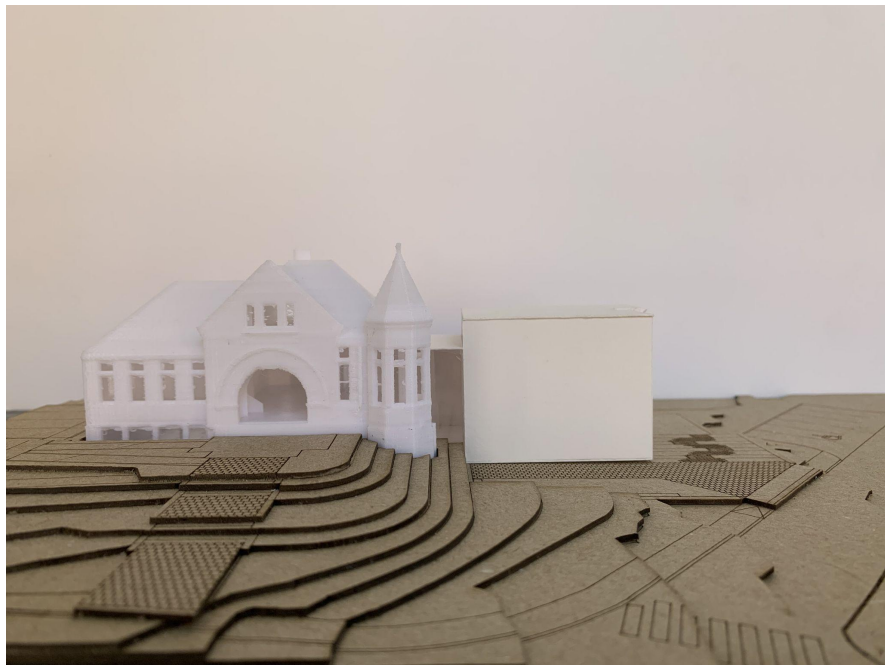


Addition Analysis





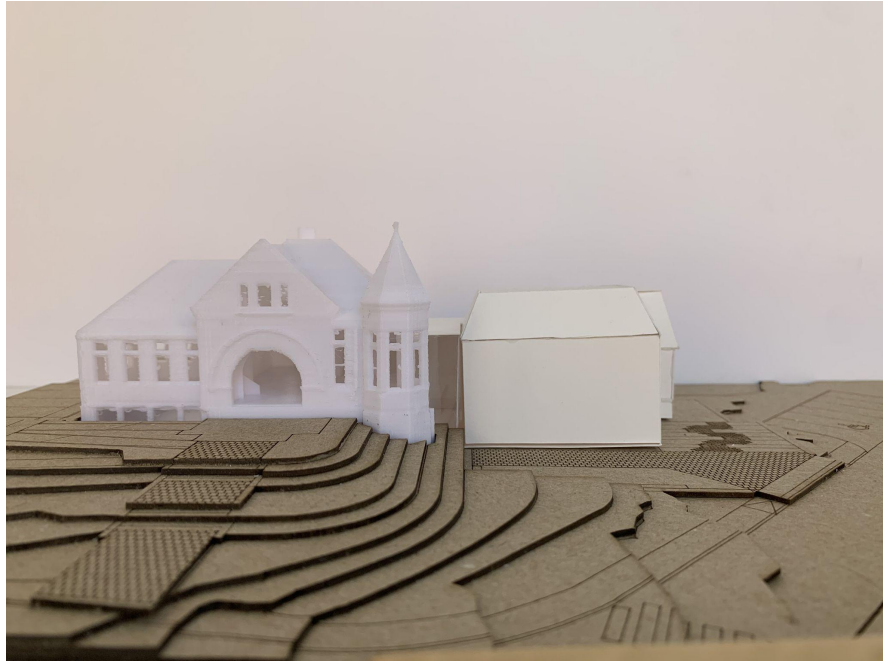
Massing 1



Massing 2



Massing 3



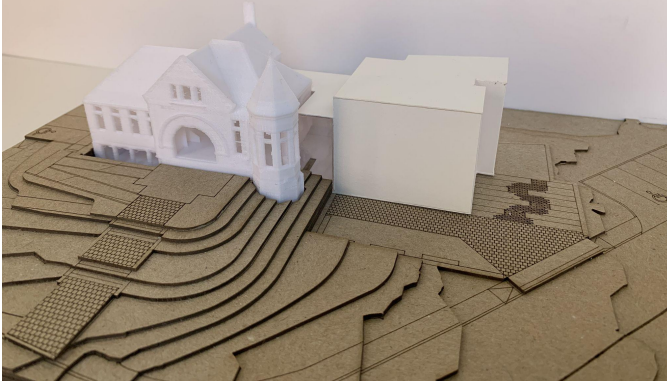
Massing 4



Massing Options

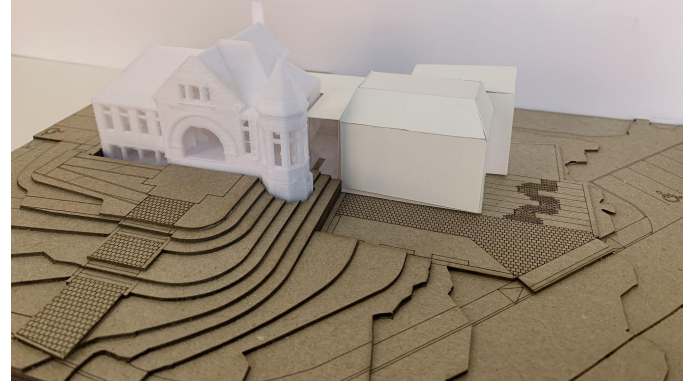
Massing 1

What was estimated



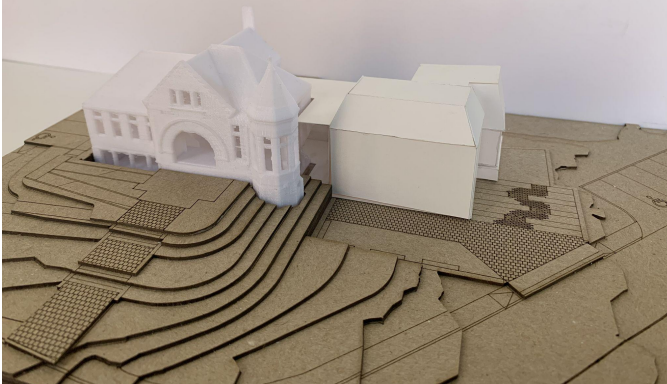
Massing 2

Conceals mechanical equip in roof/attic space



Massing 3

Roofs respond to existing building



Massing 4

Minimizes connection to existing building

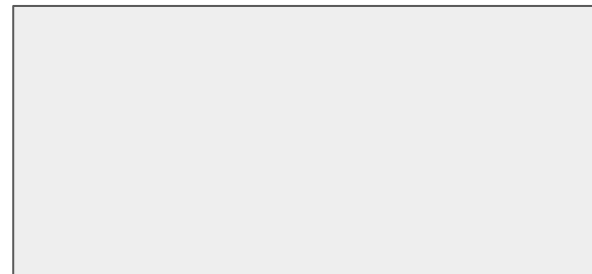


HISTORIC CONTEXT

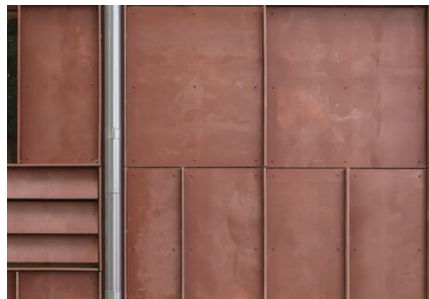


MATERIAL PALETTE

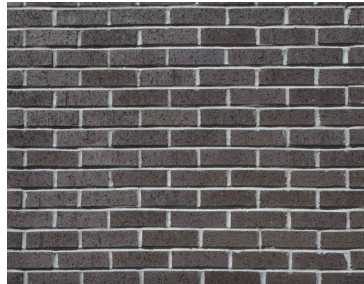
CAP



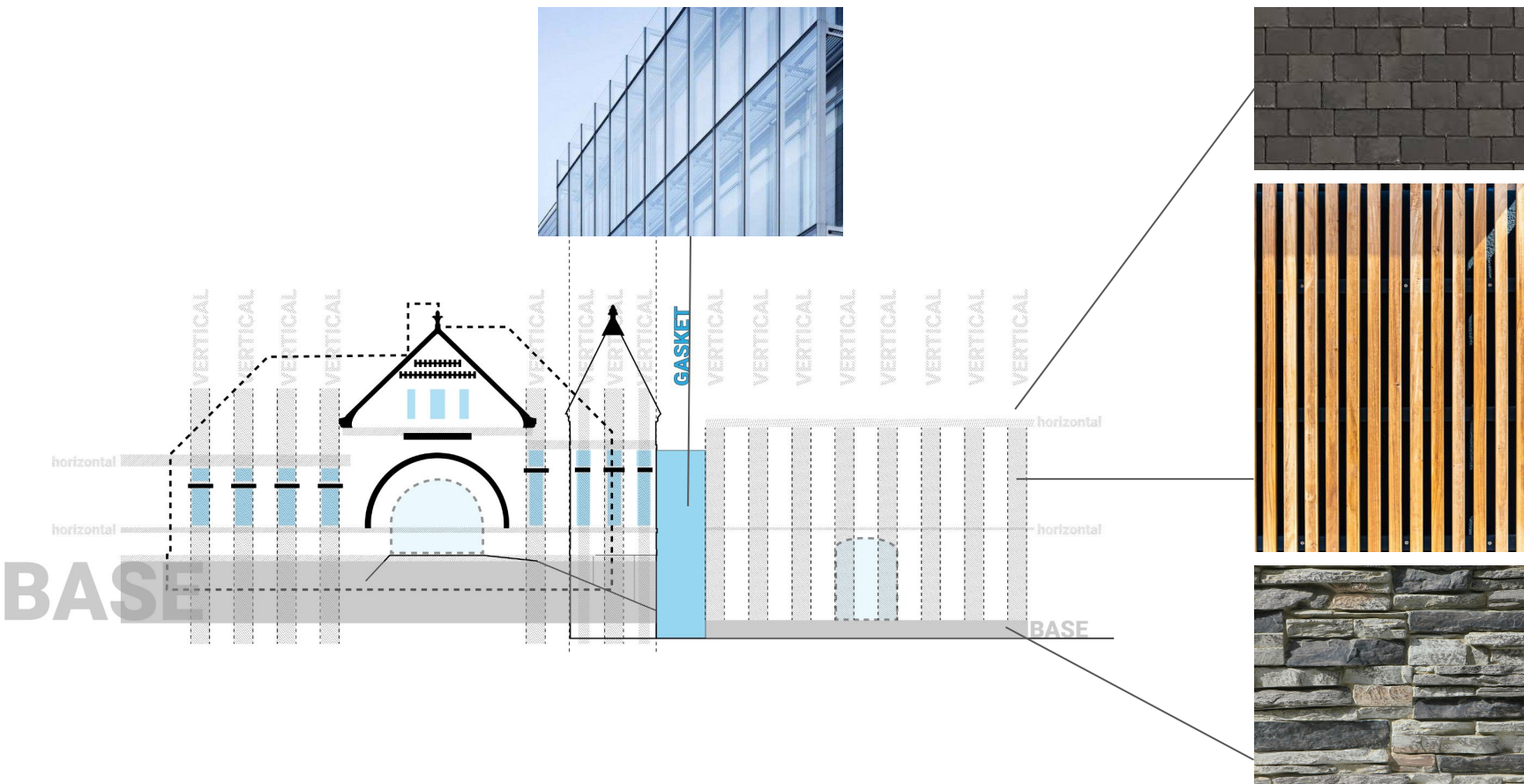
FIELD



BASE



SD PRICING



Today's Agenda

Introductions (10 min)

- Review Work Plan + Process Updates

Exterior Committee (45 min)

- Field Trip Feedback
- Review Goals + Guiding Principles
- Review Existing Building Analysis + Massing Options
- Review Material Palette Options

Landscape (15 min)

- Review Updated Plan
- Cistern Locations
- SD Estimate Review

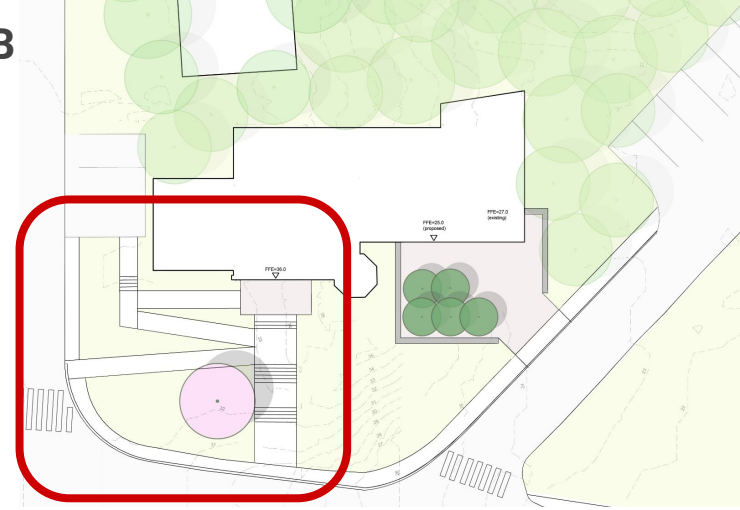
Building Committee (60 min)

- Review Updated Building Program
- Review Updated Plan Options

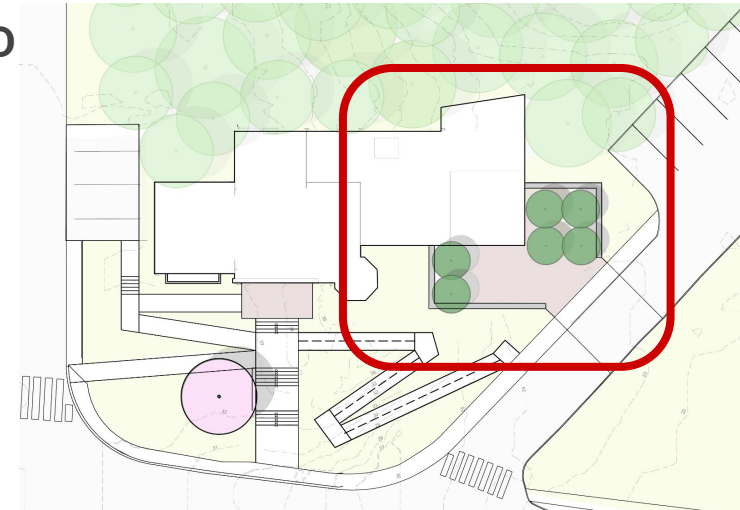
Discussion + Next Steps (15 min)

LANDSCAPE- QUESTIONS + GOALS FOR TODAY SCHEME B

1. Previous feedback:
 - a. Redbud tree to be protected.
 - b. Garden club is active and should have continued involvement.
 - c. Children's story time will be main outdoor program.
 - d. Multiple outdoor gatherings spaces in courtyard
 - e. Gathering on stair platforms
 - f. No need for extensive ramping



SCHEME D



PROPOSED SCHEME



EXISTING GRADE CHANGE

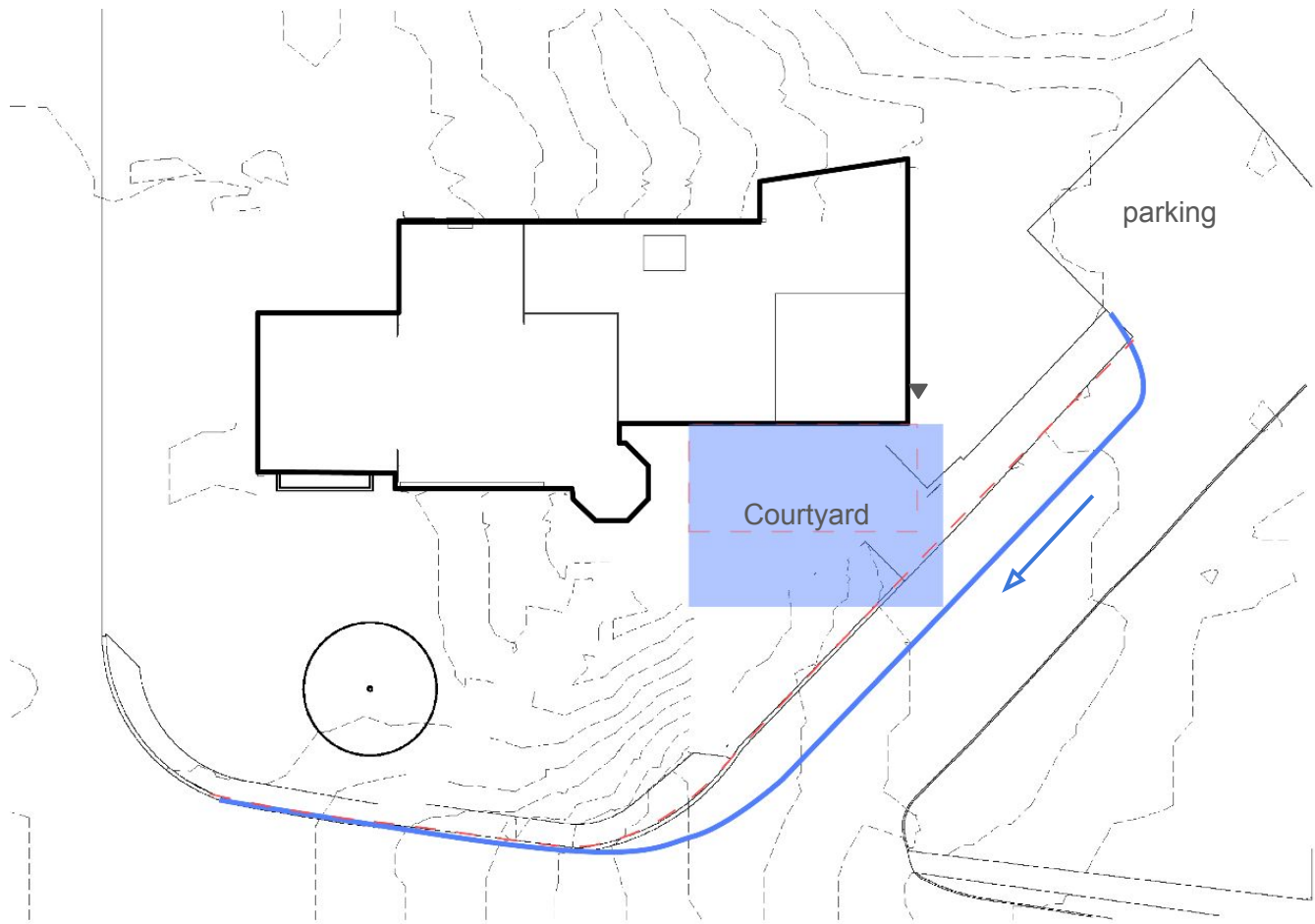


EXISTING FFE ~ +36'

PROPOSED COURTYARD ~ +24-25'

COMMON ROAD- COURTYARD DESIGN IMPACT

One-way

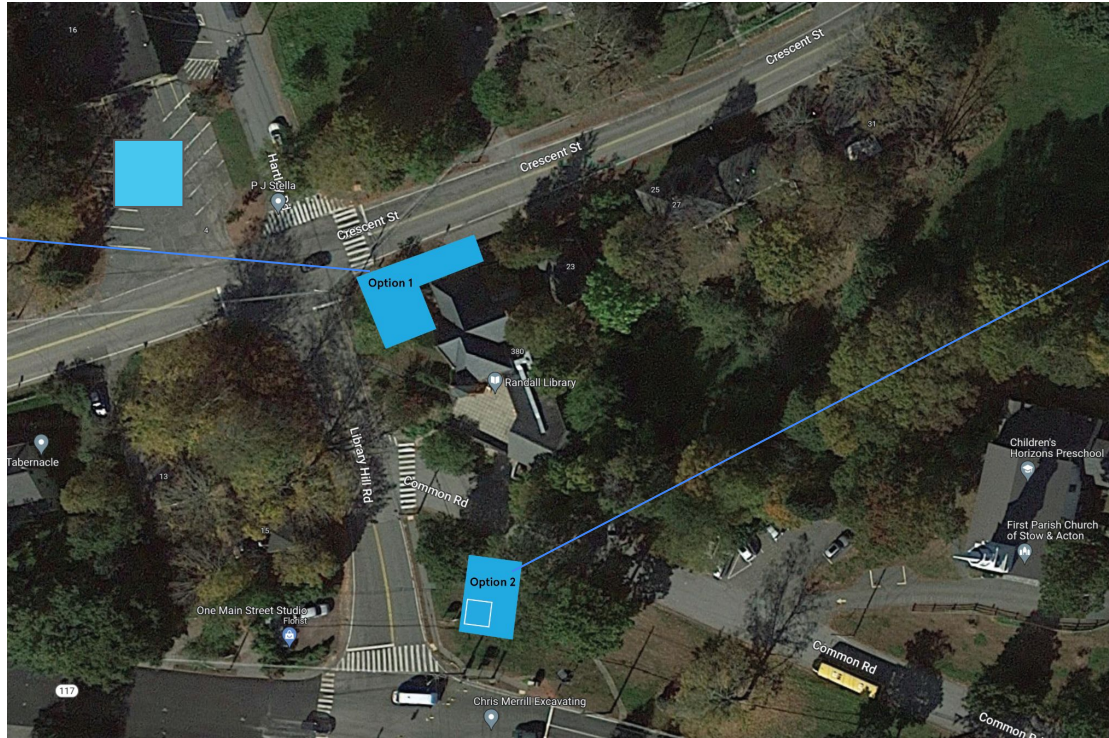




Cistern Location Options

Option 1

- Buried cistern on the crescent street side of the side w/ internal electric fire pump (requires diesel generator).
- Requires 28' of elevation change from grade to floor of fire pump room...



Option 2

- Buried cistern w/ vertical turbine fire pump that requires dedicated headhouse potential on crescent street or, town common but that location is challenging due to septic system and war memorial

Cistern Location Options

Option 3

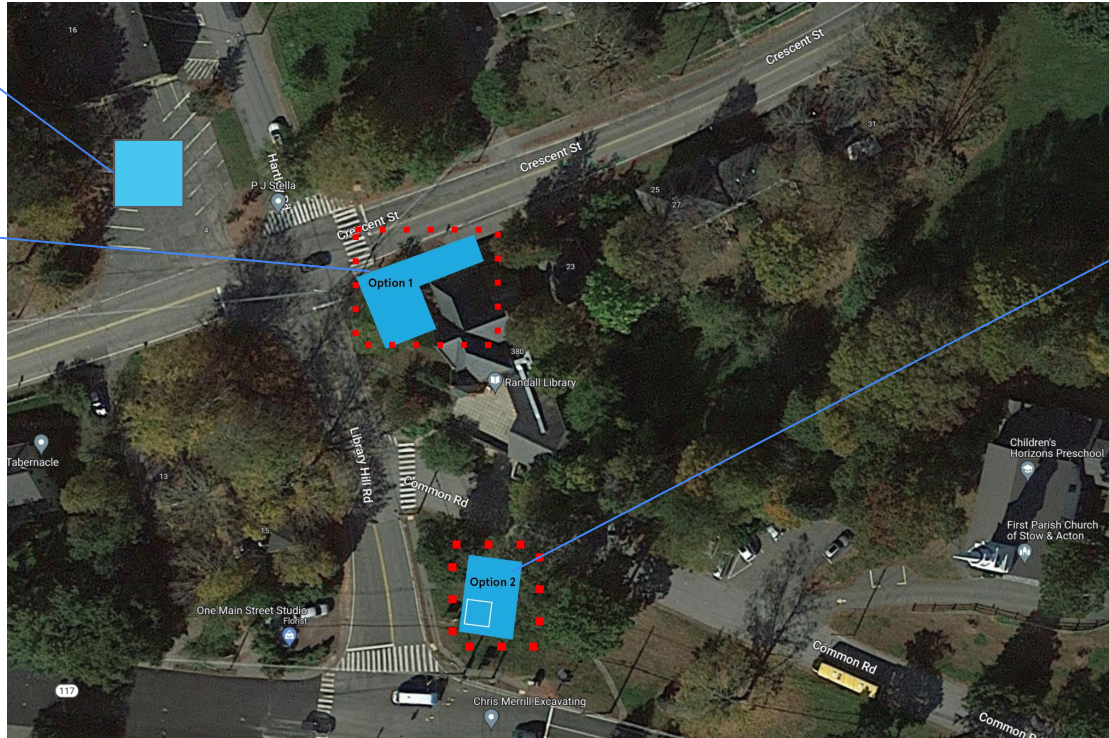
Cistern with head house on site of abandoned fire station

Option 1

-Buried cistern on the crescent street side of the site w/ internal electric fire pump (requires diesel generator).

-Requires 28' of elevation change from grade to floor of fire pump room...

-Bedrock detected ~10' below grade



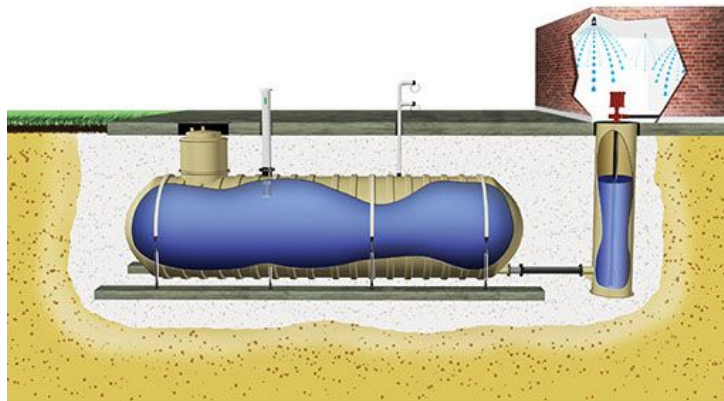
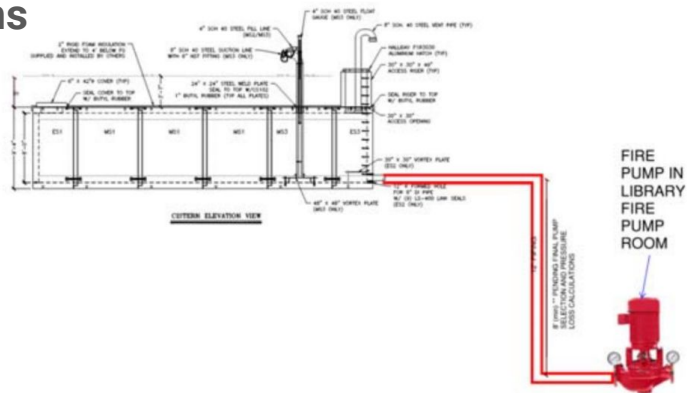
Option 2

Buried cistern w/ vertical turbine fire pump that requires dedicated headhouse potential on crescent street or, town common but that location is challenging due to septic system and war memorial

-Very intrusive in town commons

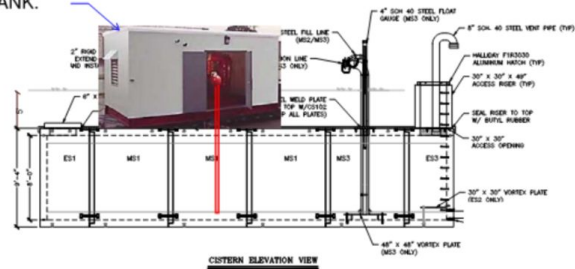
Cistern Options

Option 1



Option 2/3

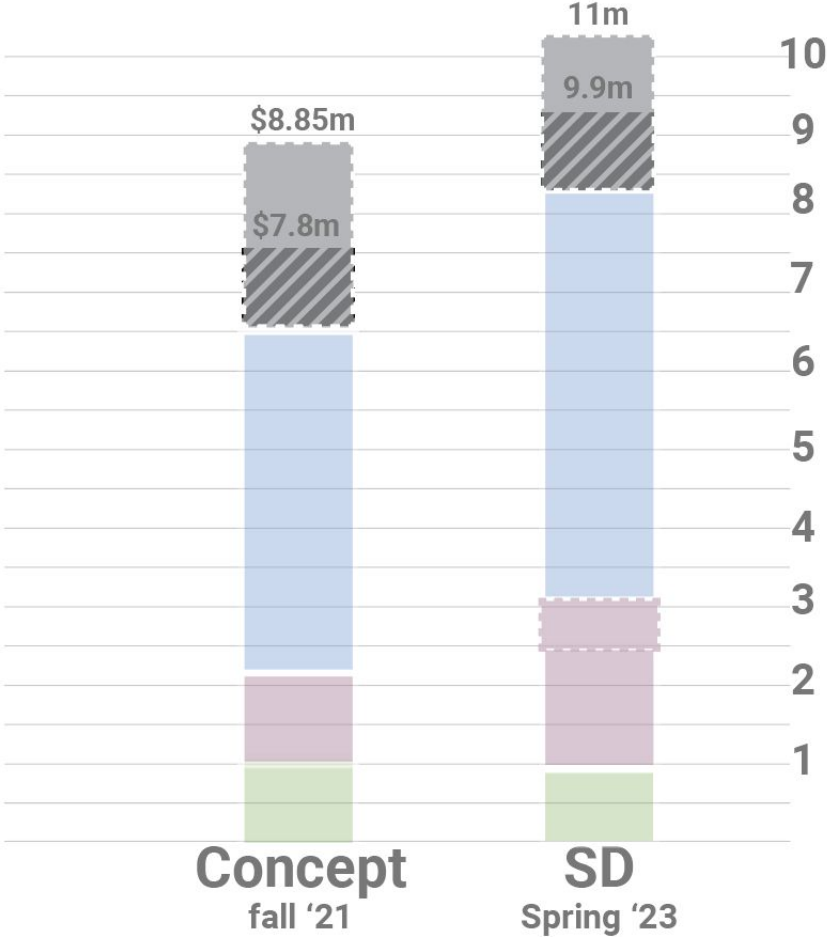
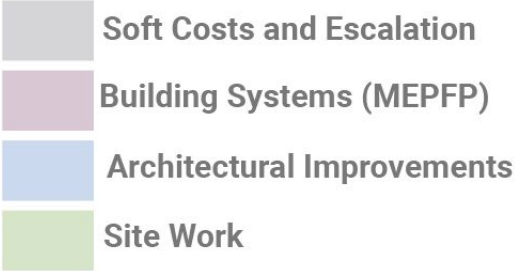
FIRE PUMP
HOUSE /
STRUCTURE ON
TOP OF TANK.



SD Estimate

Estimate

SD Estimate



Today's Agenda

Introductions (10 min)

- Review Work Plan + Process Updates

Exterior Committee (45 min)

- Field Trip Feedback
- Review Goals + Guiding Principles
- Review Existing Building Analysis + Massing Options
- Review Material Palette Options

Landscape (15 min)

- Review Updated Plan
- Cistern Locations
- SD Estimate Review

Building Committee (60 min)

- Review Updated Building Program
- Review Updated Plan Options

Discussion + Next Steps (15 min)

Field Trip Locations - Interior



Staff Feedback

Meeting Rooms

- **3+** Small Rooms for tutors and clubs to meet simultaneously
 - 5-7 People
 - Knitting Club
 - Lego Club
 - Book Club
 - Puzzle Club
- **1** Large Flexible space for up to 30-40
 - Ghost
 - Trivia
 - Cookbook Club

Staff Space

- Storage
- Processing Space
 - Dedicated space
 - Could be behind circ. desk
- Work Room
 - Accessible from circ. Desk
- 2 Staffed Desks

Collection

- 30,000 Volumes
- 2,000 Video
- Library of Things
 - Requires storage and display
- Will remain same size

Teen Space

- Audible Separation
- Visual Supervision
- 2:00-5:00, Arriving from middle school
- Programs
 - Hangout
 - Video games
 - Study
 - Eat
- Enter from upper level
- Two spaces
 - Quiet space
 - Activity Space

Reading

- Not adjacent to children's or YA
- Combine with reference
- Adjacent to computers
- Special Collections
- Audio
- Periodicals

Childrens

- Small storytime
- Prep staging and storage
- Table space
- No separate program space
- No office required

Site

- Keep the "Purple Tree"
- Garden Club needs small space to maintain
- Story time will be the main outdoor program
- Parking
 - Need as many as possible
 - 5 Min spot for book drop
- 2 Entrances
- Dumpster off of Crescent
- One-way street towards Great Rd

Program Statement

STOW RANDALL LIBRARY PROGRAM STATEMENT				
DESIGNLAB ARCHITECTS				
09/16/2021				
	Existing, Increase or New Program Space	Existing Net Assignable Square Footage (NSF)	Proposed Gross Square Feet (GSF)	Notes
LIBRARY SUPPORT SPACES				
Circulation Desk	Increase	246 SF	+ TBD Increase	adjacent to work room
Work Room	Increase	183 SF	150 SF	Processing required
Director's Office	Existing	95 SF	100 SF	
Break Room	New	n/a	TBD SF	
Processing Space	New	n/a	TBD SF	Potential to be within Work Room depending on Work Room location and layout
Sub-TOTAL		524 SF	TBD SF	
COLLECTION				
General Collection	Increase	1397 SF	+ TBD Increase	roughly 30k volumes
Library of Things	New		TBD SF	display and storage
Showing Collection	Additional	n/a	TBD SF	1000-2000 VOLUMES
Reference	Existing	867 SF	867 SF	to be combined with general reading
Sub-TOTAL		1397 SF	TBD SF	
READING				
General Reading	Increase	669 SF	+ TBD Increase	Potential to increase, further evaluation required. May be incorporated into Circulation SF
Quiet Reading	New	n/a	TBD SF	
Sub-TOTAL		669 SF	TBD SF	
YOUNG ADULT				
Collection	Increase	330 SF	+ TBD Increase	1653 volumes
Browsing	New	n/a	TBD SF	
Gathering	New	n/a	TBD SF	Potential to be multi-purpose with other Meeting Room / gathering needs. MOSTLY BETWEEN 2-5 PM. Hangout, videogames, study, eating, enters from upper elevets needs quiet and activity space
Technology	New	n/a	TBD SF	Potential to be multi-purpose with other Technology needs
Sub-TOTAL		330 SF	TBD SF	
CHILDRENS				
Collection	Increase	735 SF	+ TBD Increase	12,249 volumes
Program Room	Increase	330 SF	+ TBD Increase	does not need to be separate from collection, small storytime
Support Space	New	n/a	TBD SF	12-15 programs are messy and building things
Sub-TOTAL		1065 SF	TBD SF	storage for programs and staging, potential office
TECHNOLOGY				
Computer Space	Increase	200 SF	+ TBD Increase	Historic Building, 8 computers
Sub-TOTAL		200 SF	TBD SF	
MEETING SPACE				
Entry hall/Meeting Room	Existing	180 SF	180 SF	New program
West Meeting Room	Existing	321 SF	321 SF	Flexible
West Meeting Room	Existing	508 SF	508 SF	low quiet reading
Small meeting rooms	New	n/a	80-100 each	total
Flexible Meeting space			400	30-40 people
Sub-TOTAL		1009 SF	TBD SF	
BUILDING SUPPORT				
Restrooms	Increase	130 SF	130 SF	3 restrooms
Mechanical	Increase	280 SF	+ TBD Increase	
Electrical Room	New	n/a	TBD SF	
Elevator	New	n/a	TBD SF	
Sub-TOTAL		410 SF	TBD SF	
LANDSCAPE				
Parking			TBD	
Accessible Entry			TBD	
Program Space			TBD	
TOTAL		5604 SF	TBD SF	

Collection Size

Calculations by dLAB

Classification	Shelf Height (inches)	Shelf vertical count	shelf width (feet)	bookcase count (one sided)	avg per LF	open		Totals
1-339	10.25	7	9	3	11	10%		2079
339-973	12.25	6	9	9	10	20%		4860
new non fiction	12	4	3	1	11	20		132
travel	11	4	3	2	15	20		360
oversize	15	2						0
							Non Fiction Total	7431
mystery	10.25	6	9	3	9	18%		1458
Romance	8.25	8	6	1	10.5	5%		504
Fiction	11.25	7	3	30	9	20%		5670
large print	12	3	3	4	9	8		324
Graphic Novels	12	3	3	1	14	15		126
							Fiction Total	8082
YA Fiction	11	7	3	7	9	15%		1323
YA Graphic Novel	12	6	3	1	16	15		288
YA Non-fiction	13	5	3	1	14	20		210
							Teen Total	1821
Childrens picture books	14	3	3	12	28			3024
childrens nonfiction/reference/poetry	16	4	3	2	25	5%		600
childrens nonfiction/reference/poetry	11.5	5	3	6	25	5%		2250
Kid's chapter books	12	5	2	2	13	5%		260
Kid's chapter books	12	5	3	8	13	5%		1560
Easy readers	10	6	3	8	26	10%		3744
Easy Readers	10	2	2.3	1	26			119.6
Baby	12	3	3	1	20			180
junior graphic novels	12	6	3	1	23			414
							Children's Total	12151.6

Counts from Randall Library

Adult

- 15,737 books
- 1,792 video
- 1,922 audio (books on CD/music CD)

Young Adult

- 1,653 books
- 0 video
- 38 audio

Children's

- 12,249 books
- 602 video
- 193 audio



Previous Notes

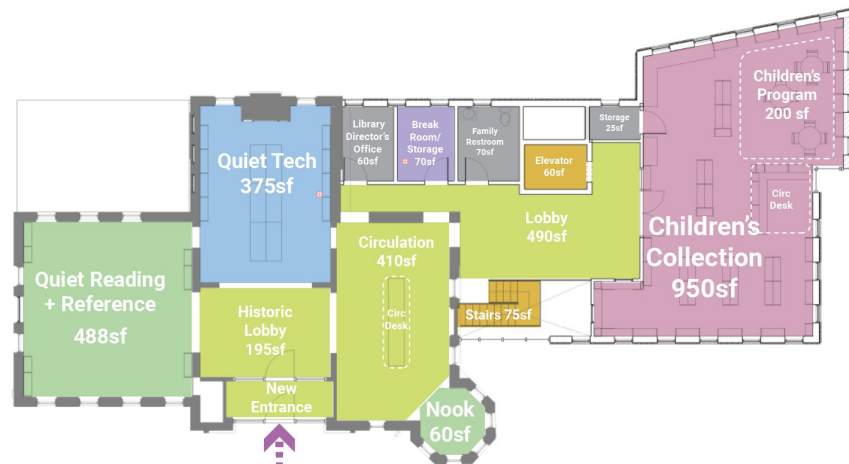
- The library should be as accessible as possible. A ramp and 3-stop elevator should be available.
- There should be a separate entrance for the flexible meeting room. Wall should be able to open like at WBL
- The teens may want access to the exterior.
- Teens will mostly enter from the historic entry, Teen space will not want to be next to or within children's space.
- Switch work room and restrooms in corner of option 1

Action Items

- Community Living Room Corner
- Exterior Terrace
- Seating Area Size
- Meeting Room Capacity

Closed Corner Option

- Large Browsing and Arrival
- Library collection in Collections and Browsing and Arrival
- Program on exterior walls
- Simplified Massing
- Program space in Collection
- Meeting Room Security (after hours)
- Small Meeting Rooms and Teen Lounge located off Collection Space
- Views out
- Straight ramp
- Ramp and Elevator centrally located

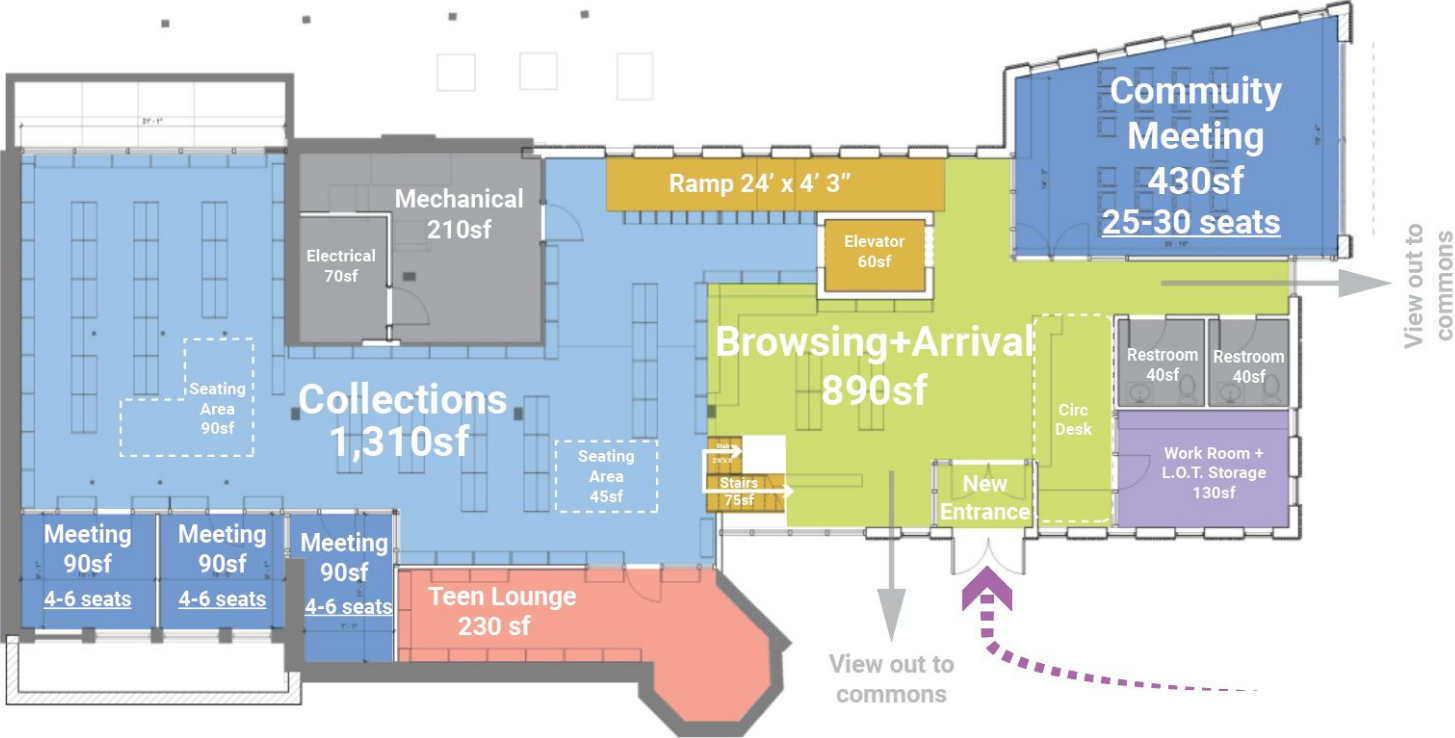


Level 2



Lower Level

Closed Corner Option - Lower Level



Browsing and Arrival



Meeting Rooms



Collections



Teen Lounge



Community Room



Community Room



Closed Corner Option - Level 2



Historic Spaces



Circulation

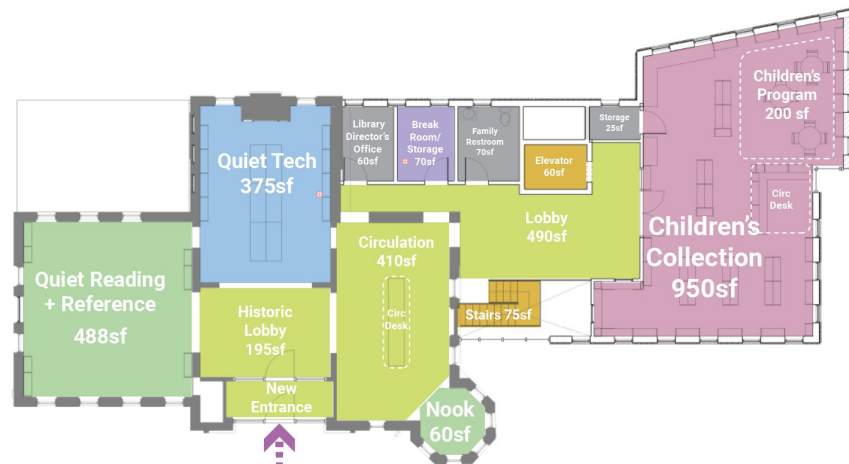


Children's Collection



Closed Corner Option

- Large Browsing and Arrival
- Library collection in Collections and Browsing and Arrival
- Program on exterior walls
- Simplified Massing
- Program space in Collection
- Meeting Room Security (after hours)
- Small Meeting Rooms and Teen Lounge located off Collection Space
- Views out
- Straight ramp
- Ramp and Elevator centrally located



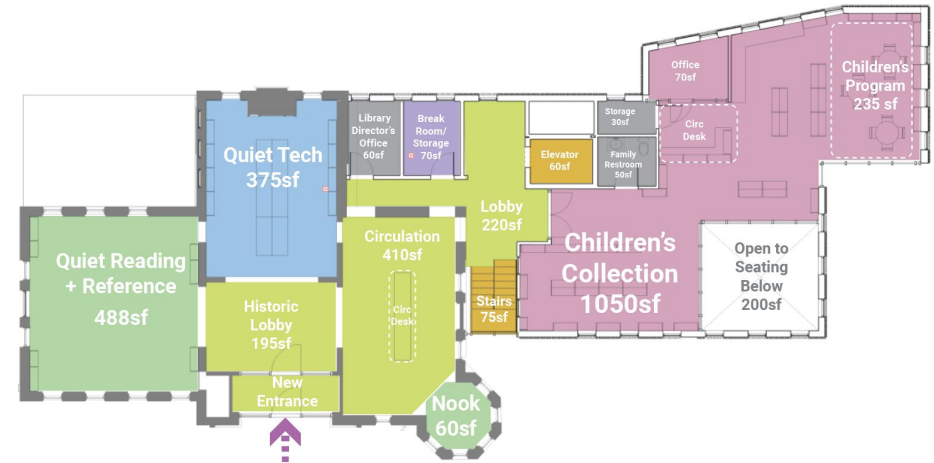
Level 2



Lower Level

Open Corner Option

- Double height Community Living Room
- Larger Collection Space
- Library collection in Collections
- Storage in Community Meeting
- Storage and office in Children's Collection
- Circulation centrally located in gasket
- Small Meeting Rooms and Teen Lounge located off Collection Space

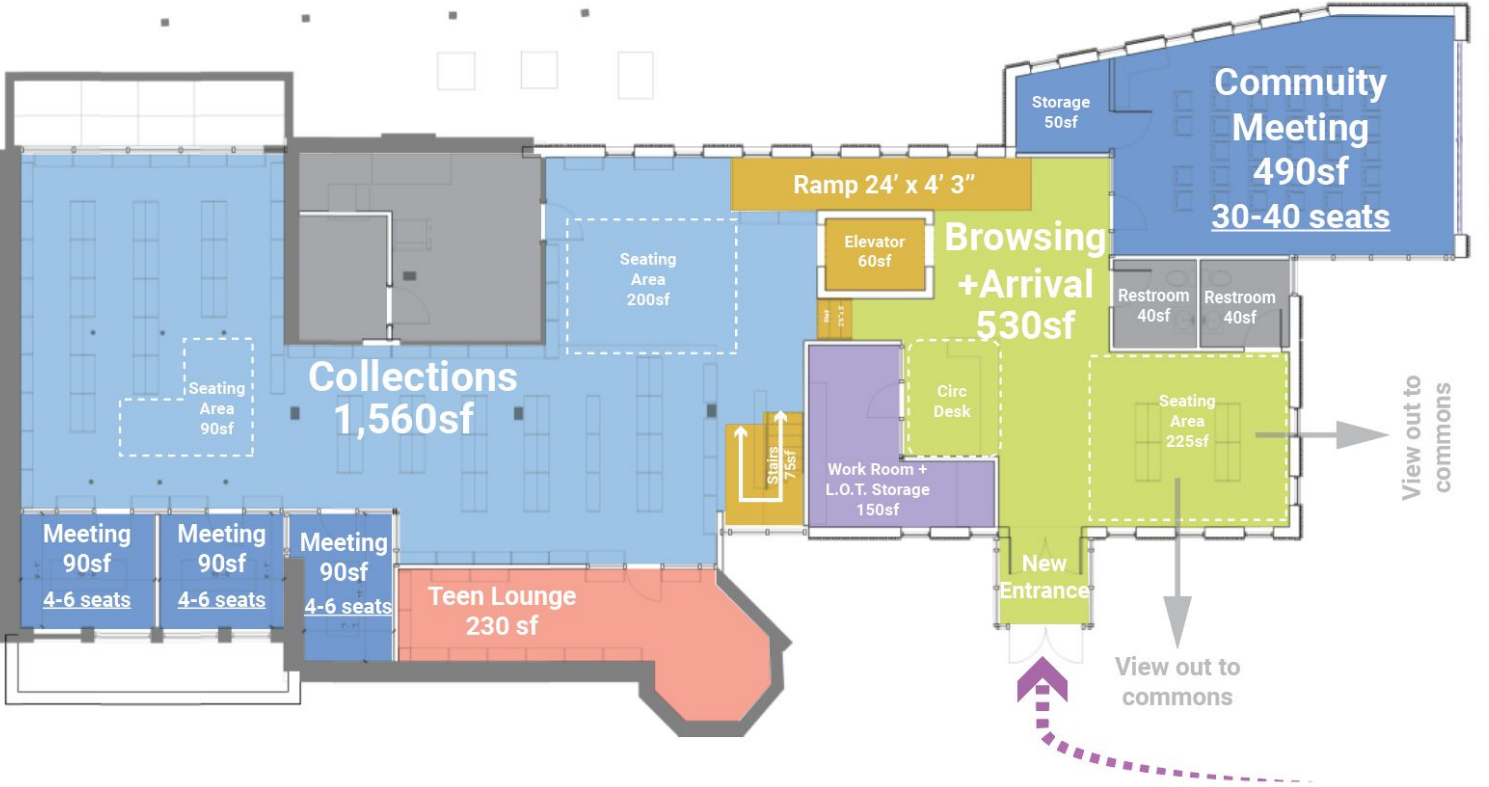


Level 2



Lower Level

Open Corner Option - Lower Level



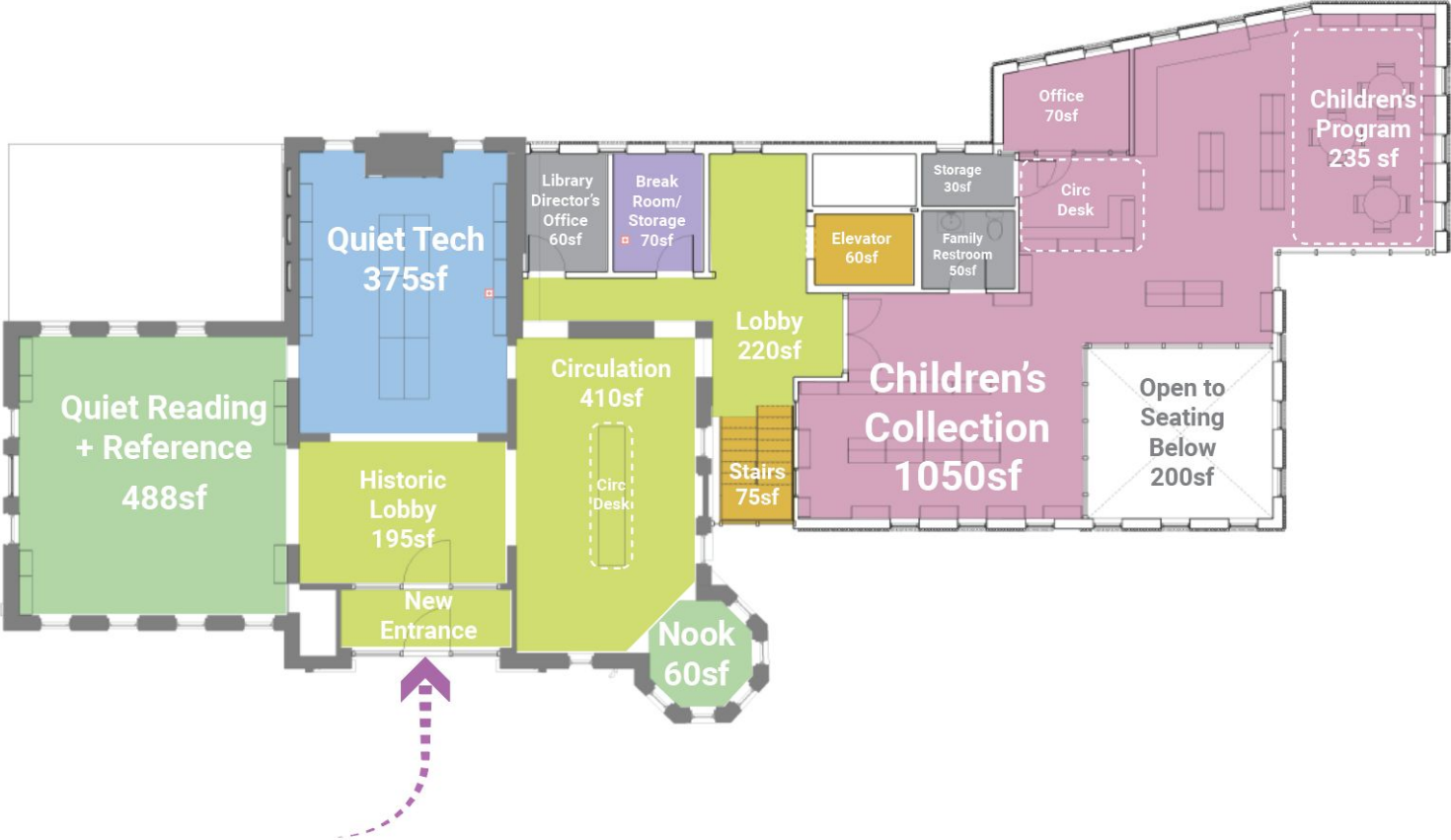
Community Living Room



Exterior Vestibule



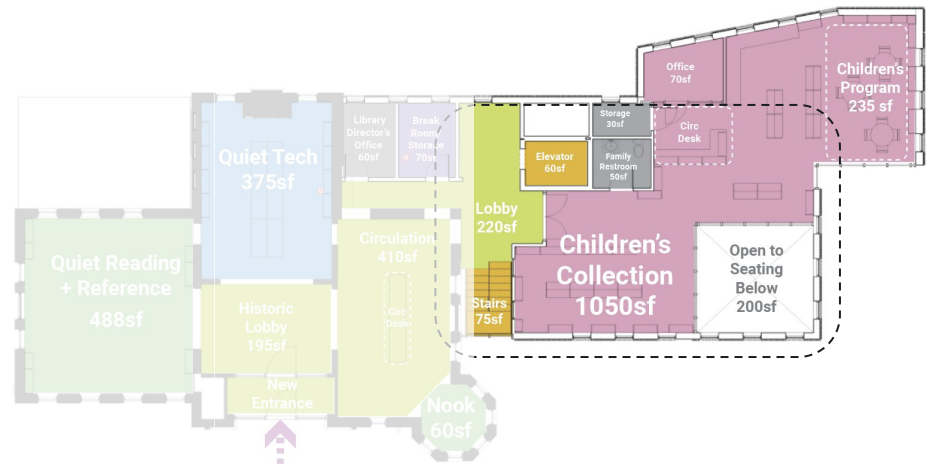
Open Corner Option - Level 2



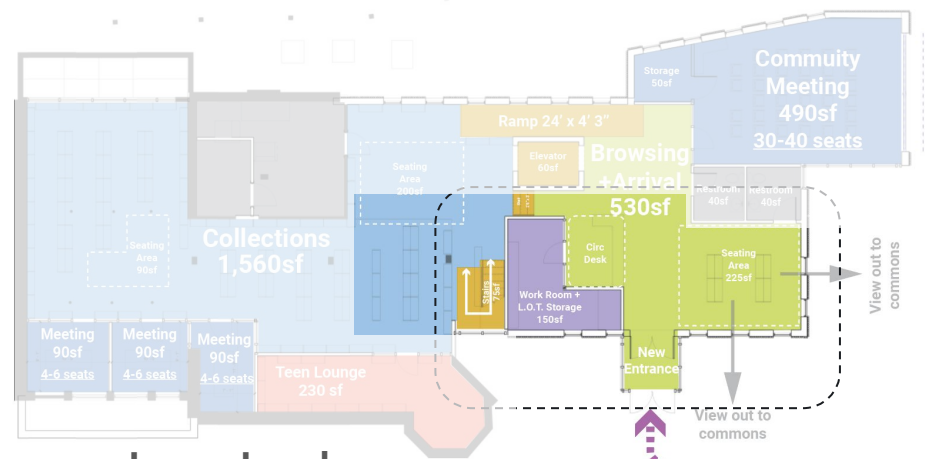
Children's Collection



Open Corner Option

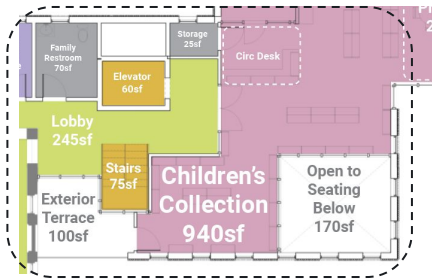


Level 2

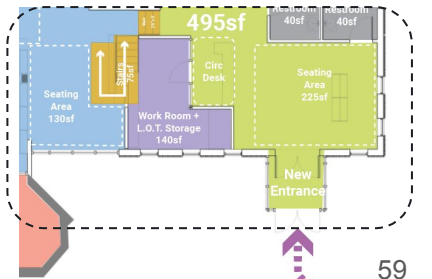


Lower Level

Open Corner Option 2

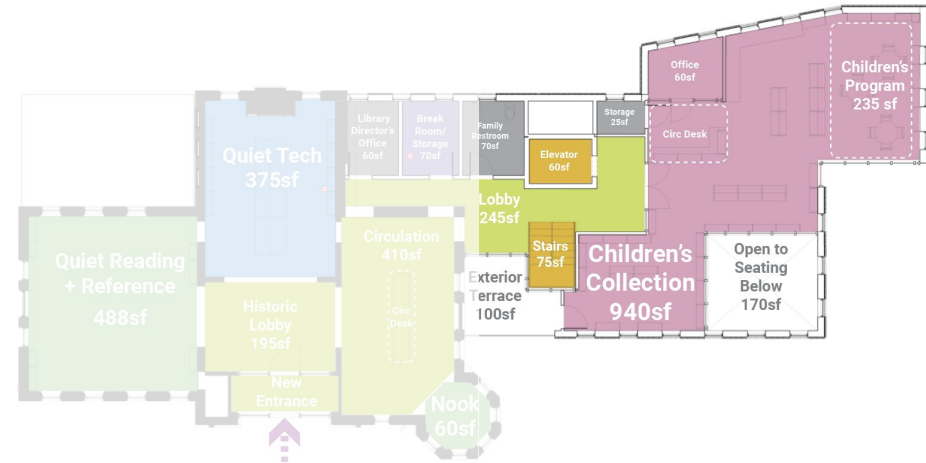


- Exterior Terrace off Children's Collection
- More seating in Collection Space
- Condensed Circulation

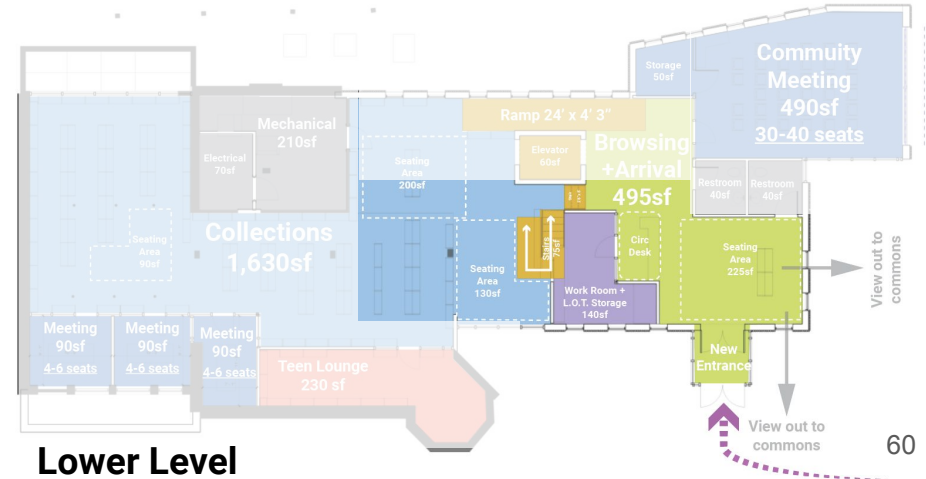


Open Corner Option 2

- Exterior Terrace off **Children's Collection**
- Most seating in **Collection Space**
- **Condensed Circulation**
- **Double height Community Living Room**
- Library collection in **Collections**
- Storage in **Community Meeting**
- Storage and office in **Children's Collection**
- Small **Meeting Rooms** and **Teen Lounge** located off **Collection Space**



Level 2



Lower Level

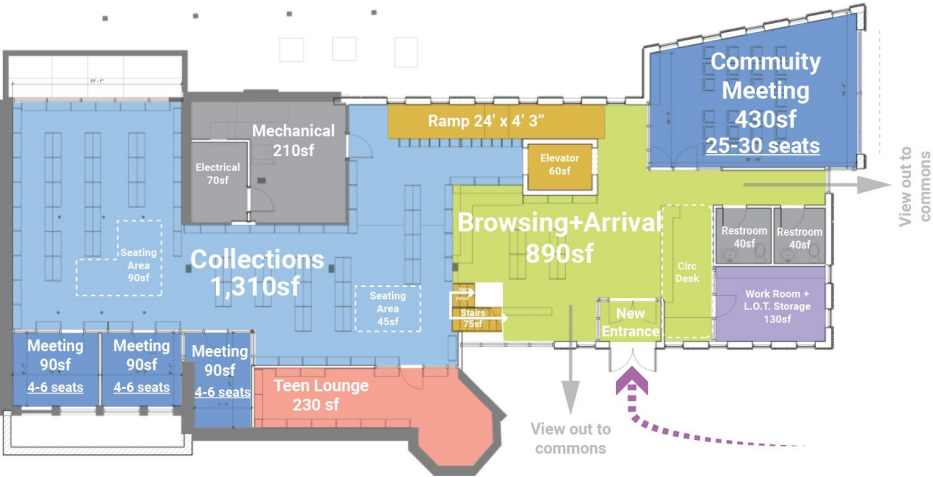
Exterior Terrace



Lower Level

Closed Corner Option

Open Corner Option



Level 2

Closed Corner Option

Open Corner Option



Closed Corner Option

- Large Browsing and Arrival
- Library collection in Collections and Browsing and Arrival
- Program on exterior walls
- Simplified Massing



Open Corner Option

- Double height Community Living Room
- Library collection consolidated into Larger Collection Space
- Storage for Community Meeting
- Storage and office in Children's Collection



- Program space in Collection
- Meeting Room
- Security (after hours)
- Small Meeting Rooms and Teen Lounge located off Collection Space
- Views out
- Straight ramp

Collection Size

Calculations by dLAB

Classification	Shelf Height (inches)	Shelf vertical count	shelf width (feet)	bookcase count (one sided)	avg per LF	open		Totals
1-339	10.25	7	9	3	11	10%		2079
339-973	12.25	6	9	9	10	20%		4860
new non fiction	12	4	3	1	11	20		132
travel	11	4	3	2	15	20		360
oversize	15	2						0
							Non Fiction Total	7431
mystery	10.25	6	9	3	9	18%		1458
Romance	8.25	8	6	1	10.5	5%		504
Fiction	11.25	7	3	30	9	20%		5670
large print	12	3	3	4	9	8		324
Graphic Novels	12	3	3	1	14	15	Fiction Total	8082
YA Fiction	11	7	3	7	9	15%		1323
YA Graphic Novel	12	6	3	1	16	15		288
YA Non-fiction	13	5	3	1	14	20	Teen Total	1821
Childrens picture books	14	3	3	12	28			3024
childrens nonfiction/reference/poetry	16	4	3	2	25	5%		600
childrens nonfiction/reference/poetry	11.5	5	3	6	25	5%		2250
Kid's chapter books	12	5	2	2	13	5%		260
Kid's chapter books	12	5	3	8	13	5%		1560
Easy readers	10	6	3	8	26	10%		3744
Easy Readers	10	2	2.3	1	26			119.6
Baby	12	3	3	1	20			180
junior graphic novels	12	6	3	1	23			414
							Children's Total	12151.6

Counts from Randall Library

Adult

- 15,737 books
- 1,792 video
- 1,922 audio (books on CD/music CD)

Young Adult

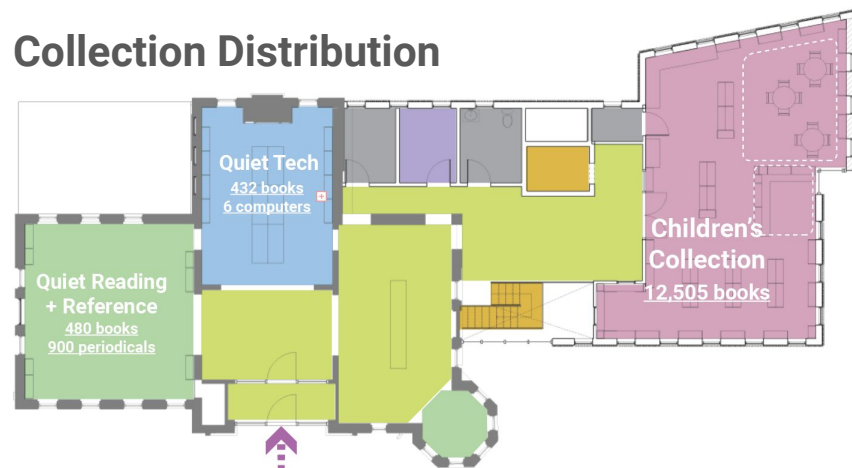
- 1,653 books
- 0 video
- 38 audio

Children's

- 12,249 books
- 602 video
- 193 audio



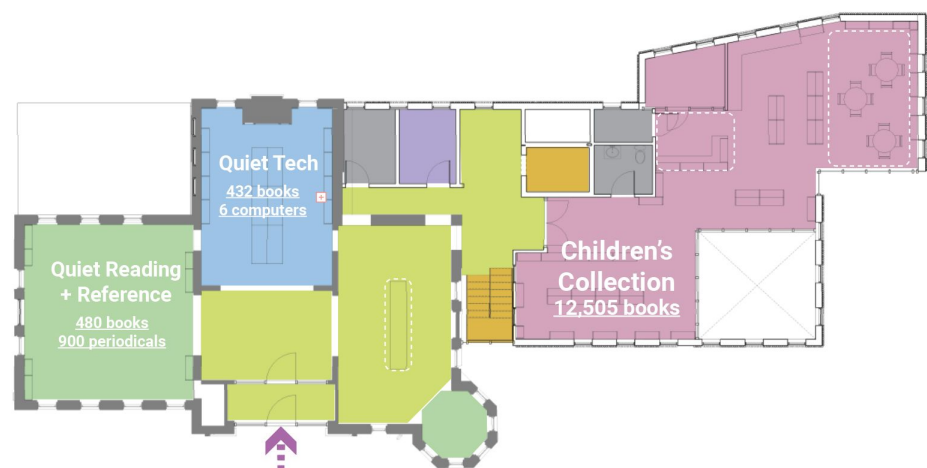
Collection Distribution



Level 2



Lower Level



Level 2



Lower Level

Closed Corner Option



Open Corner Option



Action Items

- Community Living Room Corner
- Exterior Terrace
- Seating Area Size
- Meeting Room Capacity

Today's Agenda

Introductions (10 min)

- Review Work Plan + Process Updates

Exterior Committee (45 min)

- Field Trip Feedback
- Review Goals + Guiding Principles
- Review Existing Building Analysis + Massing Options
- Review Material Palette Options

Landscape (15 min)

- Review Updated Plan
- Cistern Locations
- SD Estimate Review

Building Committee (60 min)

- Review Updated Building Program
- Review Updated Plan Options

Discussion + Next Steps (15 min)

Next Steps

- **WS4**
 - **MEPFP Engineer update**
 - **Landscape Design Update**
- **Schedule dept meetings**
- **Design Development Phase**
- **Exterior Materials**

End

South Providence Library

- Probably don't need this next section/sequence? Keep in back to refer to if needed?



Hyde Park Library



Walnut Hill Arts Center



Rasmussen Education Center

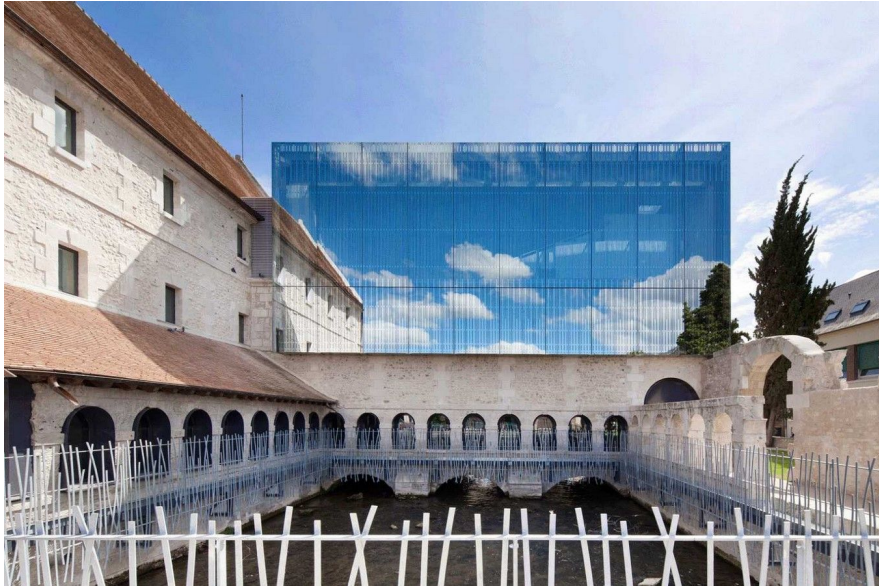


Whitin Observatory



West Branch Library



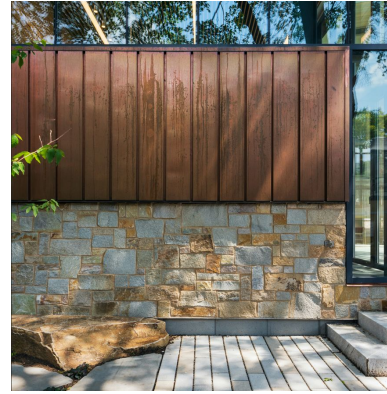


Louvre Music Building



Medieval Mile Museum

Palette + Composition



Staff Feedback

Meeting Rooms

- **3+** Small Rooms for tutors and clubs to meet simultaneously
 - 5-7 People
 - Knitting Club
 - Lego Club
 - Book Club
 - Puzzle Club
- **1** Large Flexible space for up to 30-40
 - Ghost
 - Trivia
 - Cookbook Club

Staff Space

- Storage
- Processing Space
 - Dedicated space
 - Could be behind circ. desk
- Work Room
 - Accessible from circ. Desk
- 2 Staffed Desks

Collection

- 30,000 Volumes
- 2,000 Video
- Library of Things
 - Requires storage and display
- Will remain same size

Teen Space

- Audible Separation
- Visual Supervision
- 2:00-5:00, Arriving from middle school
- Programs
 - Hangout
 - Video games
 - Study
 - Eat
- Enter from upper level
- Two spaces
 - Quiet space
 - Activity Space

Reading

- Not adjacent to children's or YA
- Combine with reference
- Adjacent to computers
- Special Collections
- Audio
- Periodicals

Childrens

- Small storytime
- Prep staging and storage
- Table space
- No separate program space
- No office required

Site

- Keep the "Purple Tree"
- Garden Club needs small space to maintain
- Story time will be the main outdoor program
- Parking
 - Need as many as possible
 - 5 Min spot for book drop
- 2 Entrances
- Dumpster off of Crescent
- One-way street towards Great Rd

