

# SITE PLAN

# 108-118 GREAT ROAD

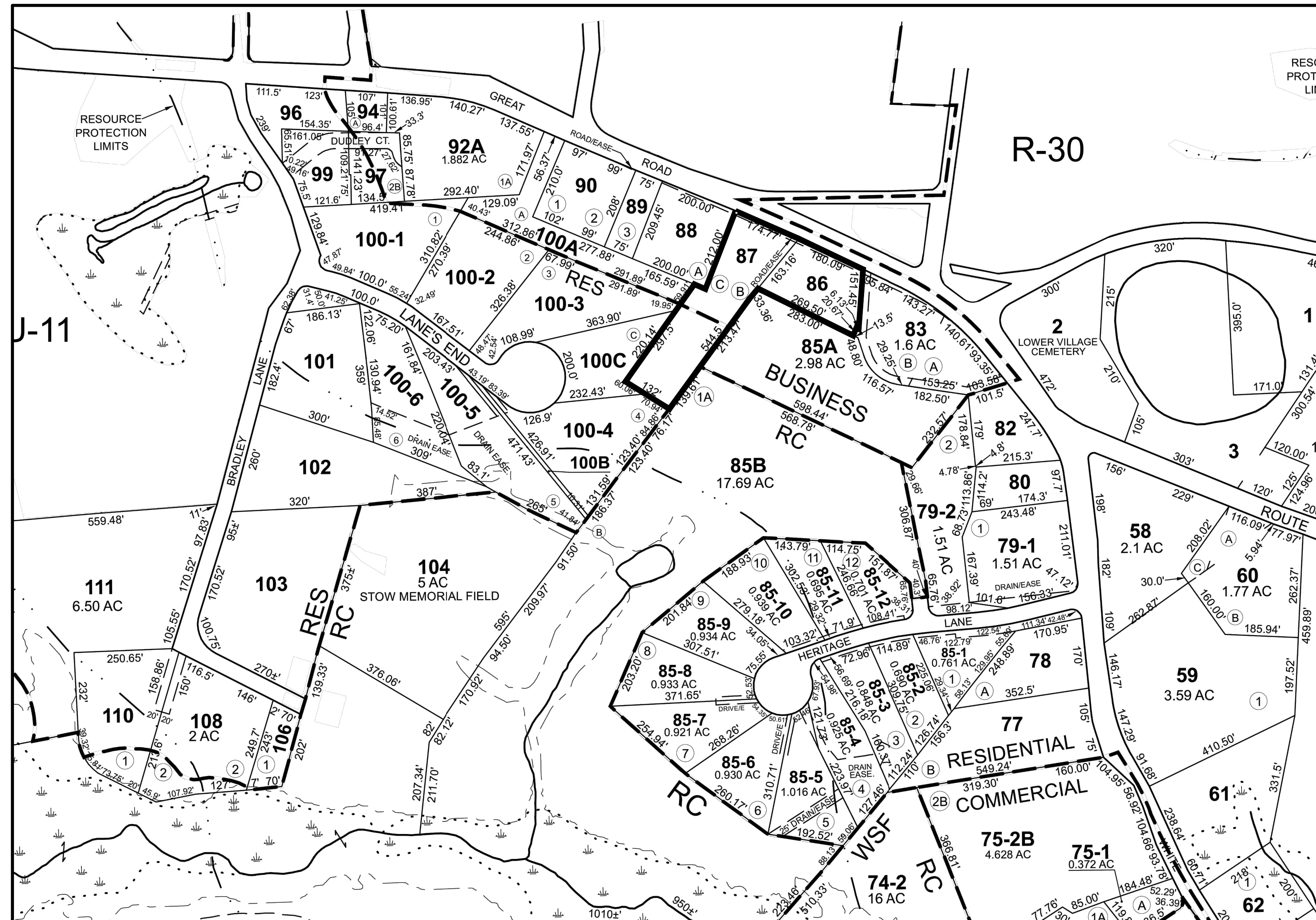
## STOW, MASSACHUSETTS

JULY 30, 2019

REVISED: OCTOBER 25, 2019

REVISED: DECEMBER 14, 2020

REVISED: NOVEMBER 2, 2023

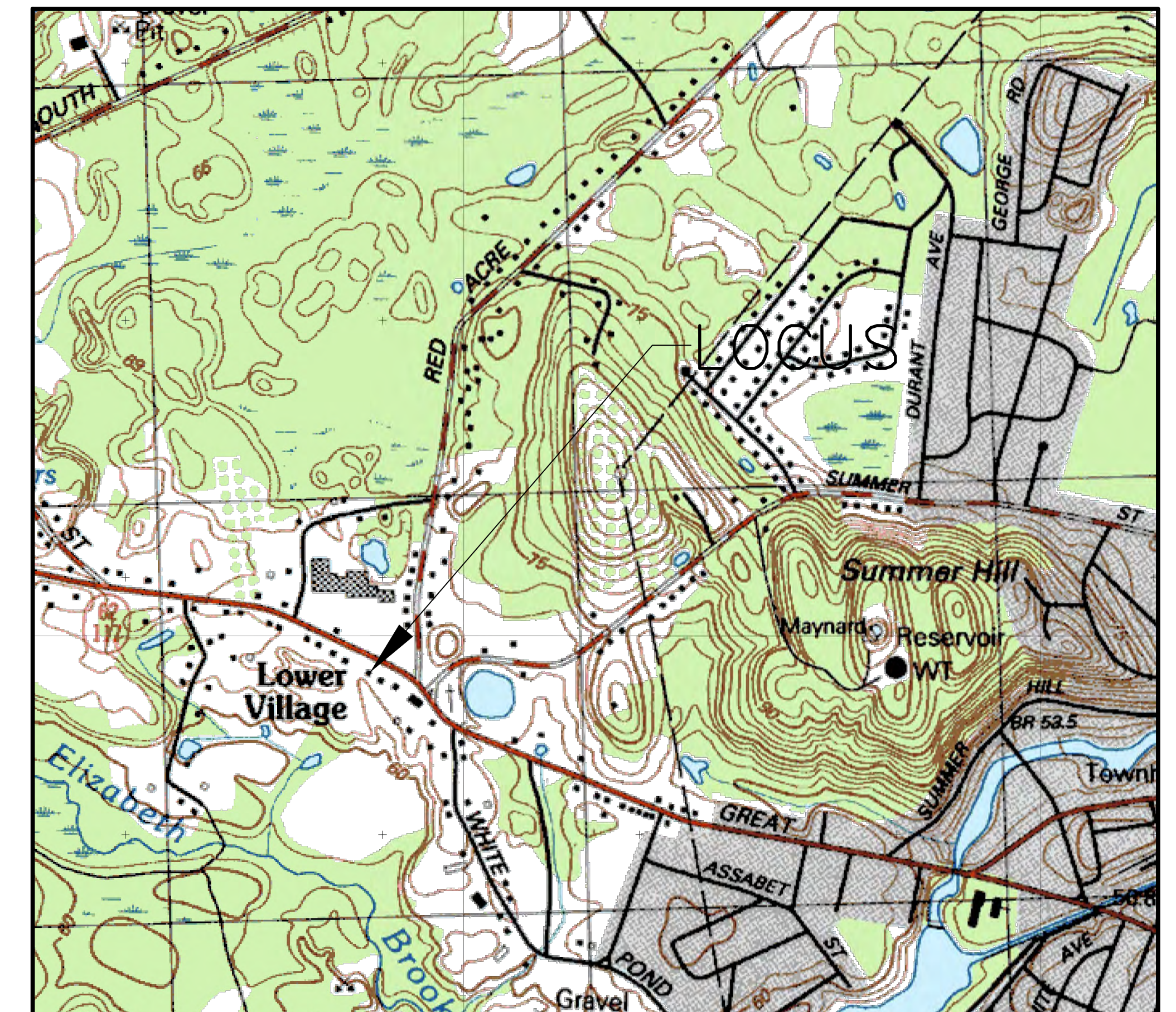


STOW PLANNING BOARD

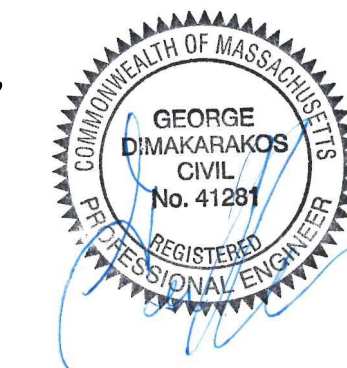
LOCUS MAP  
SCALE: 1"=200'

### PLAN INDEX

SHEET 1	COVER SHEET
SHEET 2	SITE DEVELOPMENT PLAN
SHEET 3	LAYOUT PLAN
SHEET 4	CONSTRUCTION DETAILS PLAN
SHEET 5	STORMWATER POLLUTION PREVENTION PLAN



LOCUS MAP  
SCALE: 1"=1200'



### APPLICANT/RECORD OWNER

JKC PROPERTIES LLC  
14 NASON STREET SUITE 302  
MAYNARD, MA

### REFERENCES

MIDDLESEX REGISTRY OF DEEDS  
SOUTH DISTRICT  
DEED BOOK 72042 PAGE 557  
PLAN No. 1024 OF 1974

TOWN MAP R29 PARCELS 86 & 87

### ENGINEER/SURVEYOR

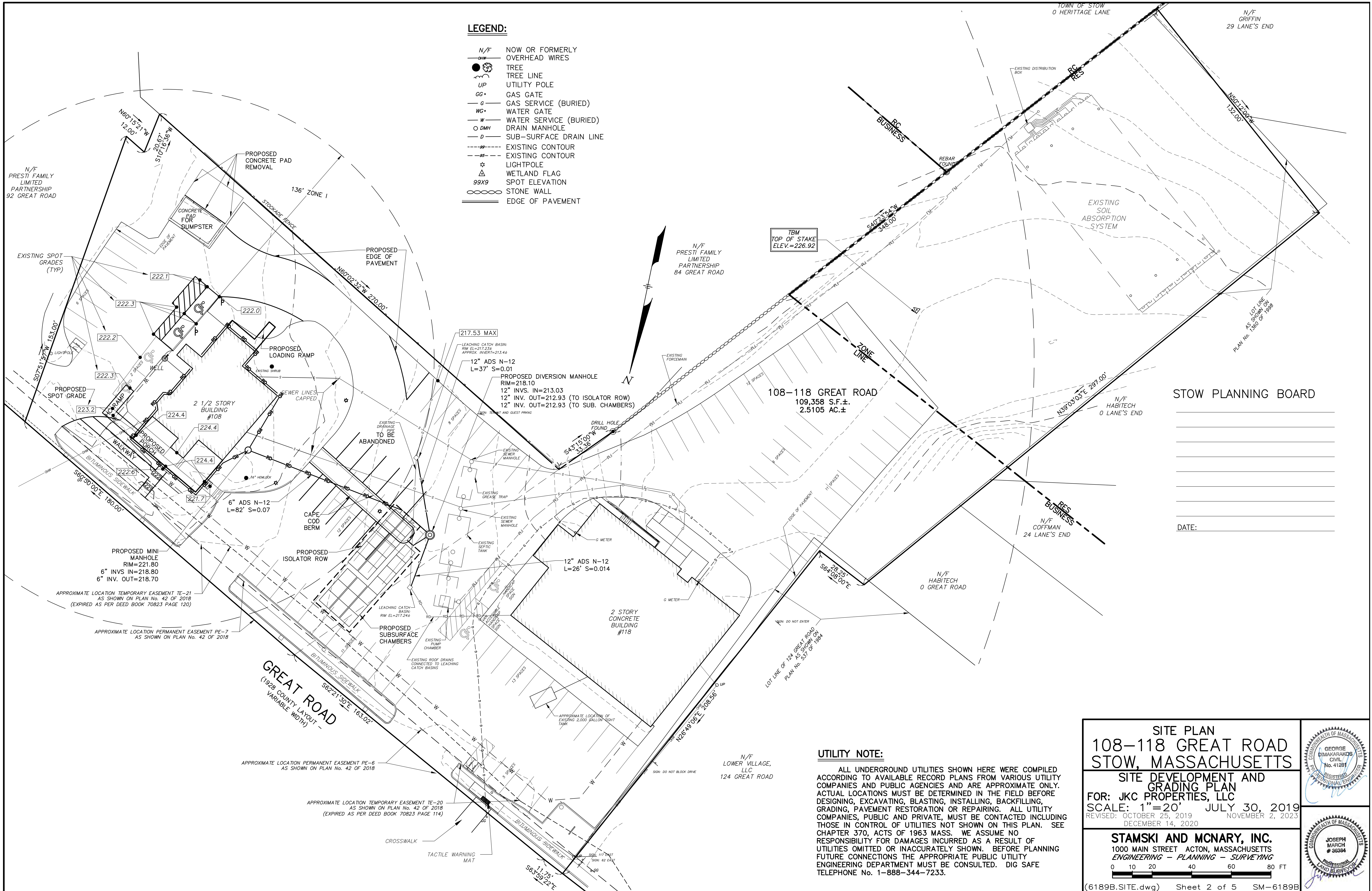
STAMSKI AND MCNARY, INC.  
1000 MAIN STREET  
ACTON, MA 01720

### ZONING DISTRICT

BUSINESS  
RESIDENTIAL

# LEGEND:

- N/F NOW OR FORMERLY
- OHW OVERHEAD WIRES
- TREE TREE
- LINE TREE LINE
- UP UTILITY POLE
- GG GAS GATE
- G GAS SERVICE (BURIED)
- WG WATER GATE
- W WATER SERVICE (BURIED)
- DMH DRAIN MANHOLE
- D SUB-SURFACE DRAIN LINE
- EXISTING CONTOUR
- EXISTING CONTOUR
- LIGHTPOLE
- WETLAND FLAG
- SPOT ELEVATION
- STONE WALL
- EDGE OF PAVEMENT



STOW PLANNING BOARD

DATE:





