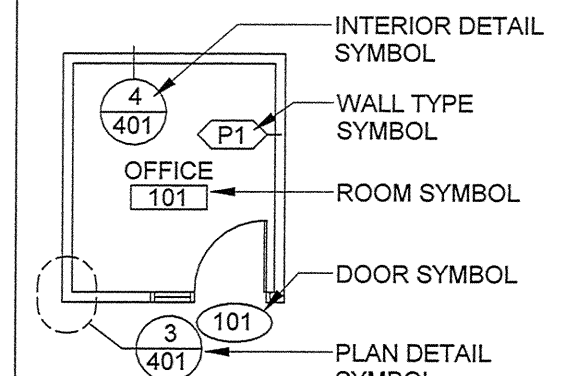


1 FIRST FLOOR PLAN
1/16" = 1'-0"

Notes:

ARCHITECTURAL FLOOR PLAN
REFERENCE SYS.



PARTITION LEGEND

EXISTING WALL, VERIFY CONSTRUCTION IN FIELD
CMU WALL
NEW INTERIOR PARTITION
NEW LOW WALL INTERIOR PARTITION

PARTITION NOTES

1. ALL WALLS NOT KEYED IN BY WALL TYPE
DESIGNATION TO BE PARTITION "P28", TYP

DIMENSIONING NOTES

1. EXTERIOR MASONRY WALLS ARE
DIMENSIONED TO THE FACE OF MASONRY
2. INTERIOR MASONRY WALLS ARE
DIMENSIONED TO THE FACE OF MASONRY
3. WOOD FRAMED EXTERIOR WALLS ARE
DIMENSIONED TO THE EXTERIOR FACE OF
STUD
4. INTERIOR PARTITIONS ARE
DIMENSIONED TO THE CENTERLINE, UON
5. REPAIR EXISTING WALLS AS REQUIRED
WHERE WALLS WERE REMOVED

FIRE EXTINGUISHER SCHEDULE

FE-1	SURFACE MOUNT FIRE EXTINGUISHER, J.L. INDUSTRIES COSMIC 5X, PLASTIC SIGN #24S BY J.L. INDUSTRIES TO BE MOUNTED ABOVE EXTINGUISHER
FE-2	RECESSED FIRE EXTINGUISHER - 1-1/2" TRIM, J.L. INDUSTRIES COSMIC 5X, CABINET #1826G17, MILL FINISH, REFER TO DETAIL A.622, PLASTIC SIGN #24S BY J.L. INDUSTRIES TO BE MOUNTED ABOVE CABINET

Key Plan:

Architect's Stamp:



Project:

Collings Foundation

137 Barton House
Stow, MA 01773

Client:

JM Coull Inc.
20 Powder Mill Road
Maynard, MA 01754
(978) 461-0330

Project #:

13034

Scale:

As Noted

Issue:	Date:
Pricing	04.23.14

Revisions:	Date:

Drawing Title:

FIRST FLOOR PLAN

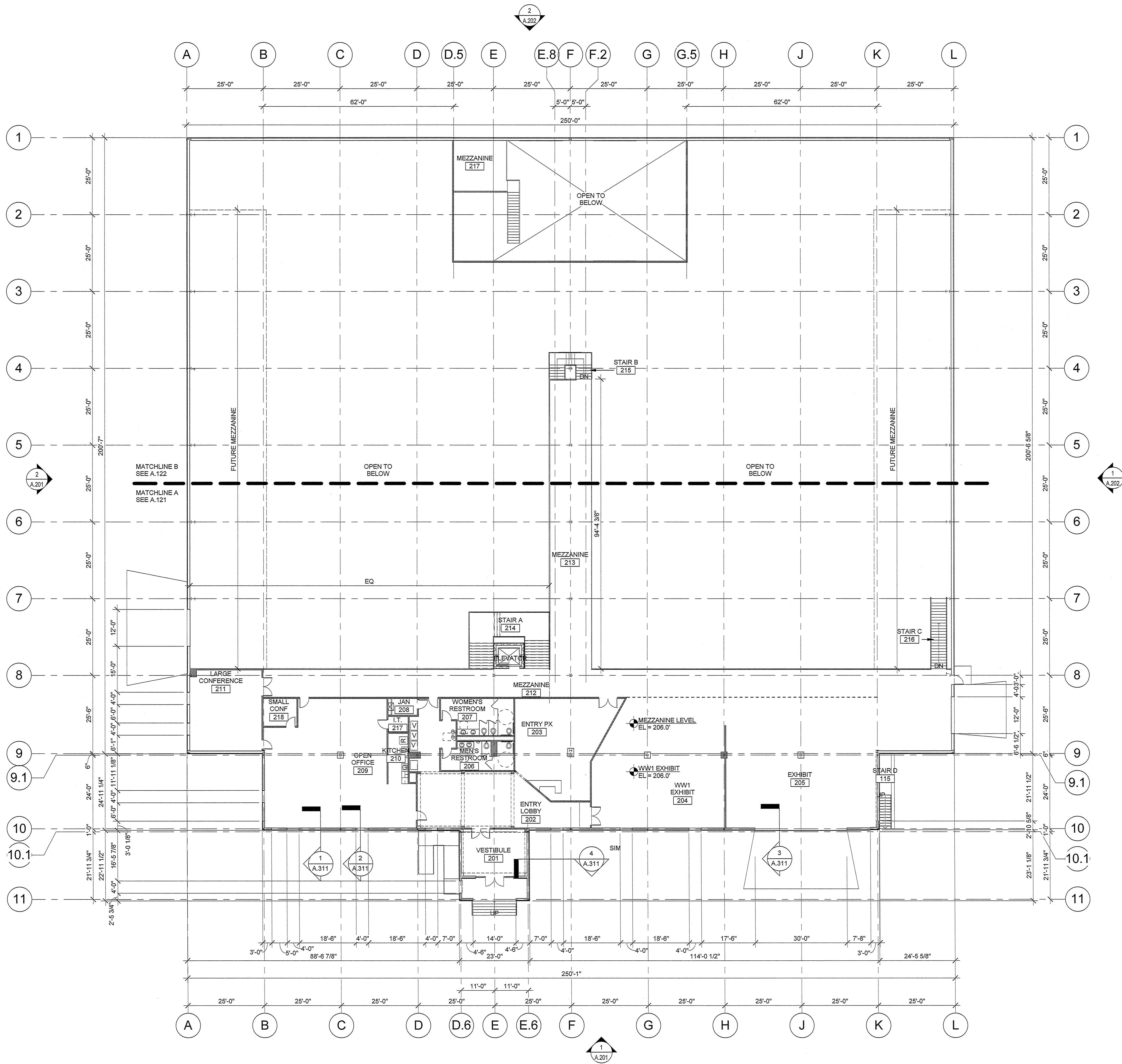
Sheet Number:

A.101



20 Chelmsford Street, Chelmsford, Ma. 01824
Tel: (978) 244-1100 Fax: (978) 244-1191
www.ahparchitects.com

THESE DOCUMENTS AND ALL DESIGN, MANAGEMENT, DESIGN AND PLANNING
CONTRACT DOCUMENTS ARE THE PROPERTY OF AHP ARCHITECTS. NO PART OF THESE
DOCUMENTS MAY BE REPRODUCED OR TRANSMITTED IN ANY FORM OR BY ANY MEANS
WITHOUT THE WRITTEN PERMISSION OF AHP ARCHITECTS.



1 MEZZANINE PLAN
1/16" = 1'-0"

Notes:

ARCHITECTURAL FLOOR PLAN REFERENCE SYS.

INTERIOR DETAIL SYMBOL
WALL TYPE SYMBOL
ROOM SYMBOL
DOOR SYMBOL
PLAN DETAIL SYMBOL

PARTITION LEGEND

EXISTING WALL, VERIFY CONSTRUCTION IN FIELD
CMU WALL
NEW INTERIOR PARTITION
NEW LOW WALL INTERIOR PARTITION

PARTITION NOTES

1. ALL WALLS NOT KEYED IN BY WALL TYPE DESIGNATION TO BE PARTITION "P2B", TYP

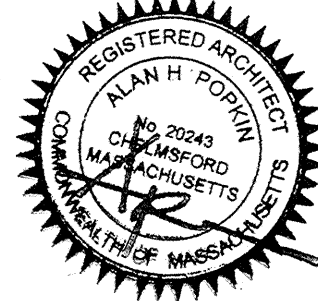
DIMENSIONING NOTES

1. EXTERIOR MASONRY WALLS ARE DIMENSIONED TO THE FACE OF MASONRY
2. INTERIOR MASONRY WALLS ARE DIMENSIONED TO THE FACE OF MASONRY
3. WOOD FRAMED EXTERIOR WALLS ARE DIMENSIONED TO THE EXTERIOR FACE OF STUD
4. INTERIOR PARTITIONS ARE DIMENSIONED TO THE CENTERLINE, UON
5. REPAIR EXISTING WALLS AS REQUIRED WHERE WALLS WERE REMOVED

FIRE EXTINGUISHER SCHEDULE	
FE-1	SURFACE MOUNT FIRE EXTINGUISHER, J.L. INDUSTRIES COSMIC EX, PLASTIC SIGN #245 BY J.L. INDUSTRIES TO BE MOUNTED ABOVE EXTINGUISHER
FE-2	RECESSED FIRE EXTINGUISHER - 1-1/2" TRIM, J.L. INDUSTRIES COSMIC EX, CABINET #1826G17, MILL FINISH, REFER TO DETAIL A-522 PLASTIC SIGN #245 BY J.L. INDUSTRIES TO BE MOUNTED ABOVE CABINET

Key Plan:

Architect's Stamp:



Project:

Collings Foundation
137 Barton Road
Stow, MA 01775

Client:
JM Coull Inc.
20 Powder Mill Road
Maynard, MA 01754
(978) 461-0330

Project #: 13034
Scale: As Noted

Issue: Date:
Pricing: 04.23.14

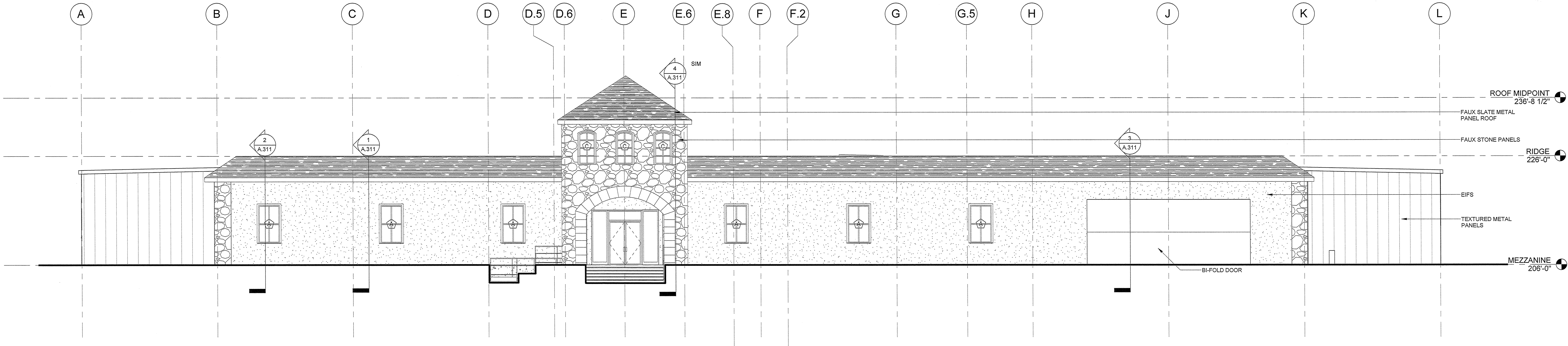
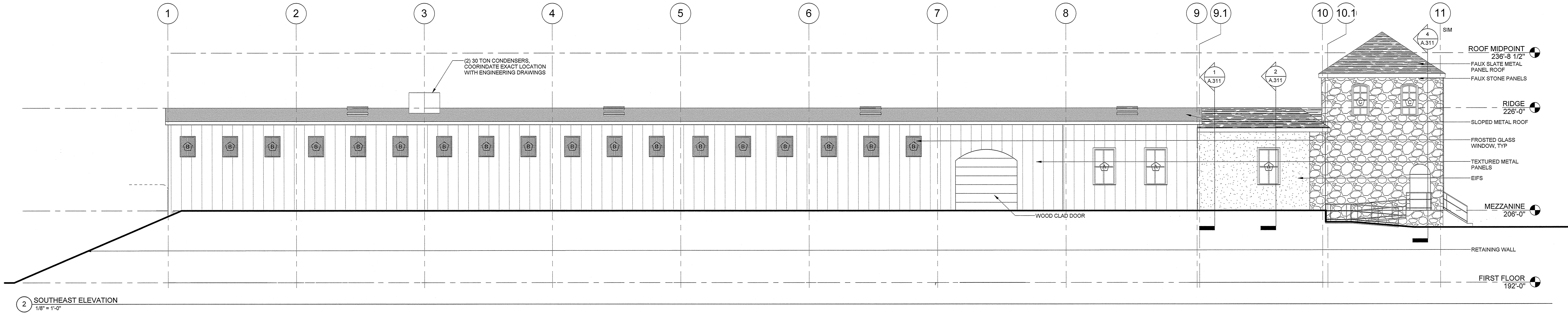
Revisions: Date:

Drawing Title:
MEZZANINE PLAN

Sheet Number:

A.102

ahp ARCHITECTS
CREATIVE THINKING
20 Chelmsford Street, Chelmsford, Ma. 01824
Tel: (978) 244.1100 Fax: (978) 244.1191
www.ahparchitects.com



Notes:

EXTERIOR WINDOW FRAMING & GLAZING

GENERAL WINDOW NOTES:
1. ALL DIMENSIONS SHOWN ON ARCHITECTURAL DRAWINGS ARE ROUGH OPENINGS. SHOP DRAWINGS SHOULD REFLECT APPROPRIATE FRAME SIZES INCLUDING JOINT SIZES PER MANUFACTURERS SPECIFICATIONS.
2. G.C. SUB-CONTRACTOR TO FIELD VERIFY ALL OPENINGS PRIOR TO FABRICATION OF WINDOWS.
3. SUBMIT COLOR SAMPLES FOR FRAMES AND GLAZING AS PART OF THE SHOP DRAWING PROCESS.

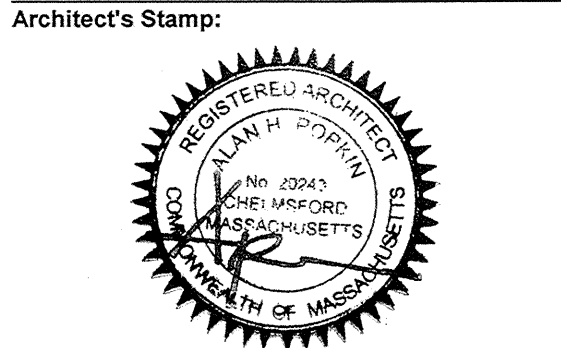
STOREFRONT SYSTEM:
1. KAWNEER 451T - FRONT GLAZED
2. FRAME COLOR - CLEAR ANODIZED ALUMINUM

CURTAINWALL SYSTEM:
1. KAWNEER 1600 SYSTEM - 7-1/2" FRAME DEPTH
2. STEEL REINFORCING TO BY FABRICATOR DURING SHOP DRAWINGS AS REQUIRED TO MEET MANUFACTURE SPECIFICATIONS AND WIND LOAD REQUIREMENTS.
3. FRAME COLOR - CLEAR ANODIZED ALUMINUM

STOREFRONT & CURTAINWALL ENTRANCES:
1. DOORS: KAWNEER 350 MEDIUM STILE

GLAZING:
1. ALL GLAZING TO BE LOW E II
2. PROVIDE TEMPERED GLAZING IN ALL AREA REQUIRED BY CODE.
3. GLAZING COLORS:
G1: 1" INSULATED CLEAR ECLIPSE ADVANTAGE (LOW E)
-1/4" CLEAR ECLIPSE ADVANTAGE (LOW E SURFACE #2)
-1/2" AIR SPACE
-1/4" CLEAR ANNEALED
G2: 1" INSULATED CLEAR ECLIPSE ADVANTAGE (LOW E) SPANDREL
-1/4" CLEAR ECLIPSE ADVANTAGE (LOW E SURFACE #2)
-1/2" AIR SPACE
-1/4" CLEAR ANNEALED (SPANDREL COATING SURFACE #4)

Key Plan:



Project:

Collings Foundation
137 Barton Road
Stow, MA 01775

Client:
JM Coull Inc.
20 Powder Mill Road
Maynard, MA 01754
(978) 451-0330

Project #: 13034
Scale: As Noted

Issue: Date:
Pricing 04.23.14

Revisions:	Date:

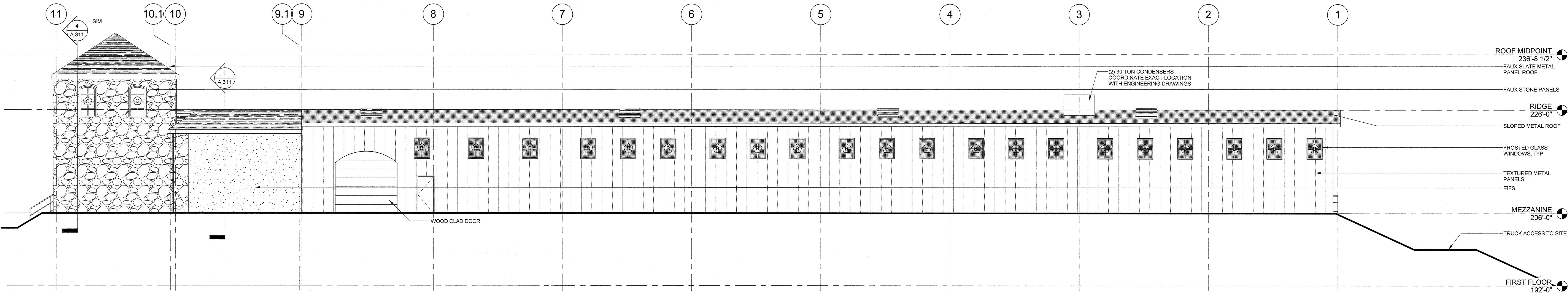
Drawing Title:
EXTERIOR ELEVATIONS

Sheet Number:

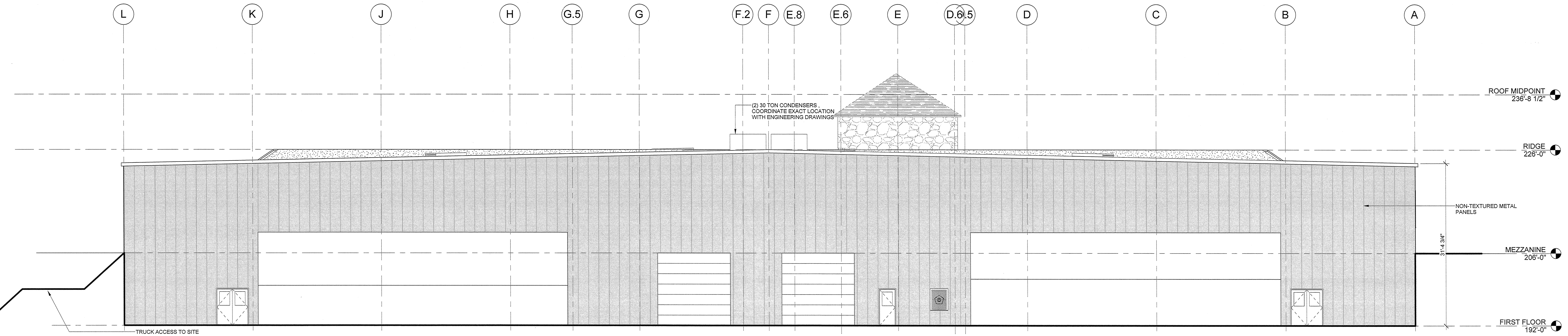
A.201

ahp | ARCHITECTS
CREATIVE THINKING
20 Chelmsford Street, Chelmsford, Ma. 01824
Tel: (978) 244-1100 Fax: (978) 244-1191
www.ahparchitects.com

THESE DOCUMENTS AND ALL OTHER ARRANGEMENTS, ORDERS AND PLANS
INCORPORATED HEREIN OR OTHERWISE REFERRED TO HEREIN ARE HEREBY
DECLARED TO BE THE PROPERTY OF AHP ARCHITECTS AND ARE NOT TO BE
REPRODUCED OR COPIED IN ANY MANNER WITHOUT WRITTEN PERMISSION
© 2015 AHP ARCHITECTS



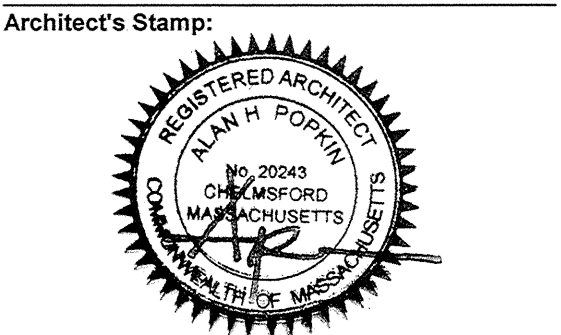
1 NORTHWEST ELEVATION
1/8" = 1'-0"



2 SOUTHWEST ELEVATION
1/8" = 1'-0"

- Notes:**
- EXTERIOR WINDOW FRAMING & GLAZING**
- GENERAL WINDOW NOTES:
1. ALL DIMENSIONS SHOWN ON ARCHITECTURAL DRAWINGS ARE ROUGH OPENINGS. SHOP DRAWINGS SHOULD REFLECT APPROPRIATE FRAME SIZES INCLUDING JOINT SIZES PER MANUFACTURERS SPECIFICATIONS.
2. G.C./SUB-CONTRACTOR TO FIELD VERIFY ALL OPENINGS PRIOR TO FABRICATION OF WINDOWS.
3. SUBMIT COLOR SAMPLES FOR FRAMES AND GLAZING AS PART OF THE SHOP DRAWING PROCESS.
- STOREFRONT SYSTEM:**
1. KAWNEER 461T - FRONT GLAZED
2. FRAME COLOR - CLEAR ANODIZED ALUMINUM
- CURTAINWALL SYSTEM:**
1. KAWNEER 1600 SYSTEM - 7-1/2" FRAME DEPTH
2. STEEL REINFORCING TO BE BY FABRICATOR DURING SHOP DRAWINGS AS REQUIRED TO MEET MANUFACTURE SPECIFICATIONS AND WIND LOAD REQUIREMENTS
3. FRAME COLOR - CLEAR ANODIZED ALUMINUM.
- STOREFRONT & CURTAINWALL ENTRANCES:**
1. DOORS: KAWNEER 350 MEDIUM STYLE
- GLAZING:**
1. ALL GLAZING TO BE LOW E-III
2. PROVIDE TEMPERED GLAZING IN ALL AREA REQUIRED BY CODE
3. GLAZING COLORS:
G1: 1" INSULATED CLEAR ECLIPSE ADVANTAGE (LOW E)
-1/4" CLEAR ECLIPSE ADVANTAGE (LOW E SURFACE #2)
-1/2" AIR SPACE
-1/4" CLEAR ANNEALED
G2: 1" INSULATED CLEAR ECLIPSE ADVANTAGE (LOW E) SPANDREL
-1/4" CLEAR ECLIPSE ADVANTAGE (LOW E SURFACE #2)
-1/2" AIR SPACE
-1/4" CLEAR ANNEALED (SPANDREL COATING SURFACE #4)

Key Plan:



Project:

Collings Foundation
137 Barton Road
Stow, MA 01773

Client:
JM Coll Inc.
20 Powder Mill Road
Maynard, MA 01754
(978) 461-0330

Project #: 13034
Scale: As Noted

Issue:	Date:
Pricing:	04.23.14

Revisions:	Date:

Drawing Title:
EXTERIOR ELEVATIONS

Sheet Number:

A.202

ahp ARCHITECTS
CREATIVE THINKING
20 Chelmsford Street, Chelmsford, Ma. 01824
Tel: (978) 244.1100 Fax: (978) 244.1191
www.ahparchitects.com

THIS DOCUMENT AND ALL DATA, REPRESENTS, DESIGN AND PLAN
INCORPORATES THE DESIGN AND REPRESENTS THE DESIGN AND PLAN
CREATED BY AHP ARCHITECTS. PLEASE CONSULT WITH AHP ARCHITECTS
© 2014 AHP ARCHITECTS