



Case Studies

- West Acton Village Center
- Manchester-by-the-Sea
- Niantic, CT
- Clinton, CT
- Wayland Town Center
- South Kingston

West Acton Village Center

- Architecture
 - Design, scale, and massing of building
- Courtyard
- Sidewalks
- Outdoor Dining



West Acton Village Center

- Parking behind the building
 - Including covered parking with solar panels
- Outdoor gathering spaces
- Pedestrian friendly



West Acton Village Center

- Landscaping
- Strong mix of uses
- Outdoor gathering spaces



Summer Street, Manchester-by-the-Sea

- Architecture
- Outdoor Dining
- Mixed Use Building
- Parking behind and to the side of the building
- Sidewalks



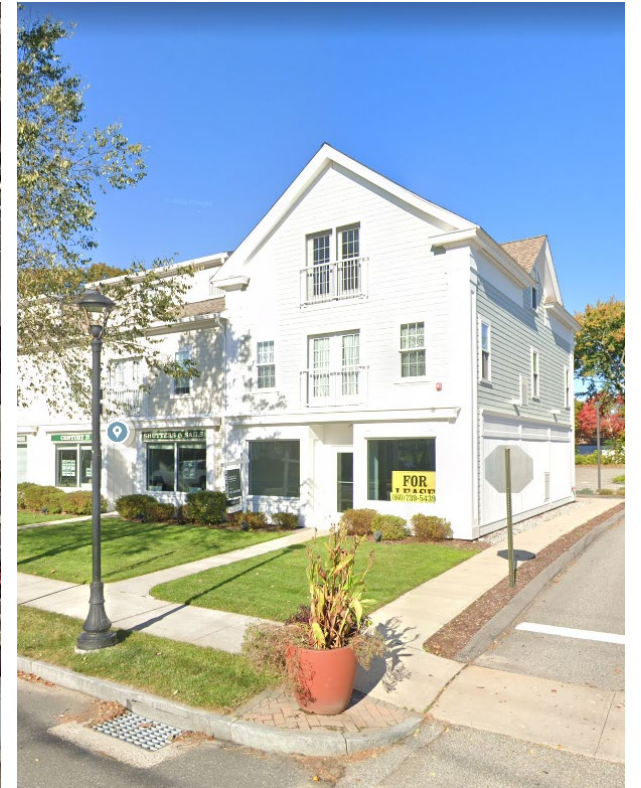
Summer Street, Manchester-by-the-Sea

- Single access point from main street
- Internal Streetscape
- Decentralized parking



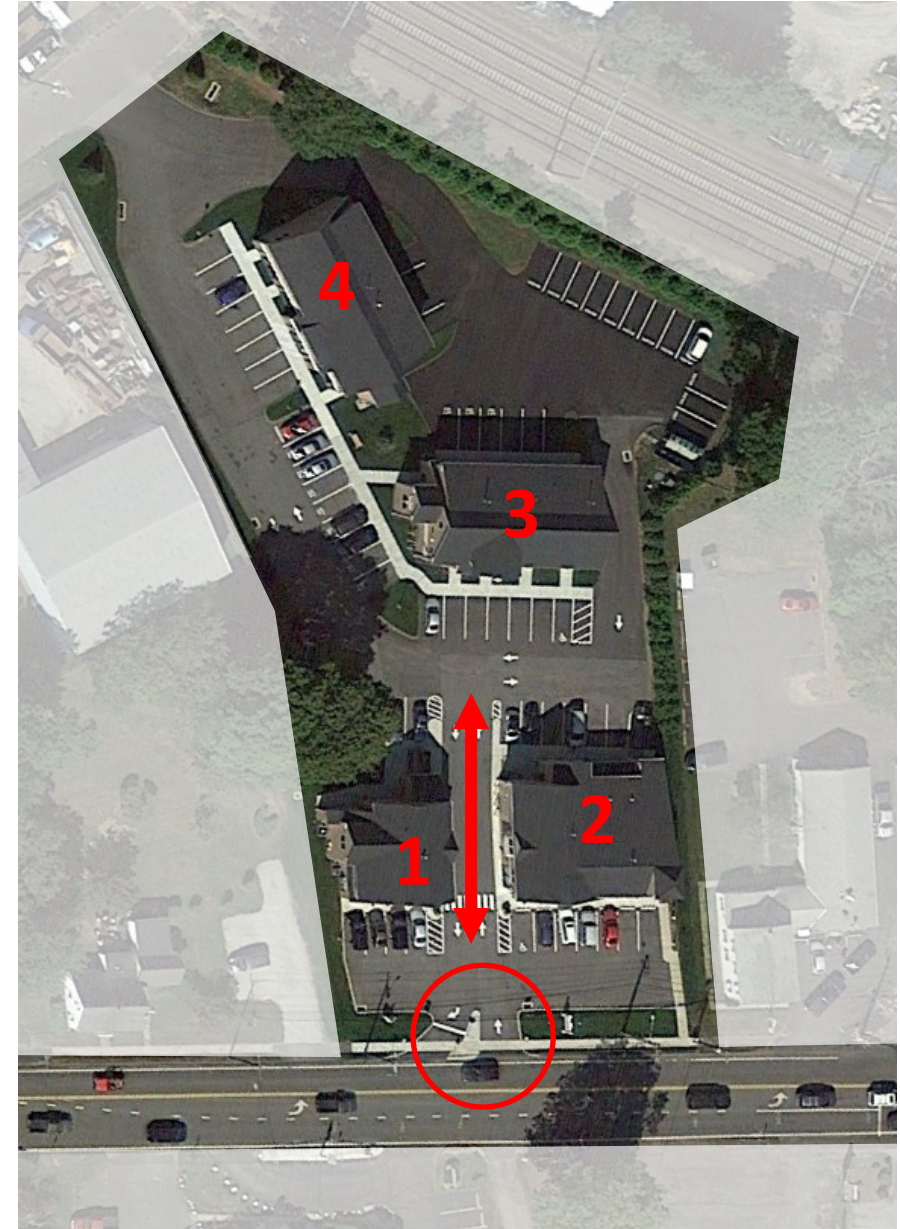
Bayside Building, Niantic, CT.

- Storefronts accessible to pedestrians via sidewalks
- Mixed-Use Building
- Landscaping
- Parking behind the building
- Architecture



67 West Main Street – Clinton, CT

- Decentralized parking lots
- Multiple buildings on one site
- Sidewalks throughout site
- Single vehicular entrance from main street
- Architecture



Wayland Town Center

- Architecture
- Outdoor dining
- Interior Streetscape
- Sidewalks
- Signage



Wayland Town Center

- Open Space for Community Gathering



South County Commons, South Kingstown, RI

- Architecture
- Pedestrian Friendly
- Open Space for Gathering
- Interior Streetscapes
- Strong Mix of Uses

