



# Case Studies

---

- West Acton Village Center
- Manchester-by-the-Sea
- Niantic, CT
- Clinton, CT
- Wayland Town Center
- South Kingston

# West Acton Village Center

- Architecture
  - Design, scale, and massing of building
- Courtyard
- Sidewalks
- Outdoor Dining



# West Acton Village Center

- Parking behind the building
  - Including covered parking with solar panels
- Outdoor gathering spaces
- Pedestrian friendly



# West Acton Village Center

- Landscaping
- Strong mix of uses
- Outdoor gathering spaces



# Summer Street, Manchester-by-the-Sea

- Architecture
- Outdoor Dining
- Mixed Use Building
- Parking behind and to the side of the building
- Sidewalks



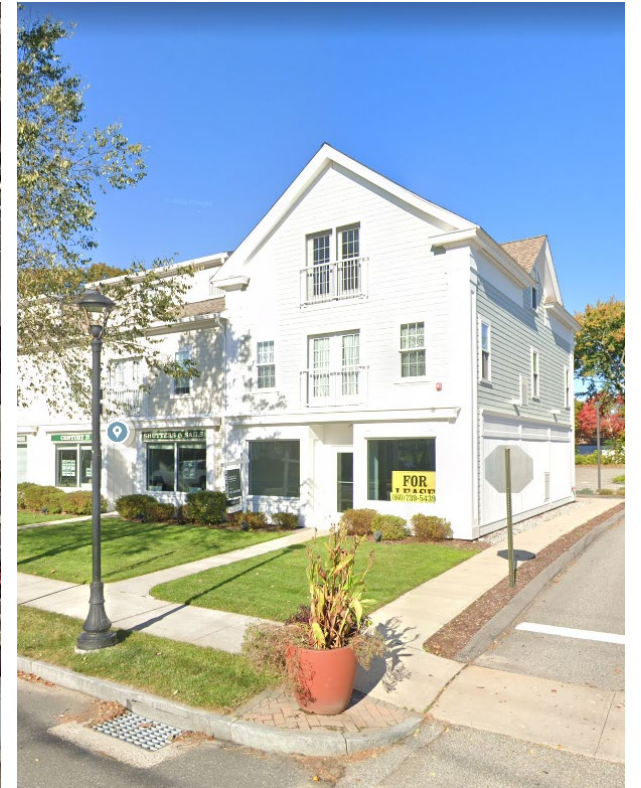
# Summer Street, Manchester-by-the-Sea

- Single access point from main street
- Internal Streetscape
- Decentralized parking



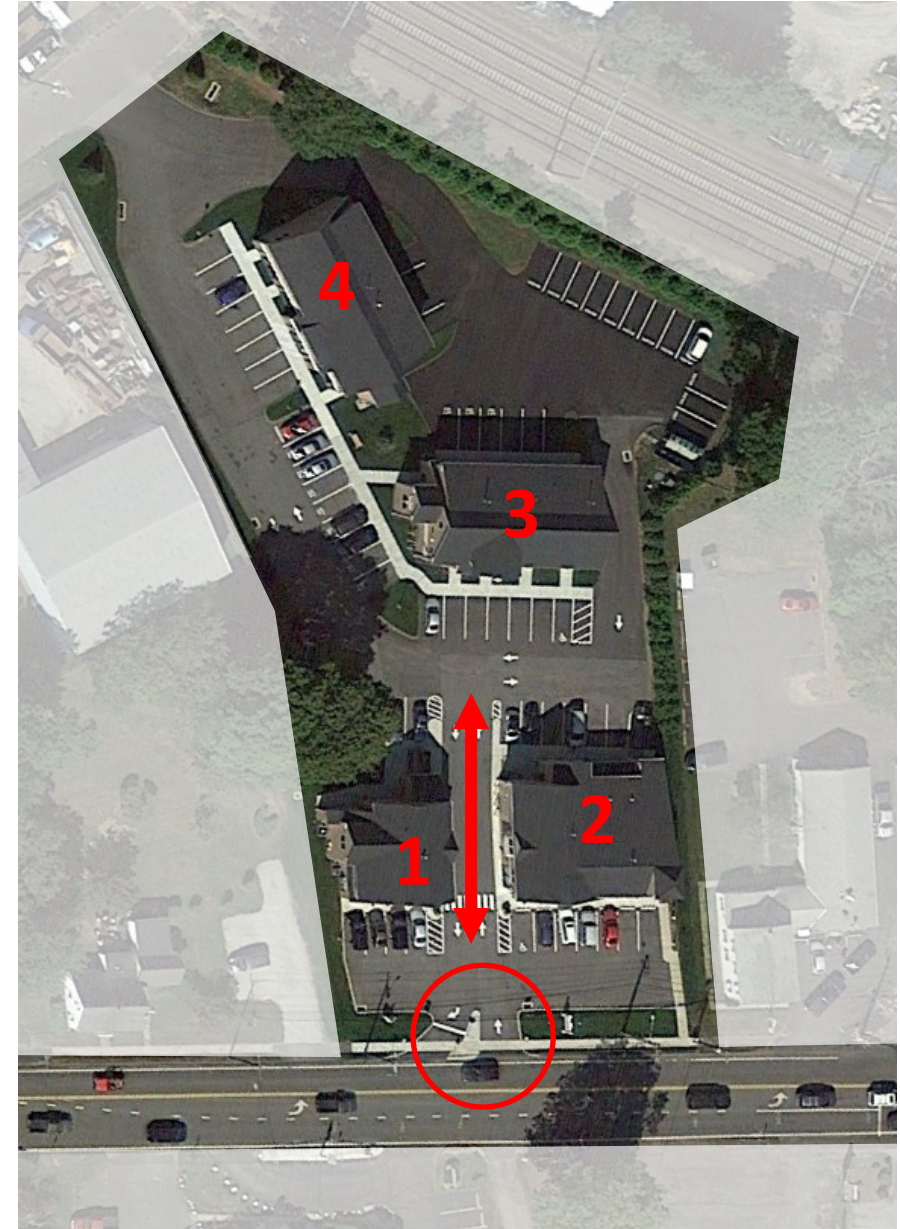
# Bayside Building, Niantic, CT.

- Storefronts accessible to pedestrians via sidewalks
- Mixed-Use Building
- Landscaping
- Parking behind the building
- Architecture



## 67 West Main Street – Clinton, CT

- Decentralized parking lots
- Multiple buildings on one site
- Sidewalks throughout site
- Single vehicular entrance from main street
- Architecture



# South County Commons, South Kingstown, RI

- Architecture
- Pedestrian Friendly
- Open Space for Gathering
- Interior Streetscapes
- Strong Mix of Uses



# Wayland Town Center

- Architecture
- Outdoor dining
- Interior Streetscape
- Sidewalks
- Signage



# Wayland Town Center

- Open Space for Community Gathering

