

RANDALL LIBRARY PRELIMINARY DESIGN SERVICES

STOW, MA

Workshop B
9/22/2021

designLAB architects

G2 G2 COLLABORATIVE
LANDSCAPE ARCHITECTURE

AGENDA

- Schedule and Process [5 Mins]
- Community Outreach Update [10 Mins]
- Review Preliminary Concept Design Strategies [30 Mins]
- Review Preliminary Landscape Opportunities [20 Mins]
- Next Steps [10 Mins]

Schedule

Randall Library
Preliminary Workplan

design LAB architects

2021

aug

sept

oct

nov

dec

jan

7/5

7/12

7/19

7/26

8/2

8/9

8/16

8/23

8/30

9/6

9/13

9/20

9/27

10/4

10/11

10/18

10/25

11/1

11/8

11/15

11/22

11/29

12/6

Notice to Proceed

Task 1: Background, Facilities Assessment & Survey

- Review and assess prior reports (1-2 weeks)
- Kick off
- Site Visit

Task 1A: Community Engagement

- Distribute Boards
- Feedback Period
- Collect Feedback

Task 2: Program Development (3 Weeks)

- Program Interviews
- Observation Visit
- Facilities + Maintenance Interview
- Strategy Interview
- Workshop A
- [Program + Assessment Findings]

Task 3: Concept Design (3 Months)

- Workshop B
- [initial concepts]
- Cost Estimate for Options
- Workshop C
- [refined concepts]
- Public Forum
- Workshop D
- [Final Concepts + Public Input Summary]
- Final Presentation to Town Officials

8/5: Kick-Off

8/18: Site Visit

9/13

10/4 or 10/11

Interviews: 8/19 + 8/20

9/7: Workshop A

9/22: Workshop B

Workshop C

Public Forum

Workshop D

Final Presentation to Town Officials



AGENDA

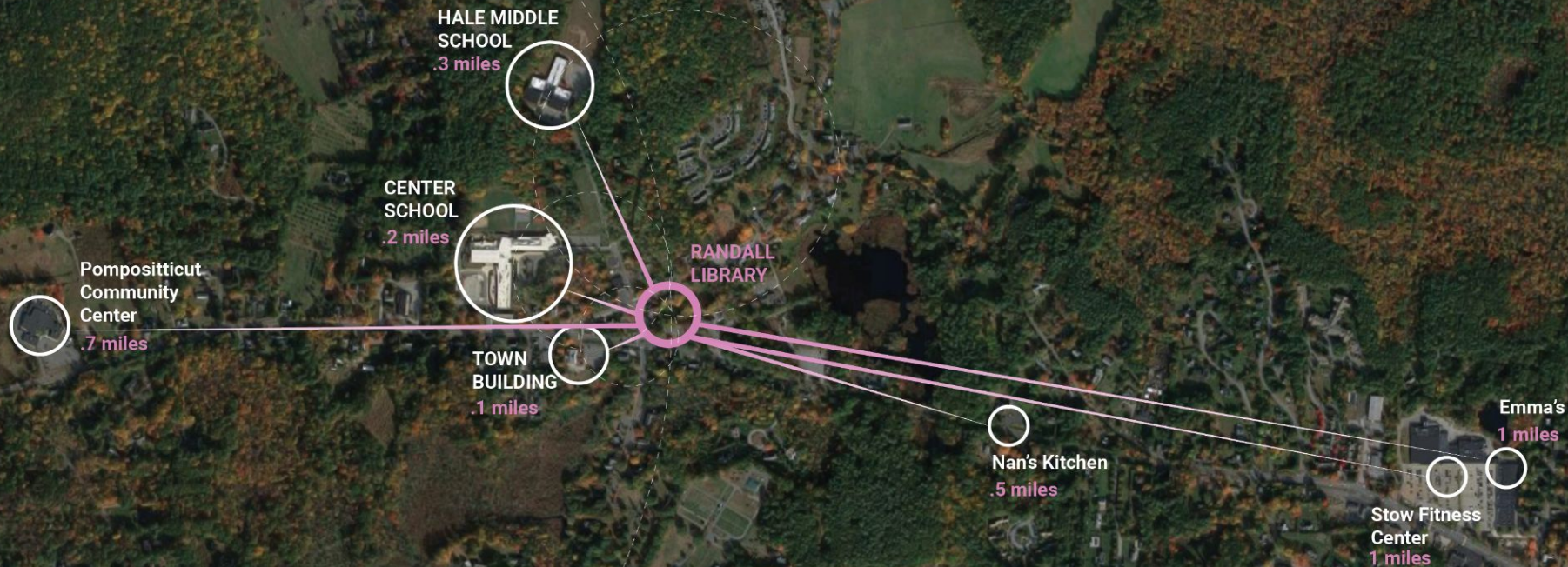
- **Schedule and Process [5 Mins]**
- Community Outreach Update [10 Mins]
- Review Preliminary Concept Design Strategies [30 Mins]
- Review Preliminary Landscape Opportunities [20 Mins]
- Next Steps [10 Mins]



AGENDA

- Schedule and Process [5 Mins]
- **Community Outreach Update [10 Mins]**
- Review Preliminary Concept Design Strategies [30 Mins]
- Review Preliminary Landscape Opportunities [20 Mins]
- Next Steps [10 Mins]

Community Outreach



Imagining the Future of Randall Library - We Want to Hear from You!

Fall 2021

VISION

Generally, what do you imagine the future of the Randall Library building looks like?

RESOURCES

What types of resources would you like to see in the Library that do not exist now?

PROGRAM

What types of library programs have you attended in the past? What types of library programs would you like to see offered?

Instructions:

As the The Library Building Committee considers strategies to re-imagine and renovate Randall Library, we want to hear from you! The Building Committee plans to consider this feedback as we develop potential renovation strategies over the next several months.

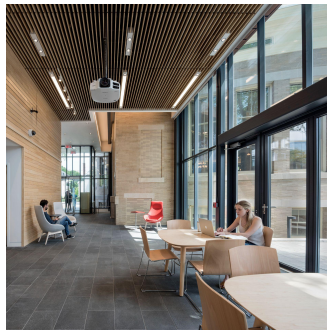
On this board, please:

1. Use post-it notes (as many as you'd like) to share your thoughts on the prompts above

Imagining the Future of Randall Library Building - We Want to Hear from You!

Fall 2021

GATHERING + EVENT



CHILDREN'S ROOM



QUIET READING



GROUP PROJECT ROOMS



OUTDOOR PROGRAM



COMMUNITY CLASSROOM



TEEN AREA



OTHER



Instructions:

As the The Library Building Committee considers strategies to re-imagine and renovate Randall Library, we want to hear from you! The Building Committee plans to consider this feedback as we develop potential renovation strategies over the next several months.

On this board, please:

1. Use (3) sticky dots to identify which types of spaces you'd like to see in a renovated Randall Library (you can put all (3) sticky dots on one space, or spread them out!)
2. Use the space to the right of each image to share why these spaces resonate with you on a post-it note.
3. Share thoughts on a post-it note on other types of spaces you'd like to see in a renovated Randall Library and why.



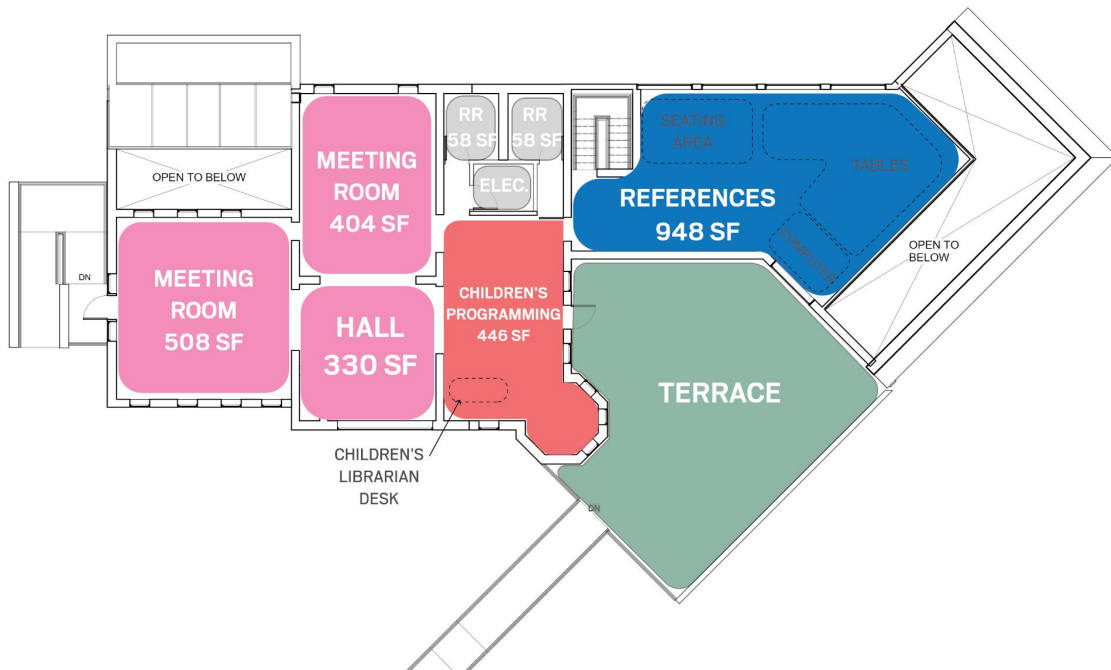
AGENDA

- Schedule and Process [5 Mins]
- Community Outreach Update [10 Mins]
- **Review Preliminary Concept Design Strategies [30 Mins]**
- Review Preliminary Landscape Opportunities [20 Mins]
- Next Steps [10 Mins]

First Floor Layout and Program



Second Floor Layout and Program



Proposed Use Analysis

LIBRARY SUPPORT SPACES

COLLECTION

READING

YOUNG ADULT

CHILDREN'S

TECHNOLOGY

MEETING SPACE

BUILDING SUPPORT

EXTERIOR

STOW RANDALL LIBRARY PROGRAM STATEMENT

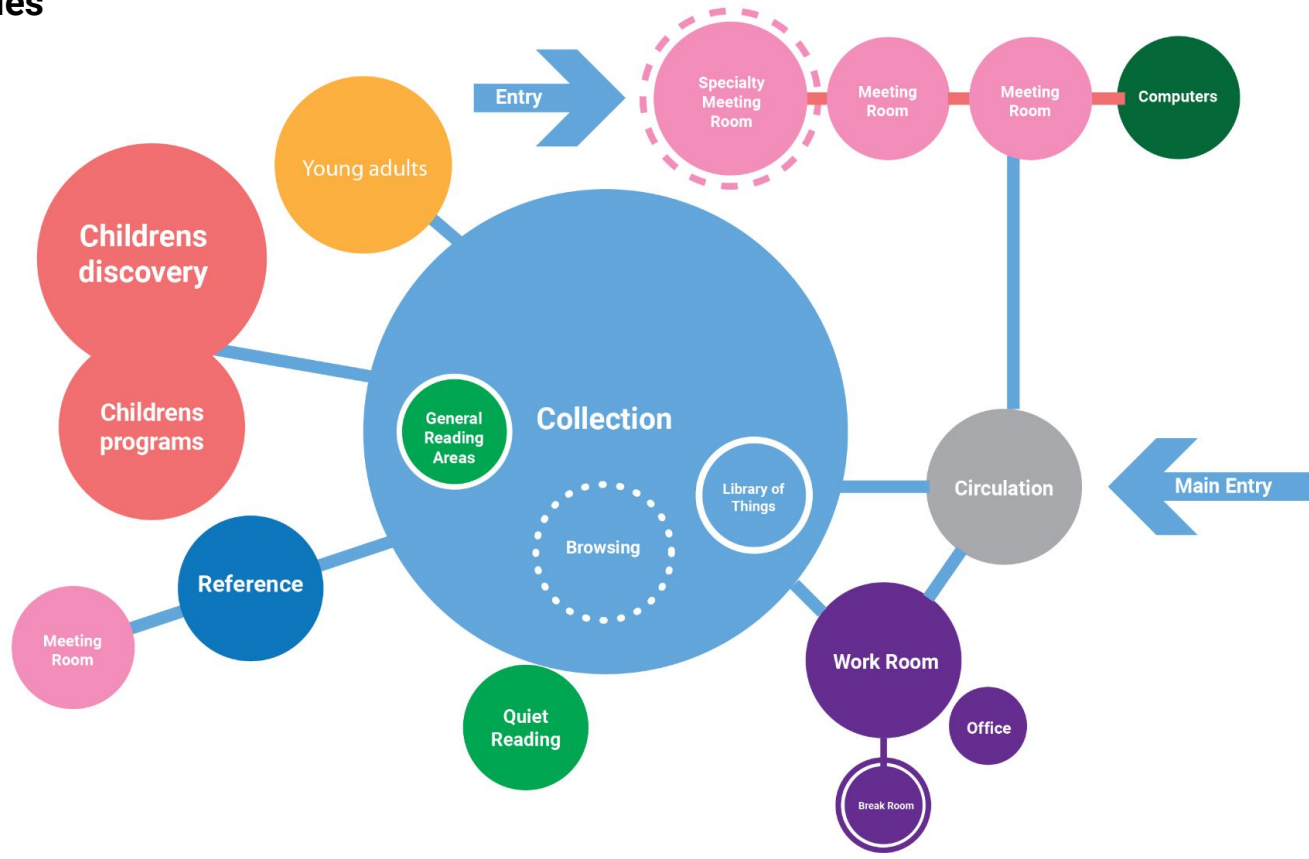
DESIGNLAB ARCHITECTS

09/16/2021

	Existing, Increase or New Program Space	Existing Net Assemblable Square Footage (NSF)	Proposed Gross Square Feet (GSF)	Notes
LIBRARY SUPPORT SPACES				
Circulation Desk	Increase	246 SF	+ TBD Increase	
Work Room	Increase	183 SF	+ TBD Increase	
Director's Office	Existing	93 SF	+ TBD Increase	
Break Room	New	n/a	TBD SF	
Processing Space	New	n/a	TBD SF	Potential to be within Work Room depending on Work Room location and layout.
Sub-TOTAL		524 SF	TBD SF	
COLLECTION				
General Collection	Increase	1397 SF	+ TBD Increase	
Library of Things	New	n/a	TBD SF	
Browsing Collection	Additional	n/a	TBD SF	
Reference	Existing	897 SF	897 SF	Potential to decrease
Sub-TOTAL		1397 SF	TBD SF	
READING				
General Reading	Increase	669 SF	+ TBD Increase	Potential to increase, further evaluation required. May be incorporated into Circulation SF
Quiet Reading	New	n/a	TBD SF	
Sub-TOTAL		669 SF	TBD SF	
YOUNG ADULT				
Collection	Increase	330 SF	+ TBD Increase	
Browsing	New	n/a	TBD SF	
Gathering	New	n/a	TBD SF	Potential to be multi-purpose with other Meeting Room / Gathering needs
Technology	New	n/a	TBD SF	Potential to be multi-purpose with other Technology needs
Sub-TOTAL		330 SF	TBD SF	
CHILDREN'S				
Collection	Increase	715 SF	+ TBD Increase	
Program Room	Increase	330 SF	+ TBD Increase	Potential to be multi-purpose with other Meeting Room
Support Space	New	n/a	TBD SF	
Sub-TOTAL		1045 SF	TBD SF	
TECHNOLOGY				
Computer Space	Increase	200 SF	+ TBD Increase	
Sub-TOTAL		200 SF	TBD SF	
MEETING SPACE				
Entry Hall/Meeting Room	Existing	180 SF	180 SF	
Meet. Meeting Room	Existing	321 SF	321 SF	
West Meeting Room	Existing	308 SF	308 SF	
Specialty Meeting Space	New	n/a	TBD Increase	
Sub-TOTAL		1009 SF	TBD SF	
BUILDING SUPPORT				
Restrooms	Increase	130 SF	+ 130 SF	
Mechanical	Increase	280 SF	+ TBD Increase	
Electrical Room	New	n/a	TBD SF	
Elevator	New	n/a	TBD SF	
Sub-TOTAL		410 SF	TBD SF	
LANDSCAPE				
Parking			TBD	
Accessible Entry			TBD	
Program Space			TBD	
TOTAL		5604 SF	TBD SF	

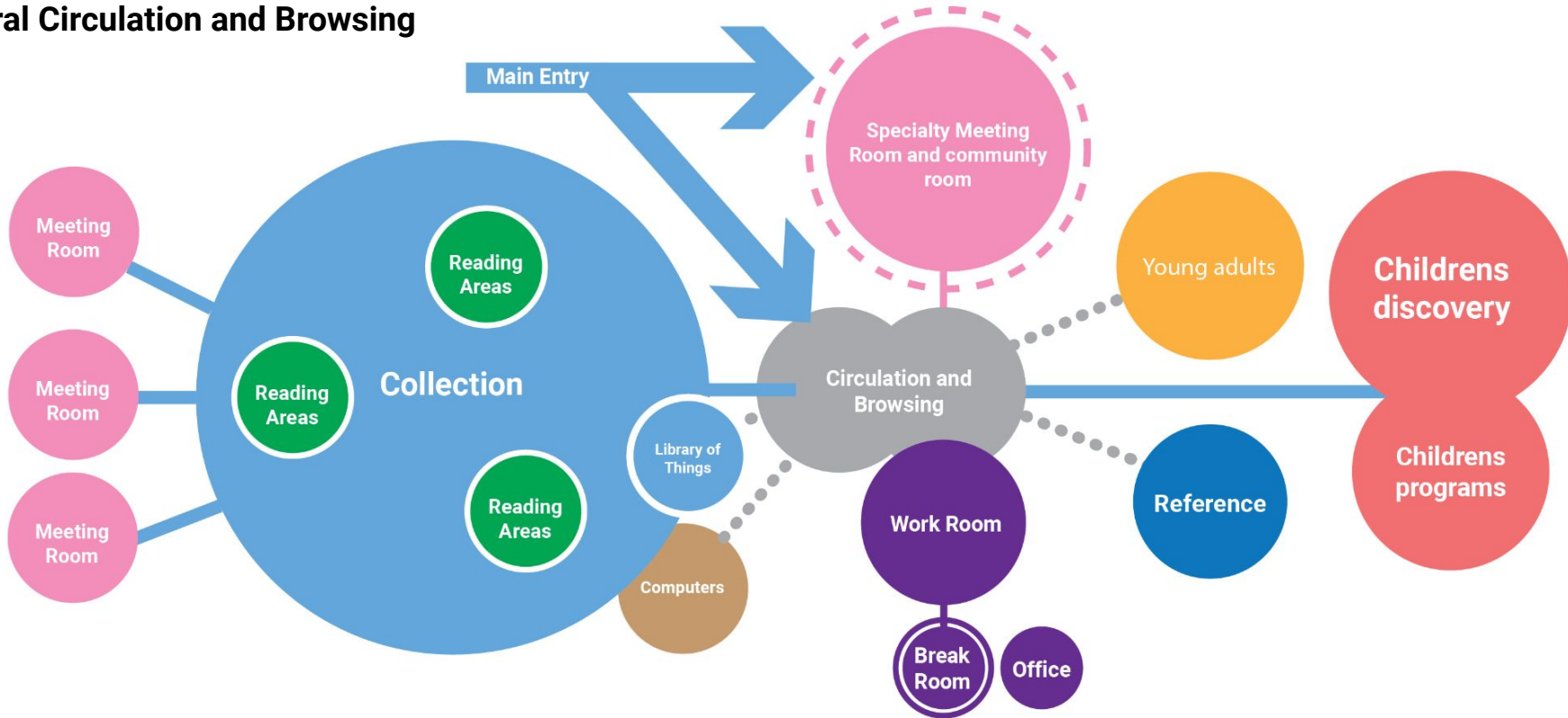


Improved Adjacencies

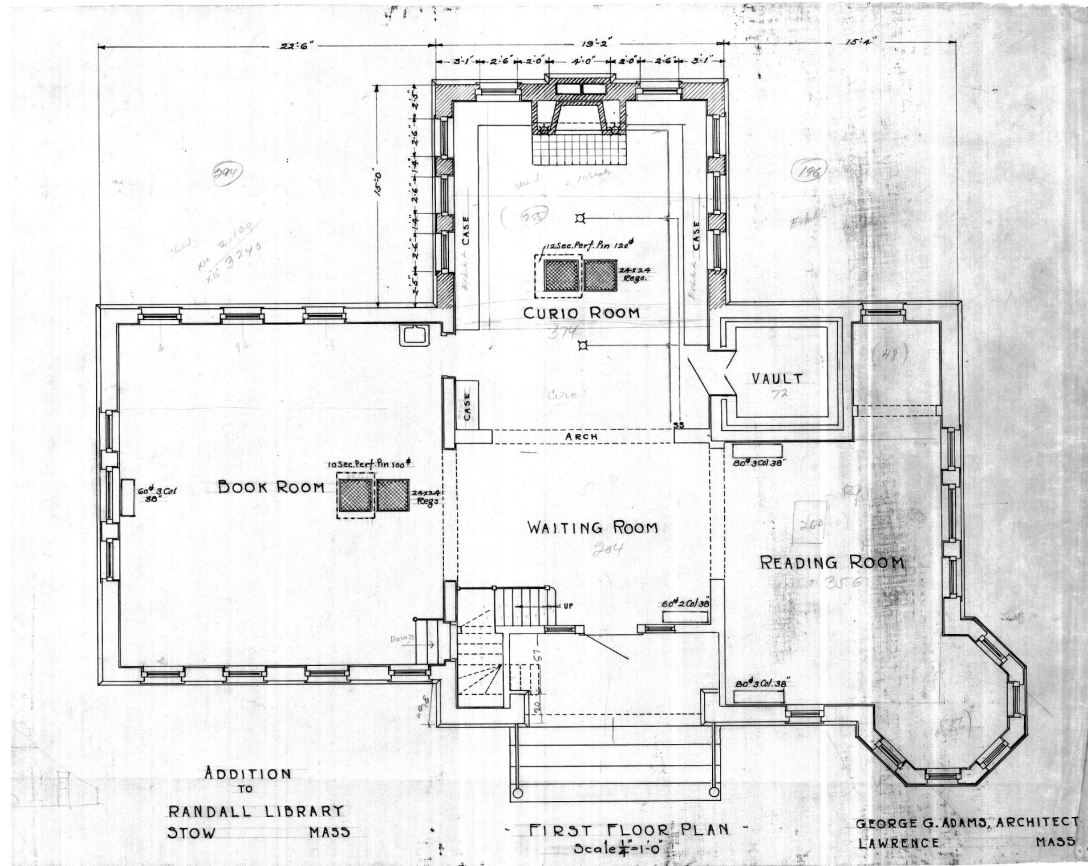




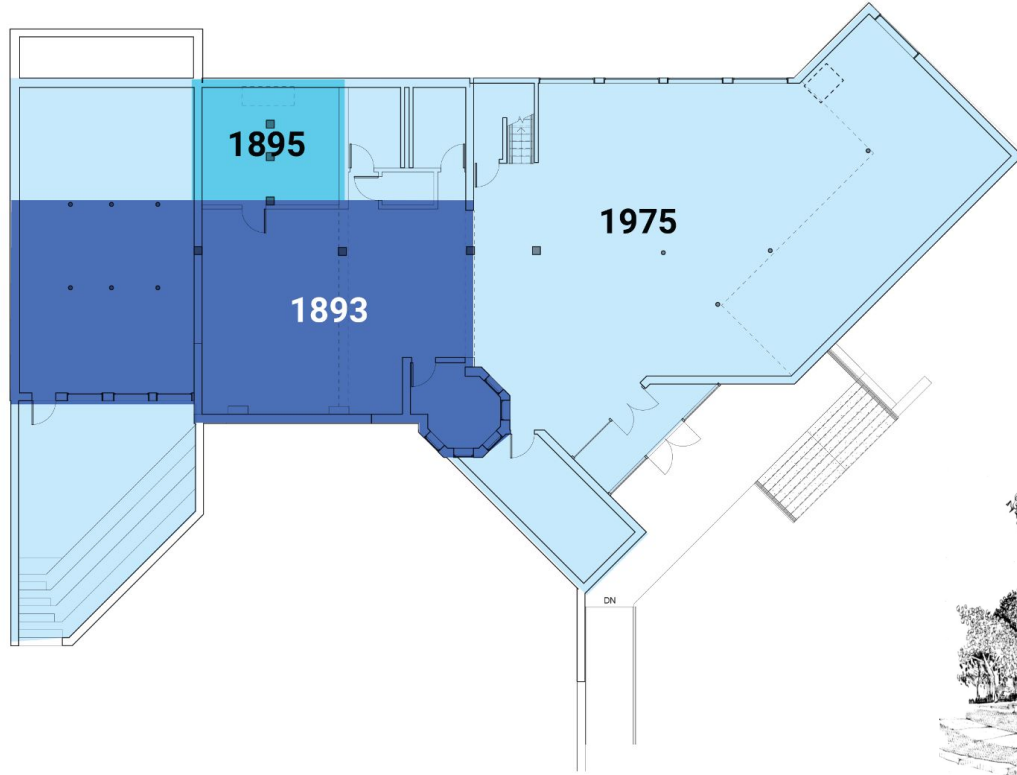
Central Circulation and Browsing



Historic Study/ Whitney Addition



Historic Study



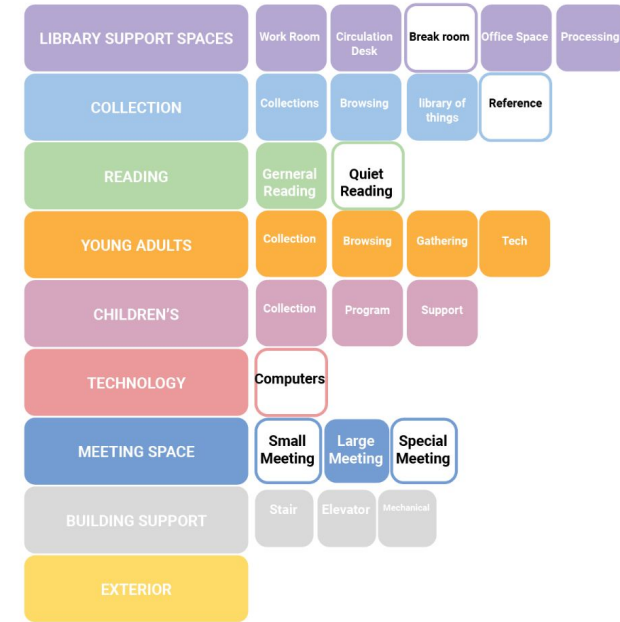
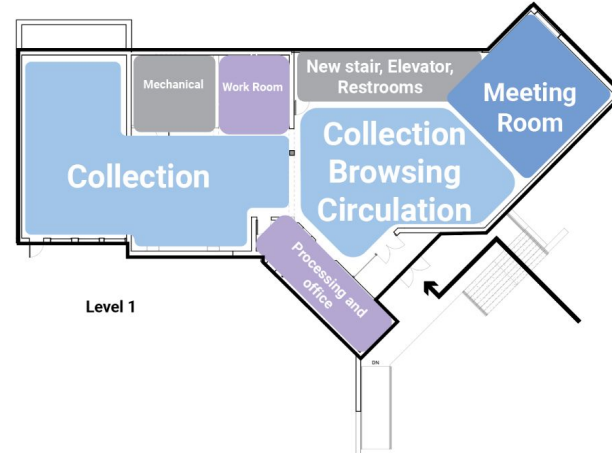
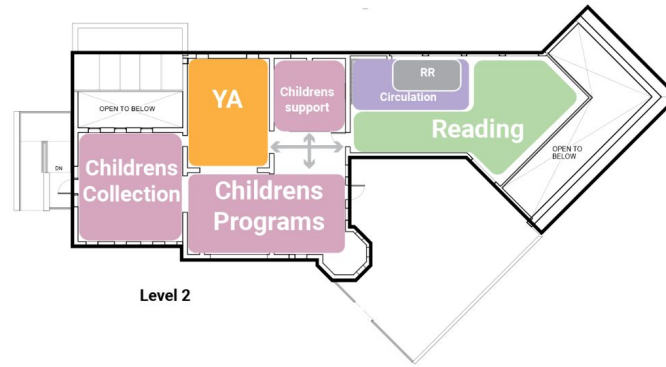
Guiding Principles

Guiding Principles

- Provide an **accessible** and **inclusive** library experience for all
- Create an **integrated architectural experience** between historic building and renovated 1970's addition and/or new addition
- Provide a **variety** of program spaces that best meet the needs of both **existing and new patrons**
- Address all building envelope, building system and maintenance issues
- Create a more **welcoming landscape** and entry experience

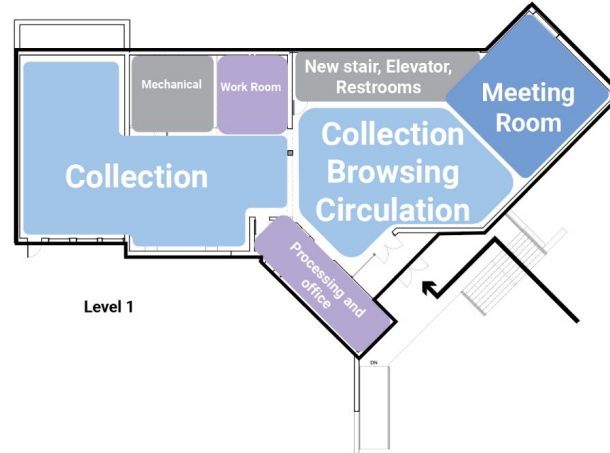
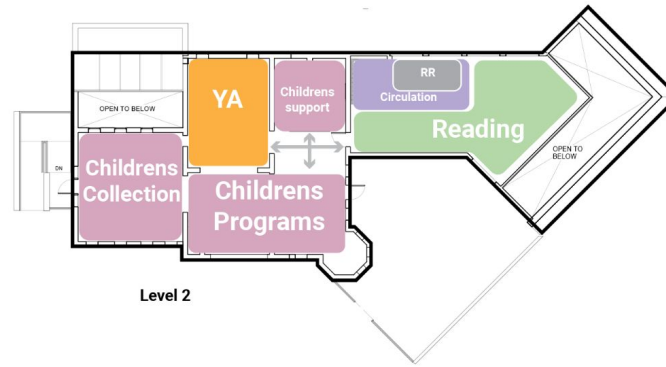
OPTION A: REUSE

- Maintain all of existing structure
- Children's & YA/Teens programs moved to historic space
- Collections on lower level
- Double height meeting room (add acoustic separation)
- New stair, elevator, & bathrooms



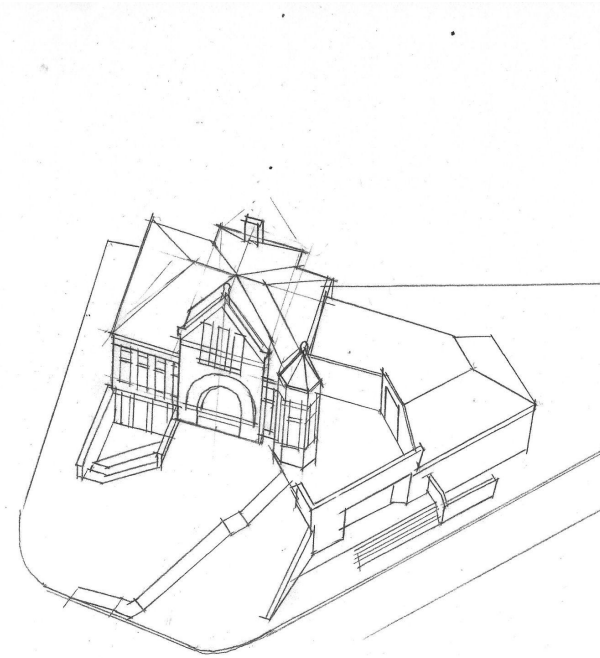
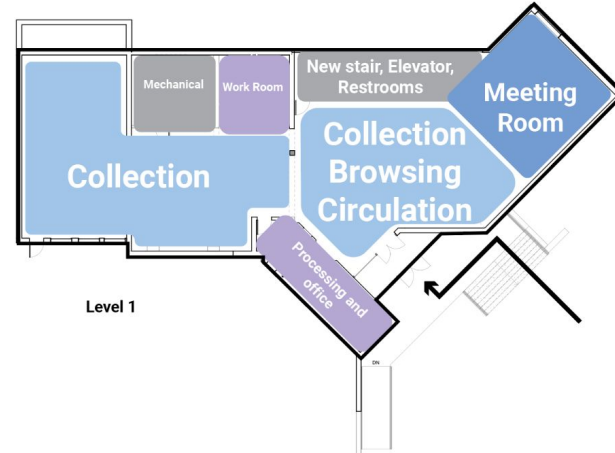
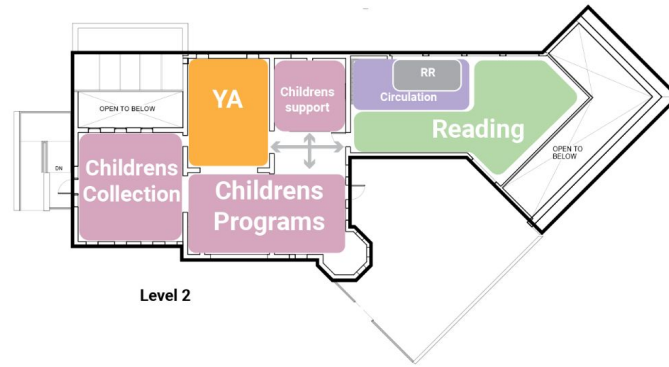
OPTION A: REUSE

- Maintain all of existing structure
- Children's & YA/Teens programs moved to historic space
- Collections on lower level
- Double height meeting room (add acoustic separation)
- New stair, elevator, & bathrooms



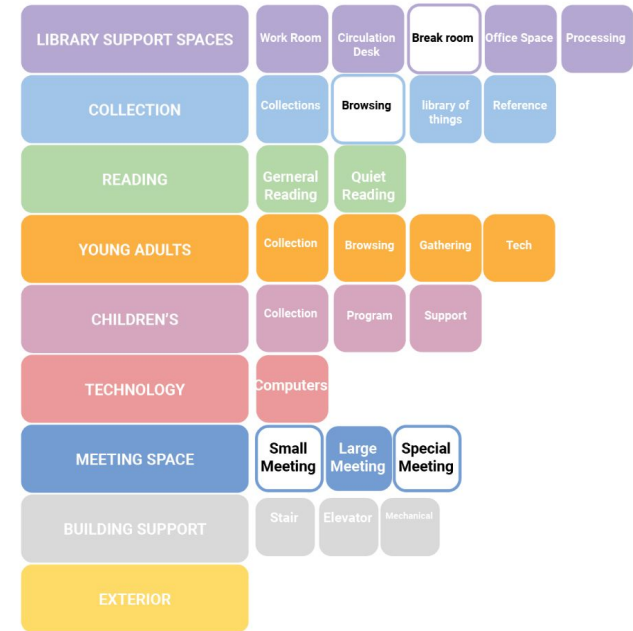
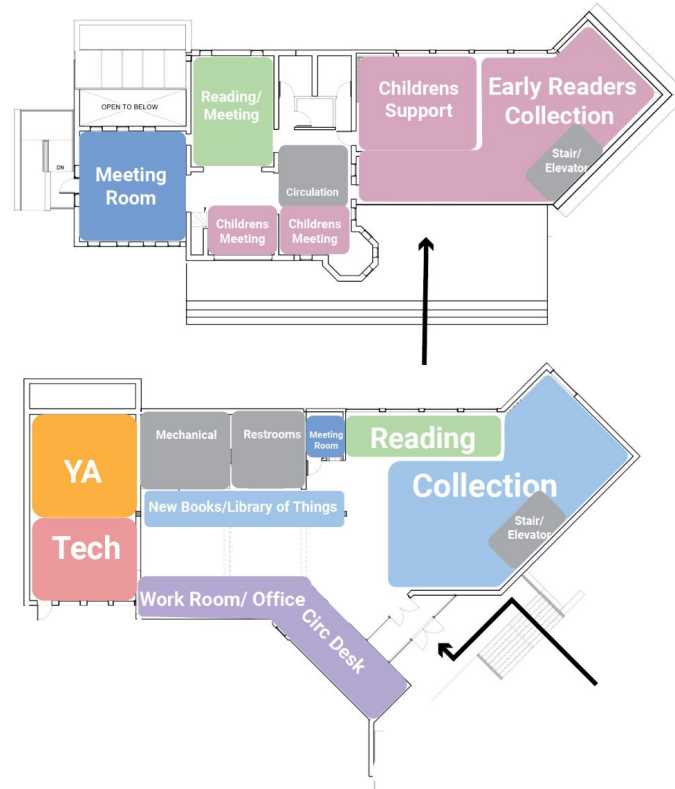
OPTION A: REUSE

- Maintain all of existing structure
- Children's & YA/Teens programs moved to historic space
- Collections on lower level
- Double height meeting room (add acoustic separation)
- New stair, elevator, & bathrooms



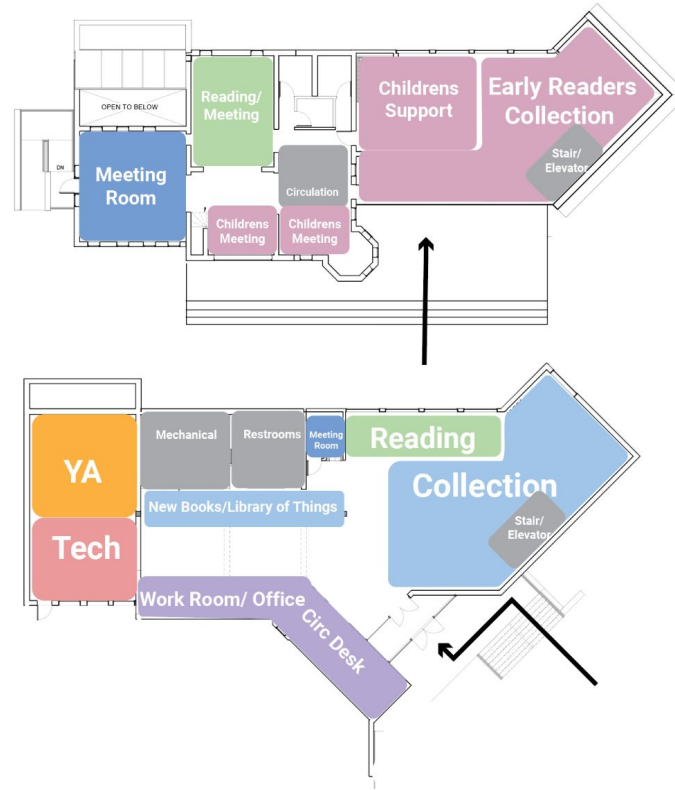
OPTION B1: Extend

- Extend upper level of 70s addition (match walls below)
- New stair & elevator location
- Reading space by large windows
- New Entrance & terrace on upper level
- Large meeting room in historic space (add acoustic separation)
- New Arrivals & Library of Things prominently displayed
- New Teen + Tech section



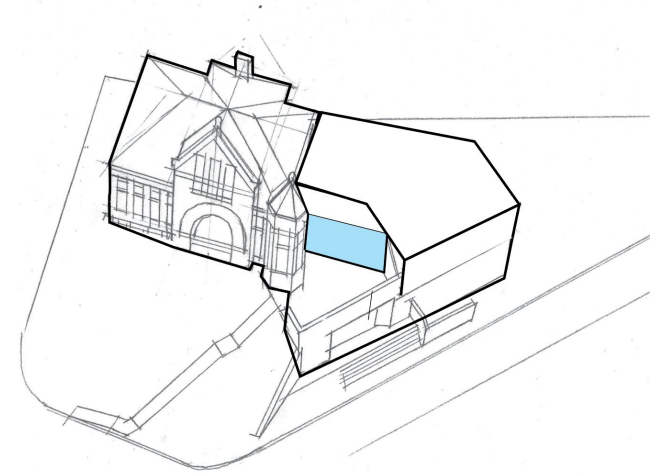
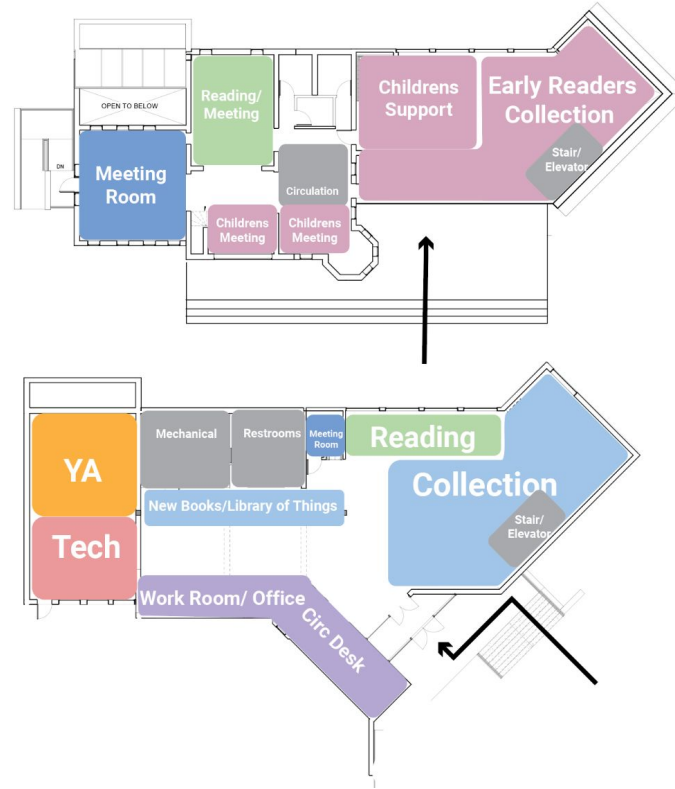
OPTION B1: Extend

- Extend upper level of 70s addition (match walls below)
- New stair & elevator location
- Reading space by large windows
- New Entrance & terrace on upper level
- Large meeting room in historic space (add acoustic separation)
- New Arrivals & Library of Things prominently displayed
- New Teen + Tech section



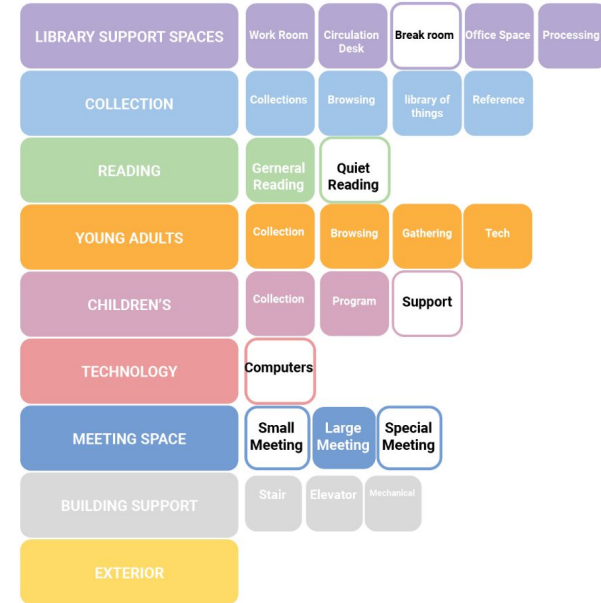
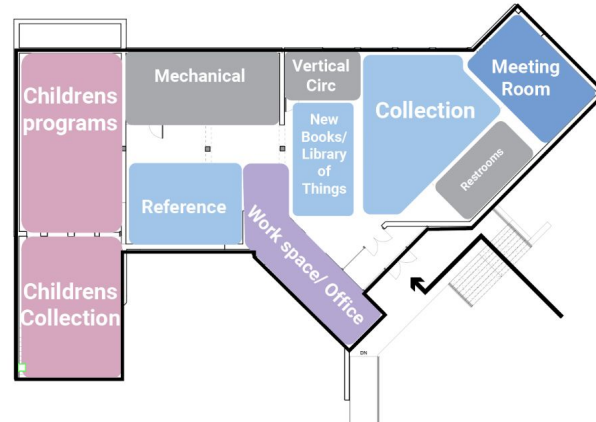
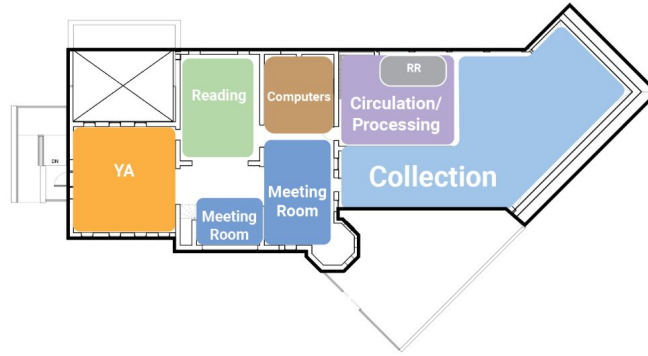
OPTION B1: Extend

- Extend upper level of 70s addition (match walls below)
- New stair & elevator location
- Reading space by large windows
- New Entrance & terrace on upper level
- Large meeting room in historic space (add acoustic separation)
- New Arrivals & Library of Things prominently displayed
- New Teen + Tech section



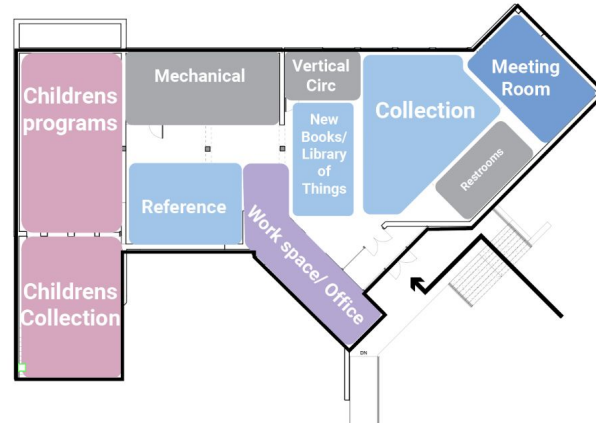
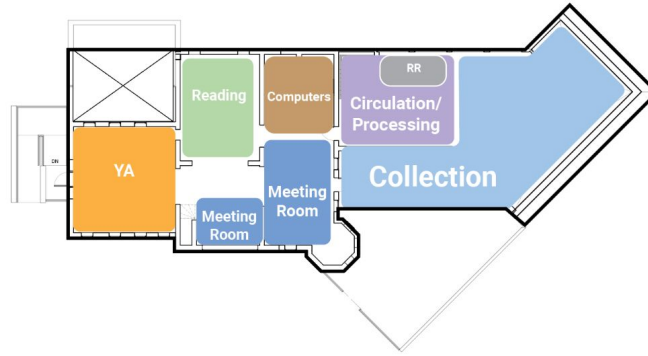
OPTION B2: Children's Wing

- Minor addition on west side of building: Children's Discovery
- Collection occupies majority of 70s addition (both levels)
- Historic spaces become Study & Meeting Rooms and YA/Teen Area.



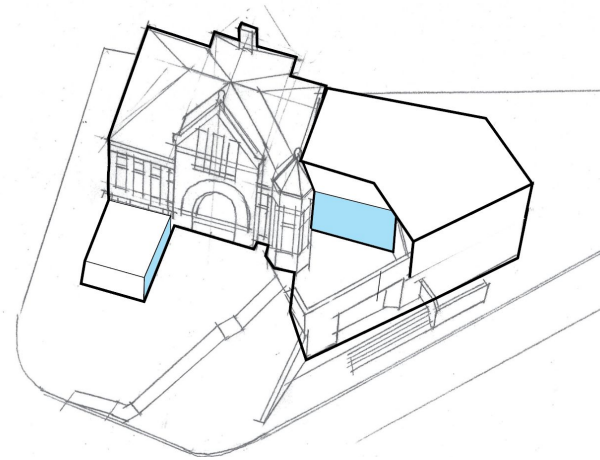
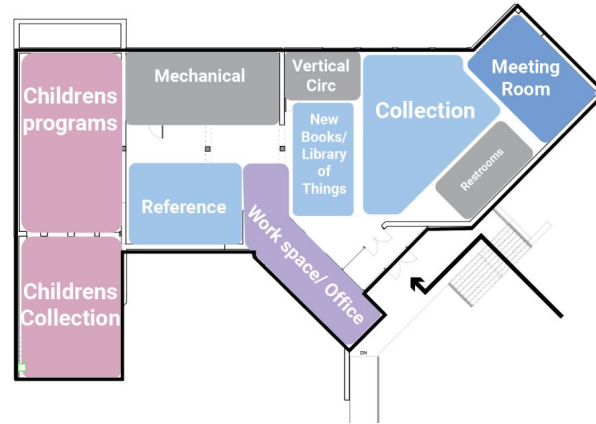
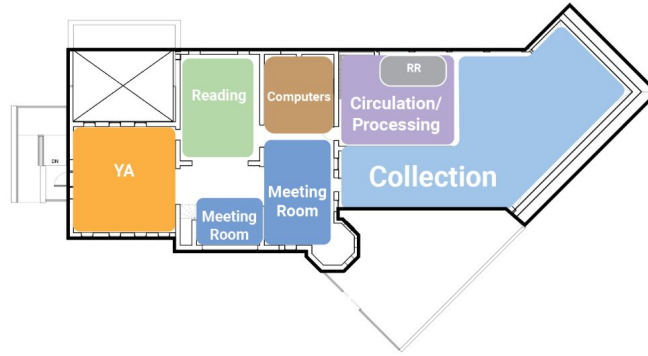
OPTION B2: Children's Wing

- Minor addition on west side of building: Children's Discovery
- Collection occupies majority of 70s addition (both levels)
- Historic spaces become Study & Meeting Rooms and YA/Teen Area.



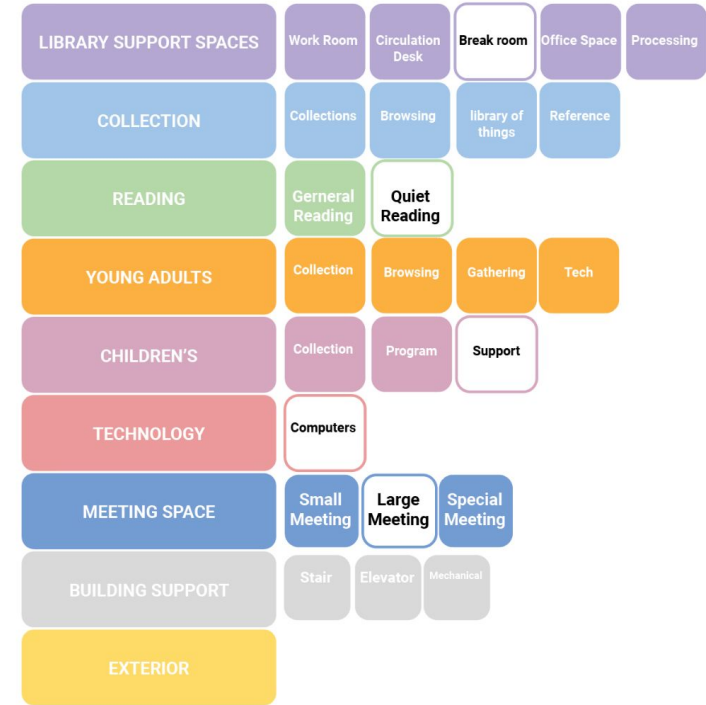
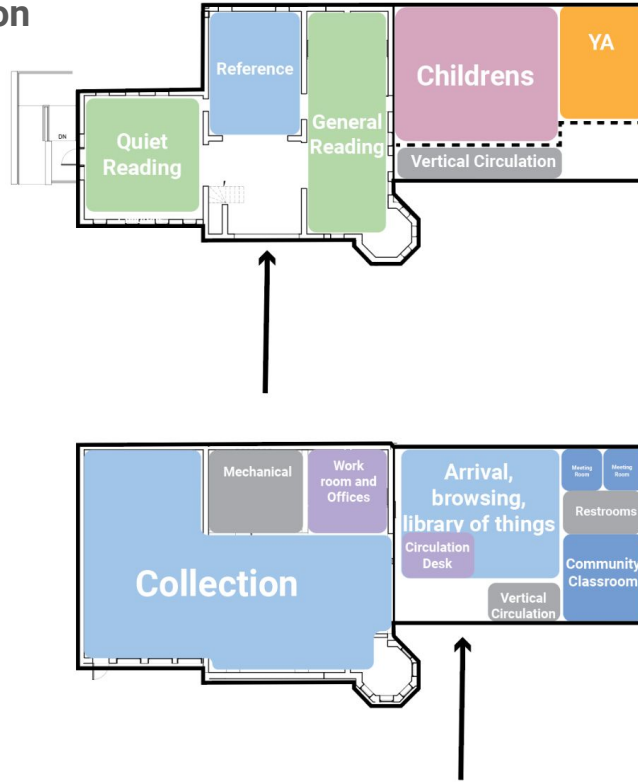
OPTION B2: Children's Wing

- Minor addition on west side of building: Children's Discovery
- Collection occupies majority of 70s addition (both levels)
- Historic spaces become Study & Meeting Rooms and YA/Teen Area.



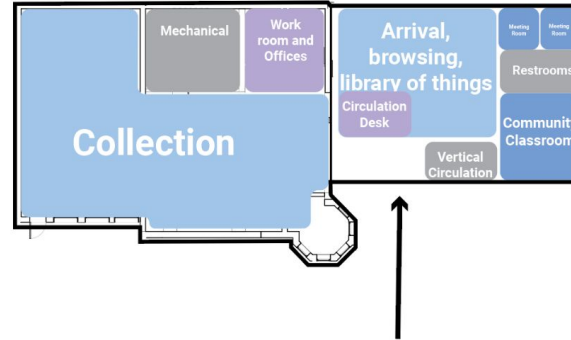
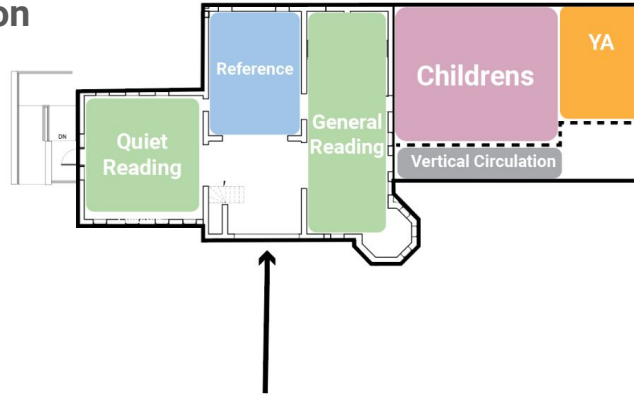
OPTION C1: One Addition

- Demolish all of 70s addition
- Historic spaces host Quiet Reading & Reference
- Collections strictly in existing basement
- Children and YA/Teens share upper floor of addition.
- Restore Historic Entrance (secondary)



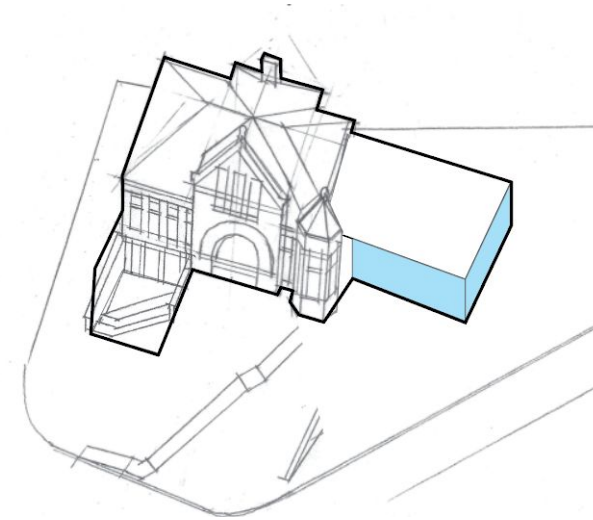
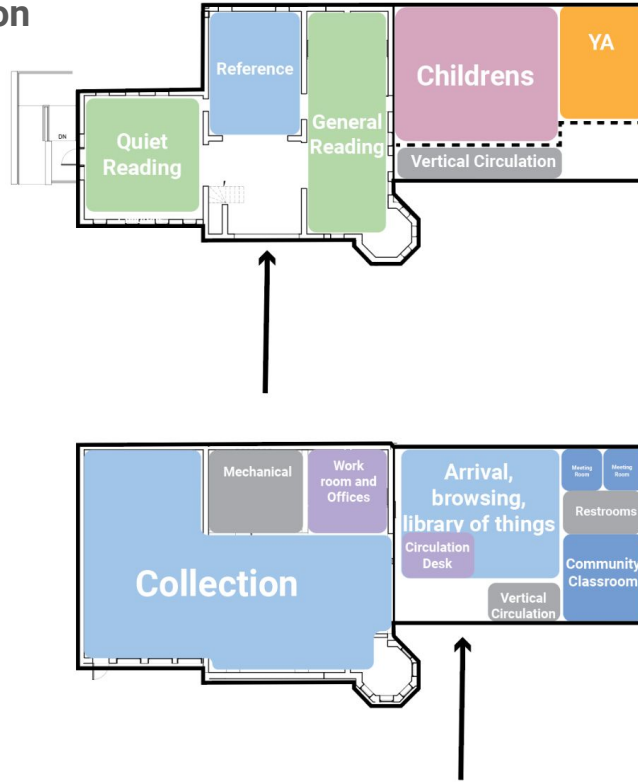
OPTION C1: One Addition

- Demolish all of 70s addition
- Historic spaces host Quiet Reading & Reference
- Collections strictly in existing basement
- Children and YA/Teens share upper floor of addition.
- Restore Historic Entrance (secondary)



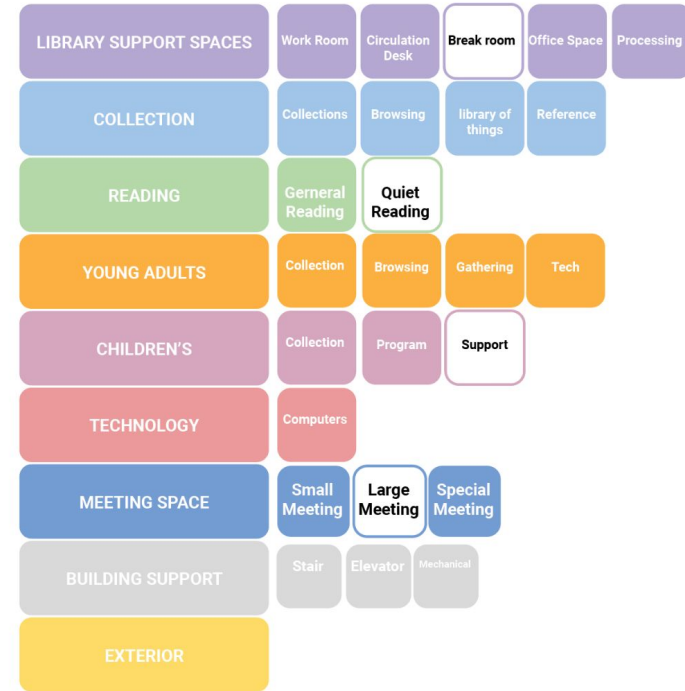
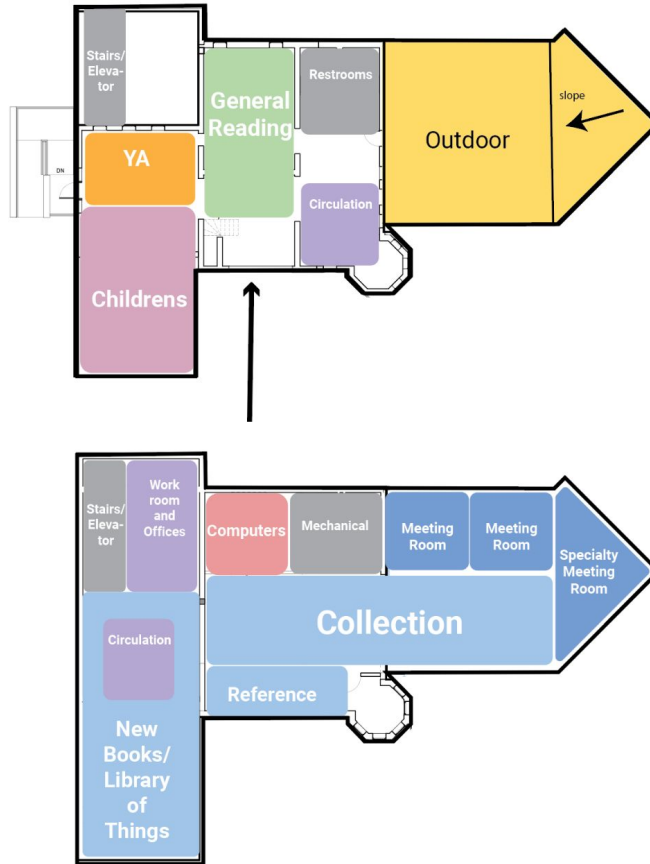
OPTION C1: One Addition

- Demolish all of 70s addition
- Historic spaces host Quiet Reading & Reference
- Collections strictly in existing basement
- Children and YA/Teens share upper floor of addition.
- Restore Historic Entrance (secondary)



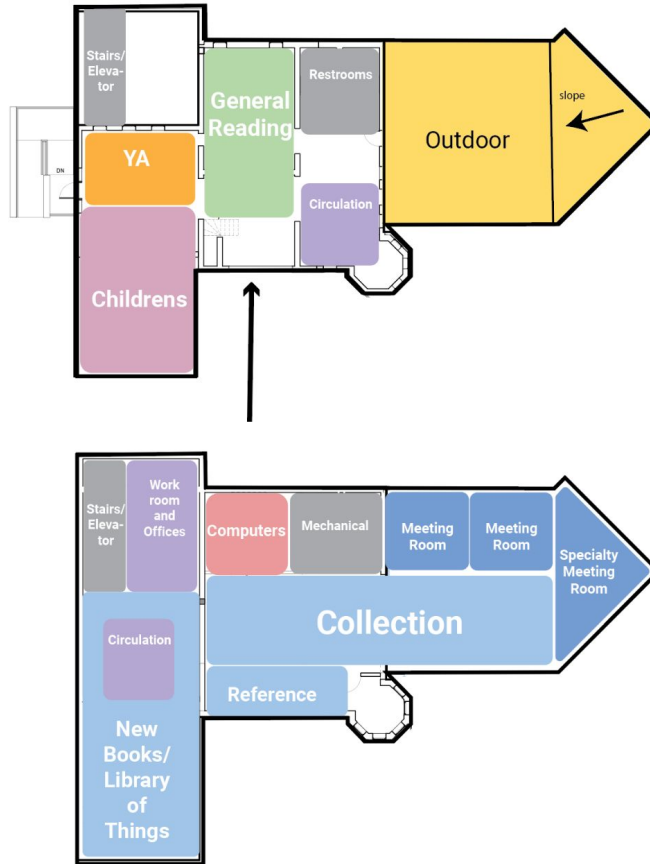
OPTION C2: Two Addition

- Demolish all of 70s addition
- Small additions on both sides of historic building to frame it as central/pivot point
- Left Addition houses new books and Children's space
- New stair in rear of existing building (replace skylight)
- Restore Historic Entrance (primary)
- Collections strictly in existing basement
- Right Addition Roof as Program Space



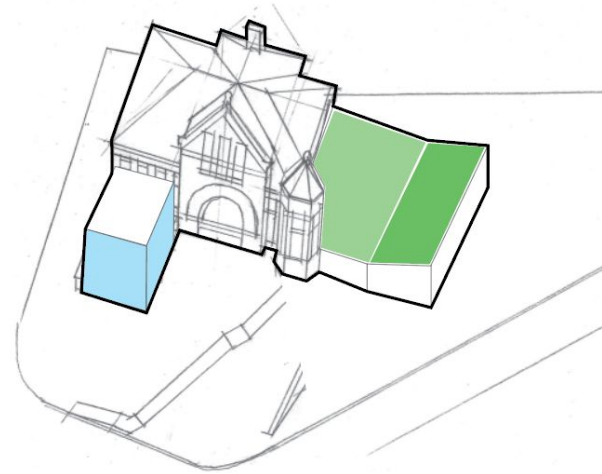
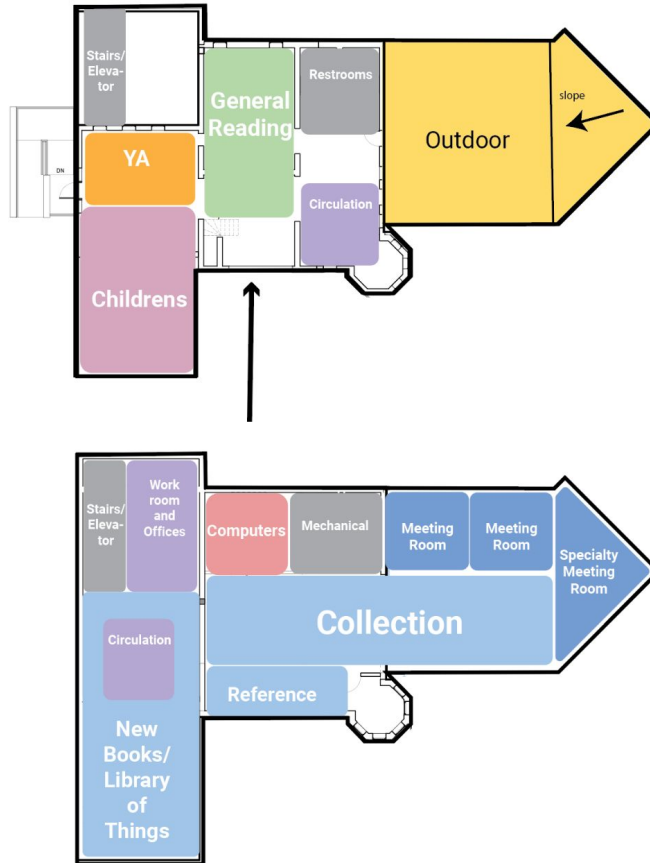
OPTION C2: Two Addition

- Demolish all of 70s addition
- Small additions on both sides of historic building to frame it as central/pivot point
- Left Addition houses new books and Children's space
- New stair in rear of existing building (replace skylight)
- Restore Historic Entrance (primary)
- Collections strictly in existing basement
- Right Addition Roof as Program Space

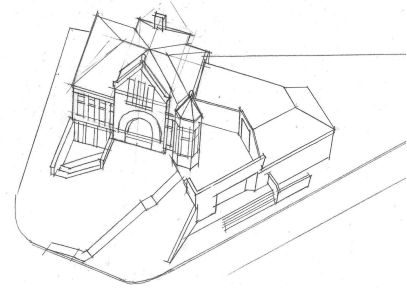


OPTION C2: Two Addition

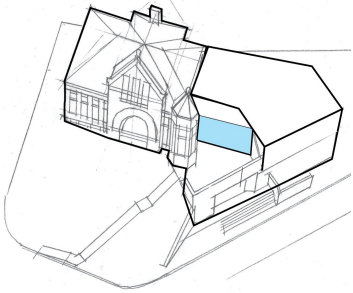
- Demolish all of 70s addition
- Small additions on both sides of historic building to frame it as central/pivot point
- Left Addition houses new books and Children's space
- New stair in rear of existing building (replace skylight)
- Restore Historic Entrance (primary)
- Collections strictly in existing basement
- Right Addition Roof as Program Space



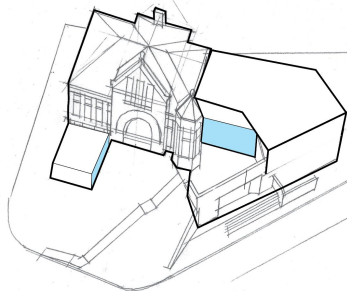
OPTIONS



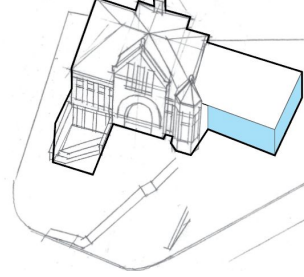
OPTION A: Reuse



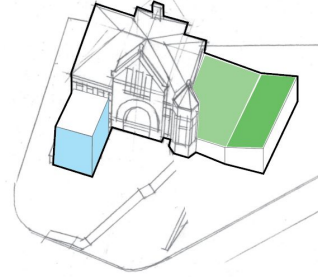
OPTION B1: Extend



OPTION B2: Children's Wing



OPTION C1: One Addition

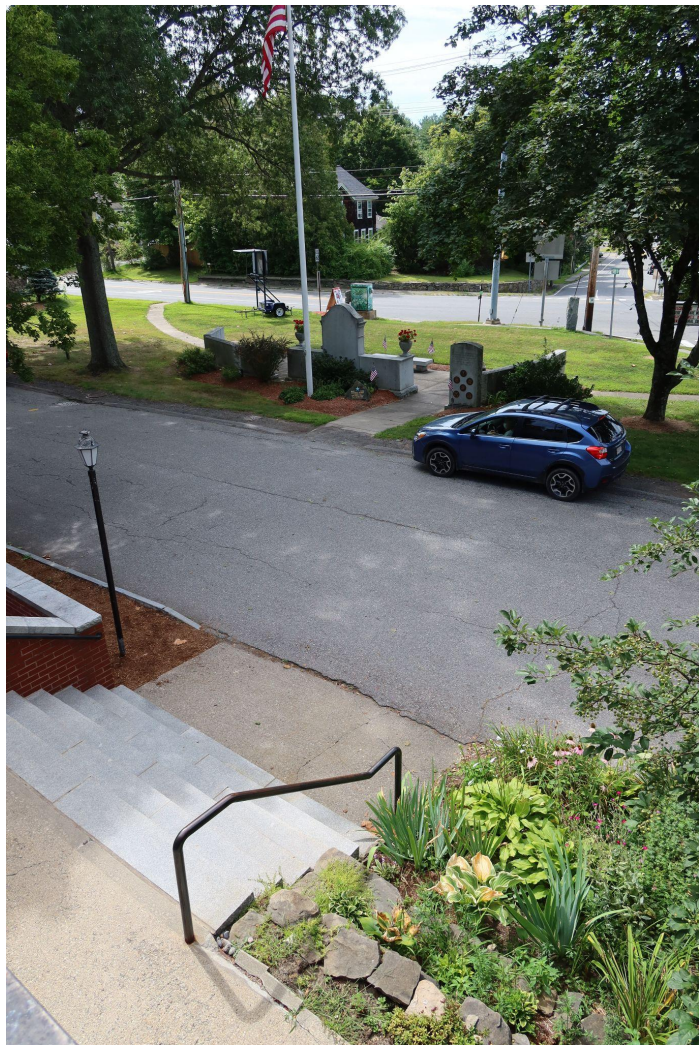


OPTION C2: Two Addition



AGENDA

- Schedule and Process [5 Mins]
- Community Outreach Update [10 Mins]
- Review Preliminary Concept Design Strategies [30 Mins]
- **Review Preliminary Landscape Opportunities [20 Mins]**
- Next Steps [10 Mins]

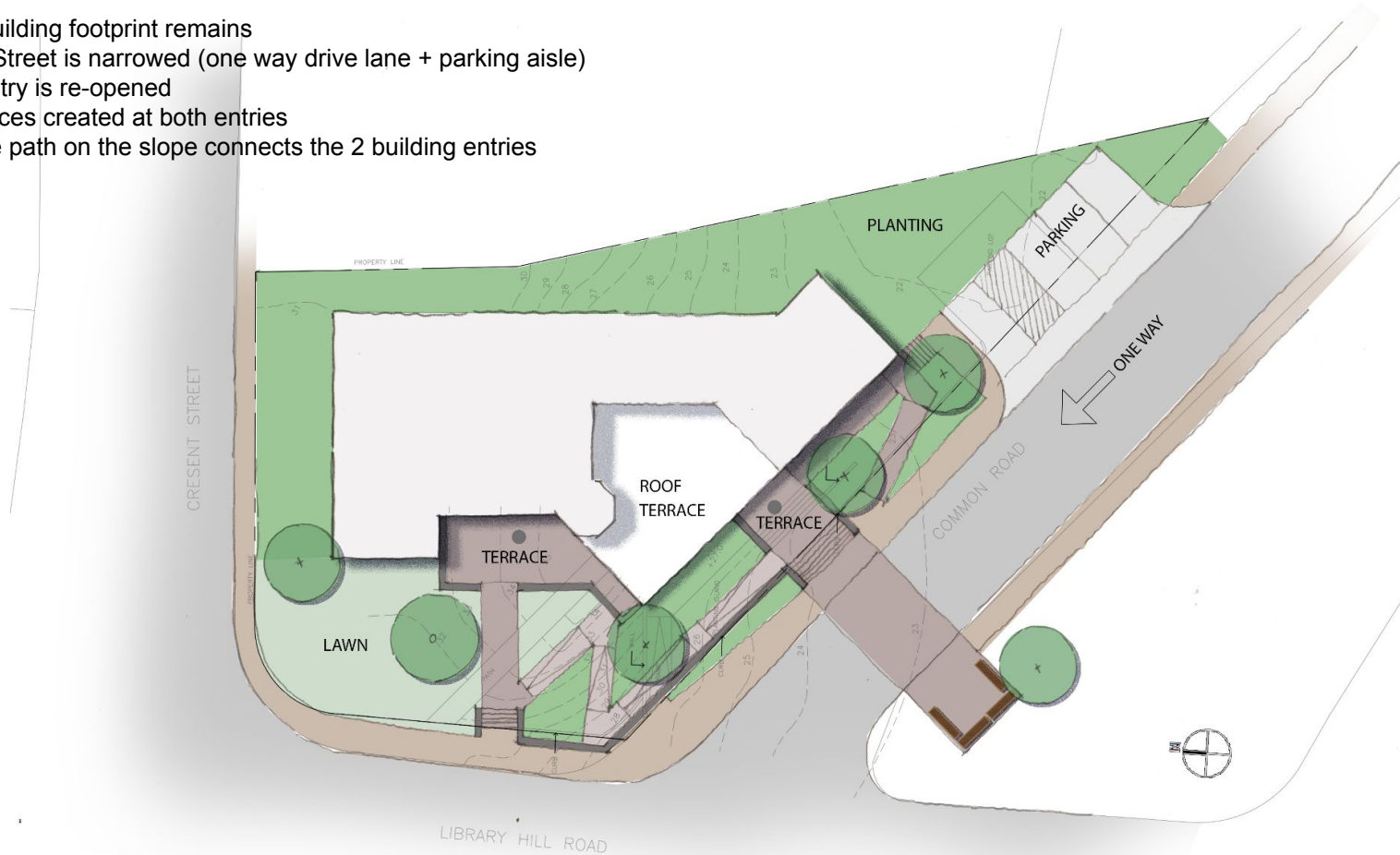






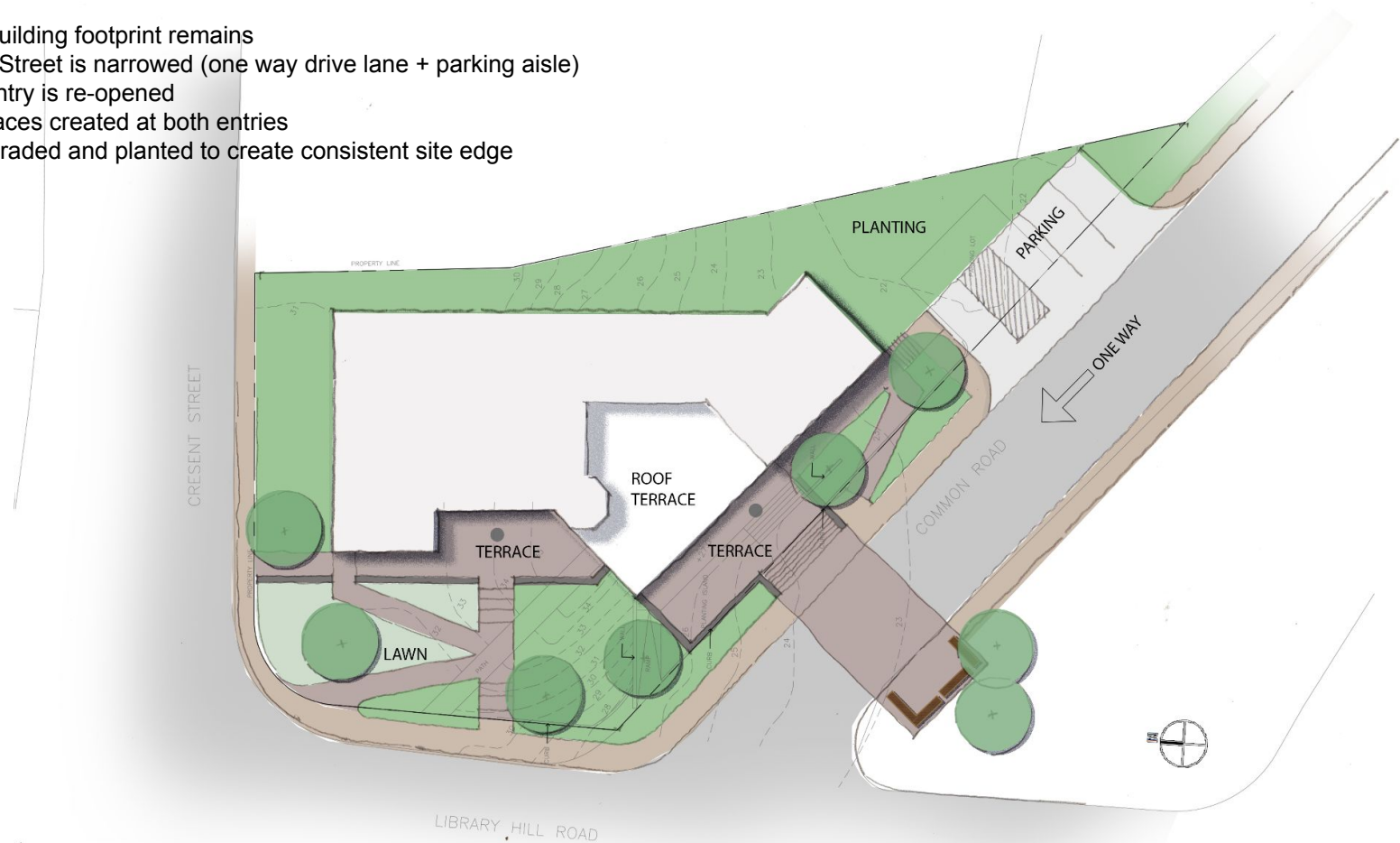
SCHEME A

- Existing building footprint remains
- Common Street is narrowed (one way drive lane + parking aisle)
- Historic entry is re-opened
- Social spaces created at both entries
- Accessible path on the slope connects the 2 building entries



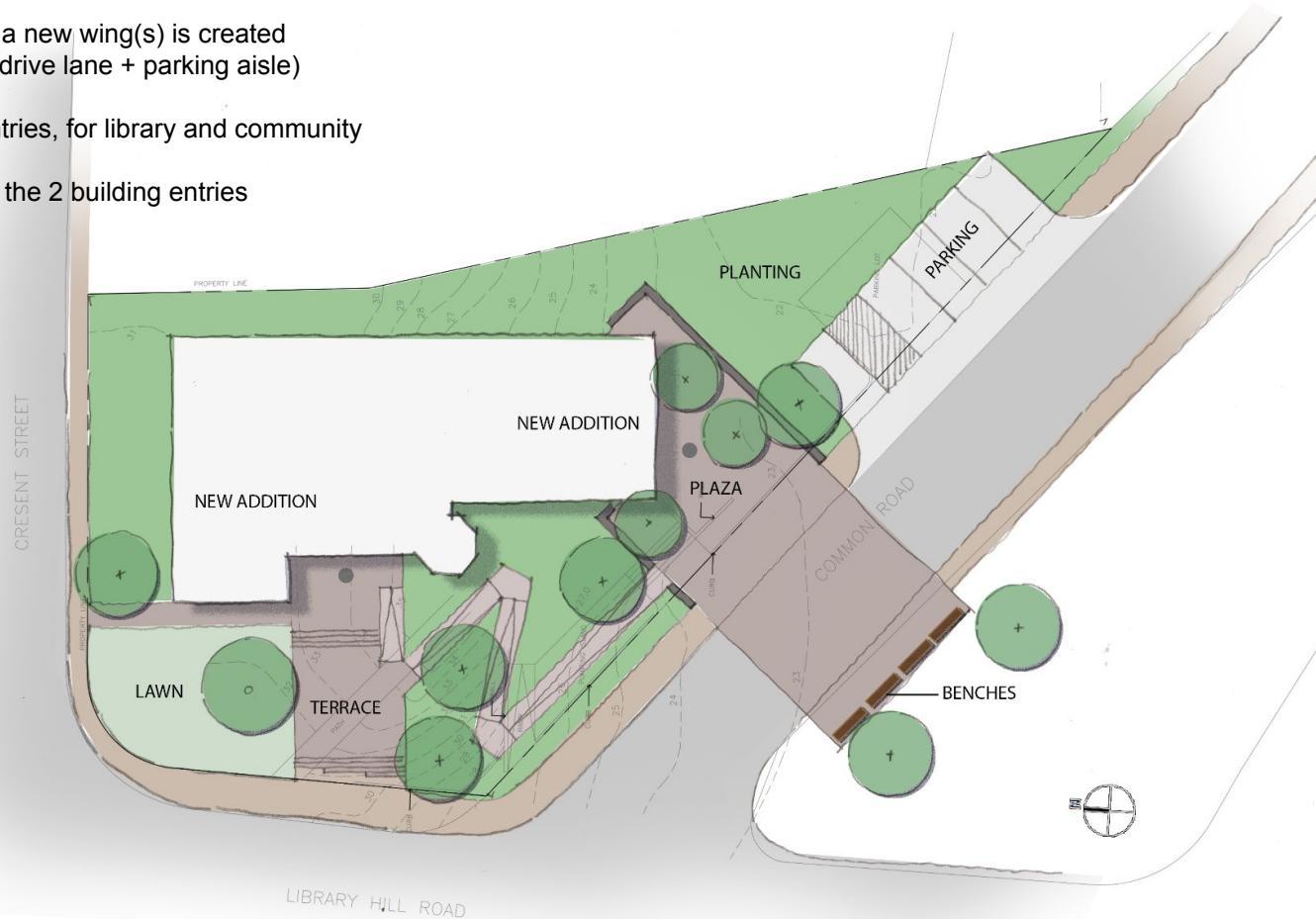
SCHEME B

- Existing building footprint remains
- Common Street is narrowed (one way drive lane + parking aisle)
- Historic entry is re-opened
- Social spaces created at both entries
- Slope is graded and planted to create consistent site edge



SCHEME C

- 1970s building additions are removed, a new wing(s) is created
- Common Street is narrowed (one way drive lane + parking aisle)
- Historic entry is re-opened
- Large social spaces created at both entries, for library and community programming
- Accessible path on the slope connects the 2 building entries





NEXT STEPS

- Schedule and Process [5 Mins]
- Community Outreach Update [10 Mins]
- Review Preliminary Concept Design Strategies [30 Mins]
- Review Preliminary Landscape Opportunities [20 Mins]
- **Next Steps [10 Mins]**

Schedule

Randall Library
Preliminary Workplan

design LAB architects

2021

aug

sept

oct

nov

dec

jan

7/5

7/12

7/19

7/26

8/2

8/9

8/16

8/23

8/30

9/6

9/13

9/20

9/27

10/4

10/11

10/18

10/25

11/1

11/8

11/15

11/22

11/29

12/6

Notice to Proceed

Task 1: Background, Facilities Assessment & Survey

- Review and assess prior reports (1-2 weeks)
- Kick off
- Site Visit

Task 1A: Community Engagement

- Distribute Boards
- Feedback Period
- Collect Feedback

Task 2: Program Development (3 Weeks)

- Program Interviews
- Observation Visit
- Facilities + Maintenance Interview
- Strategy Interview
- Workshop A
- [Program + Assessment Findings]

Task 3: Concept Design (3 Months)

- Workshop B
- [initial concepts]
- Cost Estimate for Options
- Workshop C
- [refined concepts]
- Public Forum
- Workshop D
- [Final Concepts + Public Input Summary]
- Final Presentation to Town Officials

8/5: Kick-Off

8/18: Site Visit

9/13

10/4 or 10/11

Interviews: 8/19 + 8/20

9/7: Workshop A

9/22: Workshop B

Workshop C

Public Forum

Workshop D

Final Presentation to Town Officials



Next Steps

- Workshop C - Weds. 10/20 or 10/27
- Discuss Preliminary November Public Forum Agenda
- Fundraising Progress
- Other