

RANDALL LIBRARY PRELIMINARY DESIGN SUMMARY

TOWN MEETING - 3/8/2023

SCHEMATIC DESIGN WORKSHOP 2

STOW, MA



designLAB architects



G2 COLLABORATIVE
LANDSCAPE ARCHITECTURE

RANDALL LIBRARY PRELIMINARY DESIGN SUMMARY

TOWN MEETING - 3/8/2023
SCHEMATIC DESIGN WORKSHOP 2
STOW, MA

designLAB Team:

Ben Youtz, Partner
Andrew Brookes, Architect

Consultants:

G2 Collaborative
Fitzmeyer + Tocci Associates
RGE Structural Engineers
Nitsch Engineers



designLAB architects



G2 COLLABORATIVE
LANDSCAPE ARCHITECTURE

Today's Agenda

Exterior Committee (30 min)

- Review Work Plan
- Review Goals + Guiding Principles
- Review Existing Building Analysis + Material Palette Options
- Discuss Potential Field Trip Locations
- Discussion + Next Steps

Building Committee (60 min)

- Review Work Plan + Process Updates
- Review Updated Landscape Strategies + Precedents
- Review Updated Building Program
- Review Updated Plan Options
- Discussion + Next Steps

Today's Agenda

Introductions (10 min)

- Review Work Plan + Process Updates

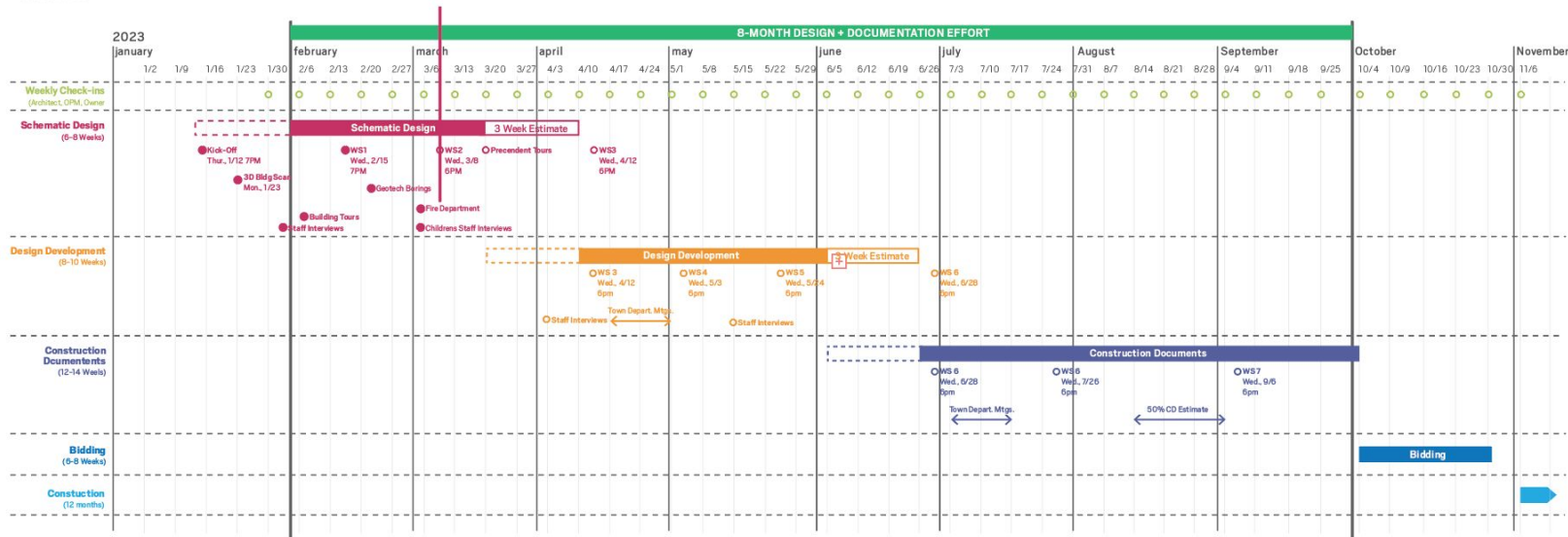
Exterior Committee (30 min)

- Review Goals + Guiding Principles
- Review Existing Building Analysis + Material Palette Options
- Discuss Potential Field Trip Locations

Building Committee (60 min)

- Review Updated Landscape Strategies + Precedents
- Review Updated Building Program
- Review Updated Plan Options

Discussion + Next Steps (15 min)



Schematic Design (6-8 Weeks)

Staff Interviews / Tours (Week of 1/30 or 2/6)

- Attendees:
 - Library Director + Staff
 - designLAB architects
- Goals:
 - Review C+ Discuss Concept Design Plans with Staff

WS1 (Wed, 2/15 7PM)

- Attendees:
 - Building Committee
 - Exterior Committee
 - Colliers (OPM)
 - designLAB architects
- Goals:
 - Review Staff Concept Design Feedback
 - Review Preliminary Building Program
 - Share 3D Building Scan
 - Review Exterior Design Precedents + Establish Exterior Design Guiding Principles

WS2 (Wed, 3/9 7PM)

- Attendees:
 - Building Committee
 - Exterior Committee

- Colliers (OPM)
- designLAB architects
- G2 Collaborative

Goals:

- Review + Discuss Updated Building + Landscape Plans
- Review + Discuss Exterior Building Character
- Review Preliminary Program Document

Design Development (8-10 Weeks)

WS3 (Wed, 4/13 7PM)

- Attendees:
 - Building Committee
 - Exterior Committee
 - Colliers (OPM)
 - designLAB architects
- Goals:
 - Review SD Drawing Package + Estimate
 - Review Refined Building Program

- Town Department Meetings (Week of 4/17 + 4/24)
- Attendees:
 - Fire Department, Building Department, Public Works, etc.
 - Colliers (OPM)
 - designLAB architects
 - G2 Collaborative
 - Engineering Team (Civil, MEPFP)

Goals:

- Review SD Drawing Package
- Review Building System + Infrastructure Goals

WS4 (Wed, 5/3 7PM)

- Attendees:
 - Building Committee
 - Exterior Committee
 - Colliers (OPM)
 - designLAB architects
 - G2 Collaborative
 - P&T (MEFPF)
- Goals:
 - Review Summary of Town Department Meetings
 - Review Updated Building Plans
 - Review Preliminary Exterior Character Drawings
 - Review Updated Landscape Drawings
 - Review Refined Building Program

WS5 (Wed, 5/24 7PM)

- Attendees:
 - Building Committee
 - Exterior Committee
 - Colliers (OPM)
 - designLAB architects

Goals:

- Review Updated Building Plans + Preliminary Exterior Character Drawings

Construction Documents (12-14 Weeks)

WS5 (Wed, 6/28 7PM)

- Attendees:
 - Building Committee
 - Exterior Committee
 - Colliers (OPM)
 - designLAB architects
- Goals:
 - Review DD Drawing Package + Estimate

Town Department Meetings (Week of 7/3 + 7/10)

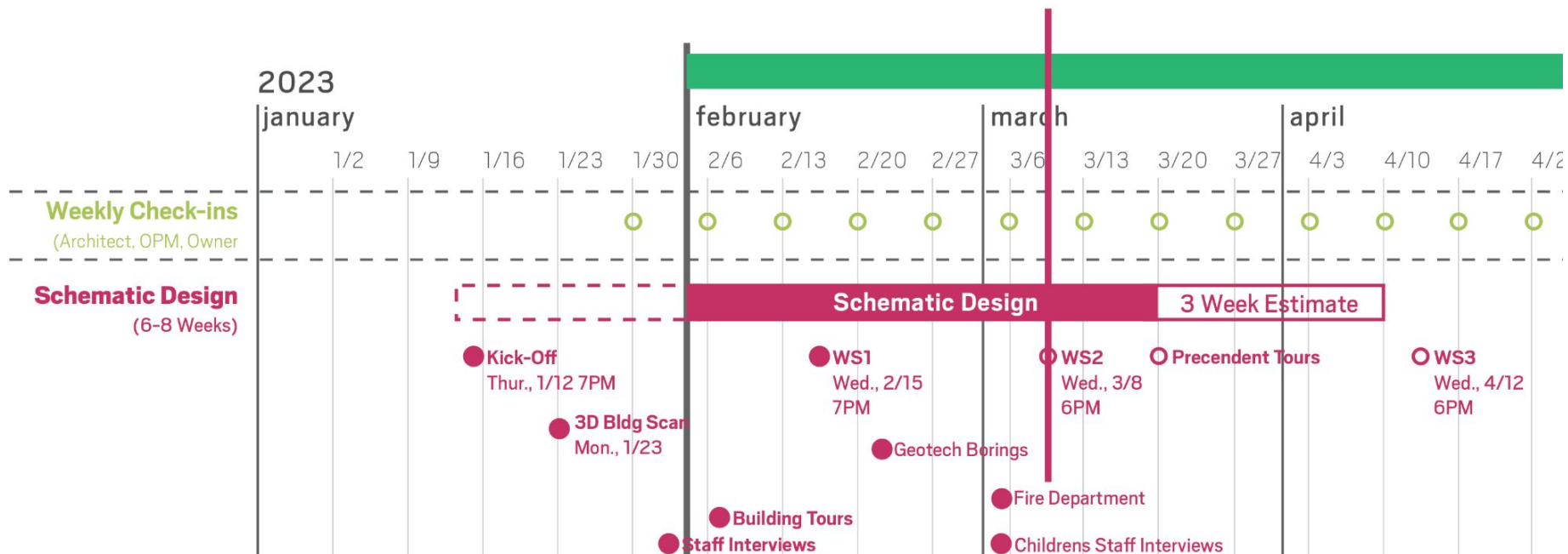
- Attendees:
 - Fire Department, Building Department, Public Works, etc.
 - Colliers (OPM)
 - designLAB architects
 - G2 Collaborative
 - Engineering Team (Civil, MEPFP)
- Goals:
 - Review DD Drawing Package
 - Review Building System + Infrastructure Goals

WS6 (Wed, 7/26 7PM)

- Attendees:
 - Building Committee
 - Exterior Committee
 - Colliers (OPM)
 - designLAB architects
 - G2 Collaborative
- Goals:
 - Review Summary of Town Department Meetings
 - Review Updated Building Plans
 - Review Preliminary Exterior Character Drawings
 - Review Updated Landscape Drawings
 - Review Refined Building Program

WS7 (Wed, 8/6 7PM)

- Attendees:
 - Building Committee
 - Exterior Committee
 - Colliers (OPM)
 - designLAB architects
- Goals:
 - Review 50% CD Estimate
 - Review Final Design Materials



Today's Agenda

Introductions (10 min)

- Review Work Plan + Process Updates

Exterior Committee (30 min)

- Review Goals + Guiding Principles
- Review Existing Building Analysis + Material Palette Options
- Discuss Potential Field Trip Locations

Building Committee (60 min)

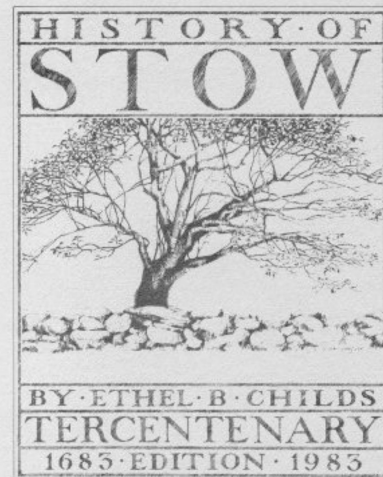
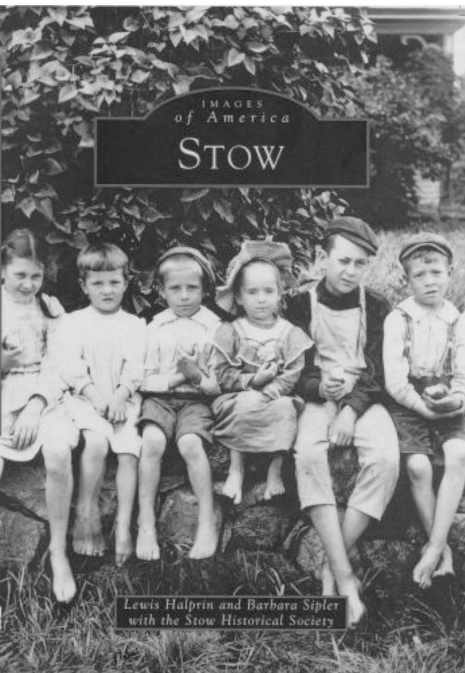
- Review Updated Landscape Strategies + Precedents
- Review Updated Building Program
- Review Updated Plan Options

Discussion + Next Steps (15 min)

guiding principles

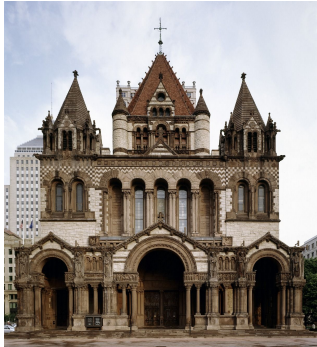
- The character of the addition should be rooted in the context that defines Stow
- Addition should feed distinct, yet complementary, to original Library building as its own 'gem'
- Create a balanced composition of materials, cuing from the defining elements of the original Library
- Composition should include natural materials: fieldstone, copper, slate, wood. Some glass, but not all glass, should be explored .

Context

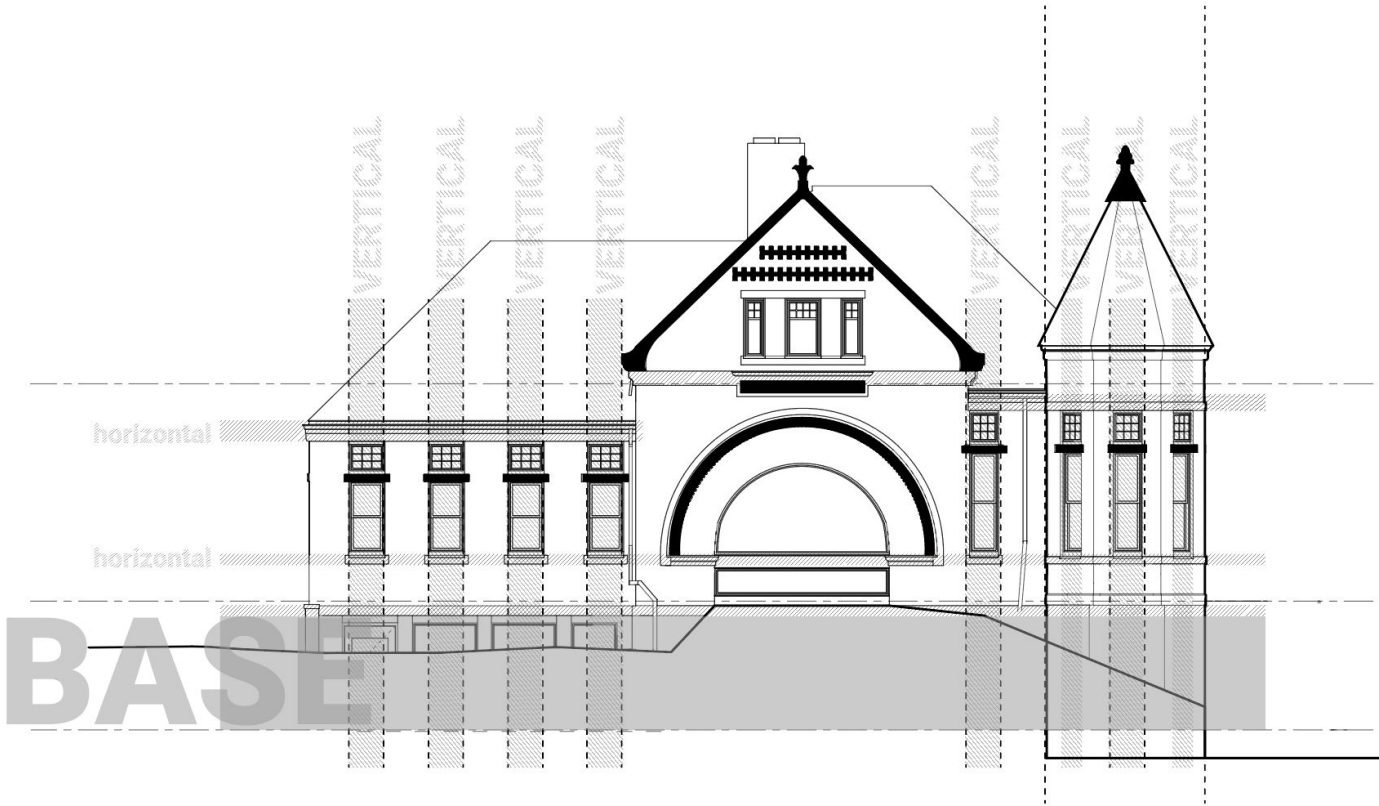


Richardsonian Romanesque

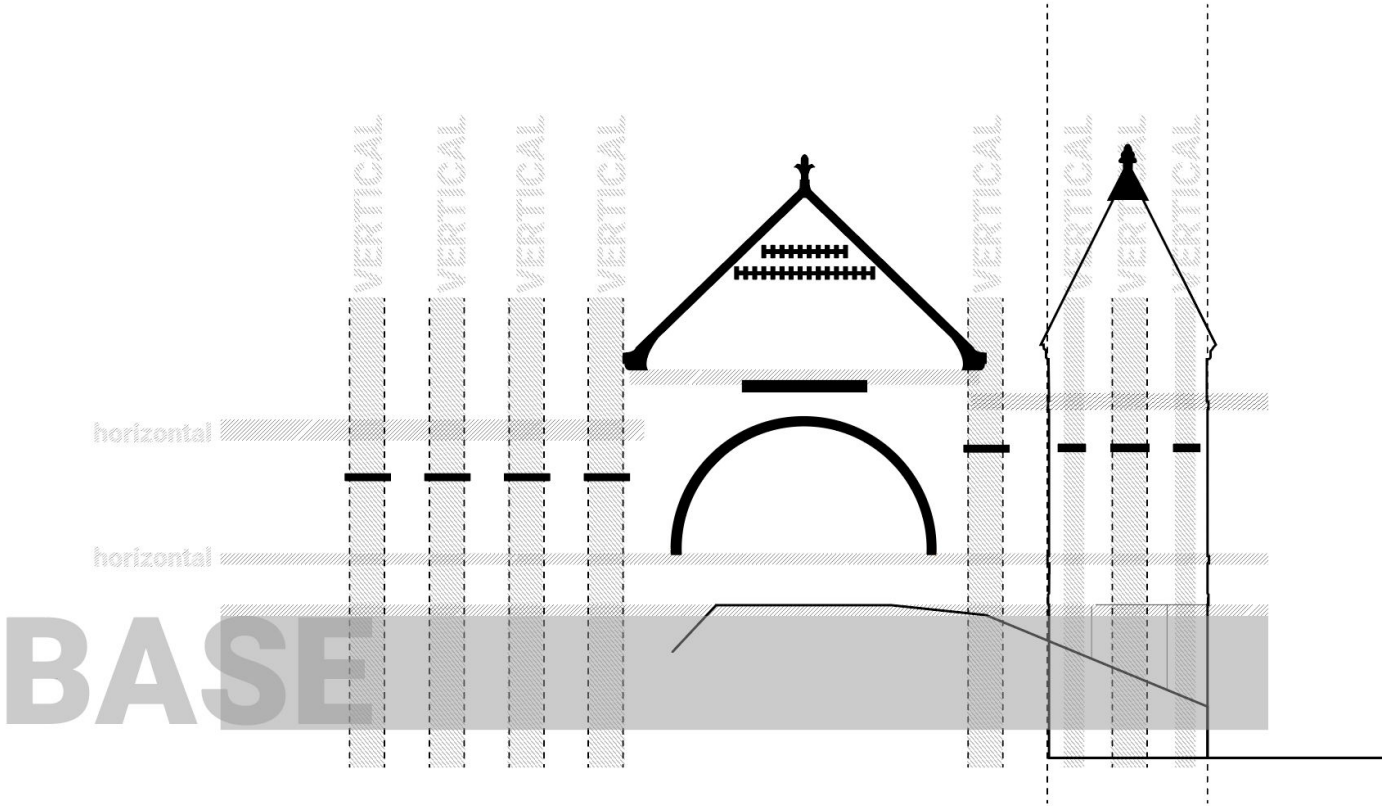
- It emphasizes clear, strong picturesque massing
- round-headed "Romanesque" arches recessed entrances
- richly varied rustication
- blank stretches of walling contrasting with bands of windows,
- cylindrical towers with conical caps embedded in the walling



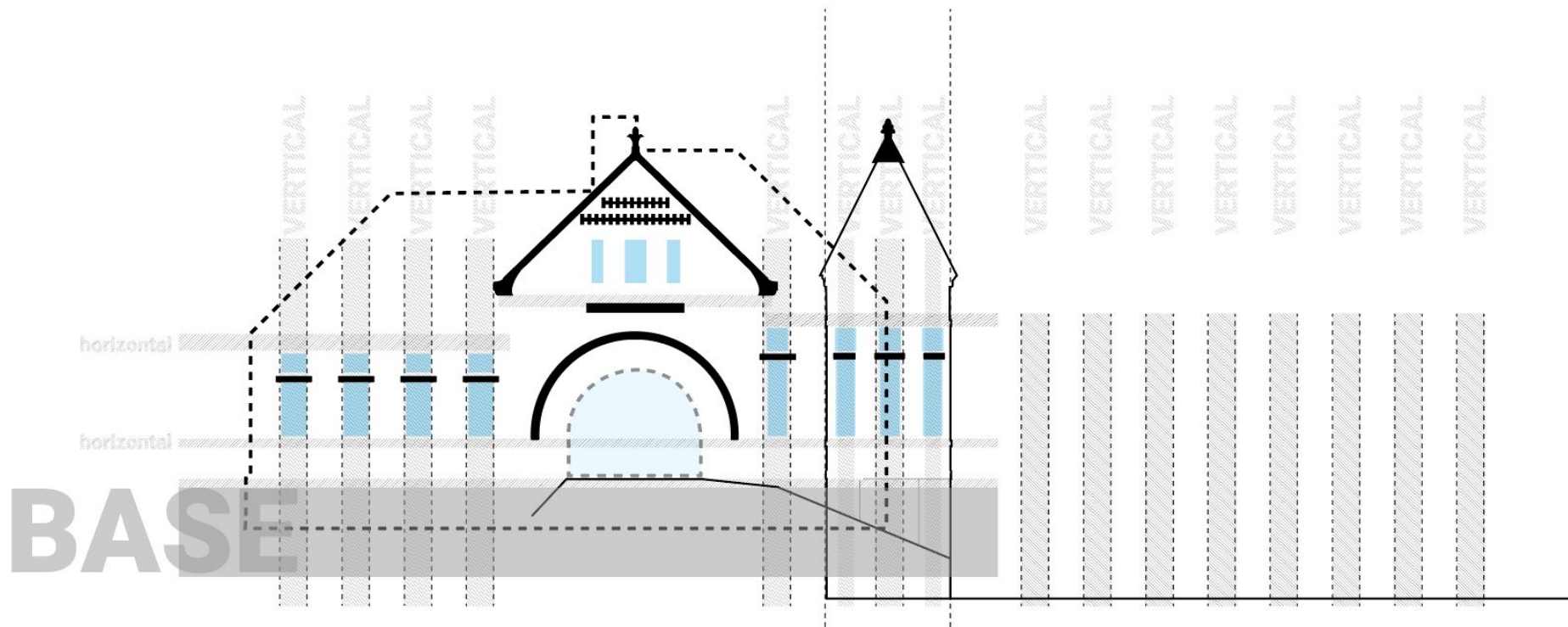
Addition Analysis

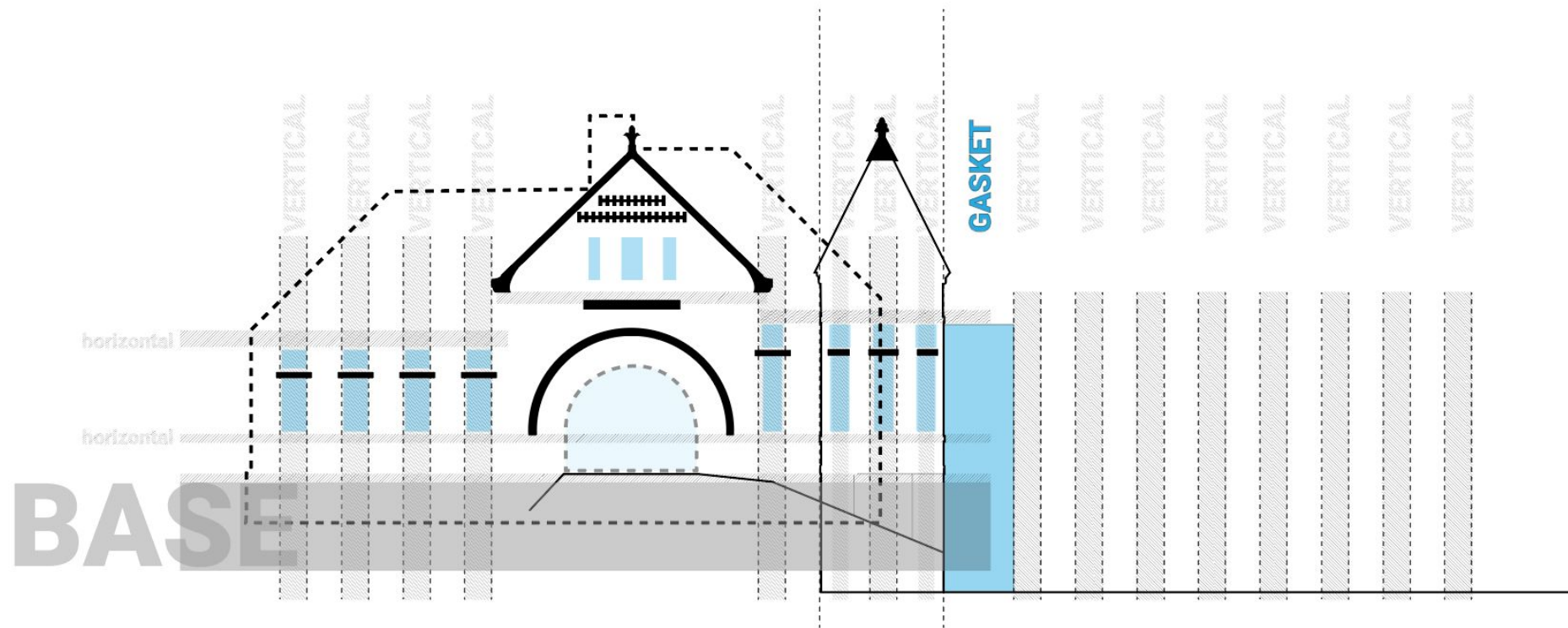


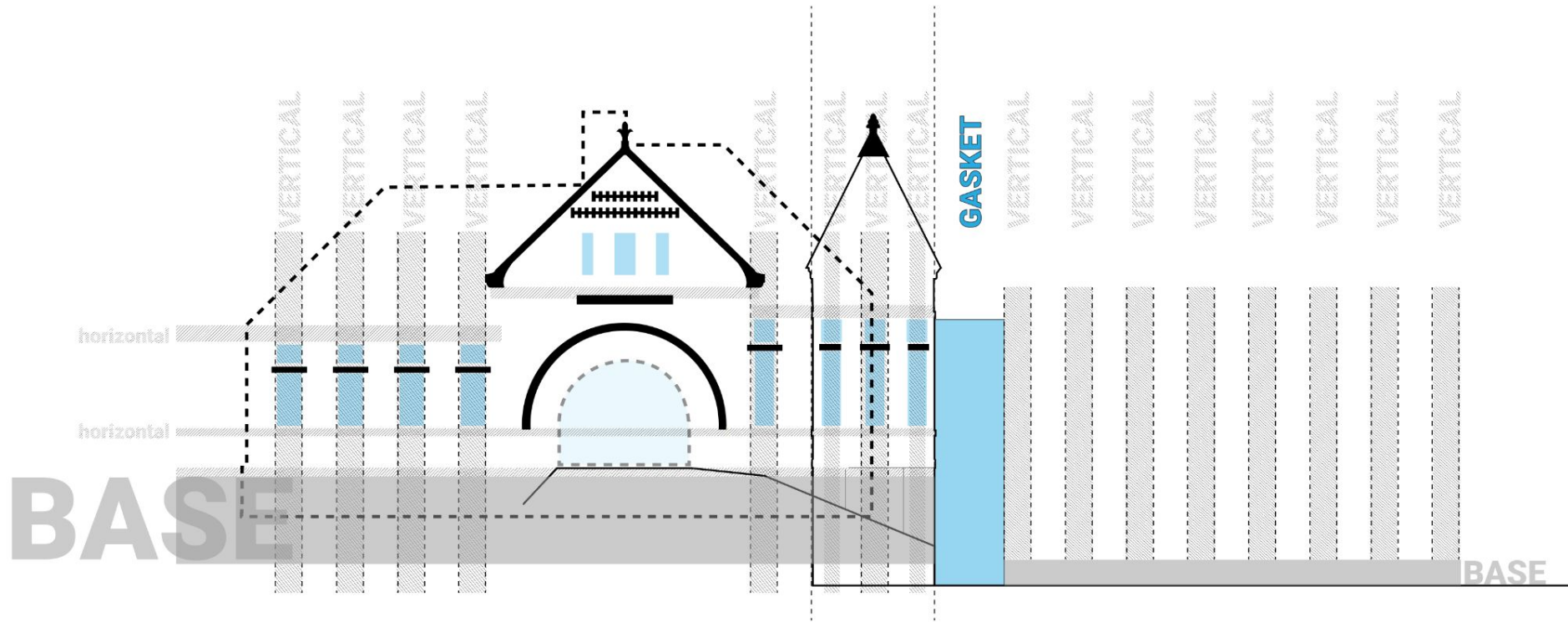
Addition Analysis

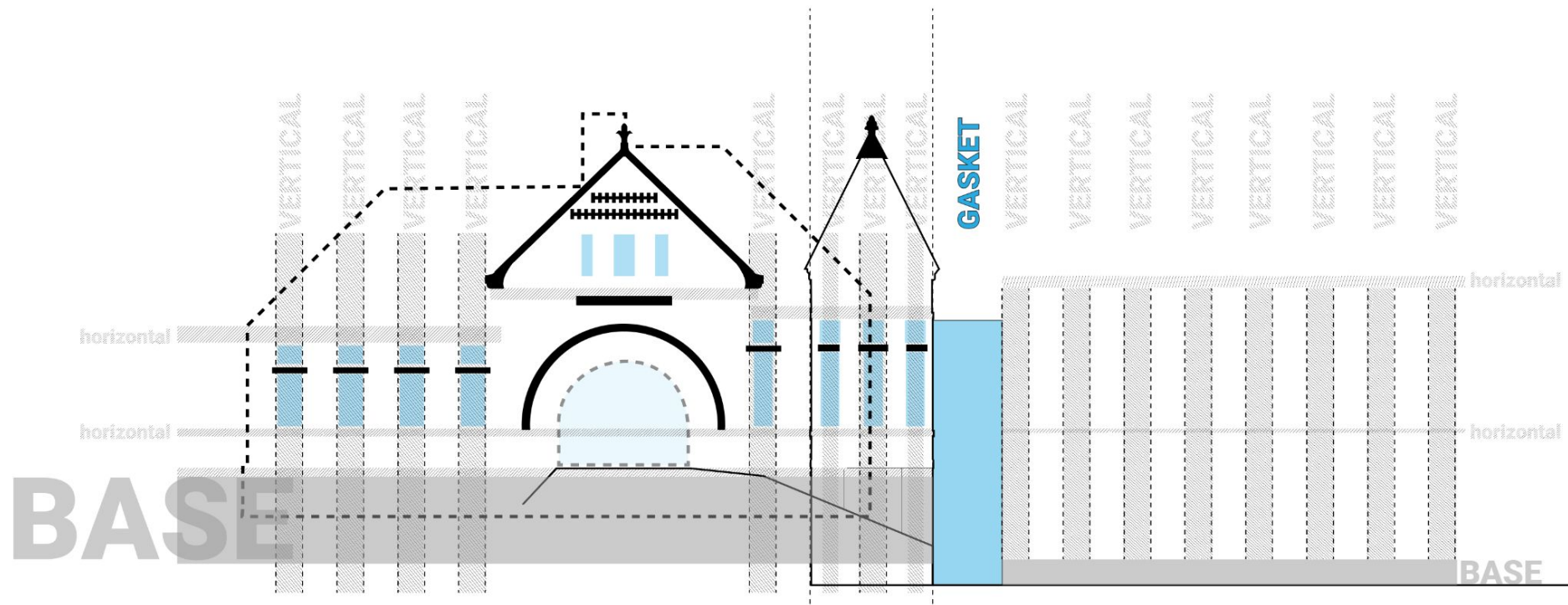


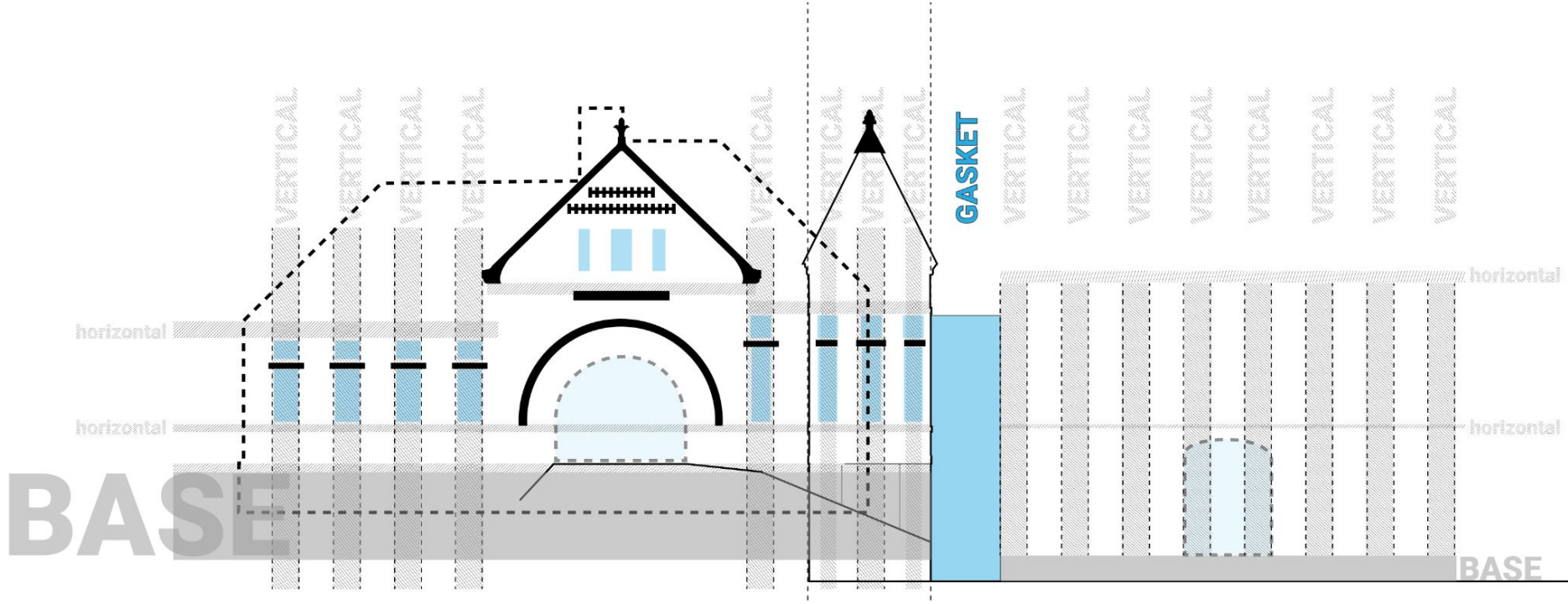


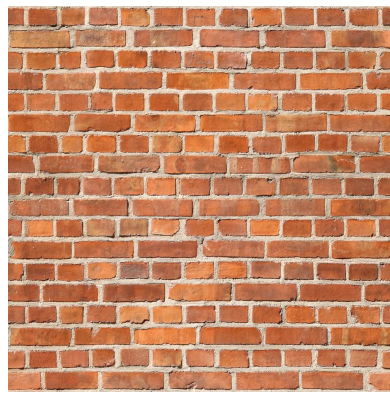
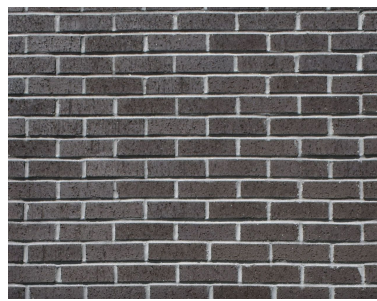


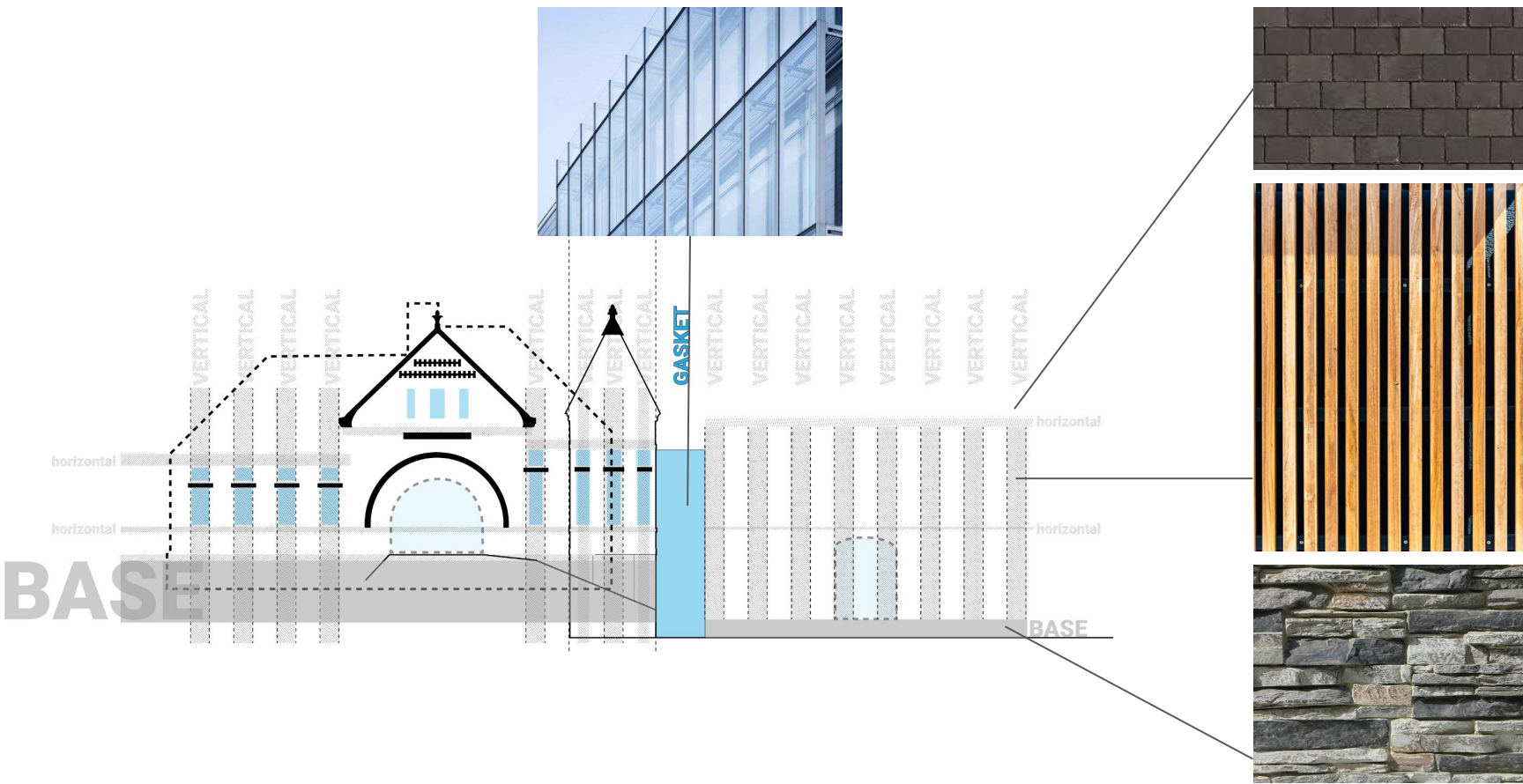


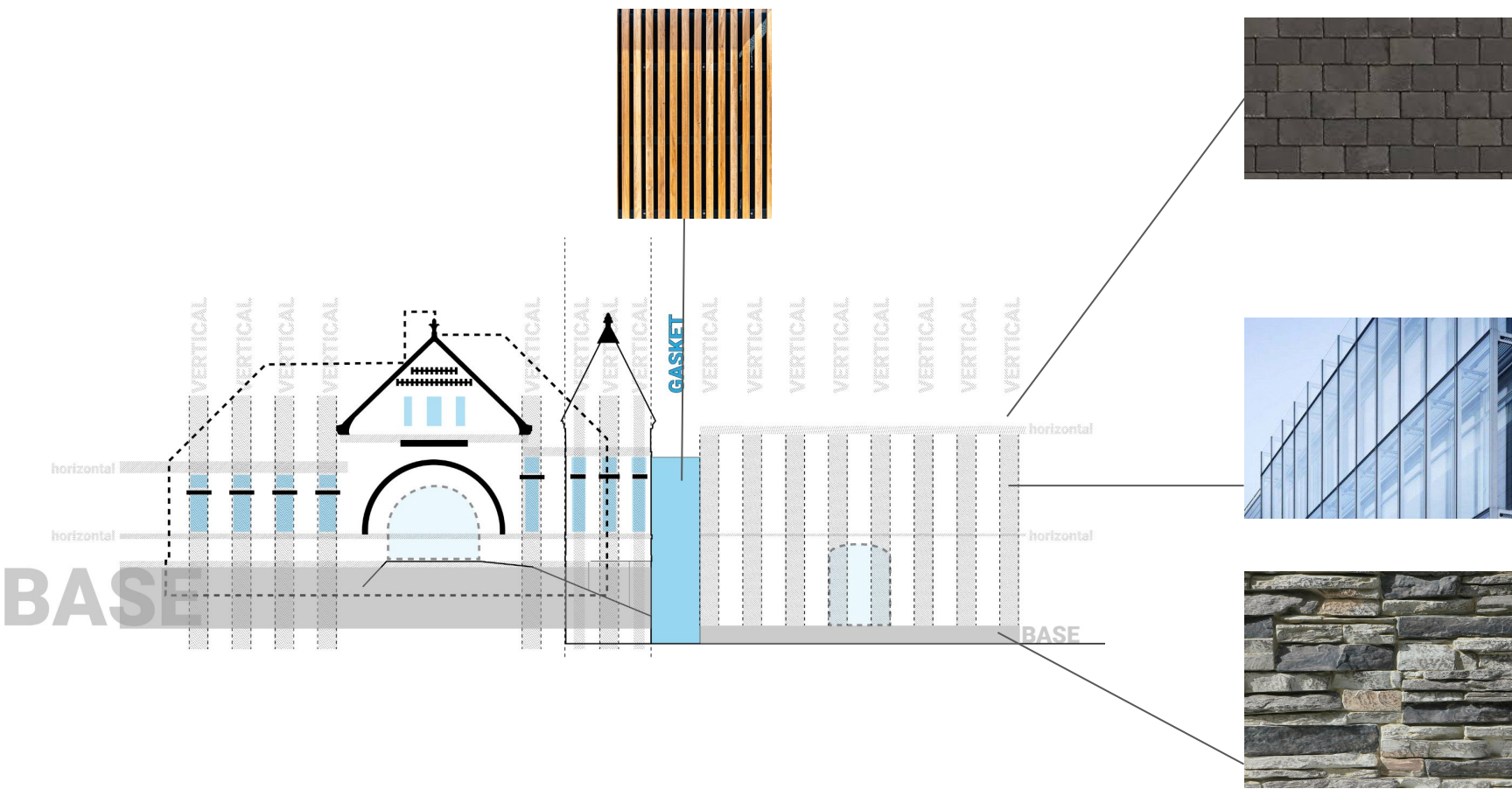


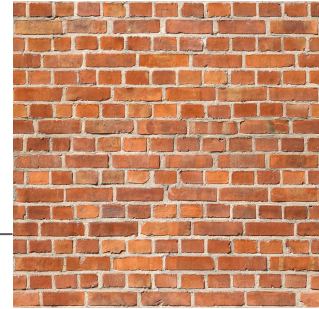
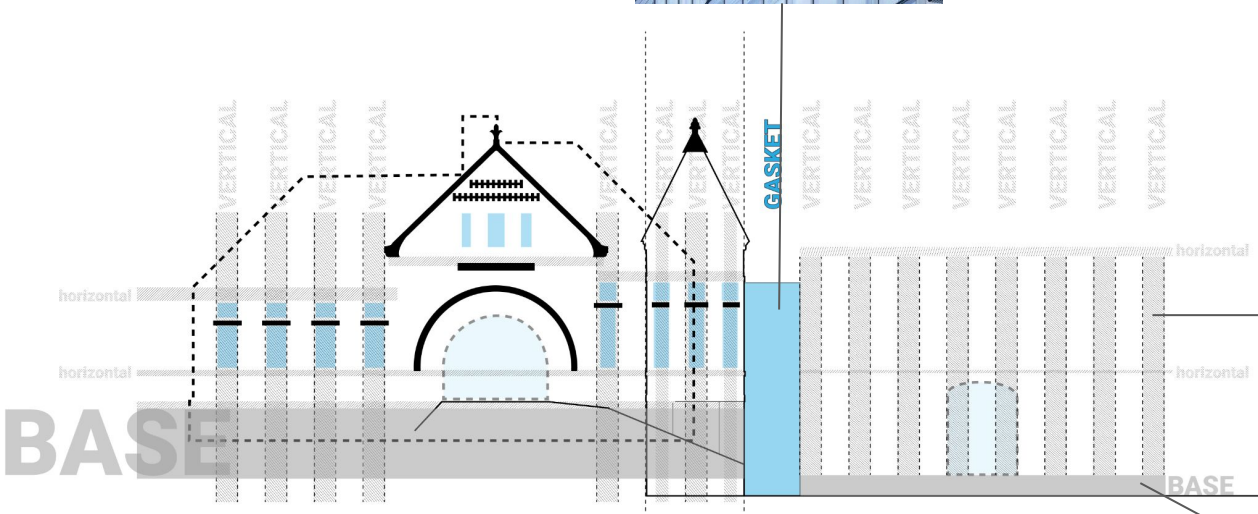


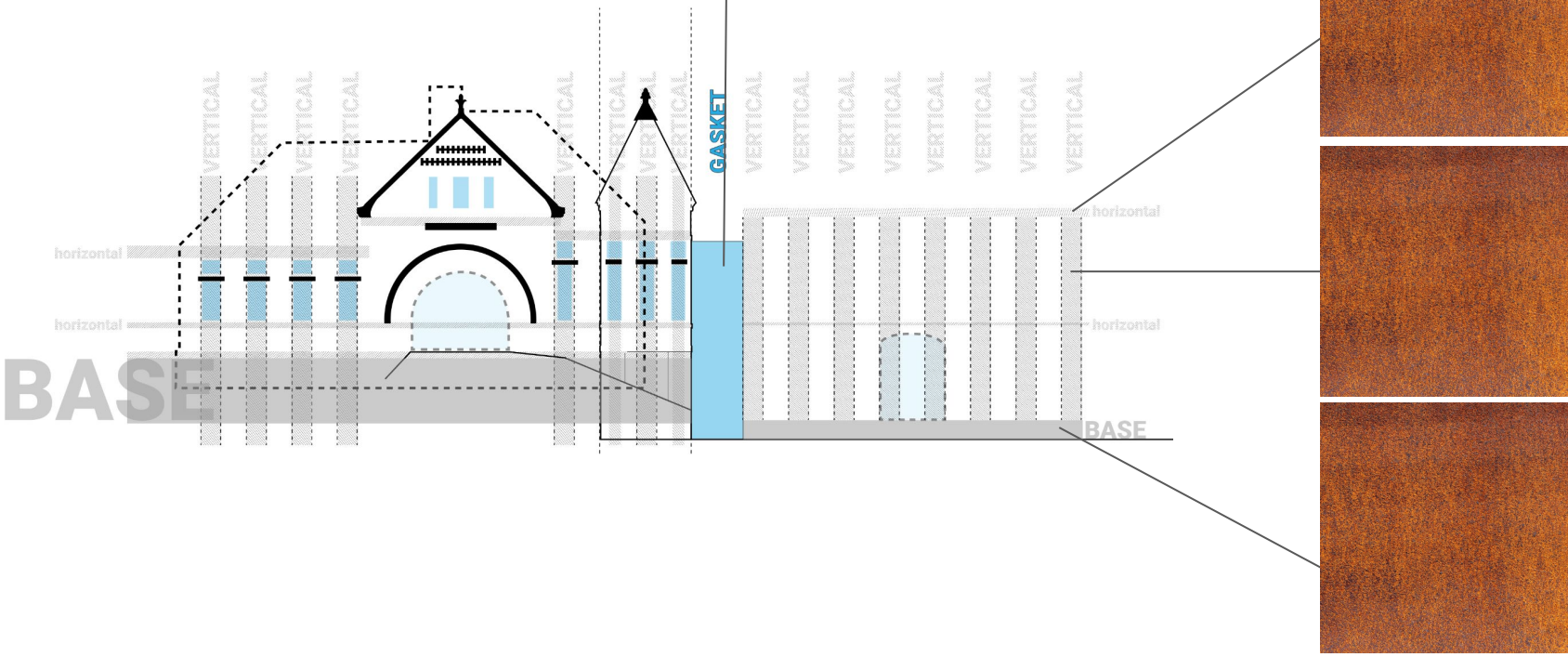


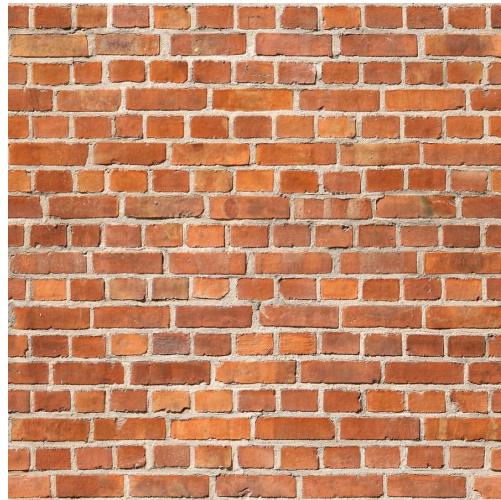
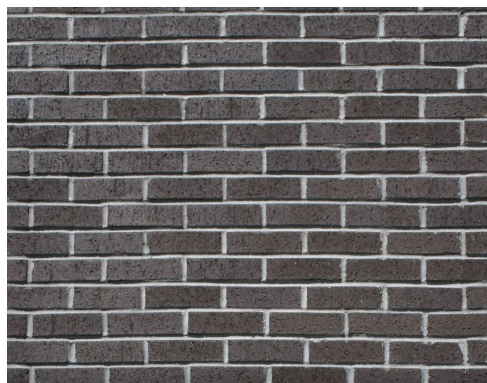
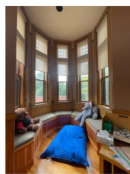
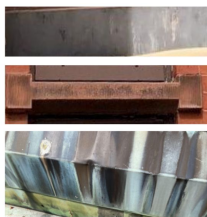


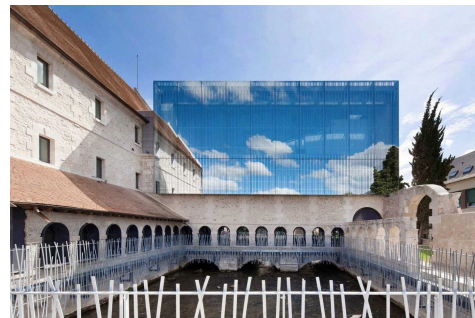






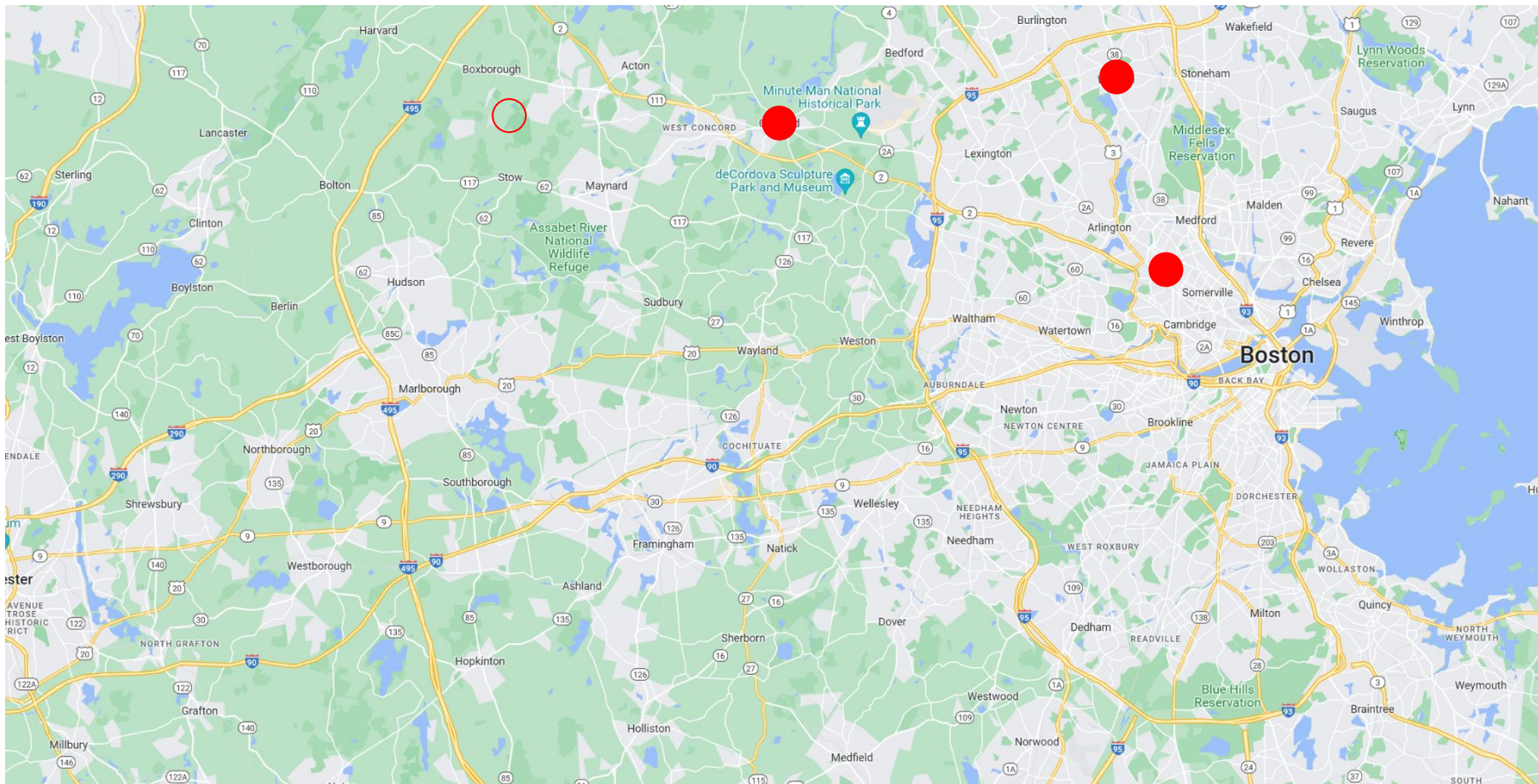






Field Trip Locations

Field Trip Locations



Field Trip Locations



Today's Agenda

Introductions (10 min)

- Review Work Plan + Process Updates

Exterior Committee (30 min)

- Review Goals + Guiding Principles
- Review Existing Building Analysis + Material Palette Options
- Discuss Potential Field Trip Locations

Building Committee (60 min)

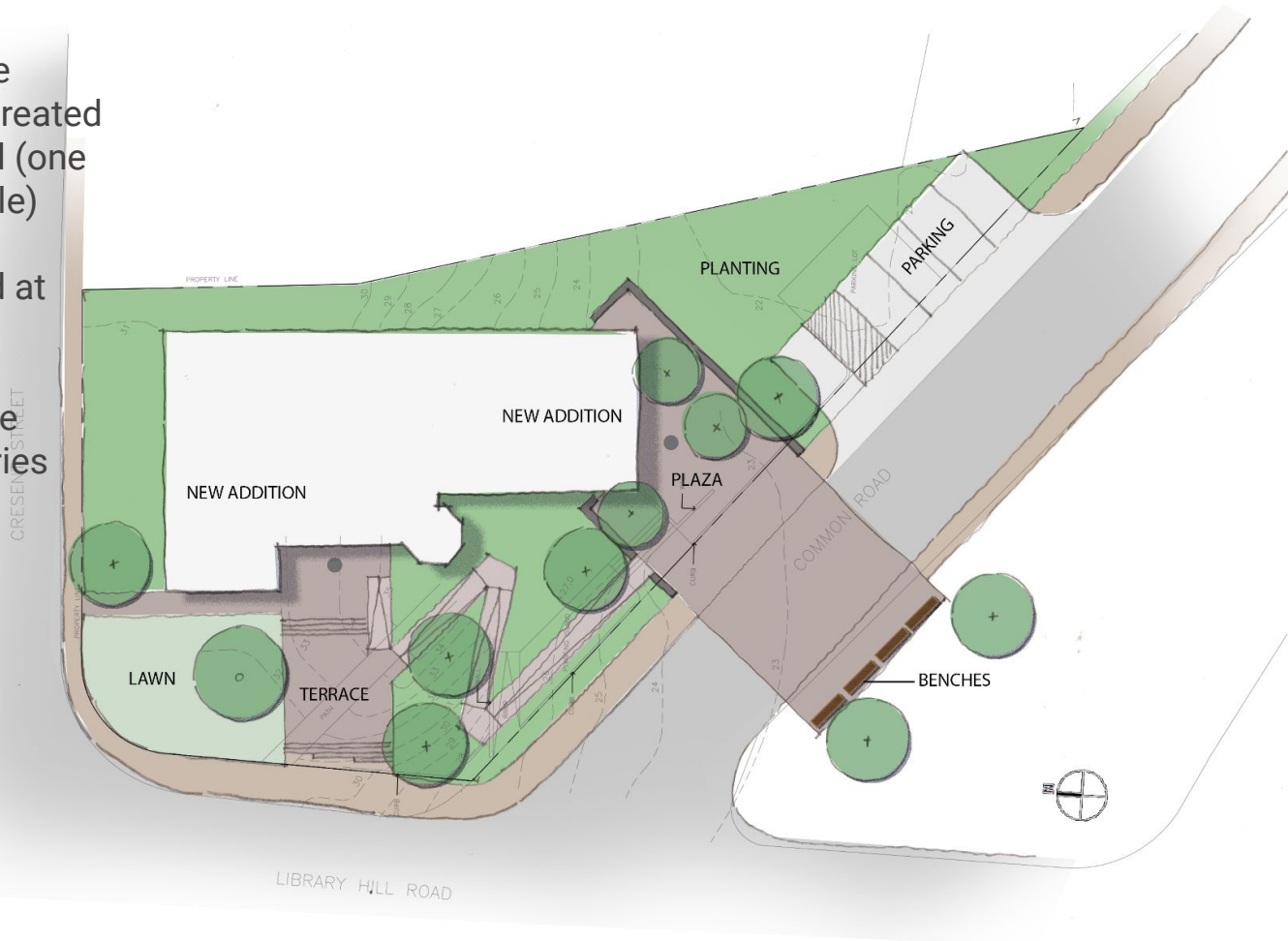
- Review Updated Landscape Strategies + Precedents
- Review Updated Building Program
- Review Updated Plan Options

Discussion + Next Steps (15 min)

PREVIOUS CONCEPT DESIGN

SCHEME C

- 1970s building additions are removed, a new wing(s) is created
- Common Street is narrowed (one way drive lane + parking aisle)
- Historic entry is re-opened
- Large social spaces created at both entries, for library and community programming
- Accessible path on the slope connects the 2 building entries



OPPORTUNITIES



CONSTRAINTS

- 11-12' grade change in a limited space
- Site has many “fronts” to it.

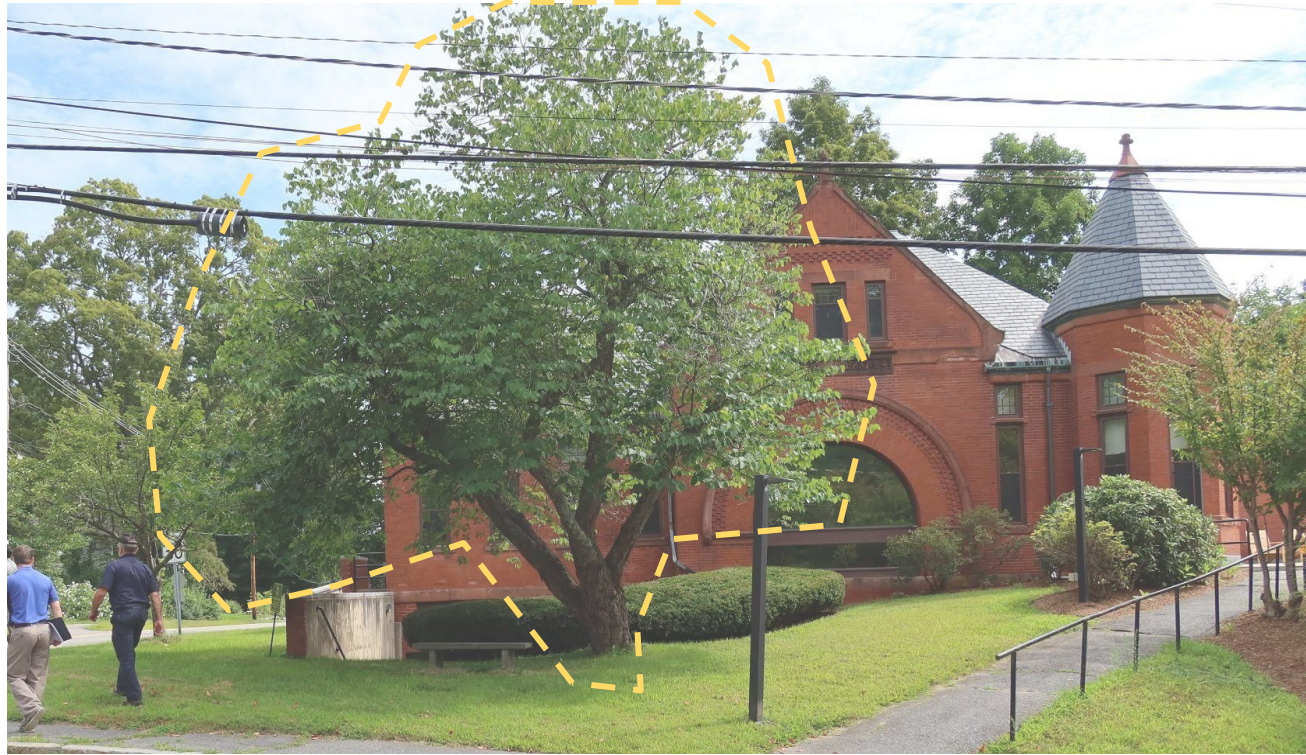


LANDSCAPE- QUESTIONS + GOALS FOR TODAY

1. Previous feedback:
 - a. Redbud tree to be protected.
 - b. Garden club is active and should have continued involvement.
 - c. Children's story time will be main outdoor program.
2. Program review- are there major program components that have not yet been discussed that you would like to see?
3. Initial reactions to site circulation options? Importance of accessible connection from new entrance to old entrance?
4. Initial reactions to precedent image ideas?

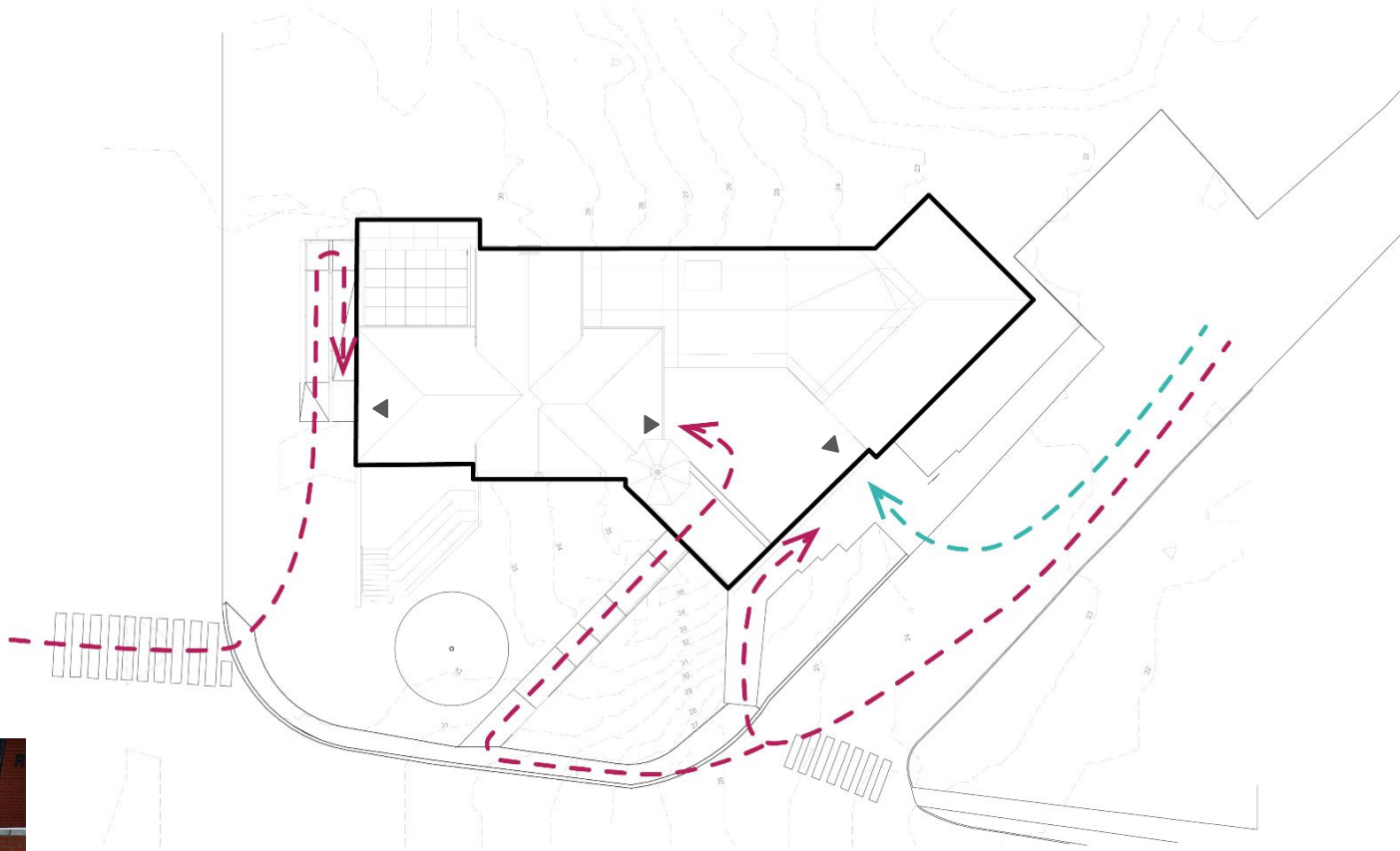
REDBUD PRESERVATION

- Consulting arborist for initial Visual Assessment
- General health and viability of the redbud
- Construction tolerance and recommendations for pre-construction care
- Future consultation on construction details and protocols



SITE DIAGRAMS

EXISTING CIRCULATION



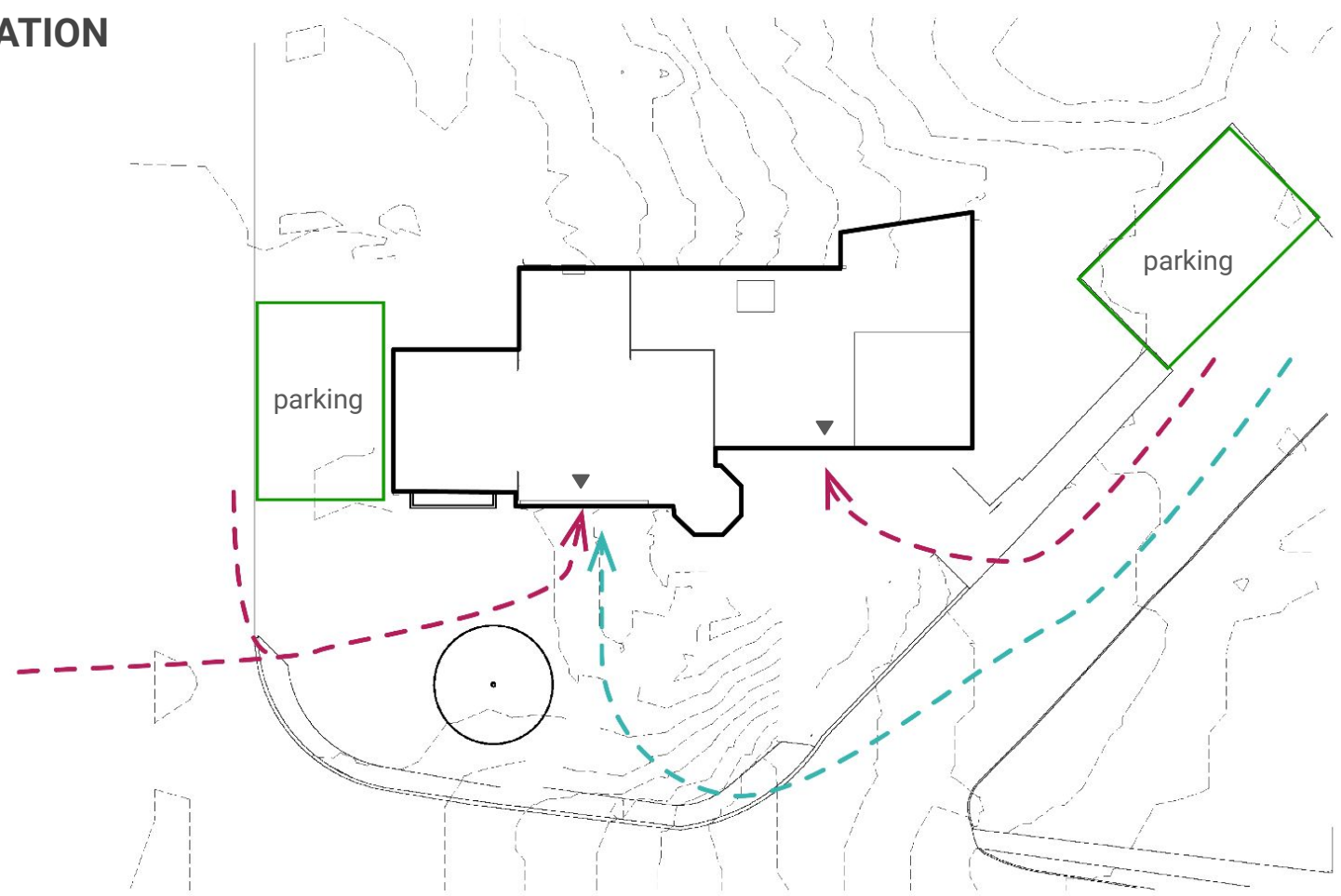
Non-accessible route



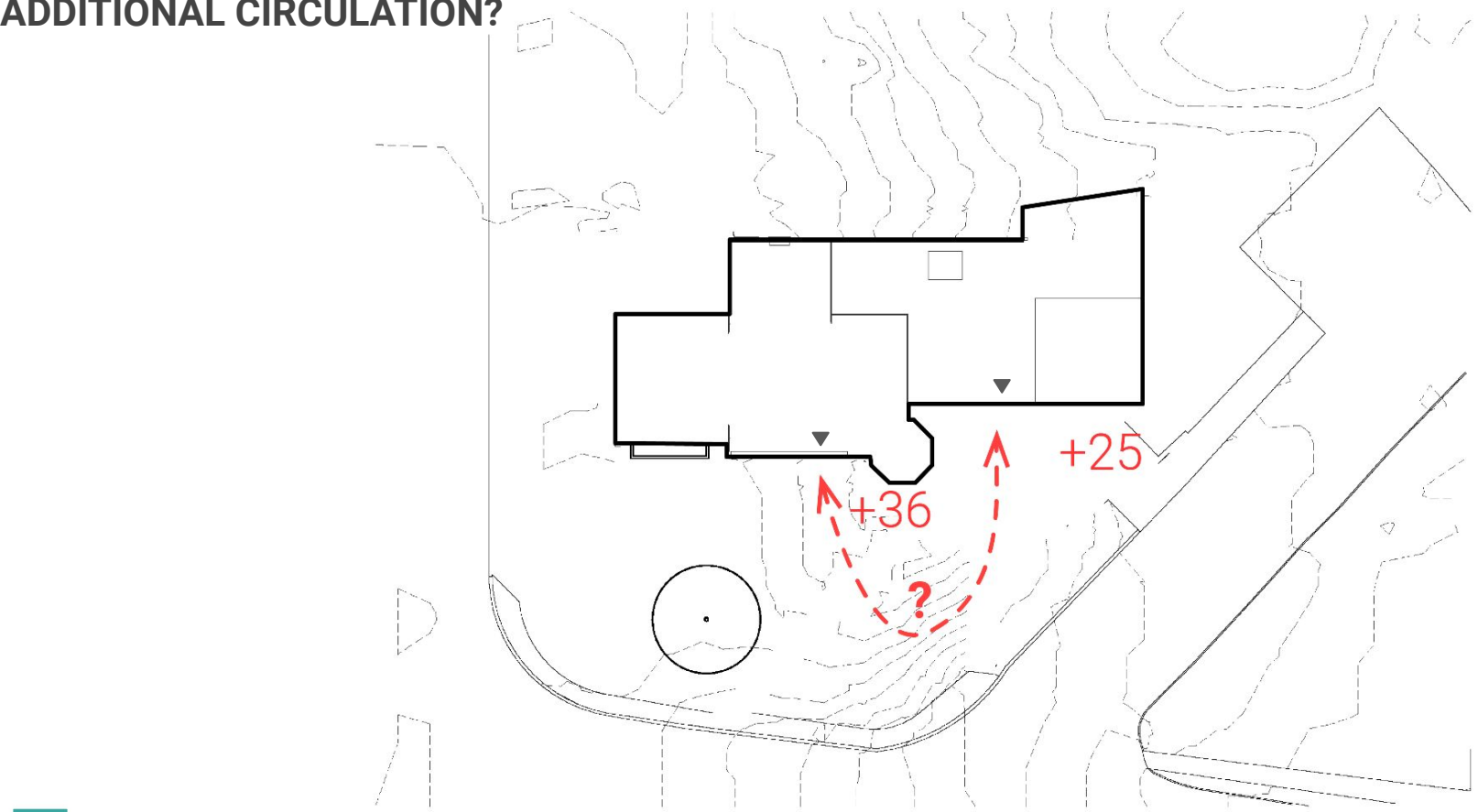
ADA accessible route

PROPOSED CIRCULATION

- Non-accessible route
- ADA accessible route



ADDITIONAL CIRCULATION?



- Non-accessible route
- ADA accessible route

220' at 5% (no handrails) _____

138' at 8% (handrails) _____

EXISTING GRADE CHANGE

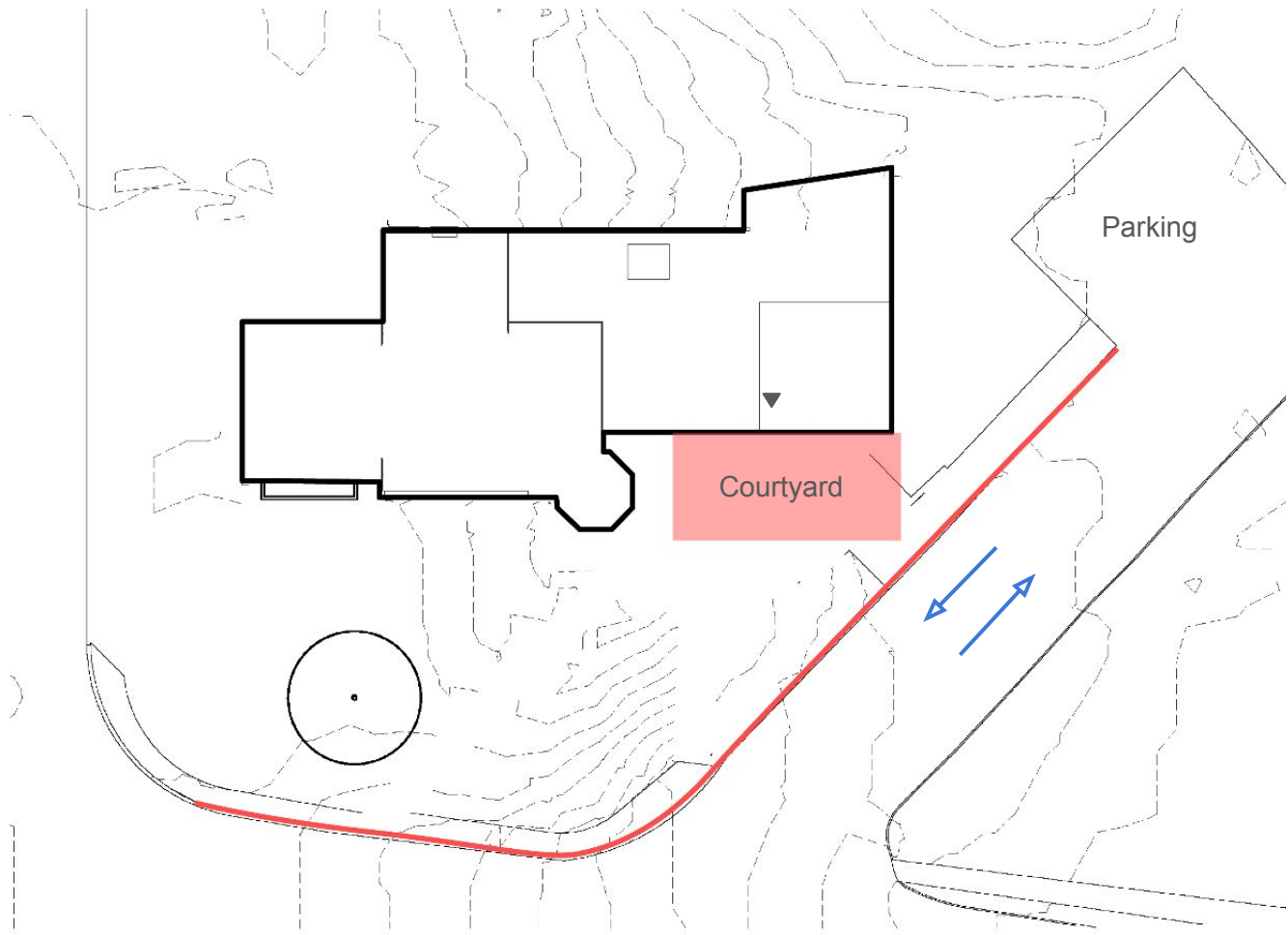


EXISTING FFE ~ +36'

PROPOSED COURTYARD ~ +24-25'

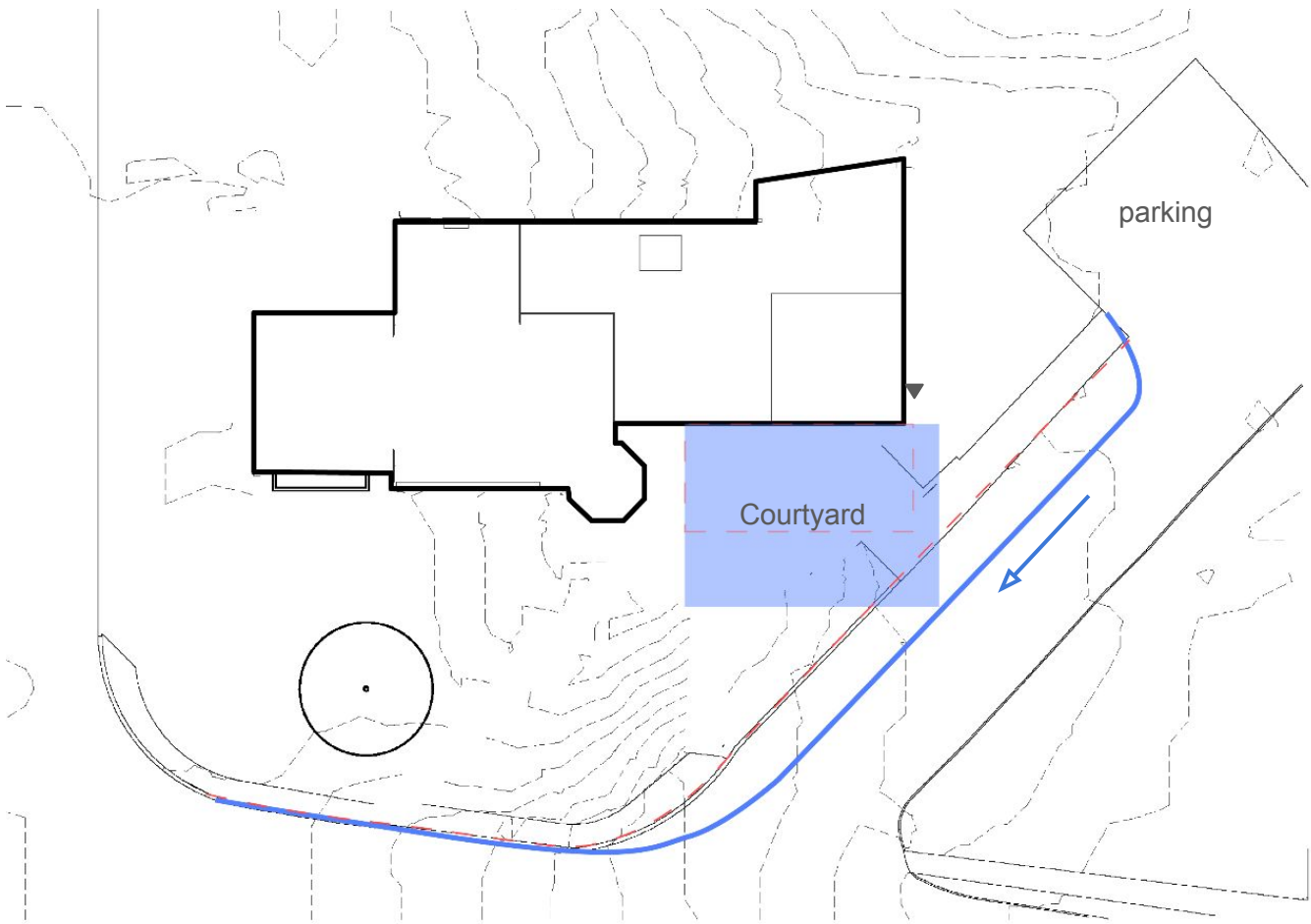
COMMON ROAD- COURTYARD DESIGN IMPACT

Two-way



COMMON ROAD- COURTYARD DESIGN IMPACT

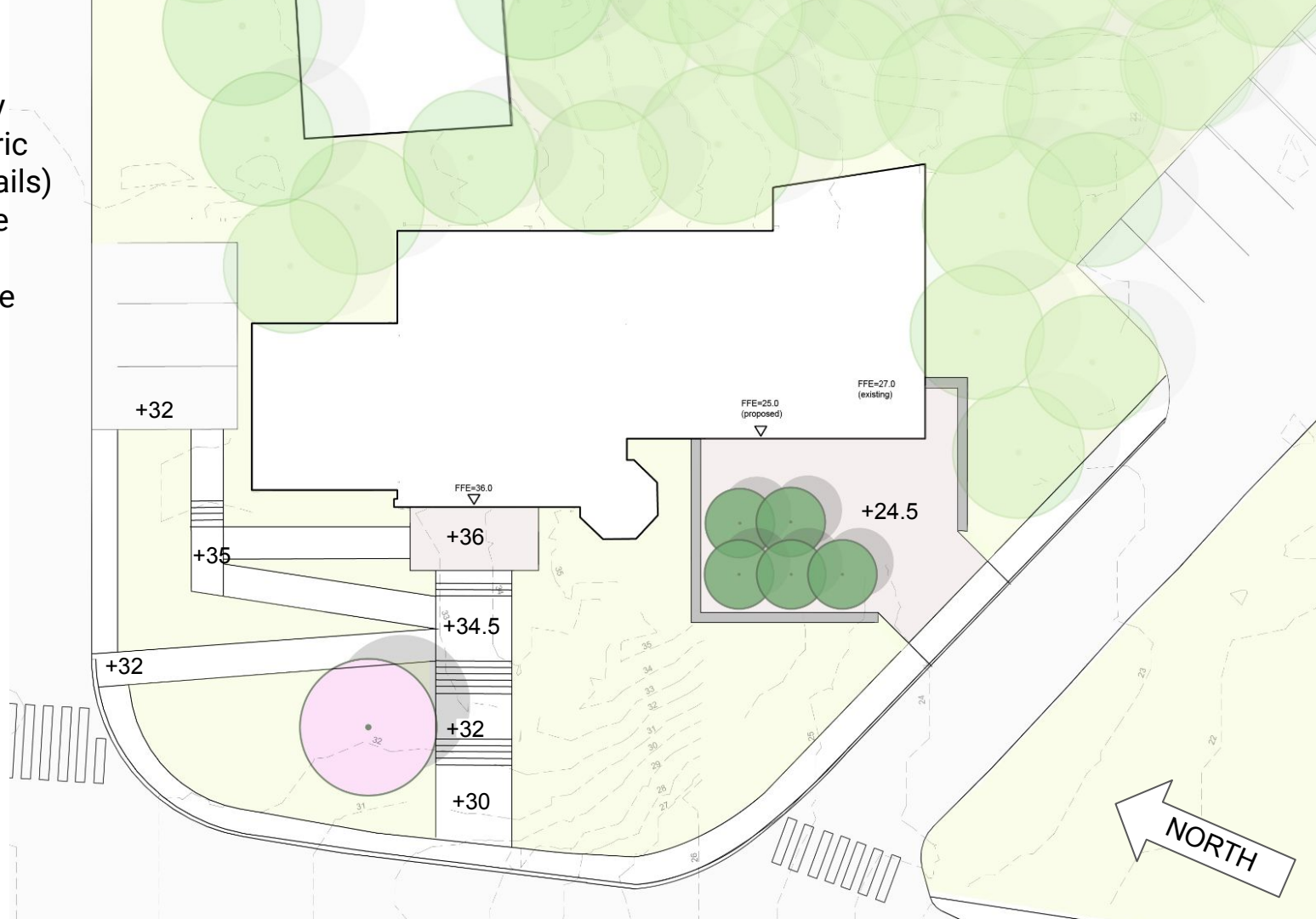
One-way



INITIAL SITE SCHEMES

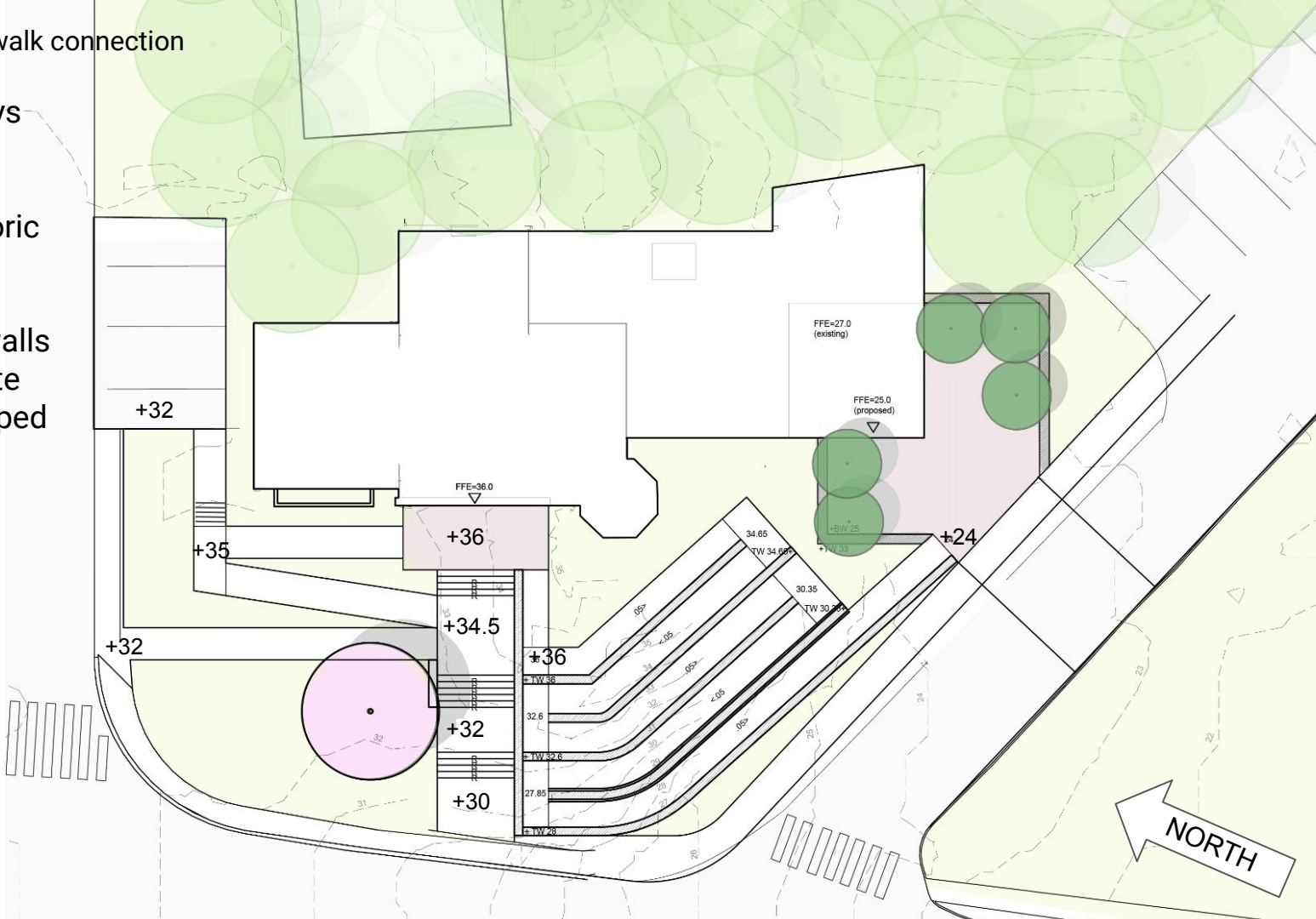
SCHEME B

- Sloped walkway access to historic entry (no handrails)
- Walkways to the north of the historic entrance allow for more gentle grades sitewide



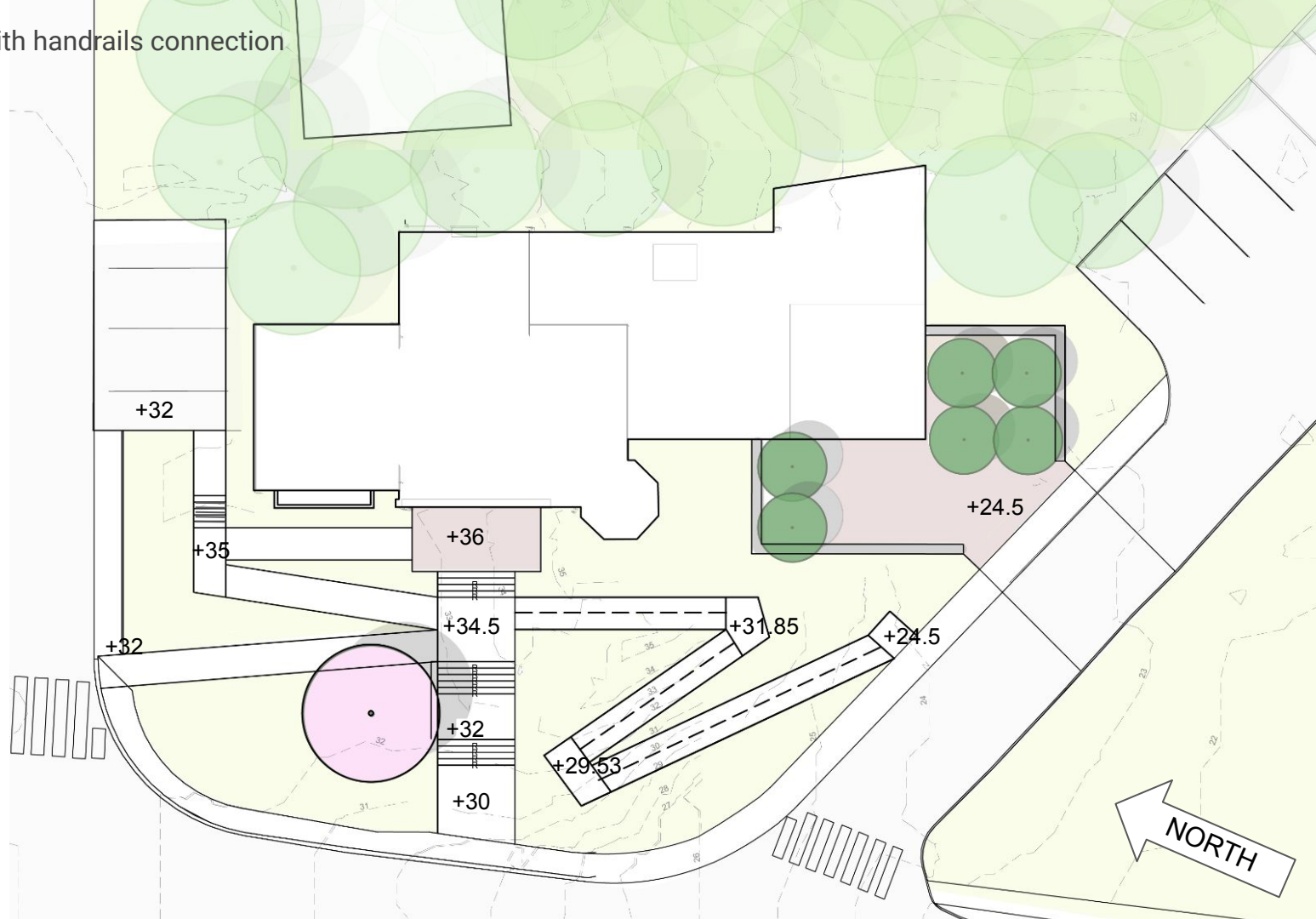
SCHEME C- Sloped walk connection

- Sloped walkways (no handrails) connect new building to historic entry
- Hillside is filled with retaining walls to accommodate 220'-240' of sloped walk



SCHEME D- Ramp with handrails connection

- Ramp with handrails takes less space but has aesthetic drawbacks
- Requires low walls and curbs for grading in slope



HISTORIC BUILDING + SITE

- Steps at main entrance
- Gentle slope transition to Common Rd



EXISTING GRADING AT TURRET





PRECEDENT IMAGES

HISTORIC ENTRY-

terraces/landings as social spaces



HISTORIC ENTRY-
trees + seating at
entrance



STEPS AS SEATING



COURTYARD-

trees + seating



COURTYARD- trees
+ seating



COURTYARD-
retaining wall



COURTYARD- trees in paving

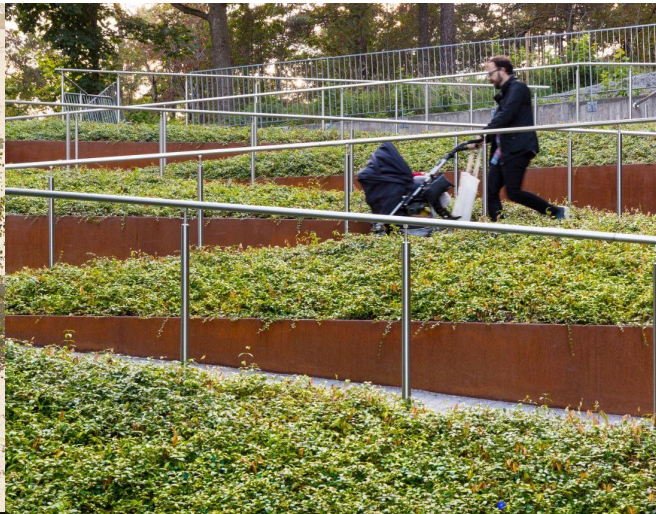


COURTYARD-

trees + boulder
seating



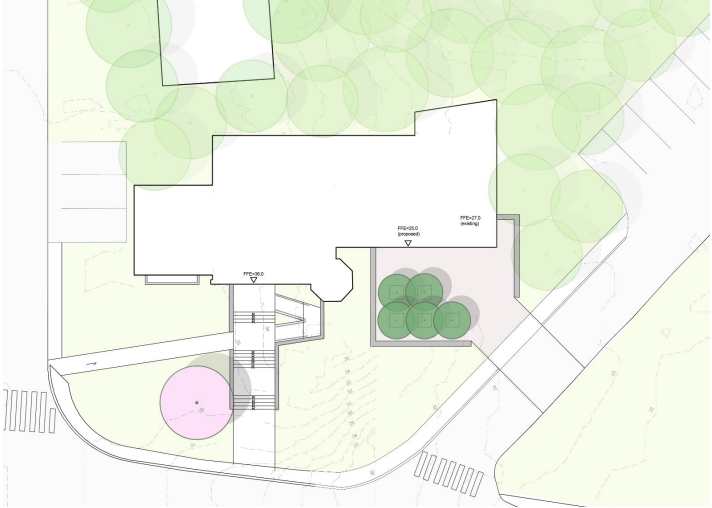
SLOPED WALKWAY



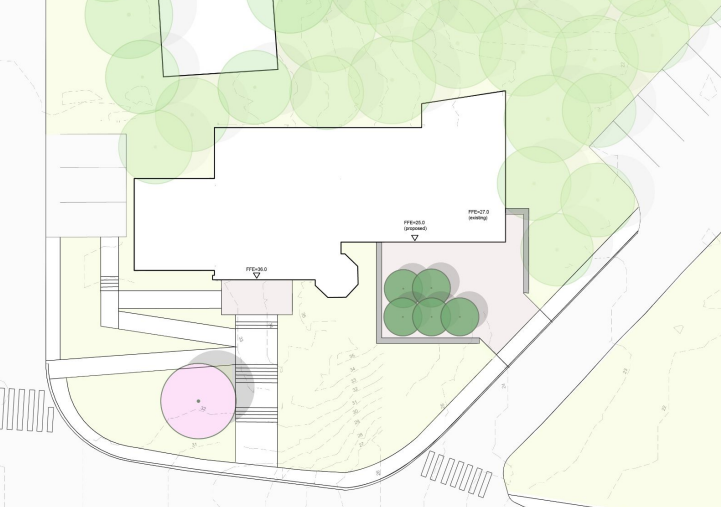
LANDSCAPE- QUESTIONS + GOALS FOR TODAY

1. Previous feedback:
 - a. Redbud tree to be protected.
 - b. Garden club is active and should have continued involvement.
 - c. Children's story time will be main outdoor program.
2. Program review- are there major program components that have not yet been discussed that you would like to see?
3. Initial reactions to site circulation options? Importance of accessible connection from new entrance to old entrance?
4. Initial reactions to precedent image ideas?

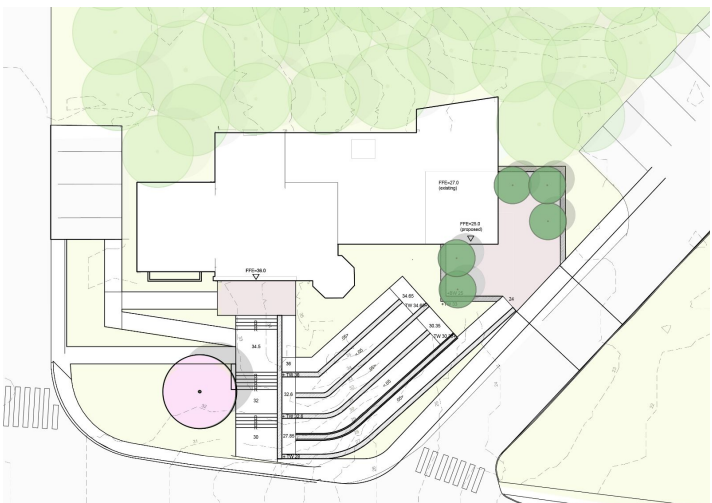
SCHEME A



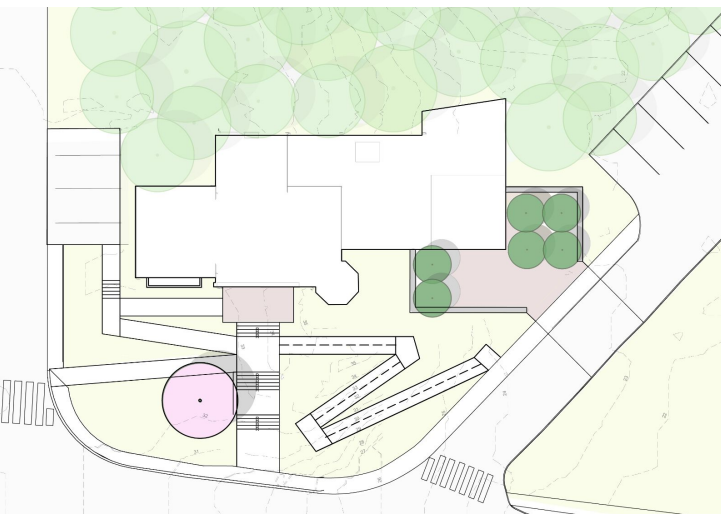
SCHEME B



SCHEME C

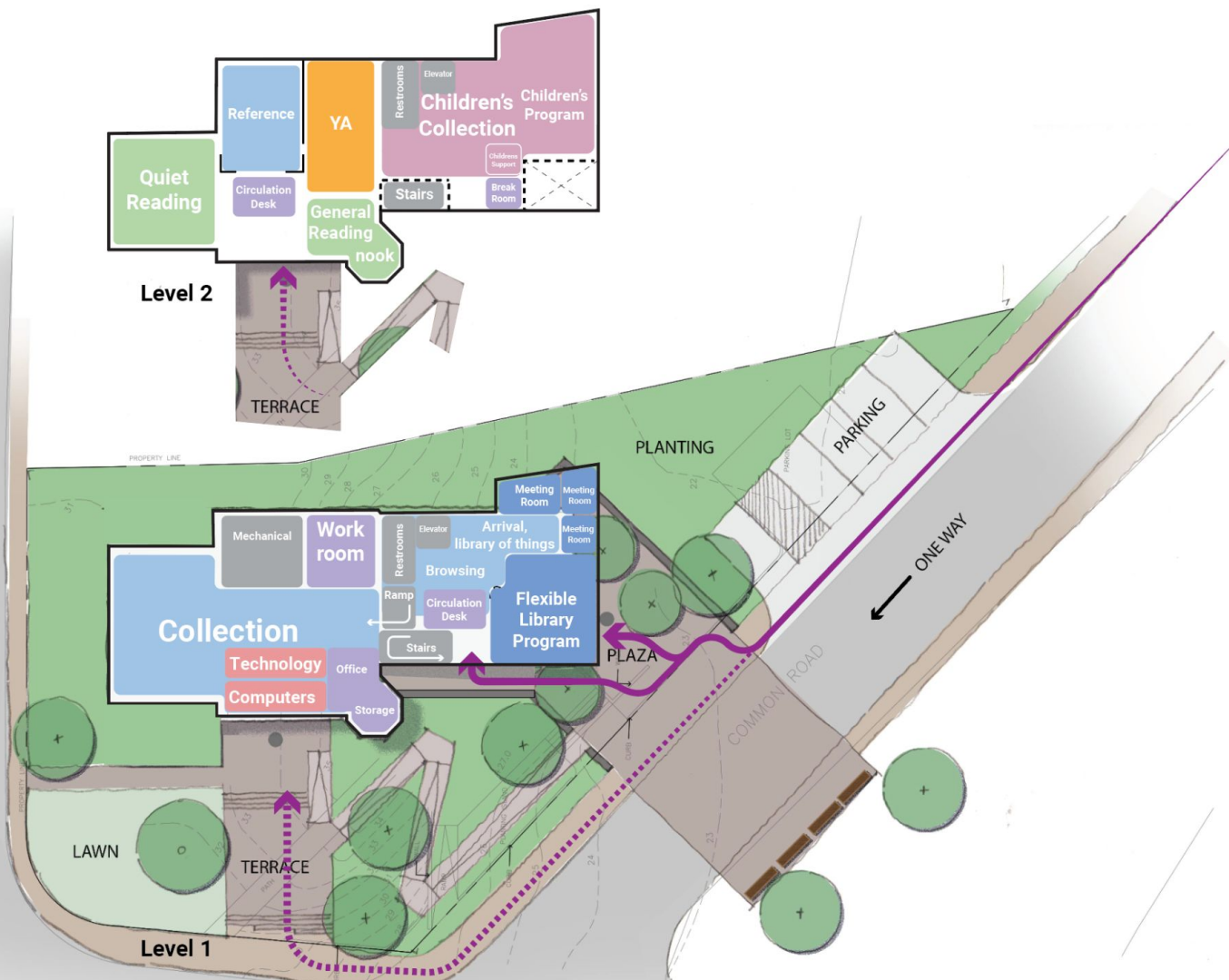


SCHEME D



Original Concept Plan

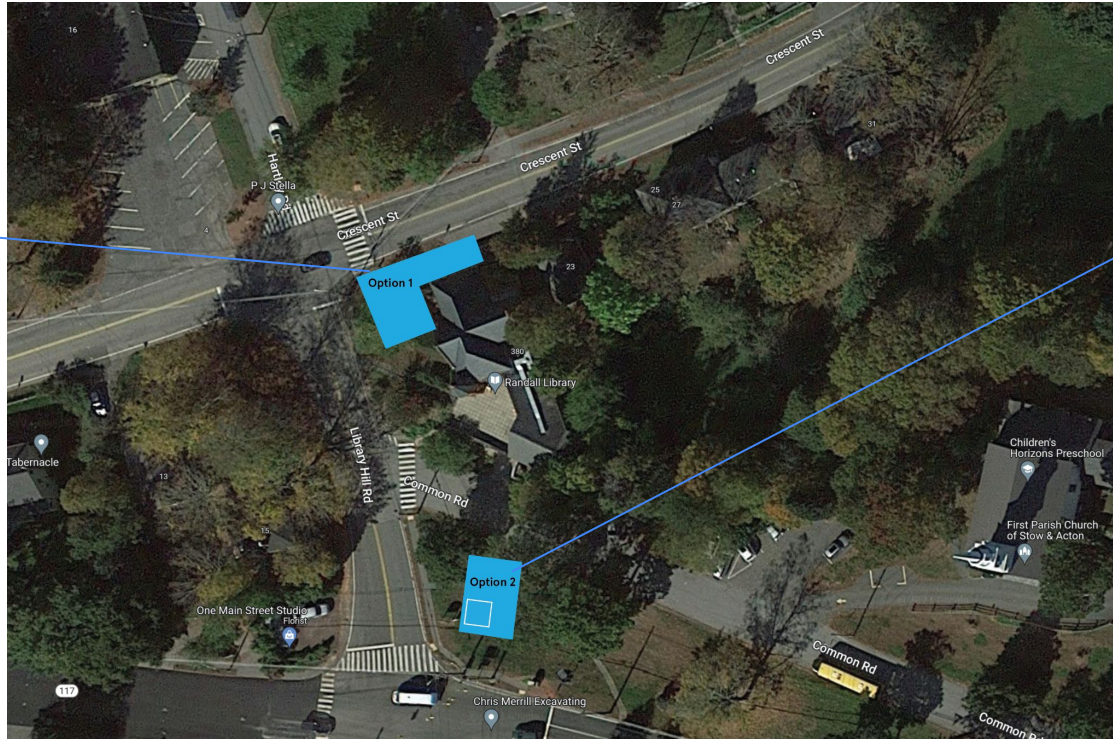
CRESSENT STREET



Floor Plan and Program Updates

Option 1

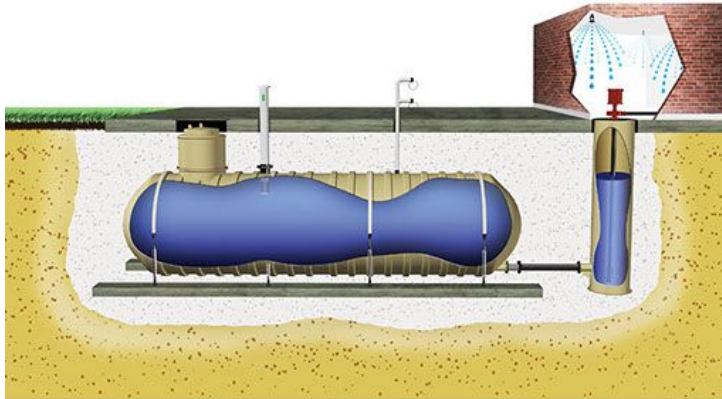
- Buried cistern on the crescent street side of the site w/ internal electric fire pump (requires diesel generator).
- Requires 28' of elevation change from grade to floor of fire pump room...



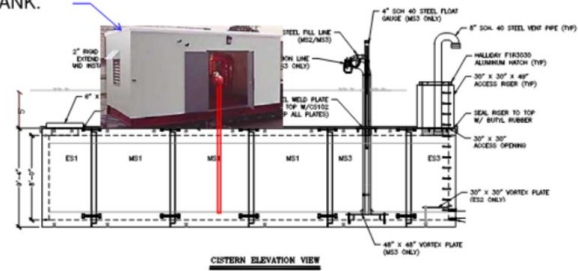
Option 2

- Buried cistern w/ vertical turbine fire pump that requires dedicated headhouse potential on crescent street or, town common but that location is challenging due to septic system and war memorial

Technical drawing of a fire pump installation showing a cross-section of a wall and floor. The drawing includes various components like pipes, valves, and structural elements, all labeled with dimensions and specifications. A red line indicates the fire pump supply line. A note on the right side reads: "FIRE PUMP IN LIBRARY FIRE PUMP ROOM". A small red fire pump icon is shown at the bottom right.



FIRE PUMP
HOUSE /
STRUCTURE ON
TOP OF TANK.



Staff Feedback

Meeting Rooms

- **3+** Small Rooms for tutors and clubs to meet simultaneously
 - 5-7 People
 - Knitting Club
 - Lego Club
 - Book Club
 - Puzzle Club
- **1** Large Flexible space for up to 30-40
 - Ghost
 - Trivia
 - Cookbook Club

Staff Space

- Storage
- Processing Space
 - Dedicated space
 - Could be behind circ. desk
- Work Room
 - Accessible from circ. Desk
- 2 Staffed Desks

Collection

- 30,000 Volumes
- 2,000 Video
- Library of Things
 - Requires storage and display
- Will remain same size

Teen Space

- Audible Separation
- Visual Supervision
- 2:00-5:00, Arriving from middle school
- Programs
 - Hangout
 - Video games
 - Study
 - Eat
- Enter from upper level
- Two spaces
 - Quiet space
 - Activity Space

Reading

- Not adjacent to children's or YA
- Combine with reference
- Adjacent to computers
- Special Collections
- Audio
- Periodicals

Childrens

- Small storytime
- Prep staging and storage
- Table space
- No separate program space
- No office required

Site

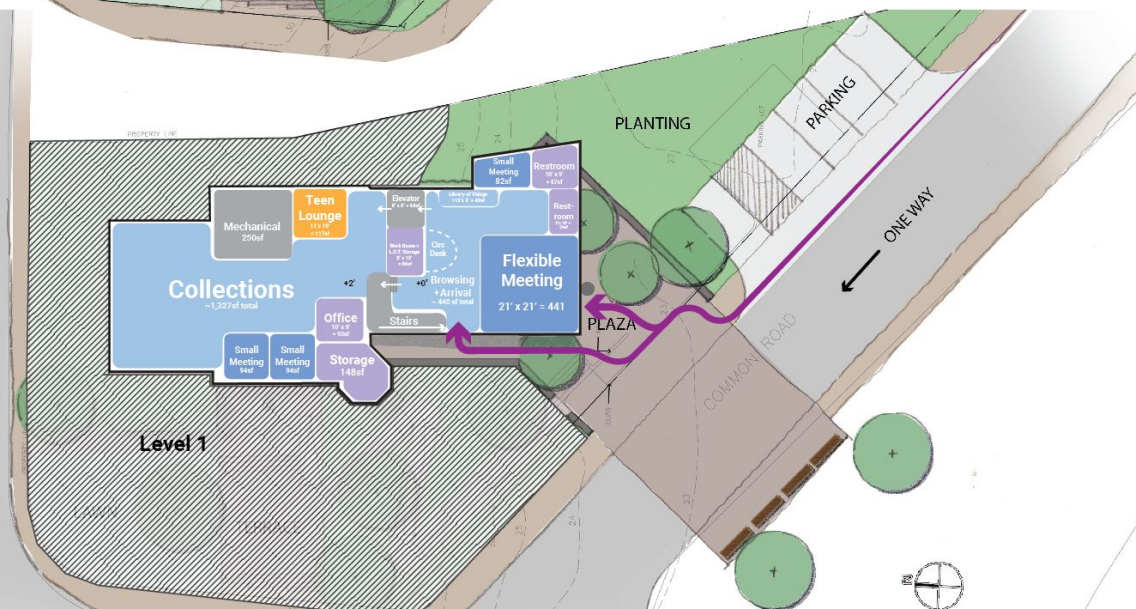
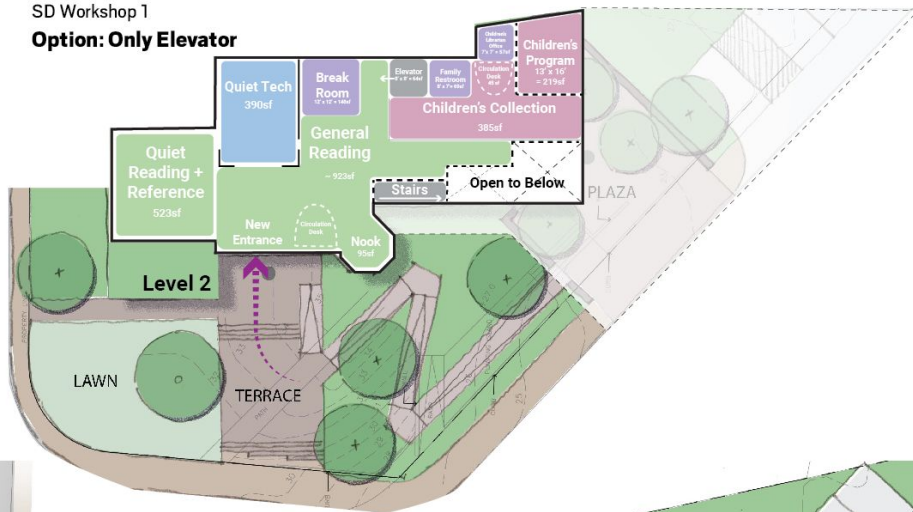
- Keep the "Purple Tree"
- Garden Club needs small space to maintain
- Story time will be the main outdoor program
- Parking
 - Need as many as possible
 - 5 Min spot for book drop
- 2 Entrances
- Dumpster off of Crescent
- One-way street towards Great Rd

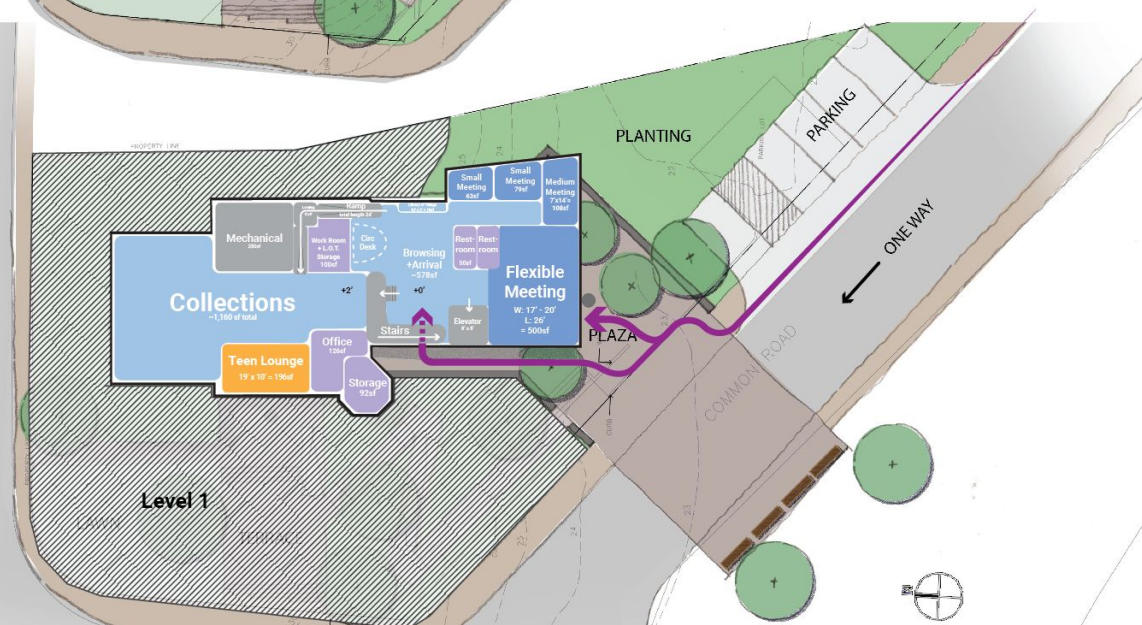
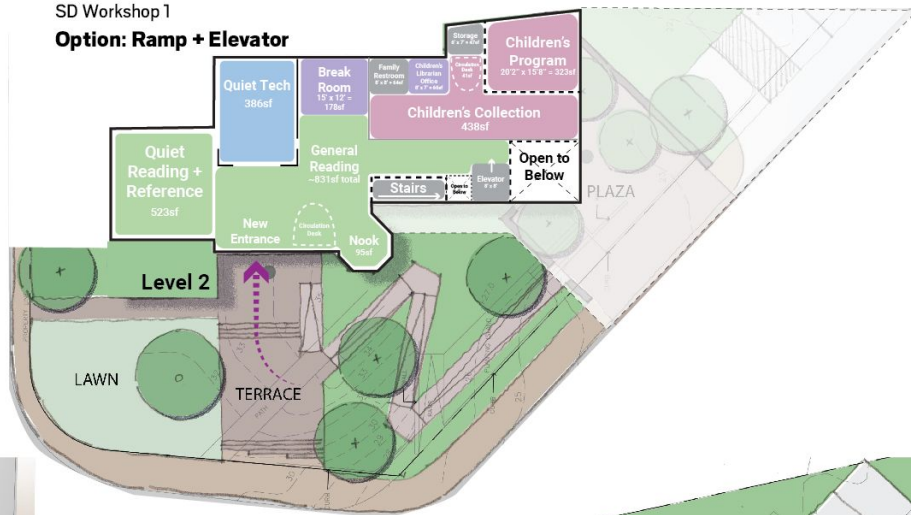
Program Statement

	Existing, Increase or New Program Space	Existing Net Assignable Square Footage (NSF)	Proposed Gross Square Feet (GSF)	Notes	MEFPF
LIBRARY SUPPORT SPACES					
Circulation Desk	Increase	246 SF	+ TBD Increase	adjacent to work room	
Work Room	Increase	183 SF	+ TBD Increase	Processing required	
Director's Office	Existing	95 SF	+ TBD Increase		
Break Room	New	n/a	TBD SF		
Processing Space	New	n/a	TBD SF	Potential to be within Work Room depending on Work Room location and layout	
Sub-TOTAL		524 SF	TBD SF		
COLLECTION					
General Collection	Increase	1397 SF	+ TBD Increase	roughly 30k volumes	
Library of Things	New		TBD SF	display and storage	
Browsing Collection	Additional	n/a	TBD SF		
Reference	Existing	867 SF	867 SF	to be combined with general reading	
Sub-TOTAL		1397 SF	TBD SF		
READING					
General Reading	Increase	669 SF	+ TBD Increase	Potential to Increase, further evaluation required. May be incorporated into Circulation SF	
Quiet Reading	New	n/a	TBD SF		
Sub-TOTAL		669 SF	TBD SF		
YOUNG ADULT					
Collection	Increase	330 SF	+ TBD Increase	1653 volumes	
Browsing	New	n/a	TBD SF		
Gathering	New	n/a	TBD SF	Potential to be multi-purpose with other Meeting Room / Gathering needs	
Technology	New	n/a	TBD SF	Potential to be multi-purpose with other Technology needs	
Sub-TOTAL		330 SF	TBD SF		
CHILDREN'S					
Collection	Increase	735 SF	+ TBD Increase	12,249 volumes	
Program Room	Increase	330 SF	+ TBD Increase	does not need to be separate from collection	
Support Space	New	n/a	TBD SF		
Sub-TOTAL		1065 SF	TBD SF		
TECHNOLOGY					
Computer Space	Increase	200 SF	+ TBD Increase	Historic Building	
Sub-TOTAL		200 SF	TBD SF		
MEETING SPACE					
Entry hall/Meeting Room	Existing	180 SF	180 SF	New program	
Rear Meeting Room	Existing	321 SF	321 SF	Flexite	
West Meeting Room	Existing	508 SF	508 SF	New program	
Small meeting rooms	New	n/a	80-100 each		
Flexible Meeting space			400		
Sub-TOTAL		1009 SF	TBD SF		
BUILDING SUPPORT					
Restrooms	Increase	130 SF	130 SF	2 restrooms	
Mechanical	Increase	280 SF	+ TBD Increase		
Electrical Room	New	n/a	TBD SF		
Elevator	New	n/a	TBD SF		
Sub-TOTAL		410 SF	TBD SF		
LANDSCAPE					
Parking			TBD		
Accessible Entry			TBD		
Program Space			TBD		
TOTAL		5604 SF	TBD SF		

Previous Notes

- The library should be as accessible as possible. A ramp and 3-stop elevator should be available.
- There should not be a separate entrance for the flexible meeting room
- The teens may want access to the exterior.
- Teens will mostly enter from the historic entry, Teen space will not want to be next to or within children's space.

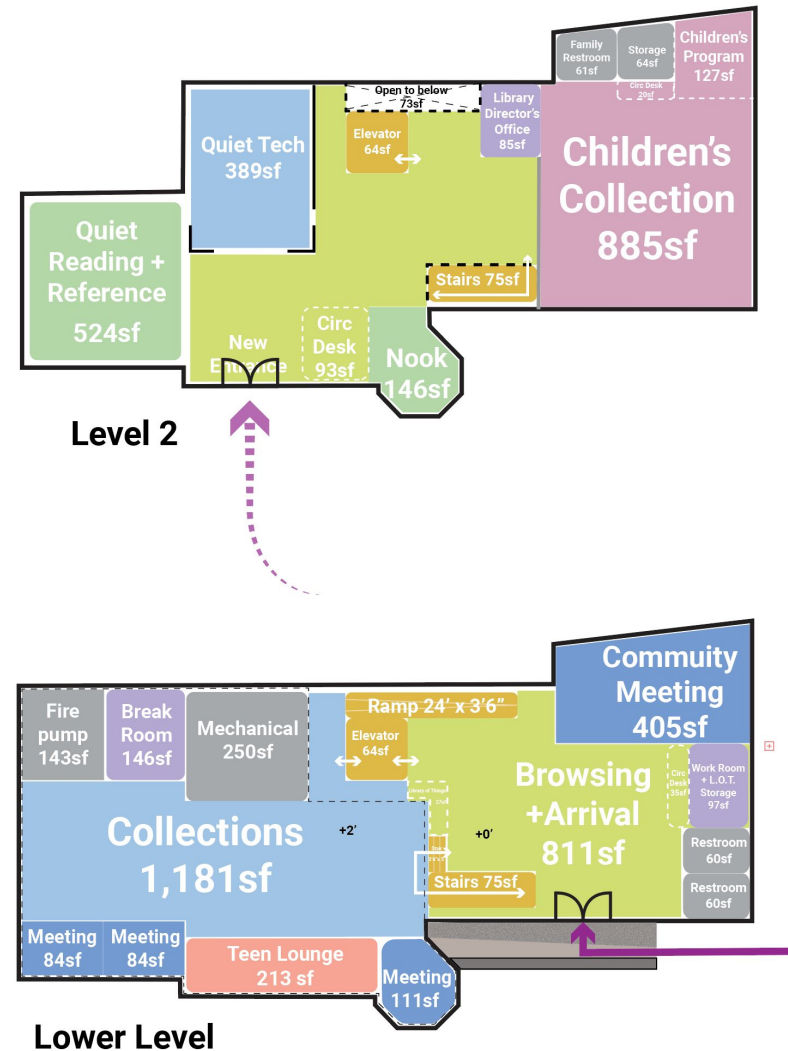
Option: Only Elevator**Concept Plans**

Option: Ramp + Elevator**Concept Plans**

- **Desirable Lower Level Program**
- **Stair/Elevator/Ramp Layout**
- **Browsing and Arrival Size**
- **Meeting Room arrangement**

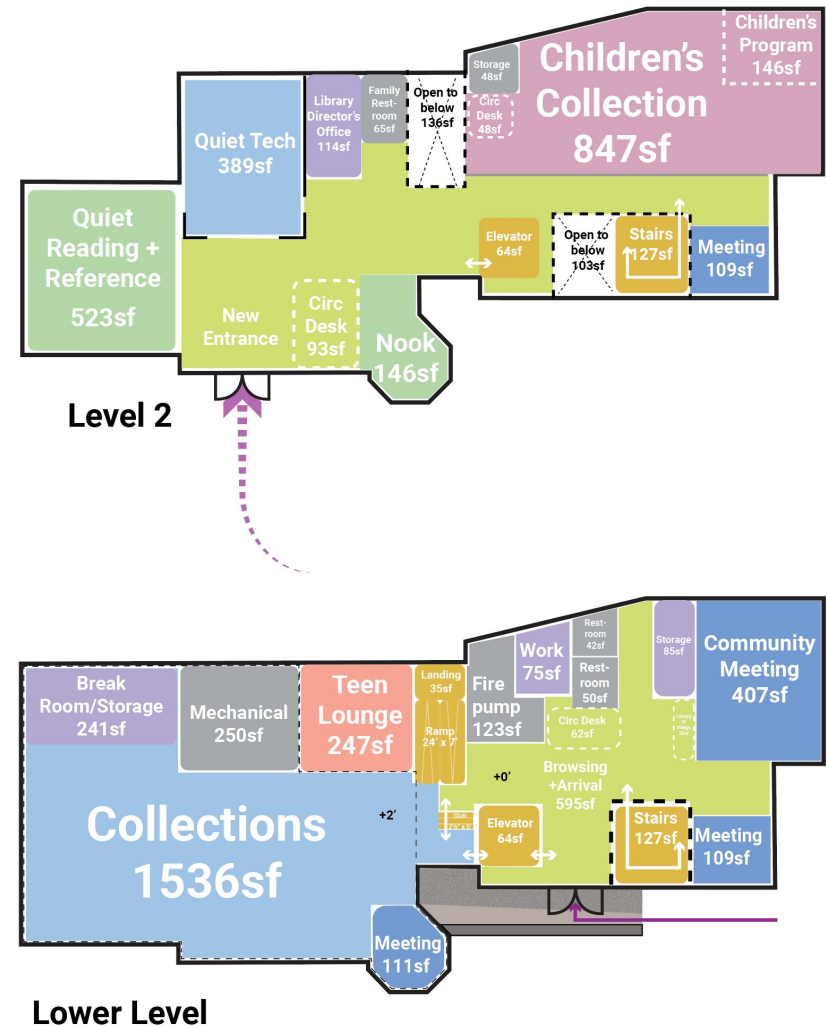
Option 1

- Large **Browsing and Arrival**
- Program space in **Collection**
- Fire pump room in old building
- **Straight ramp**
- Program on exterior walls
- **Meeting Room** Security (after hours)
- Simplified Massing
- **Teen Lounge** in Collections

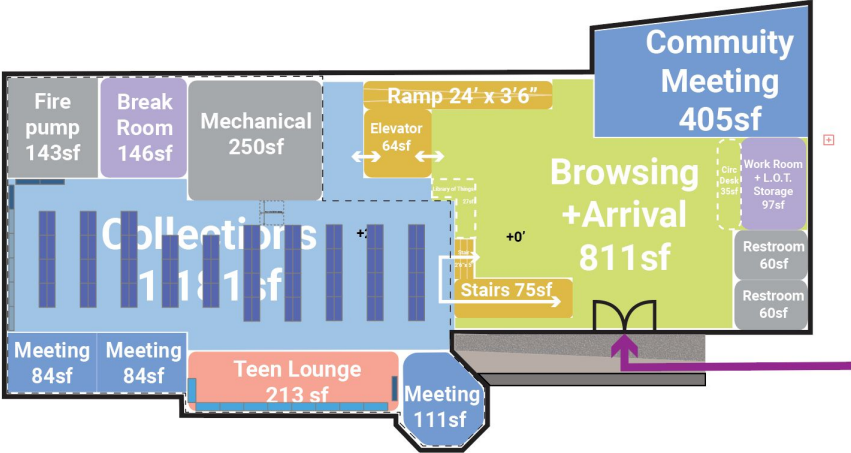


Option 2

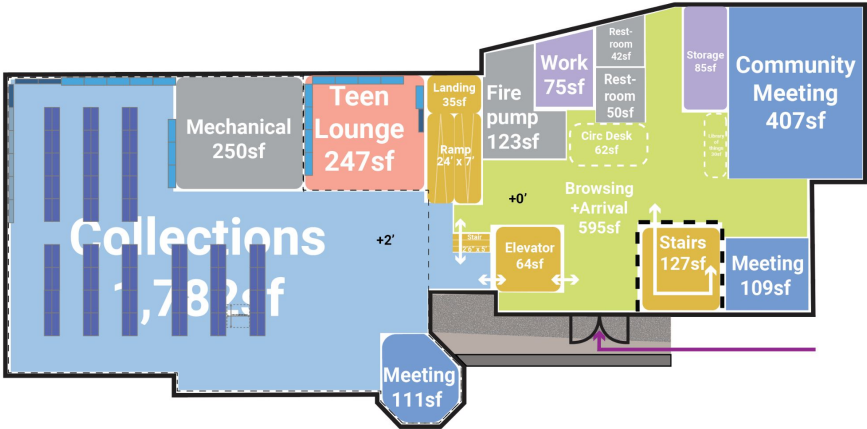
- Less **Browsing**
- Larger **Collection**
- Fire pump room in addition
- **Condensed Circulation (Ramp)**
- Views out
- Simplified Massing
- **Teen Lounge** close to Browsing



Option 1

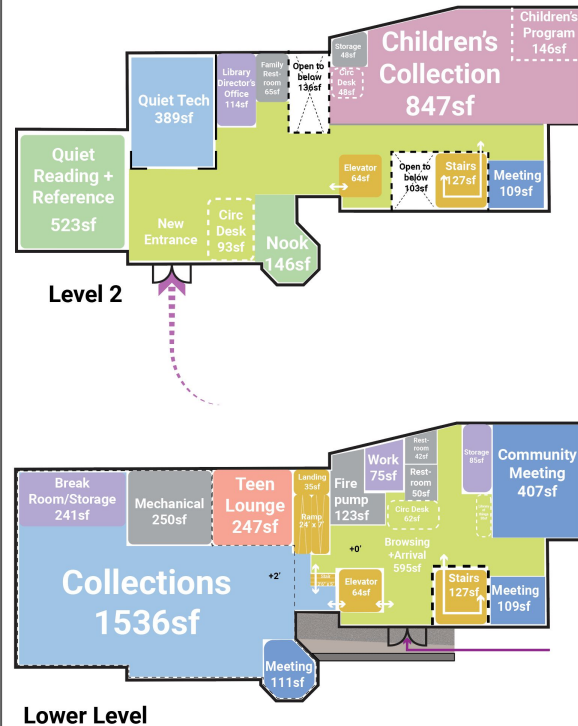
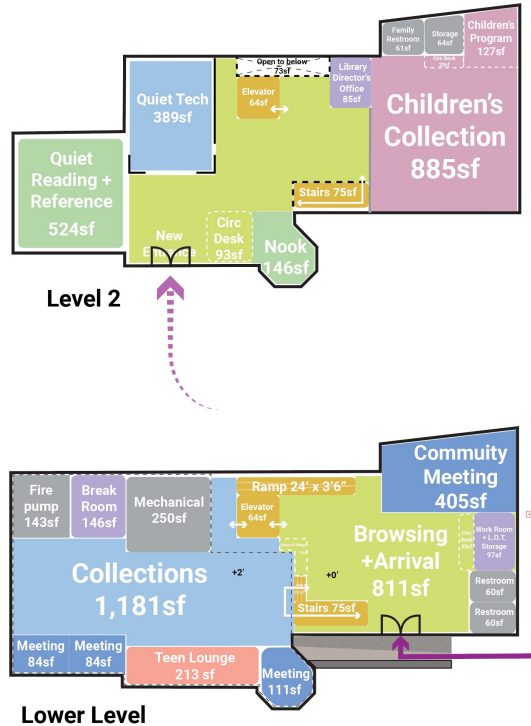


Option 2



Option 1

- Large **Browsing and Arrival**
- Program space in **Collection**
- Fire pump room in old building
- **Straight ramp**
- Program on exterior walls
- **Meeting Room** Security (after hours)
- Simplified Massing
- **Teen Lounge** in Collections



Option 2

- Less **Browsing**
- Larger **Collection**
- Fire pump room in addition
- **Condensed Circulation (Ramp)**
- Views out
- Simplified Massing
- **Teen Lounge** close to Browsing

Today's Agenda

Introductions (10 min)

- Review Work Plan + Process Updates

Exterior Committee (30 min)

- Review Goals + Guiding Principles
- Review Existing Building Analysis + Material Palette Options
- Discuss Potential Field Trip Locations

Building Committee (60 min)

- Review Updated Landscape Strategies + Precedents
- Review Updated Building Program
- Review Updated Plan Options

Discussion + Next Steps (15 min)

Next steps:

- WS3
- schedule field trips
- Schematic Design Drawings
 - Estimate
- Design Development Phase

End

South Providence Library

- Probably don't need this next section/sequence? Keep in back to refer to if needed?



Hyde Park Library



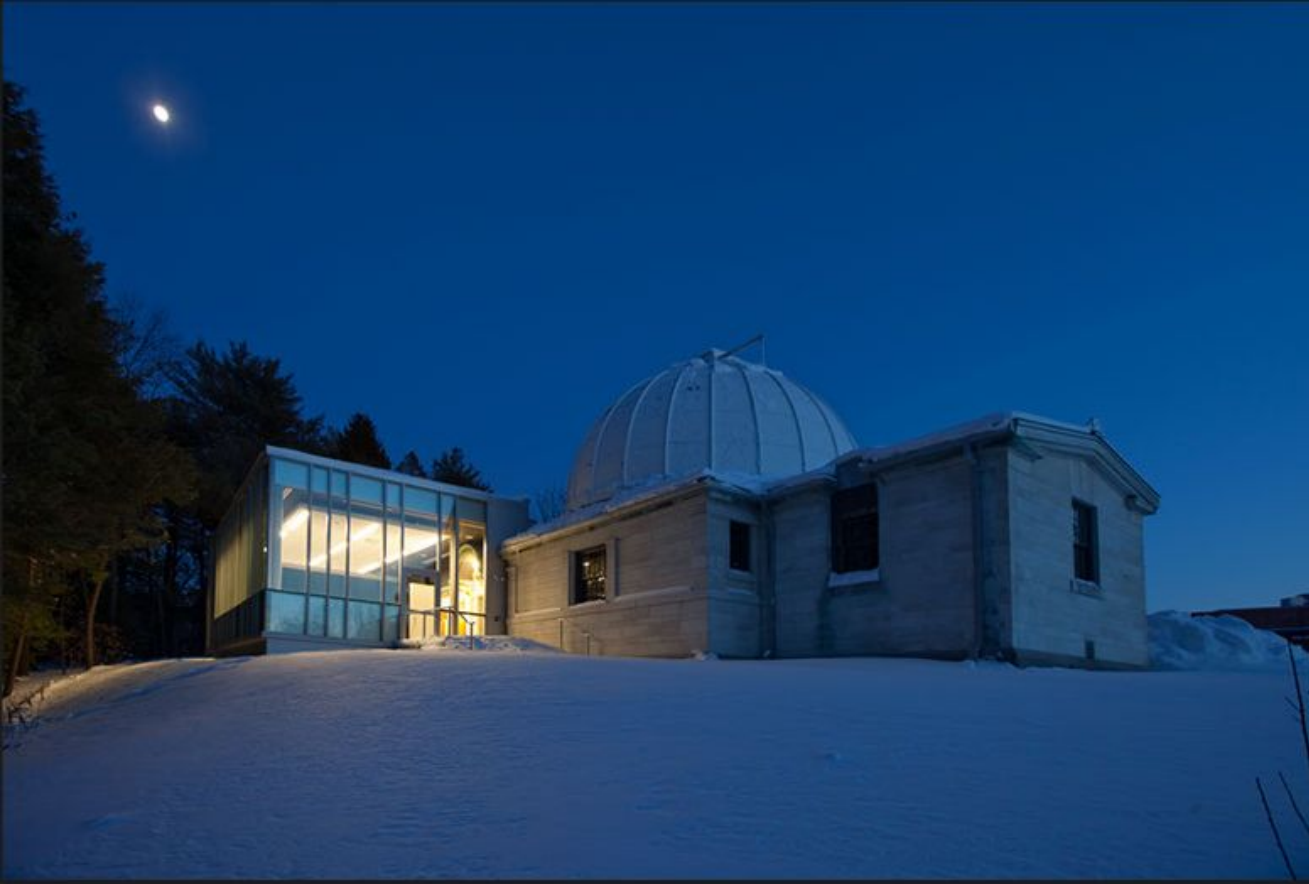
Walnut Hill Arts Center



Rasmussen Education Center

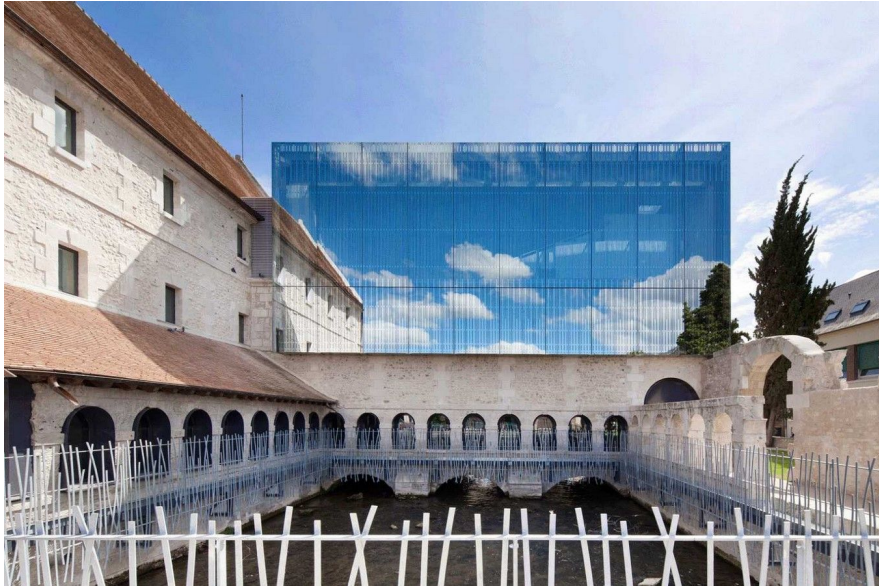


Whitin Observatory



West Branch Library





Louvre Music Building



Medieval Mile Museum

Palette + Composition

