

RANDALL LIBRARY PRELIMINARY DESIGN SUMMARY

TOWN MEETING - 7/26/2023

CONSTRUCTION DOCUMENT WORKSHOP 7

STOW, MA



designLAB architects

G2 G2 COLLABORATIVE
LANDSCAPE ARCHITECTURE

RANDALL LIBRARY PRELIMINARY DESIGN SUMMARY

TOWN MEETING - 7/26/2023

CONSTRUCTION DOCUMENT WORKSHOP 7

STOW, MA

designLAB architects Team:

Ben Youtz, Partner

Andrew Brookes, Architect

Audrey Scanlon, Designer

G2 Collaborative Team:

Gigi Saltonstall

Alison Goyer

Consultants:

Fitzmeyer + Tocci Associates

RGE Structural Engineers

Nitsch Engineers



designLAB architects



G2 COLLABORATIVE
LANDSCAPE ARCHITECTURE

Today's Agenda

Introduction

- Review Work Plan + Process Updates

Building Systems Updates

Interior Characteristic

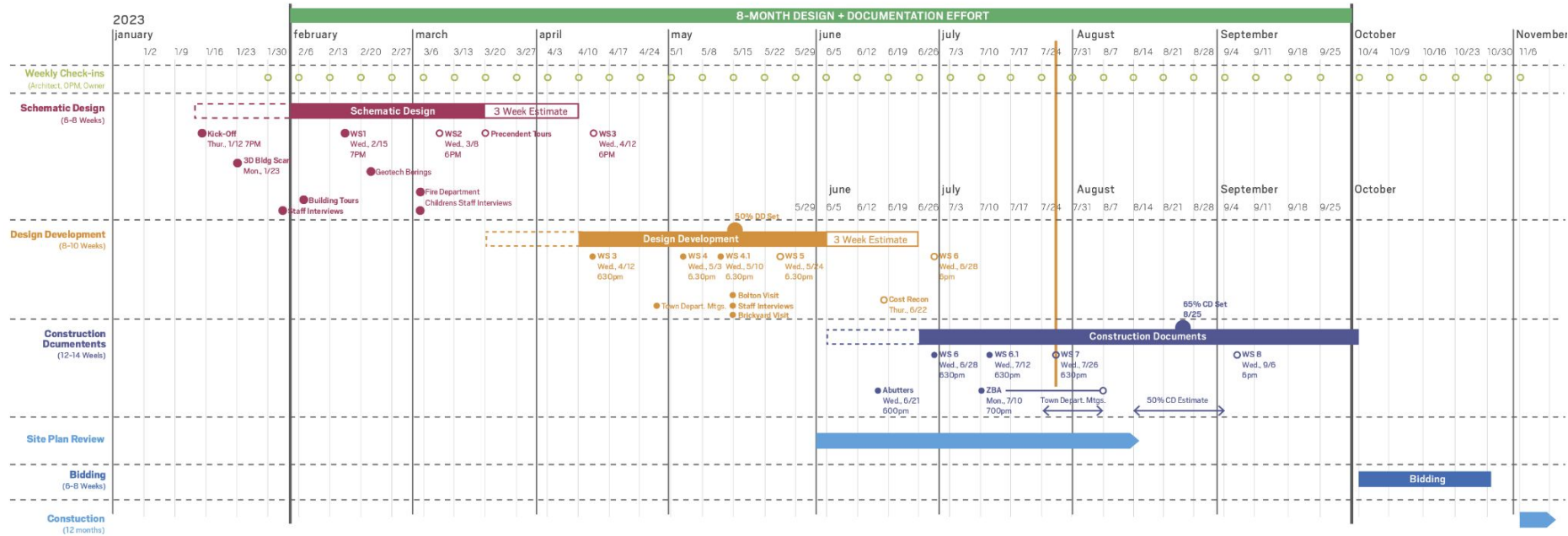
Exterior Characteristic

Landscape Update

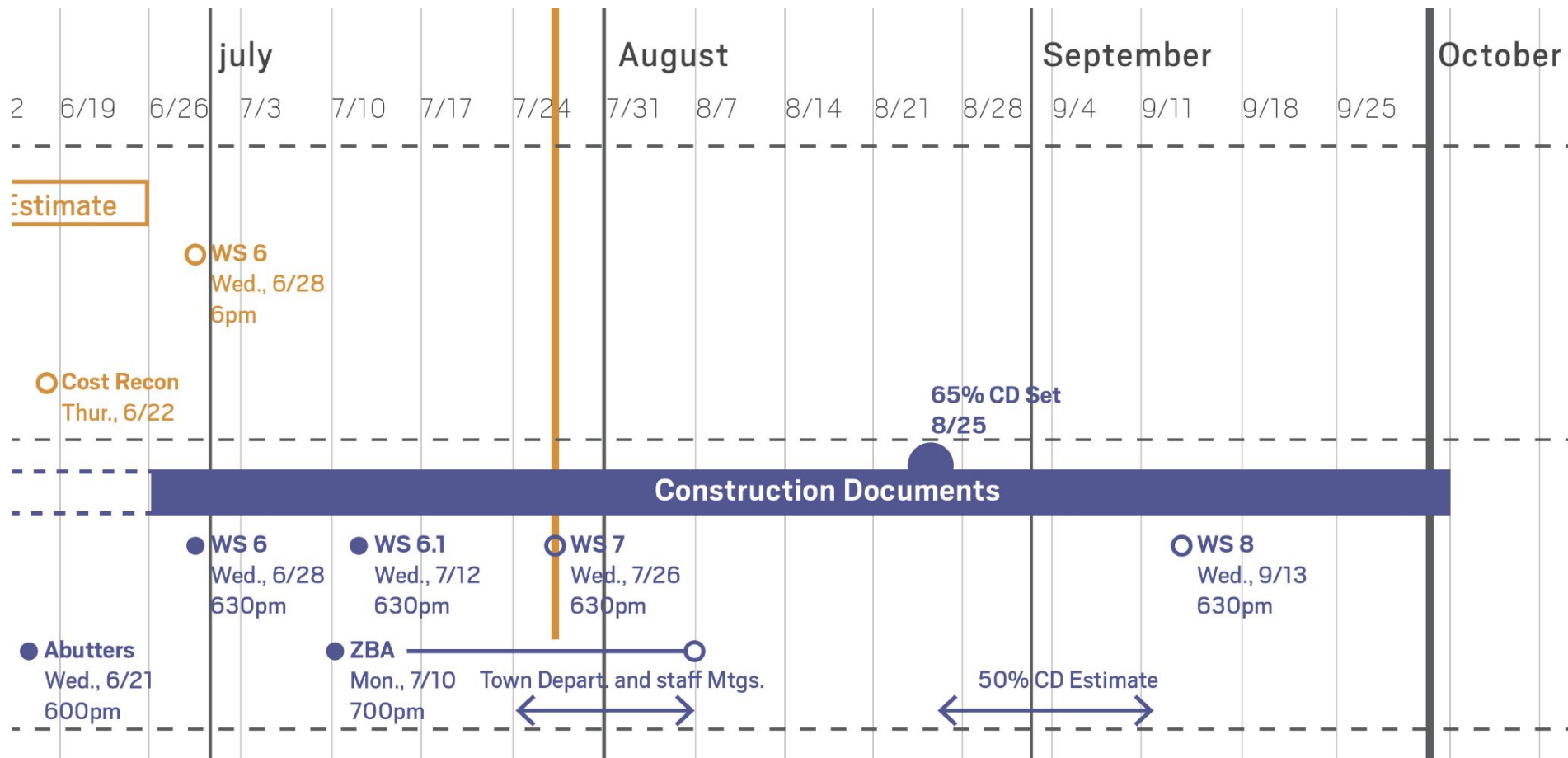
Add Service

Discussion + Next Steps

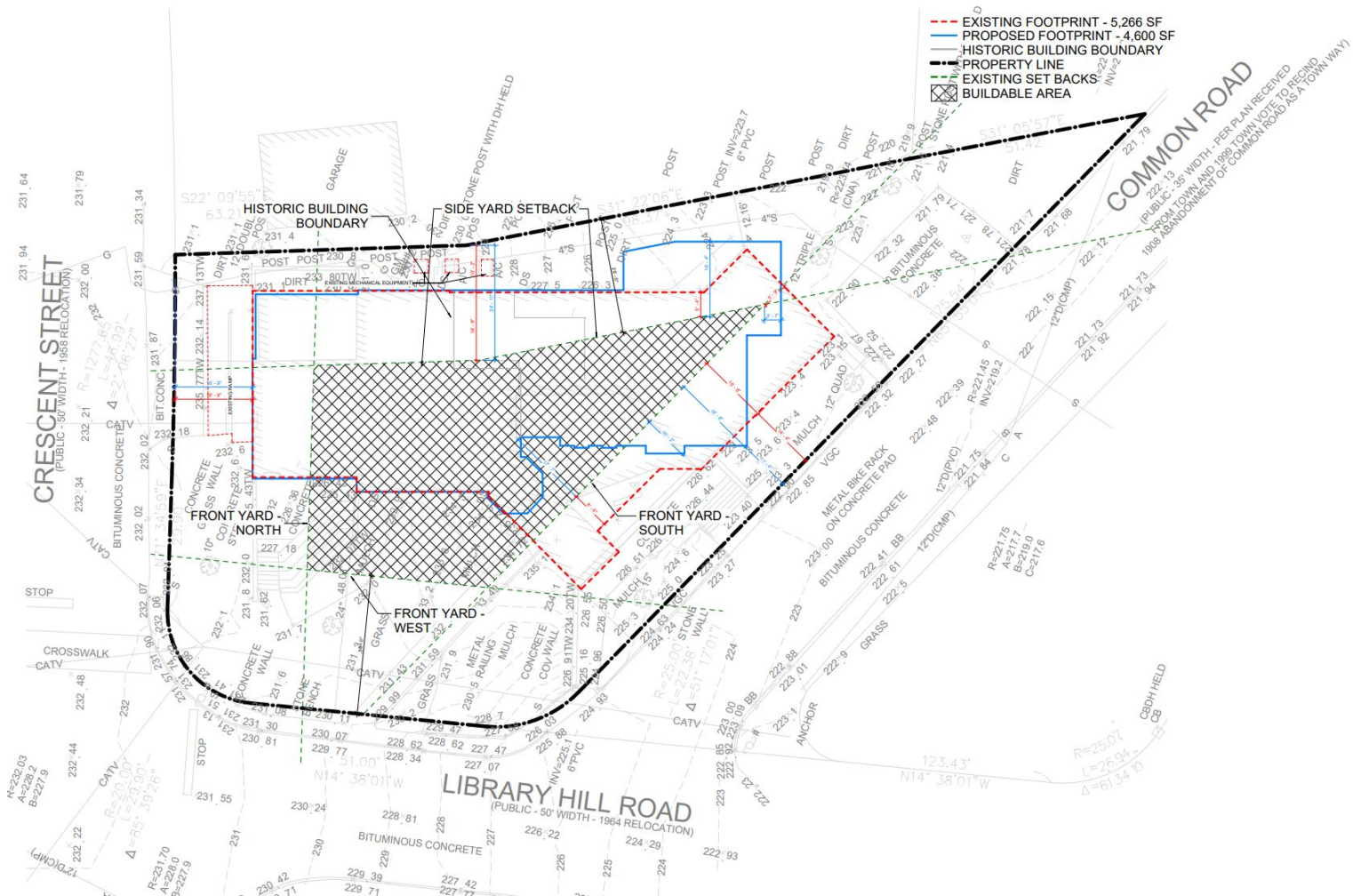
4



SCHEDULE



ZBA Application



Today's Agenda

Introduction

- Review Work Plan + Process Updates

Building Systems Updates

Interior Characteristic

Exterior Characteristic

Landscape Update

Add Service

Discussion + Next Steps

MECHANICAL SYSTEM

VRF HEAT PUMP SYSTEM WITH MAKEUP AIR UNIT

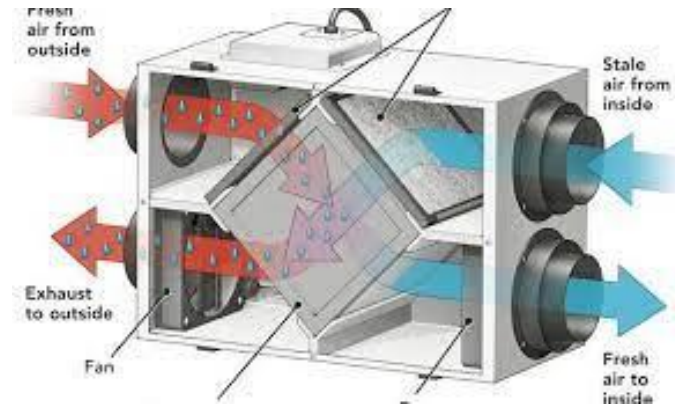
- No zone control ventilation
- Meets stretch code minimum
 - Life expectancy 15 years
- ERV is required for Ventilation air
 - Code minimum outside air



Wall Cassette



Ceiling Cassette



ERV



Roof Condenser

Today's Agenda

Introduction

- Review Work Plan + Process Updates

Building Systems Updates

Interior Characteristic

Exterior Characteristic

Landscape Update

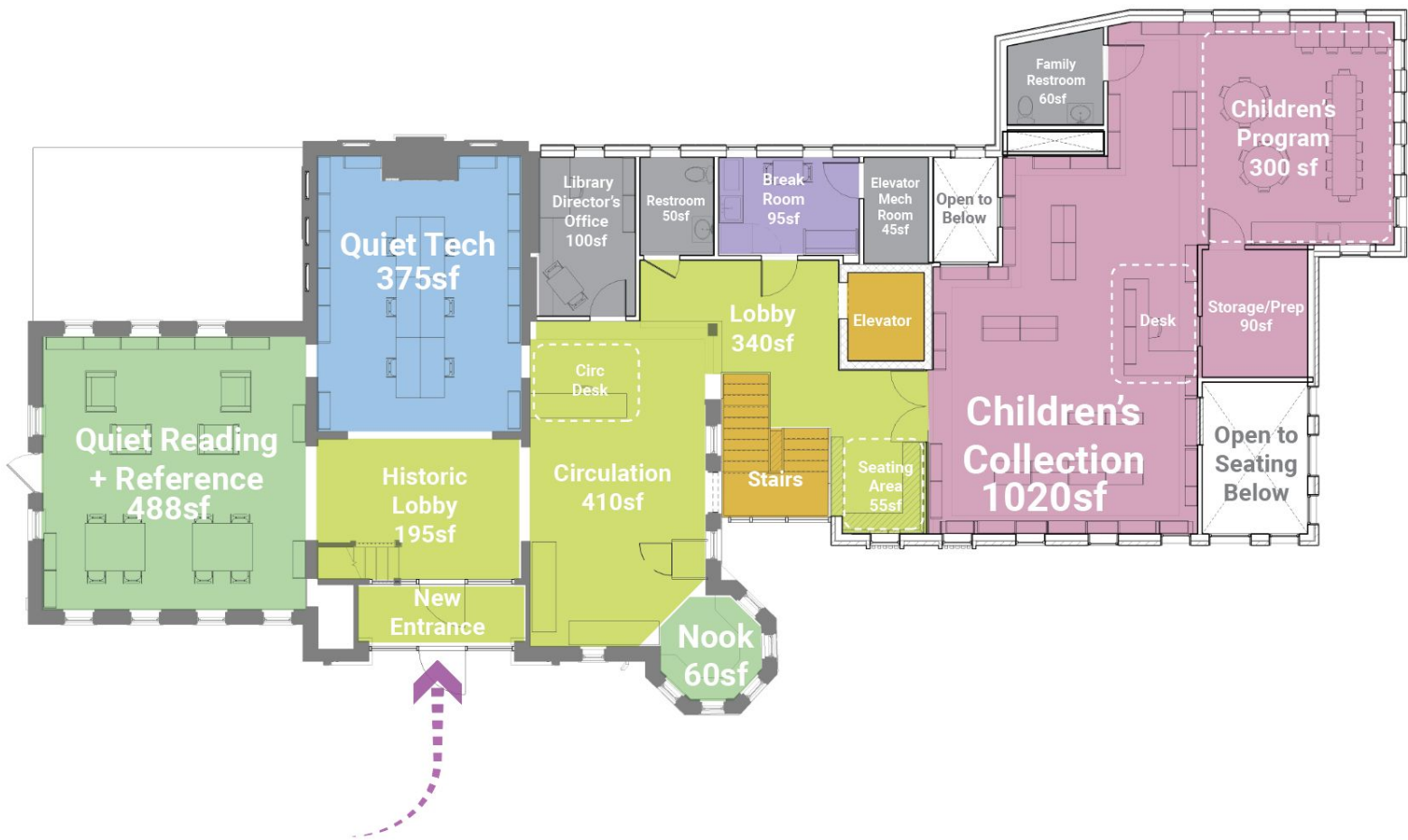
Add Service

Discussion + Next Steps

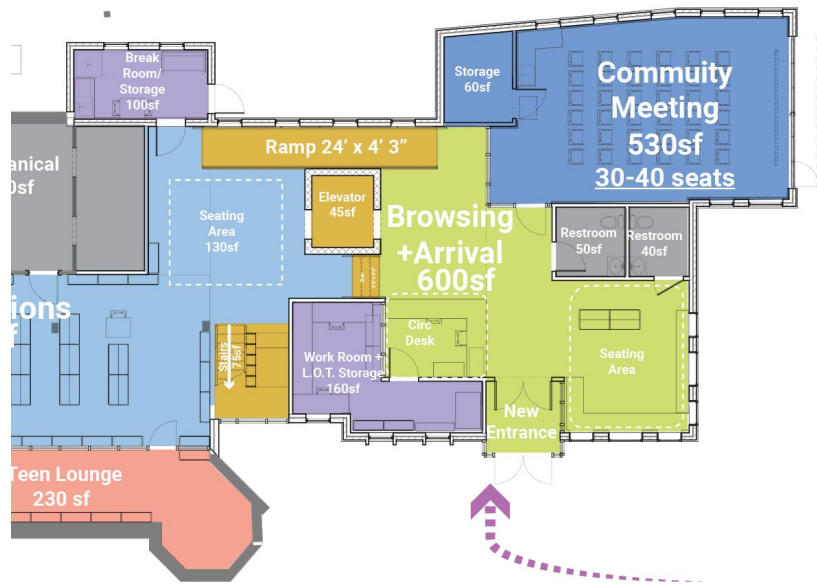
UPDATED PLAN - LOWER LEVEL



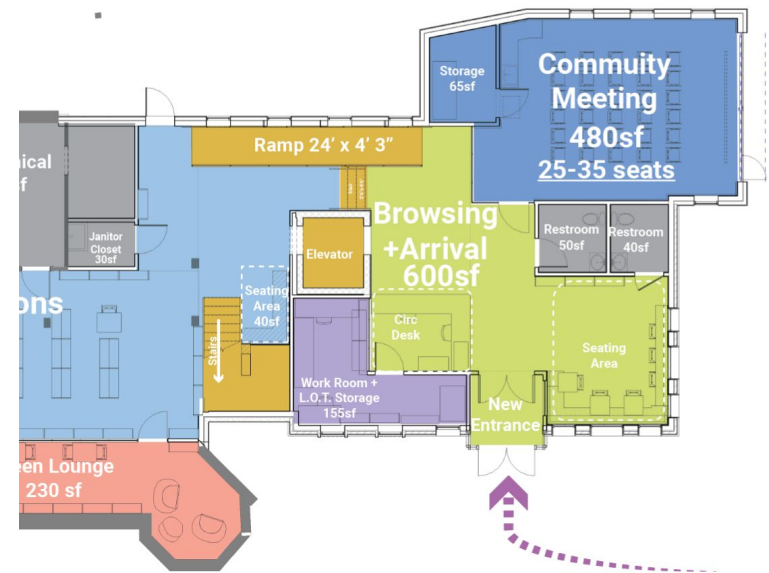
UPDATED PLAN - UPPER LEVEL



PREVIOUS AND CURRENT - LOWER LEVEL



PREVIOUS



REDUCED
FOOTPRINT

PREVIOUS AND CURRENT - UPPER LEVEL



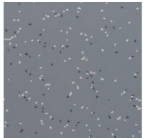
FINISH PLAN - LOWER LEVEL



**EXISTING WOOD
FLOOR**



**LARGE FORMAT
TILE**



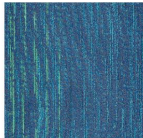
RESILIENT TILE



CORK FLOOR



**PORCELAIN TILE
GREY FLOOR TILE**



CARPET TILES

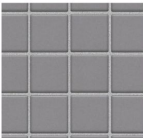


CARPET TILES

FINISH PLAN - UPPER LEVEL



LARGE FORMAT
TILE



PORCELAIN TILE
GREY FLOOR TILE



CORK FLOOR



CARPET TILES

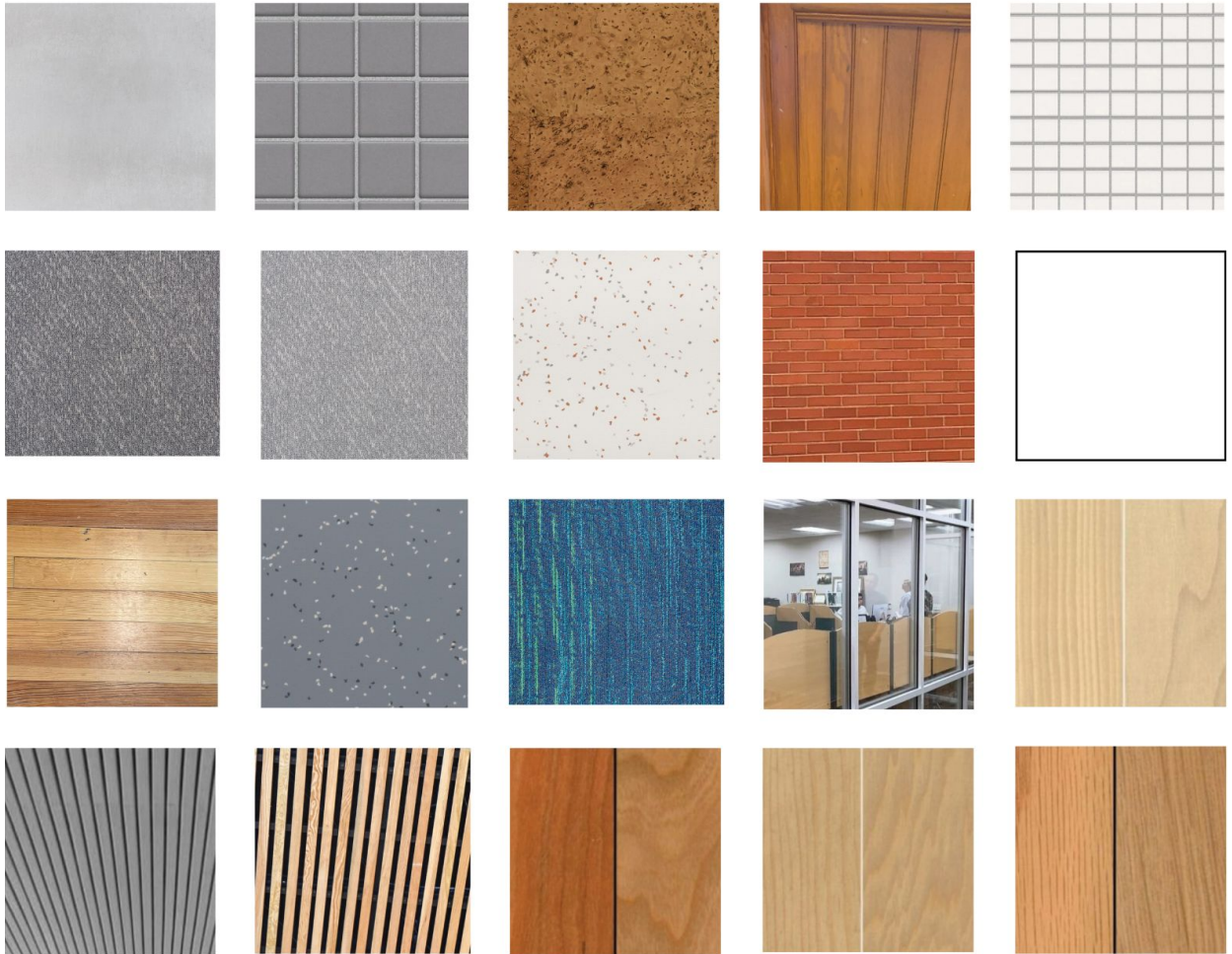


CARPET TILES



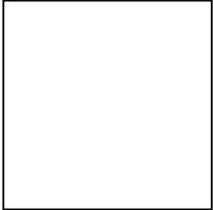
RESILIENT TILE

OVERALL INTERIOR PALETTE

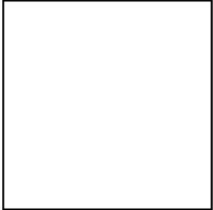


INTERIOR TURRET/COMMUNITY LIVING ROOM

CEILING



WALL



PAINTED GYPSUM PAINTED GYPSUM

MILLWORK



WALL



FLOOR



WOOD PANELS

WOOD PANELS

**LARGE FORMAT
TILE**

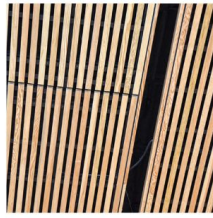


INTERIOR TURRET/COMMUNITY LIVING ROOM

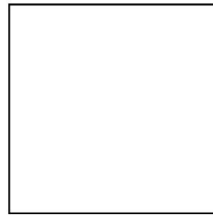


BROWSING AND ARRIVAL

CEILING



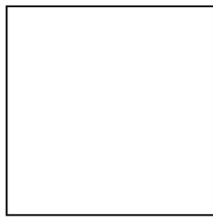
WALL



LINEAR WOOD
CLOUD

PAINTED GYPSUM

CEILING

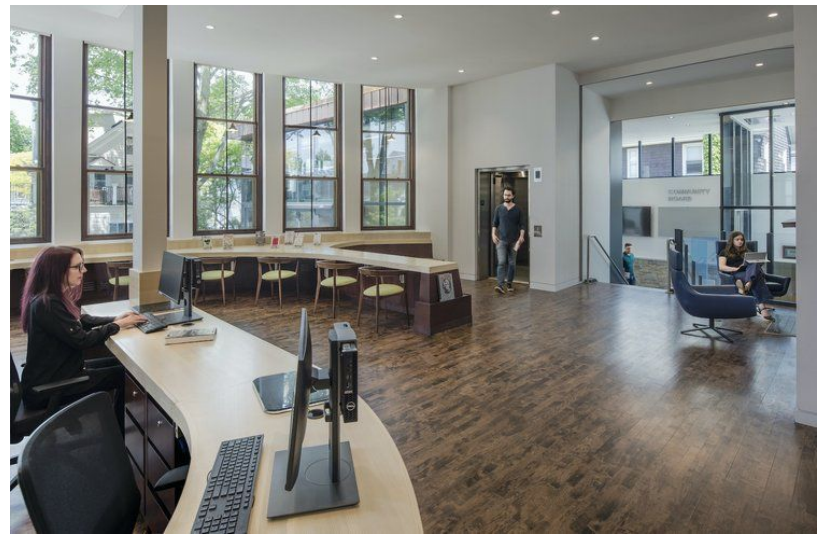


FLOOR



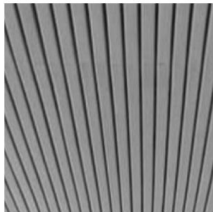
PAINTED GYPSUM

CORK FLOOR



COMMUNITY FLEX ROOM

CEILING



WALL

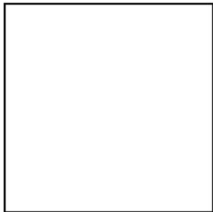


WAINSCOT



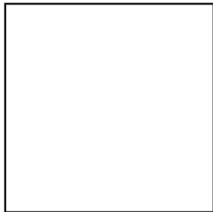
**LINEAR FELT
CLOUD**

CEILING



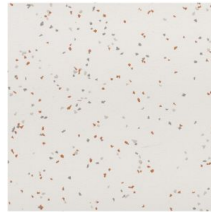
**INTERIOR
STOREFRONT**

WALL



WOOD PANELS

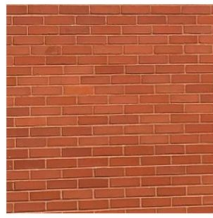
FLOOR



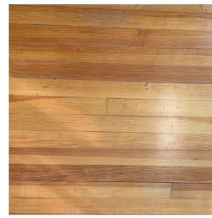
PAINTED GYPSUM PAINTED GYPSUM RESILIENT TILE

CIRCULATION

WALL



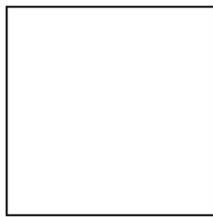
STAIRS



MILLWORK



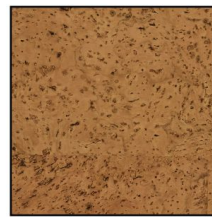
EXISTING BRICK WALL



EXISTING WOOD FLOOR



WOOD PANELS



WALL

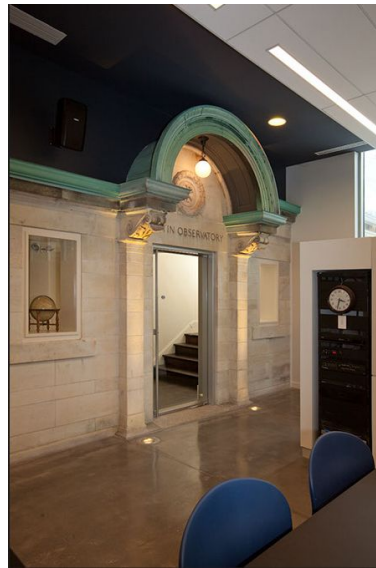
RAMP

FLOOR

PAINTED GYPSUM WITH VINYL GRAPHIC

CORK FLOOR

CORK FLOOR



LOWER LEVEL CIRCULATION



CIRCULATION - ELEVATOR

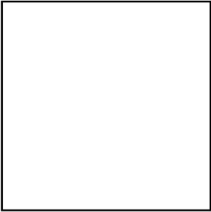


CIRCULATION GASKET - LOWER LEVEL



MEETING ROOMS/TEEN LOUNGE/COLLECTIONS

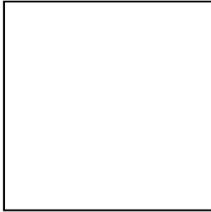
CEILING



WALL



CEILING



FLOOR



PAINTED GYPSUM

INTERIOR
STOREFRONT

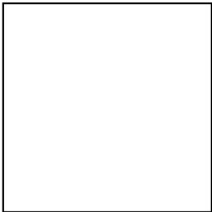
PAINTED GYPSUM

MAIN CARPET
TILES

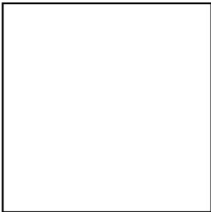
FLOOR



WALL



WALL



FLOOR



CARPET

PAINTED GYPSUM

PAINTED GYPSUM

ACCENT CARPET



FINISH PLAN - UPPER LEVEL



**LARGE FORMAT
TILE**



**PORCELAIN TILE
GREY FLOOR TILE**



CORK FLOOR



CARPET TILES



CARPET TILES



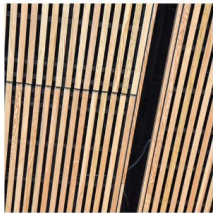
RESILIENT TILE

CIRCULATION GASKET - UPPER LEVEL



CHILDREN'S SPACE

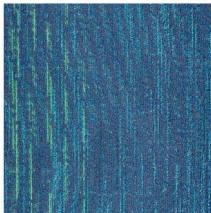
CEILING



WALL

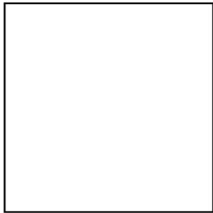


FLOOR



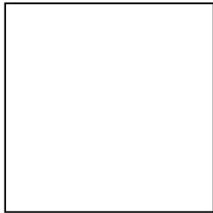
LINEAR WOOD
CLOUD

CEILING



INTERIOR
STOREFRONT

WALL

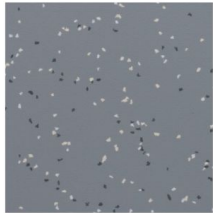


ACCENT CARPET
TILES

FLOOR



FLOOR



PAINTED GYPSUM

PAINTED GYPSUM

MAIN CARPET
TILES

RESILIENT TILES



CHILDREN'S COLLECTION



HISTORIC ROOMS

MILLWORK



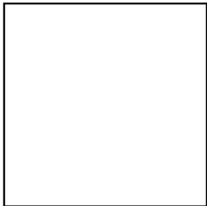
WALL



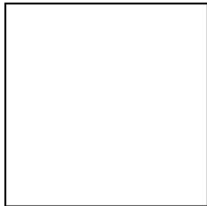
WOOD PANELS

EXISTING
WAINSCOTTING

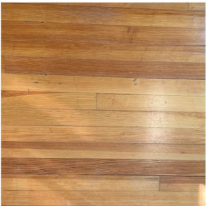
CEILING



WALL



FLOOR



PAINTED EXISTING
PLASTER

PAINTED EXISTING
PLASTER

EXISTING WOOD
FLOOR



DISCUSSION



Today's Agenda

Introduction

- Review Work Plan + Process Updates

Building Systems Updates

Interior Characteristic

Exterior Characteristic

Landscape Update

Add Service

Discussion + Next Steps

OVERALL SITE PLAN



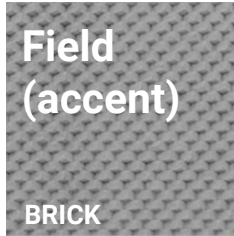
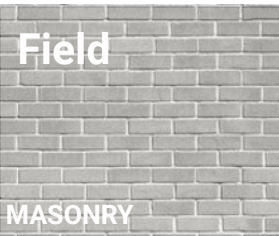
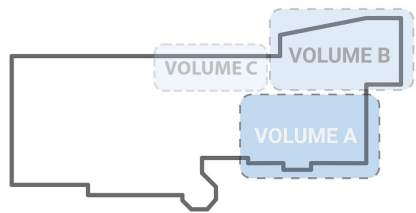
HISTORIC CONTEXT
RANDALL COMPOSITION



EXISTING BUILDING DETAIL



PREVIOUS PROPOSED EXTERIOR COMPOSITION



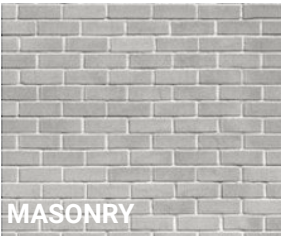
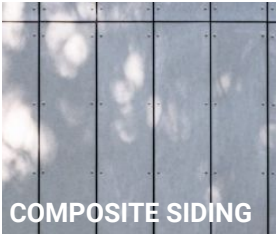
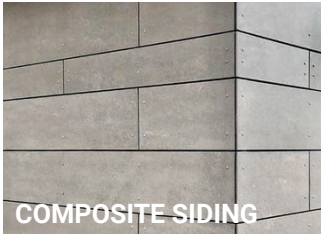
MATERIAL PALETTE



CAP



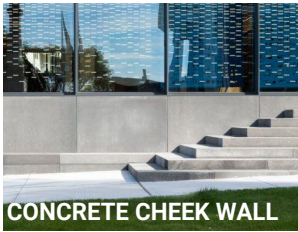
FIELD



BASE



LANDSCAPE



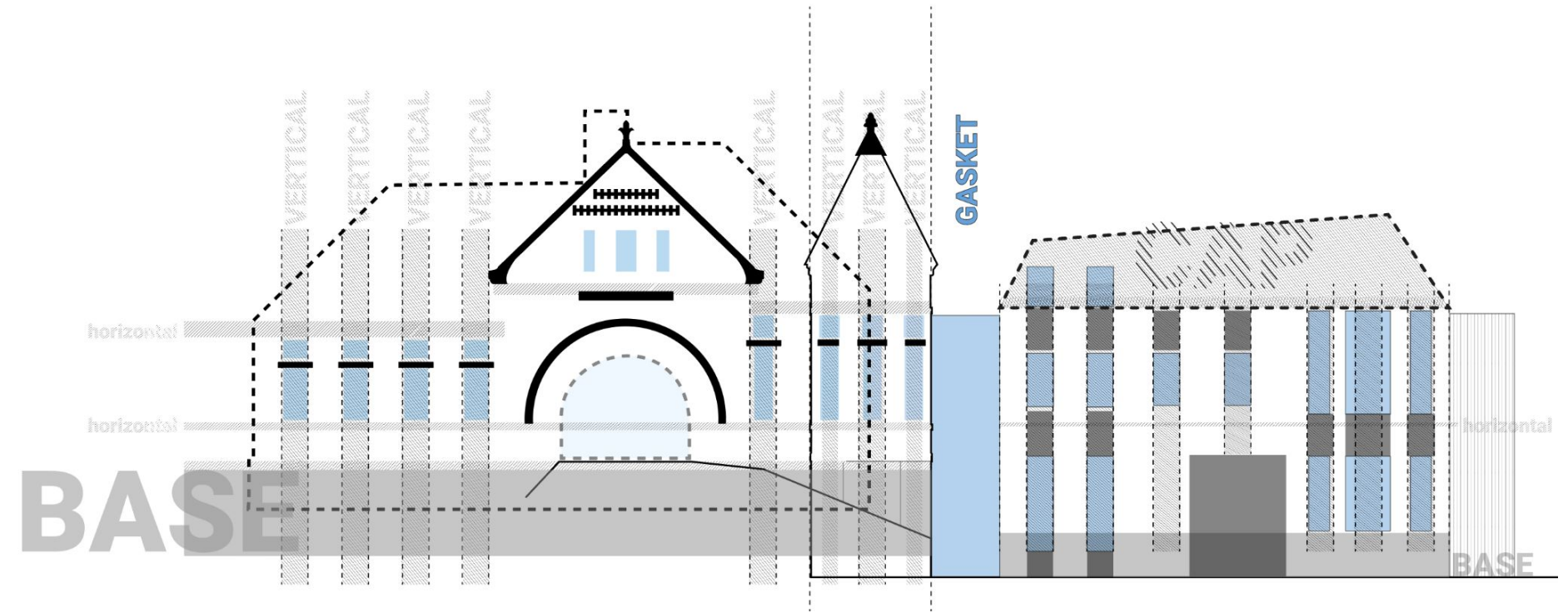
PRECEDENTS



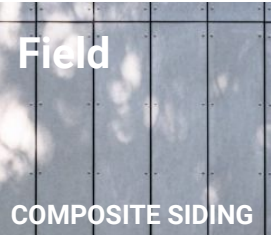
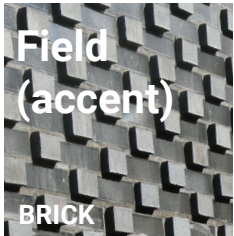
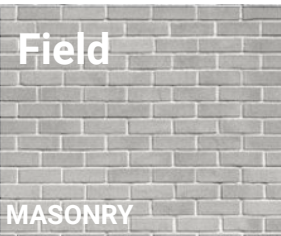
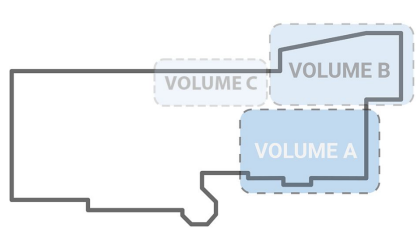
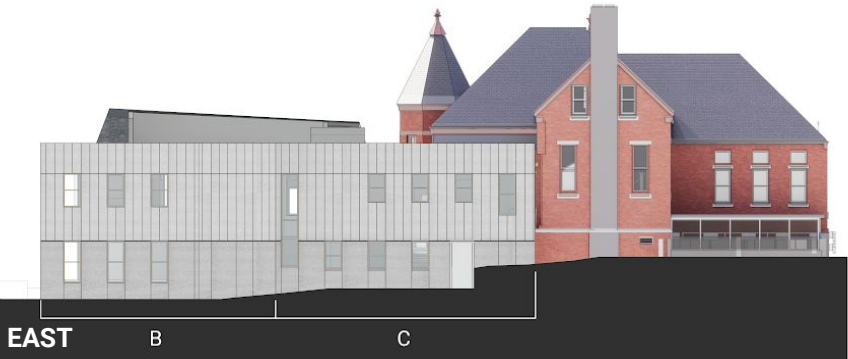
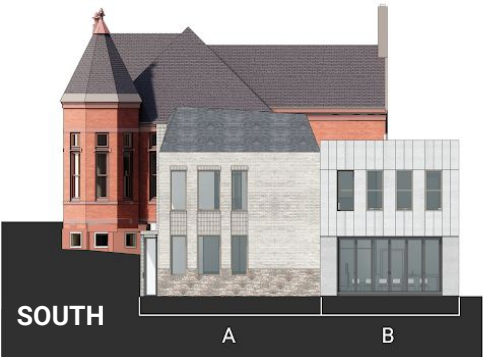
RECOMMENDED PALETTE - DETAILS



PROPOSED EXTERIOR ANALYSIS



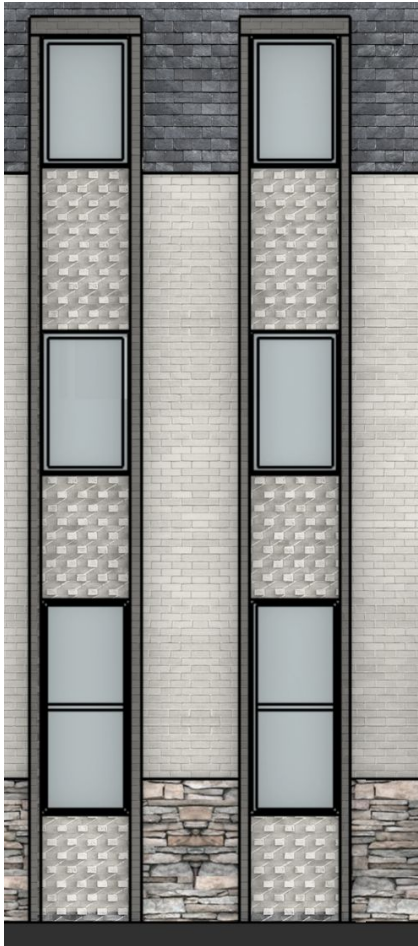
PROPOSED EXTERIOR COMPOSITION



WEST



MASONRY DETAILING



PREVIOUS CONDITION



UPDATED CONDITION



SOUTH



EAST



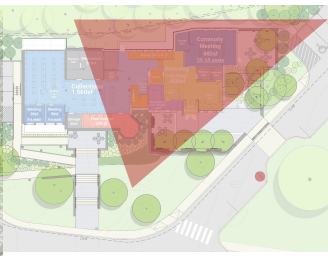


SOUTHWEST APPROACH





SOUTHEAST APPROACH



Today's Agenda

Introduction

- Review Work Plan + Process Updates

Building Systems Updates

Interior Characteristic

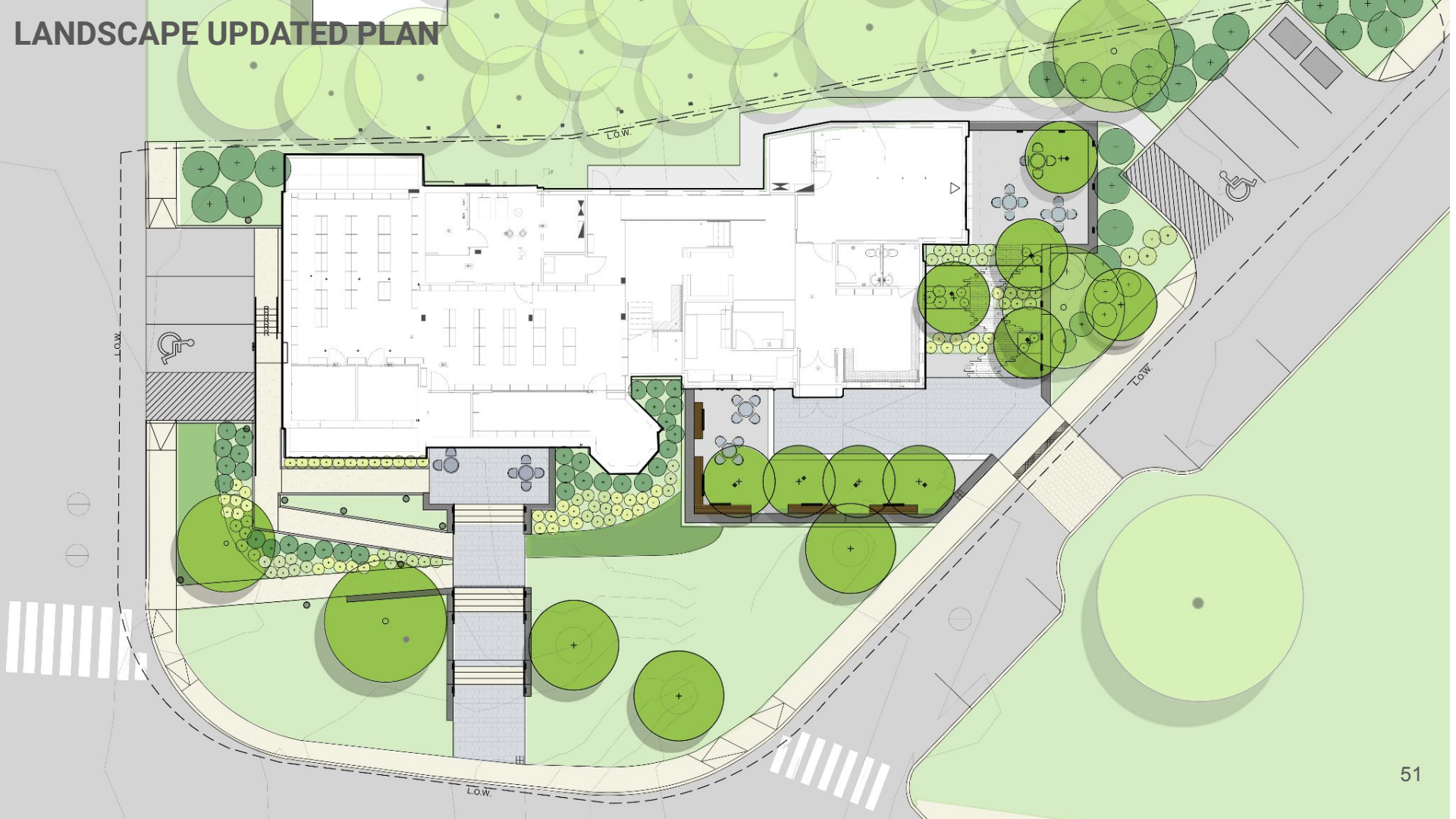
Exterior Characteristic

Landscape Update

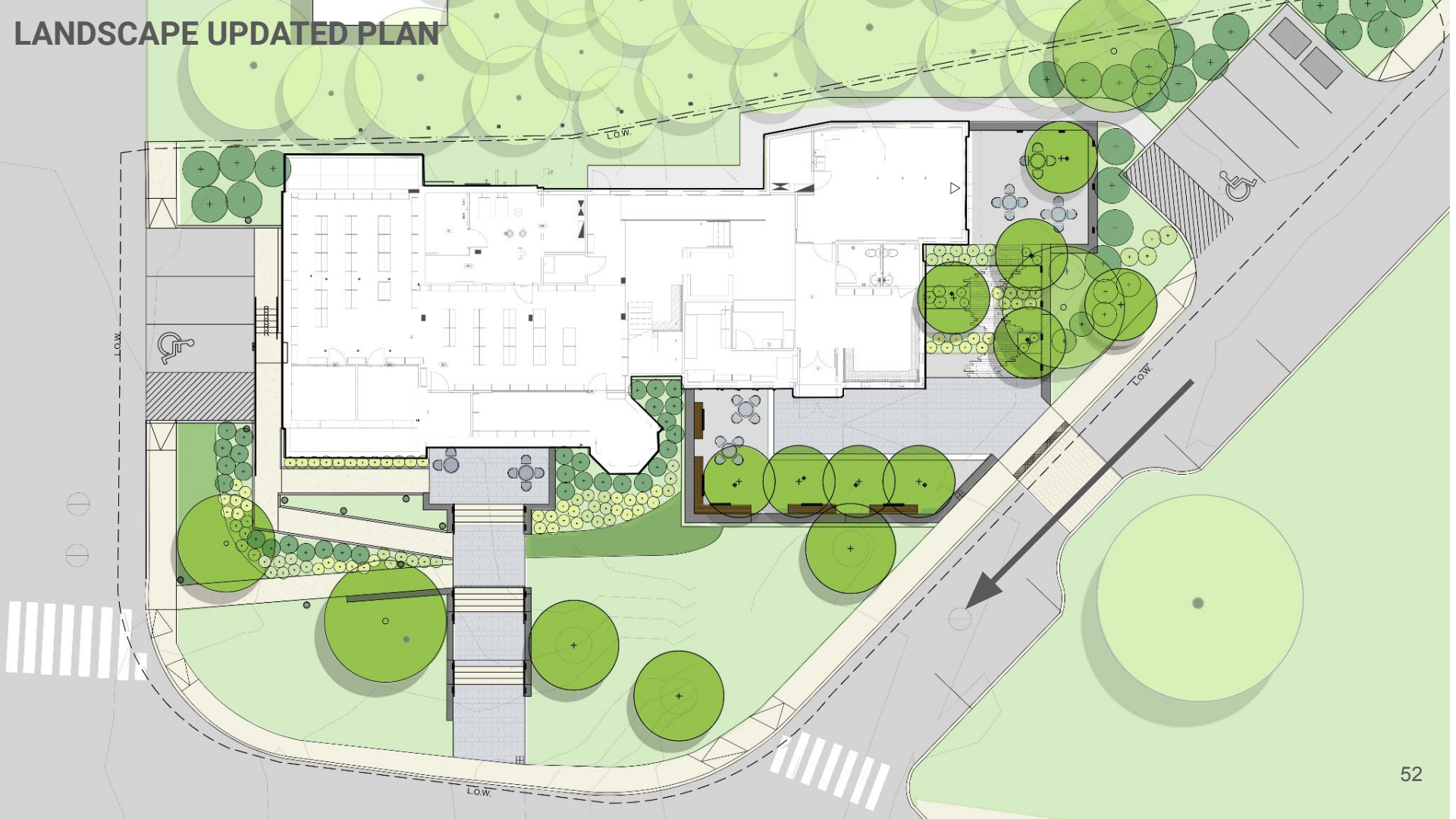
Add Service

Discussion + Next Steps

LANDSCAPE UPDATED PLAN



LANDSCAPE UPDATED PLAN



LANDSCAPE MATERIALS

RETAINING/FREESTANDING WALL OPTIONS



GROUND PLANE MATERIALS



HISTORIC ENTRY MATERIALS



LANDSCAPE PLANTINGS

TREES



red maple



european hornbeam



black tupelo



swamp white oak



red oak

LANDSCAPE PLANTINGS

SHRUBS



little lime hydrangea



oakleaf hydrangea



swamp azalea



sweetspire



bottlebrush buckeye



bayberry



viburnum



red twig dogwood



siberian cypress



blue holly

LANDSCAPE PLANTINGS

GROUNDCOVERS



sensitive fern



barren strawberry



vinca



low blueberry bush



cranesbill



lenten rose



lo-gro sumac



spirea

Today's Agenda

Introduction

- Review Work Plan + Process Updates

Building Systems Updates

Interior Characteristic

Exterior Characteristic

Landscape Update

Add Service

Discussion + Next Steps

Additional Service

1. Modifications to the fire protection system from a standard NFPA13 fire pump and cistern arrangement to a mist system.
2. Adoption of the new stretch energy code for a fully electric building. To accommodate the soon to be adopted code requirements, modifications are required to both the HVAC and electrical systems.
3. Value engineering (VE) support to identify possible alternative solutions to meet the cost challenges of the project at DD phase.
4. Design modifications for the HVAC system resulting from the Town meeting on July 12th. The Town provided directions to proceed with a variable refrigerant flow system VRF with energy recovery ventilation ERV.
5. Assistance with decarbonization grant application.

Additional Service

- 1.Modifications to the fire protection system from a standard NFPA13 fire pump and cistern arrangement to a mist system.
- 2. Adoption of the new stretch energy code for a fully electric building. To accommodate the soon to be adopted code requirements, modifications are required to both the HVAC and electrical systems.
- 3. Value engineering (VE) support to identify possible alternative solutions to meet the cost challenges of the project at DD phase.
- 4. Design modifications for the HVAC system resulting from the Town meeting on July 12th. The Town provided directions to proceed with a variable refrigerant flow system VRF with energy recovery ventilation ERV.
- 5. Assistance with decarbonization grant application.

Total = \$52,000 + hourly for decarb grant

Today's Agenda

Introduction

- Review Work Plan + Process Updates

Building Systems Updates

Interior Characteristic

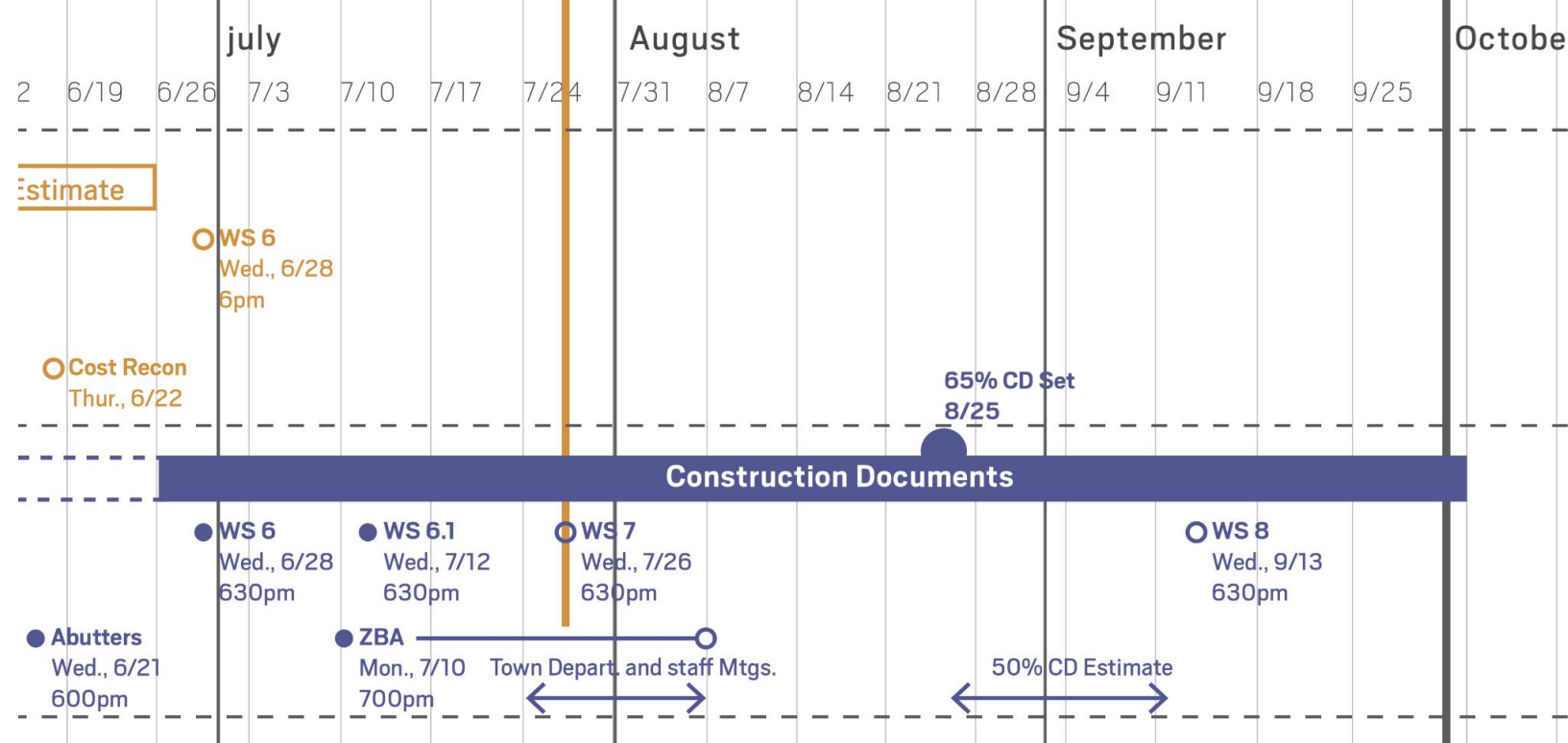
Exterior Characteristic

Landscape Update

Add Service

Discussion + Next Steps

NEXT STEPS



Upcoming Meetings:

- ZBA Hearing: Monday, 8/7
- WS8: Weds., 7/12
- 50% CD Submission: Friday, 8/25
- Town Department Meetings: Week of 7/24 and/or 7/31

A photograph of a brick building, identified as the Randal Library, featuring a large arched window and a sign above it. The image is overlaid with a teal color and the text 'THANK YOU!!!'.

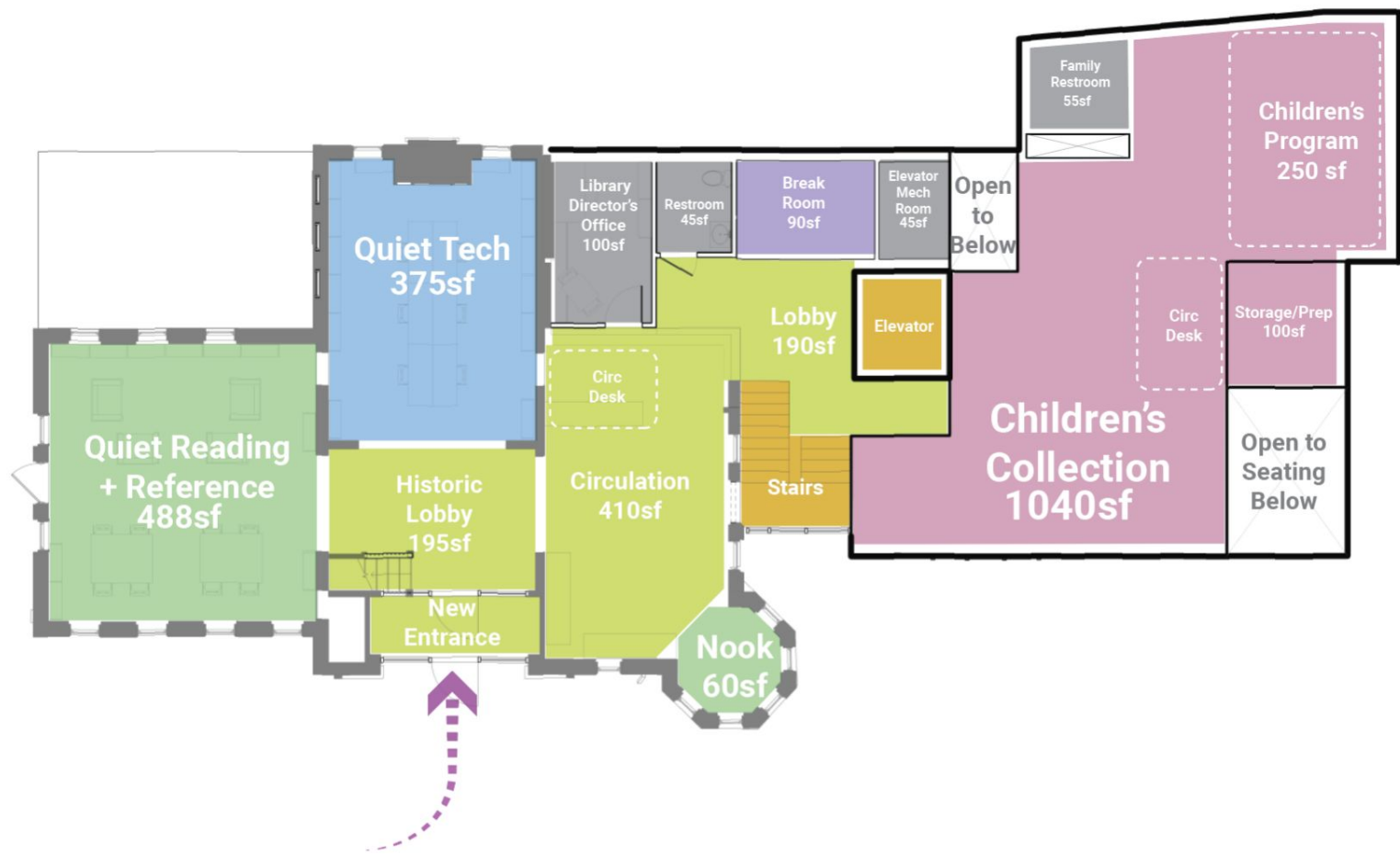
THANK YOU!!!

End

WS 6.1 PLAN - LOWER LEVEL



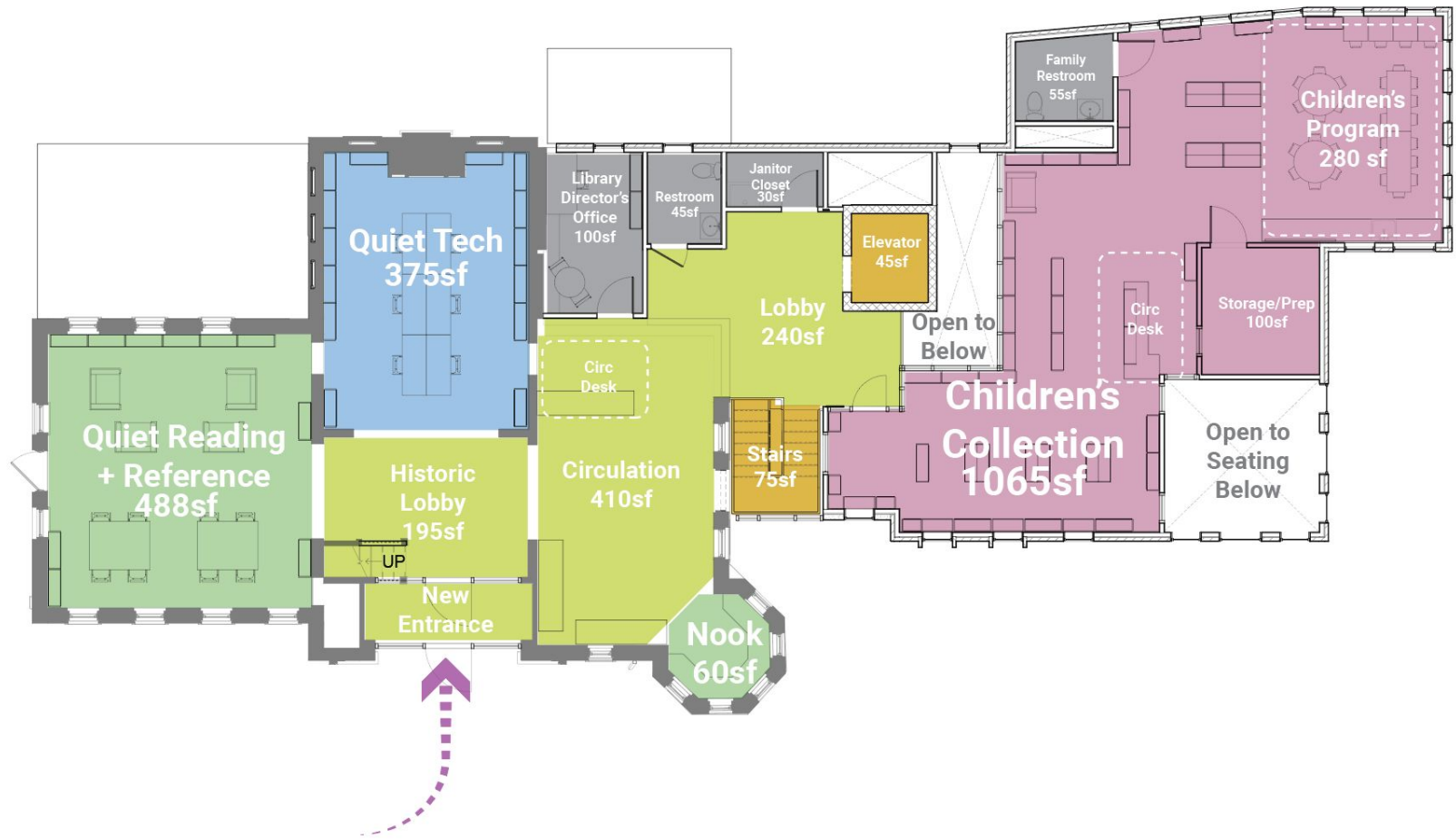
WS 6.1 PLAN - UPPER LEVEL



DD PLAN - LOWER LEVEL



DD PLAN - UPPER LEVEL



LOCATING PERSPECTIVE



UPDATED PLAN - LOWER LEVEL



UPDATED PLAN - UPPER LEVEL

