

# RANDALL LIBRARY PRELIMINARY DESIGN SUMMARY

TOWN MEETING - 5/03/2023

DESIGN DEVELOPMENT WORKSHOP 4

STOW, MA



designLAB architects

G2 G2 COLLABORATIVE  
LANDSCAPE ARCHITECTURE



# RANDALL LIBRARY PRELIMINARY DESIGN SUMMARY

TOWN MEETING - 5/03/2023  
DESIGN DEVELOPMENT WORKSHOP 4  
STOW, MA

## designLAB architects Team:

Ben Youtz, Partner  
Andrew Brookes, Architect  
Audrey Scanlon, Designer

## G2 Collaborative Team:

Gigi Saltonstall  
Alison Goyer

## Consultants:

Fitzmeyer + Tocci Associates  
RGE Structural Engineers  
Nitsch Engineers



designLAB architects



G2 COLLABORATIVE  
LANDSCAPE ARCHITECTURE



# Today's Agenda

## **Introductions (10 min)**

- Review Work Plan + Process Updates

## **Plan + Landscape Overview (20 min)**

- Program Review
- Building Plan Overview
- Landscape Plan Overview

## **Exterior Building (45 min)**

- Review Goals + Guiding Principles
- Review Existing Building Analysis + Massing Options
- Review Material Palette Strategies

## **Discussion + Next Steps (15 min)**



# TEAM



Andrew Brookes



Ben Youtz, AIA



Audrey Scanlon



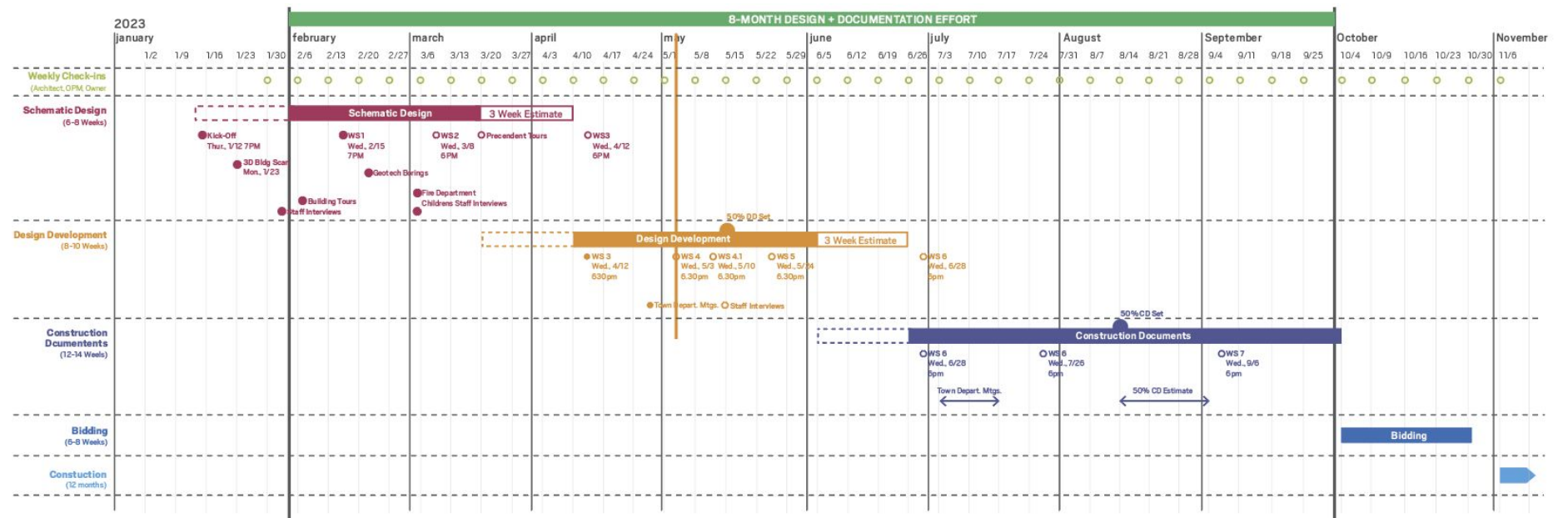
Gigi Saltonstall



Alison Goyer

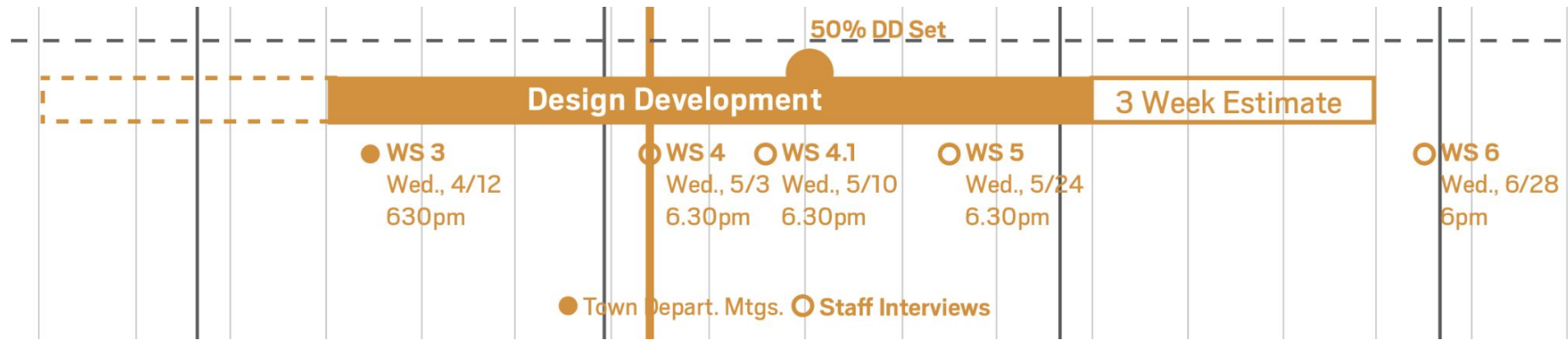


# SCHEDULE





# SCHEDULE





# FIELD TRIP LOCATIONS



# TOWN DEPARTMENT MEETINGS

- **Fire Department**

- Chief JP Benoit

- **Police Department**

- Chief Mike Sallese

- **Green Advisory Committee**

- Arnie Epstein

- John Colonna-Romano

- **Traffic and Parking**

- Mike Sallese

- **Zoning**

- Valerie Oorthuys

- **Facilities**

- Frank Ramsbottom

- Doug Hyde

- **Green Advisory Committee Public Forum:  
Adoption of Specialized Energy Code**
- **Library Land Project**





# Today's Agenda

## **Introductions (10 min)**

- Review Work Plan + Process Updates

## **Plan + Landscape Overview (20 min)**

- Program Review
- Building Plan Overview
- Landscape Plan Overview

## **Exterior Building (45 min)**

- Review Goals + Guiding Principles
- Review Existing Building Analysis + Massing Options
- Review Material Palette Strategies

## **Discussion + Next Steps (15 min)**

# PROGRAM SUMMARY

## Site

- Keep the “Purple Tree”
- Garden Club needs small space to maintain
- Story time will be the main outdoor program
- Parking
  - Need as many as possible
  - 5 Min spot for book drop
- 2 Entrances
- Dumpster off of Crescent
- One-way street towards Great Rd

## Meeting Rooms

- **3+** Small Rooms for tutors and clubs to meet simultaneously
  - 5-7 People
  - Knitting Club, Lego Club, Book Club, Puzzle Club, etc.
- **1** Large Flexible space for up to 30-40
  - Ghost, Trivia, Cookbook Club, etc.

## Teen Space

- Audible Separation
- Visual Supervision
- 2:00-5:00, Arriving from middle school
- Programs
  - Hangout
  - Video games
  - Study
  - Eat
- Enter from upper level
- Two spaces
  - Quiet space
  - Activity Space

## Staff Space

- Processing Space
  - Dedicated space
  - Could be behind circ. desk
- Work Room
  - Accessible from circ. Desk
- 2 Staffed Desks
- Break Room
- Storage

## Collection

- 30,000 Volumes
- 2,000 Video
- Library of Things
  - Requires storage and display
- Will remain same size

## Reading

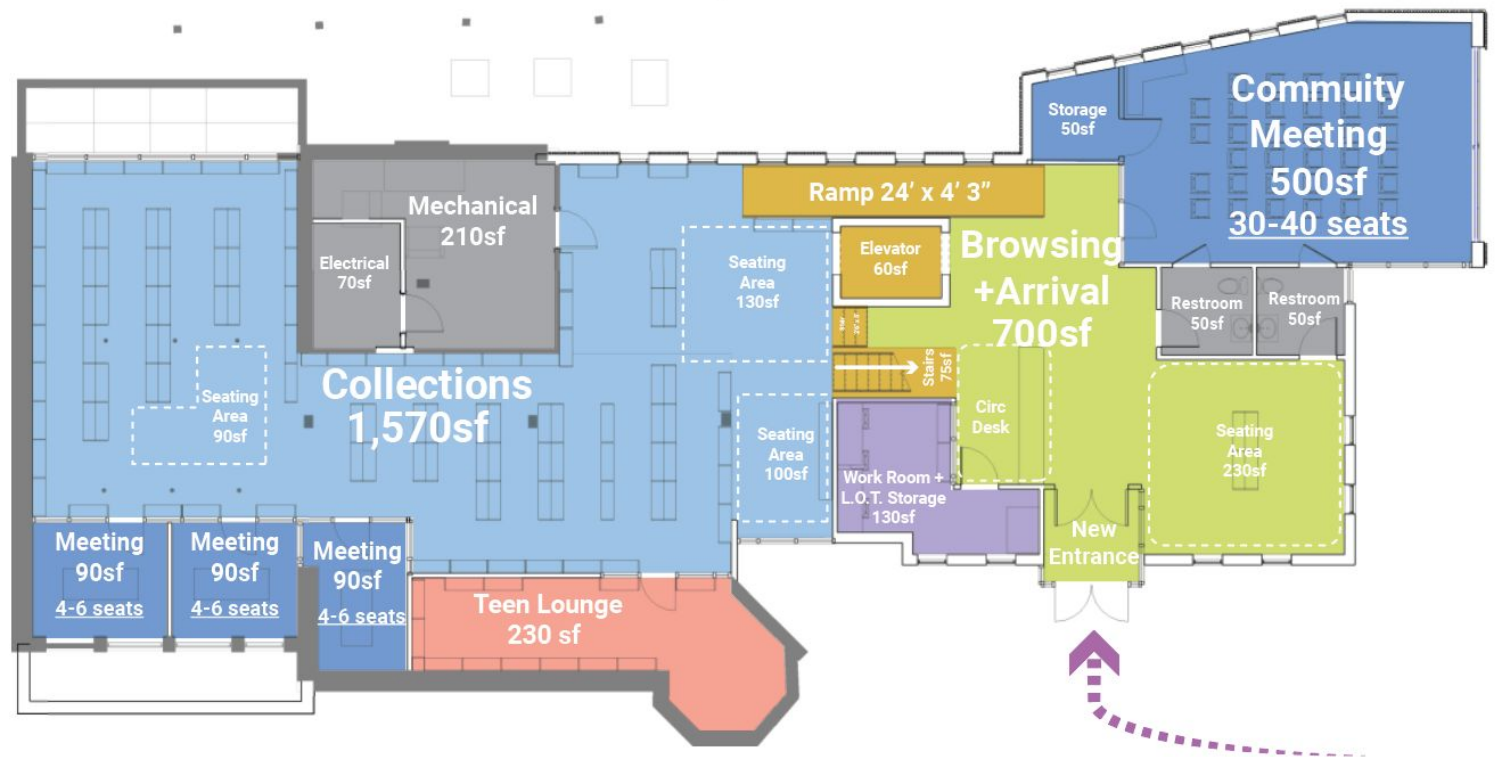
- Not adjacent to children's or YA
- Combine with reference
- Adjacent to computers
- Special Collections
- Audio
- Periodicals

## Childrens

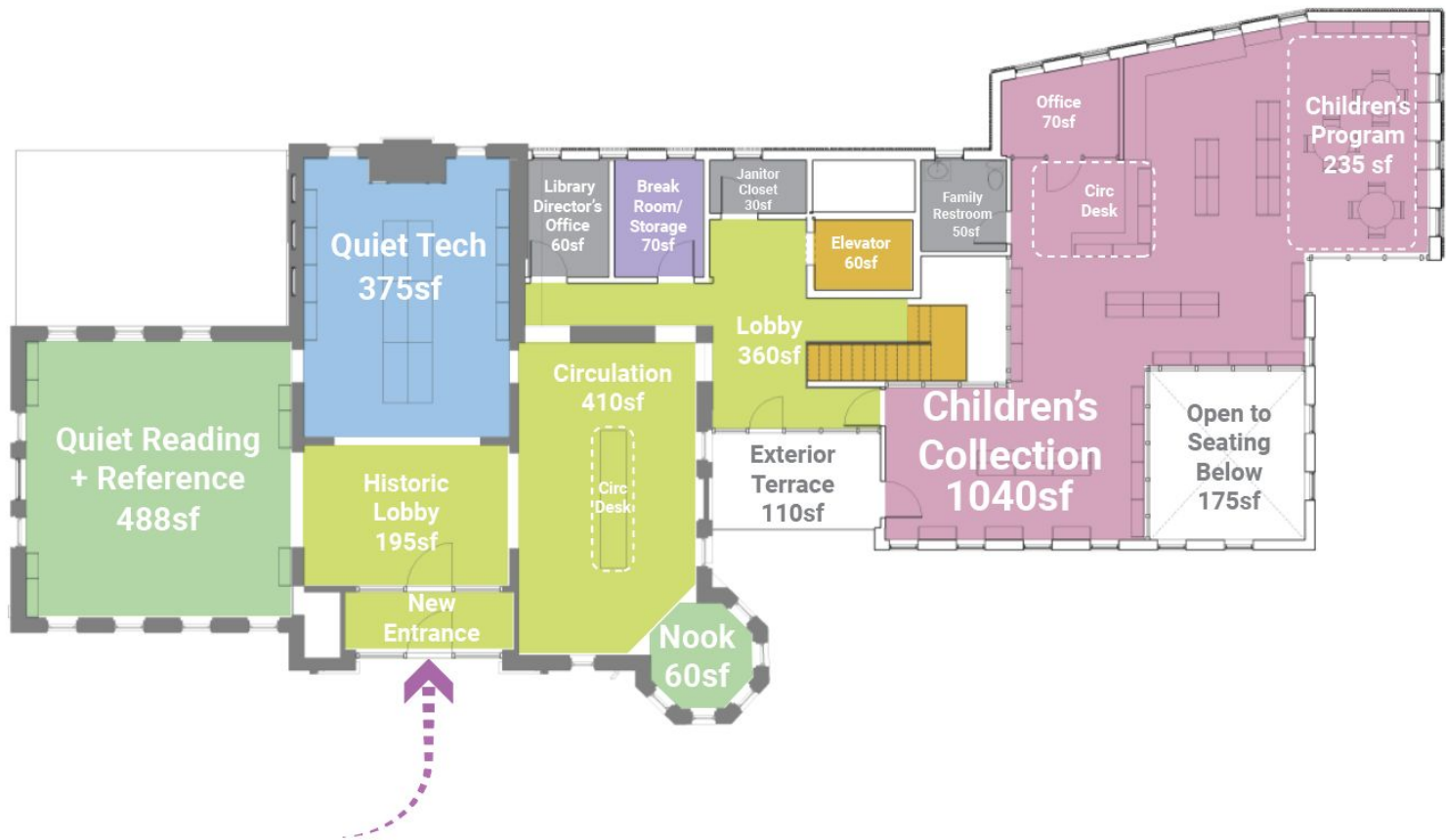
- Small storytime
- Prep staging and storage
- Table space
- No separate program space
- No office required



# LOWER LEVEL PLAN

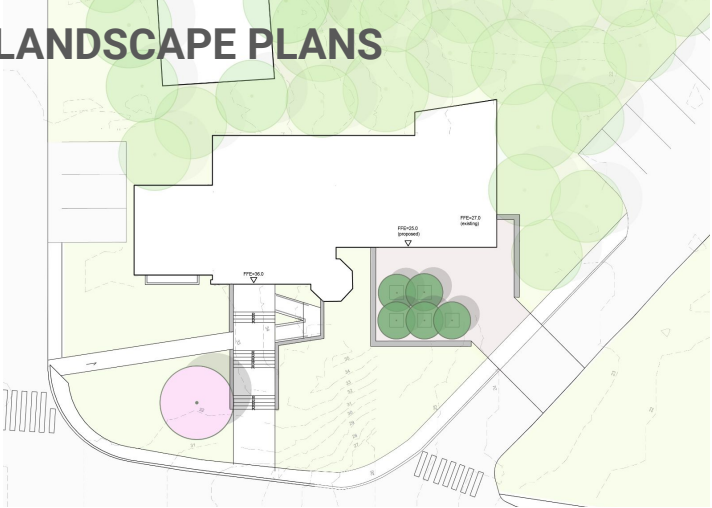


# UPPER LEVEL PLAN

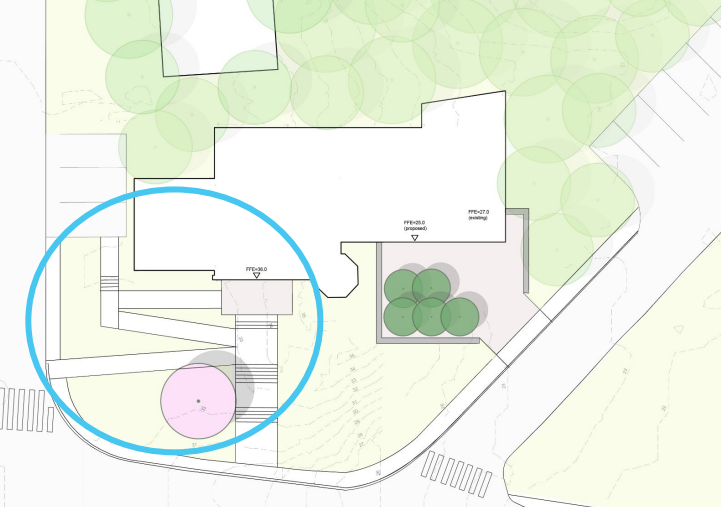




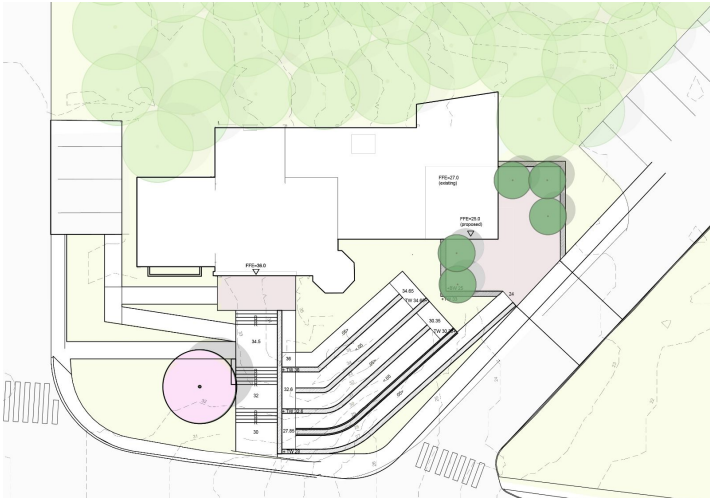
PREVIOUS LANDSCAPE PLANS



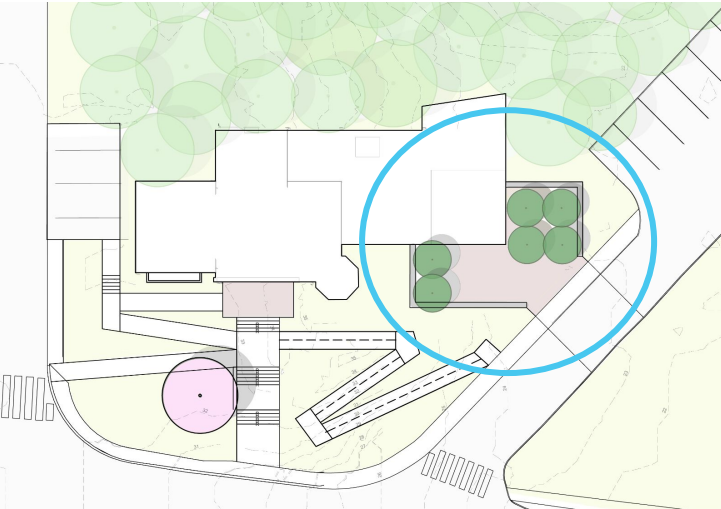
SCHEME A



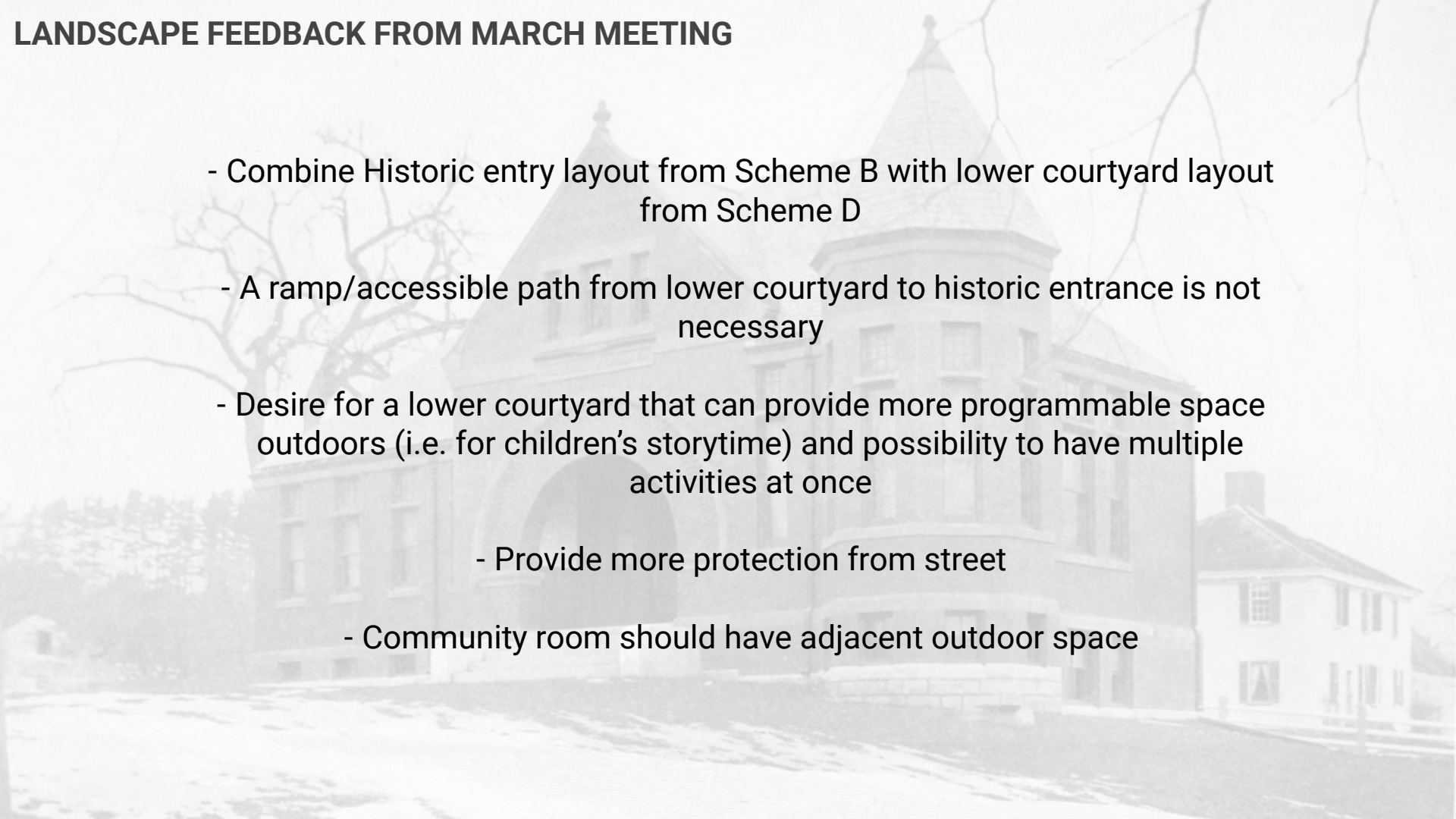
SCHEME B



SCHEME C



SCHEME D



## LANDSCAPE FEEDBACK FROM MARCH MEETING

- Combine Historic entry layout from Scheme B with lower courtyard layout from Scheme D
- A ramp/accessible path from lower courtyard to historic entrance is not necessary
- Desire for a lower courtyard that can provide more programmable space outdoors (i.e. for children's storytime) and possibility to have multiple activities at once
  - Provide more protection from street
  - Community room should have adjacent outdoor space

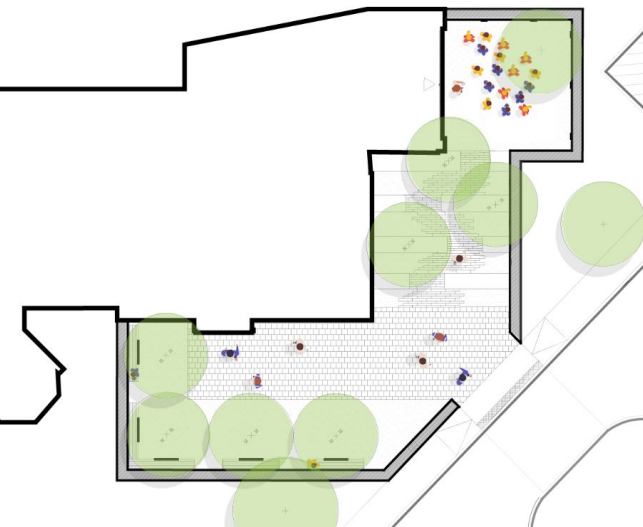


# LANDSCAPE PLAN



# COURTYARD PROGRAM

CHILDREN'S STORYTIME



BOOK FAIR

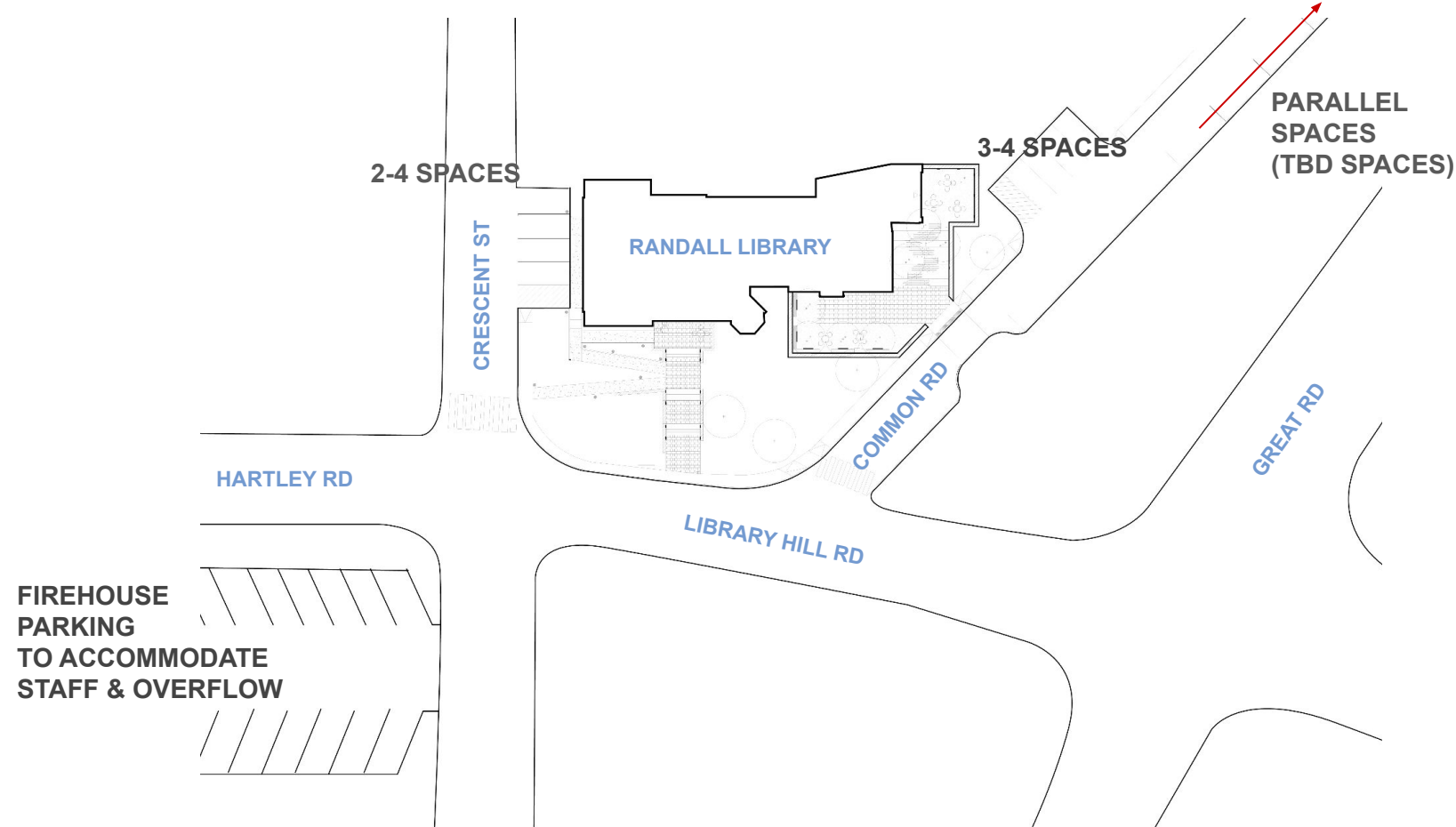


COCKTAIL HOUR/  
FUNDRAISER

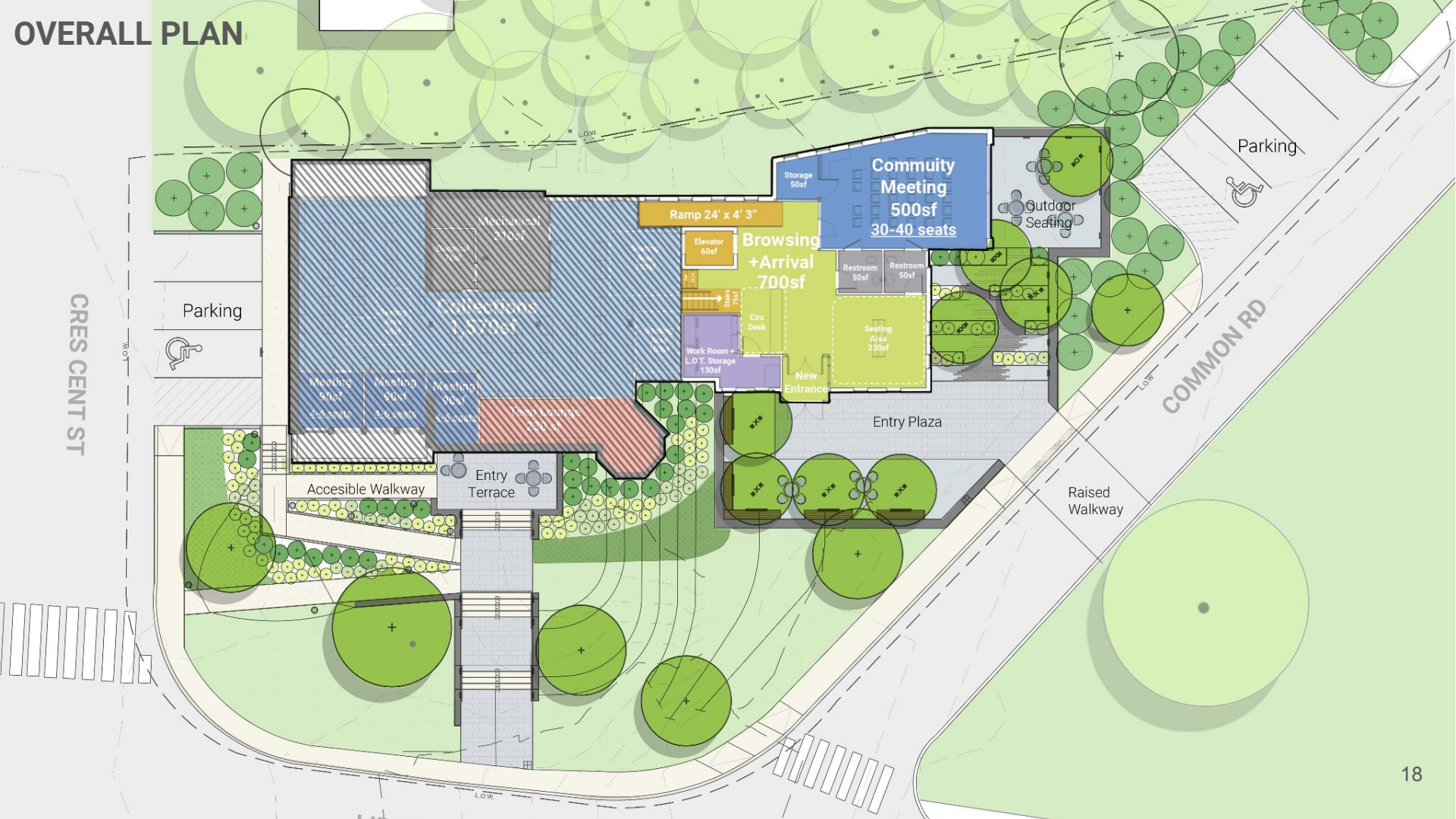




# PARKING DIAGRAM



# OVERALL PLAN





# Today's Agenda

## **Introductions (10 min)**

- Review Work Plan + Process Updates

## **Plan + Landscape Overview (20 min)**

- Program Review
- Building Plan Overview
- Landscape Plan Overview

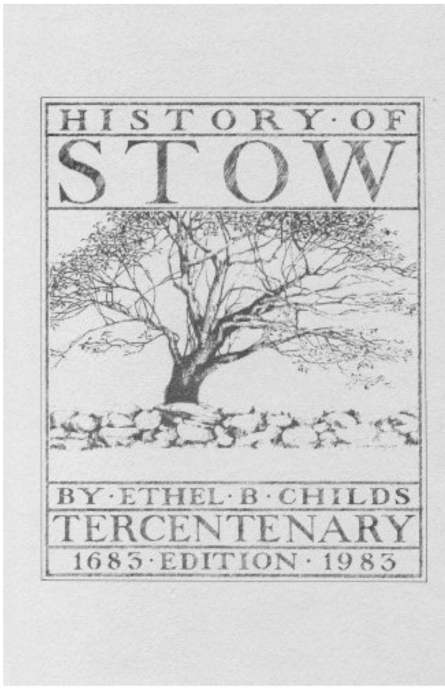
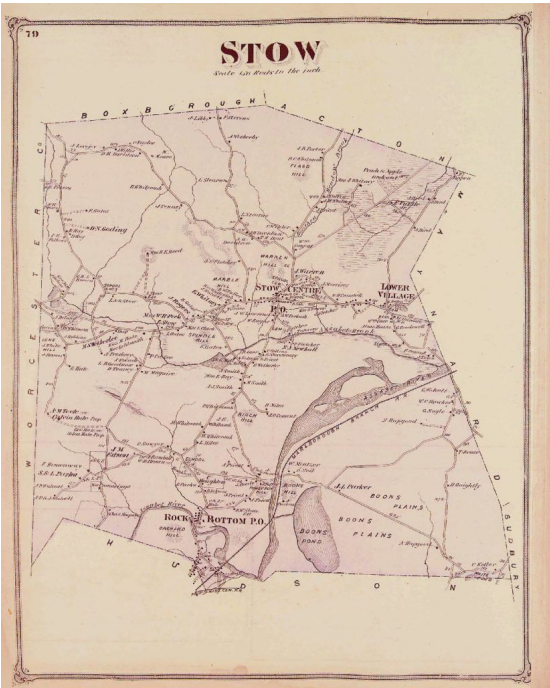
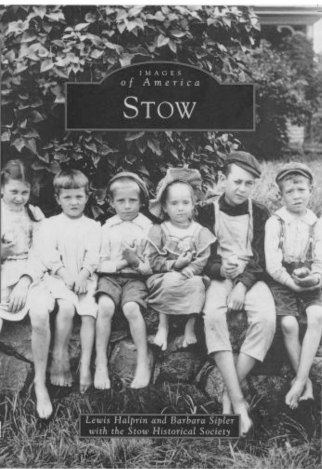
## **Exterior Building (45 min)**

- Review Goals + Guiding Principles
- Review Existing Building Analysis + Massing Options
- Review Material Palette Strategies

## **Discussion + Next Steps (15 min)**



# HISTORIC CONTEXT



# HISTORIC CONTEXT

## HISTORIC BUILDINGS IN STOW



GATES HOUSE



STOW TOWN HALL

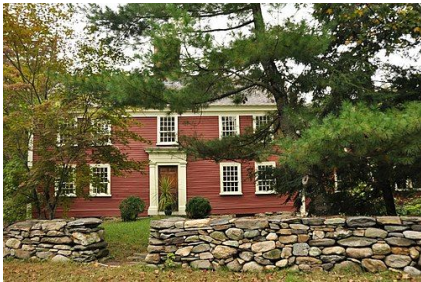


PARISH CHURCH



GLEASONDALE MILL

## NATIONAL REGISTER OF HISTORIC PLACES IN STOW



RANDALL HALE HOMESTEAD



WALCOTT-WHITNEY HOUSE



TENNEY HOMESTEAD



BROWN STOW HOUSE



HAPGOOD WHITNEY HOUSE



# STOW CONTEXT





# STOW CONTEXT



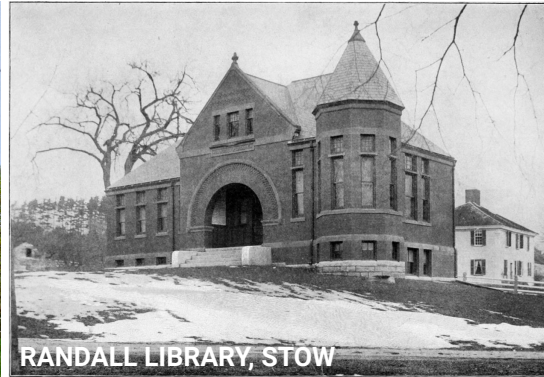
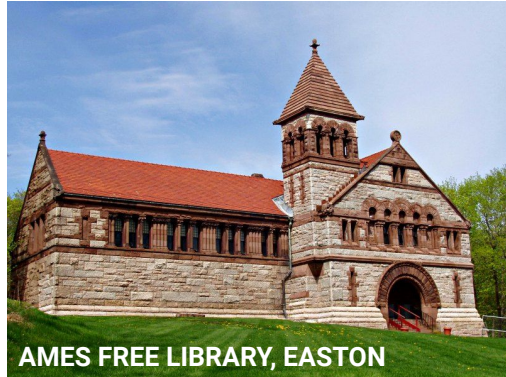
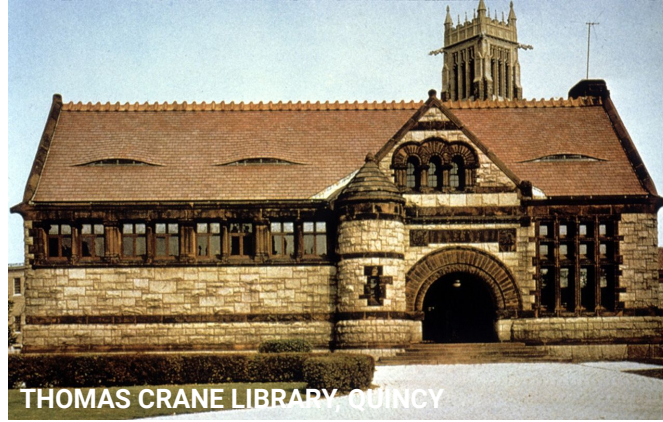
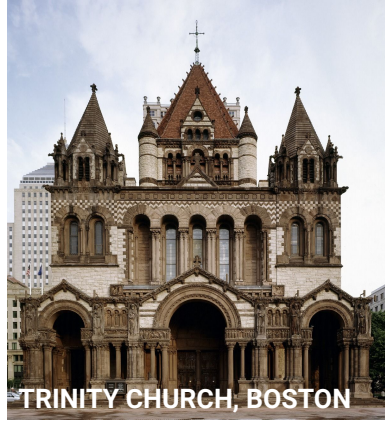


# SITE CONTEXT





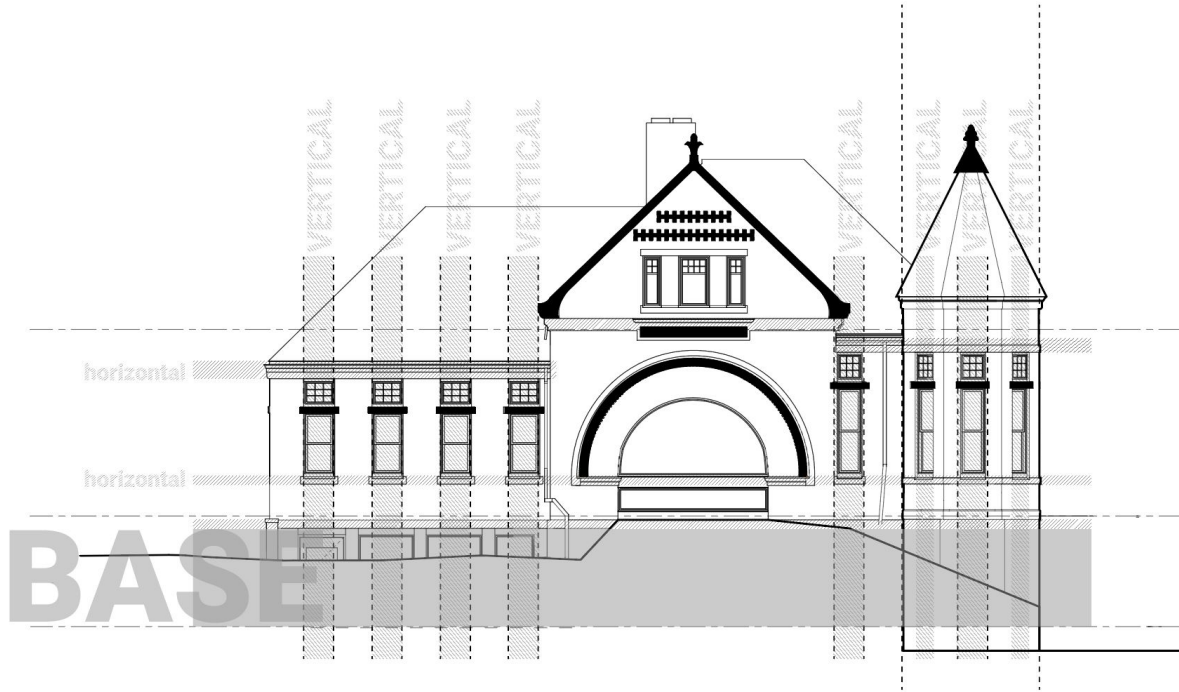
# RICHARDSONIAN ROMANESQUE



## Key Features:

- Emphasizes clear, strong picturesque massing
- Round-headed "Romanesque" arches and recessed entrances
- Richly varied rustication
- Blank stretches of walling contrasting with bands of windows
- Cylindrical towers with conical caps embedded in the walling
- Prominent Horizontal Banding

# RICHARDSONIAN ROMANESQUE



## Key Features:

- Emphasizes clear, strong picturesque massing
- Round-headed "Romanesque" arches and recessed entrances
- Richly varied rustication
- Blank stretches of walling contrasting with bands of windows
- Cylindrical towers with conical caps embedded in the walling
- Prominent Horizontal Banding

# The Secretary of the Interior's Standards for the Treatment of Historic Properties: **Rehabilitation**

A new addition must preserve the building's historic character, form, significant materials, and features. It must be compatible with the massing, size, scale, and design of the historic building while differentiated from the historic building. It should also be designed and constructed so that the essential form and integrity of the historic building would remain if the addition were to be removed in the future.

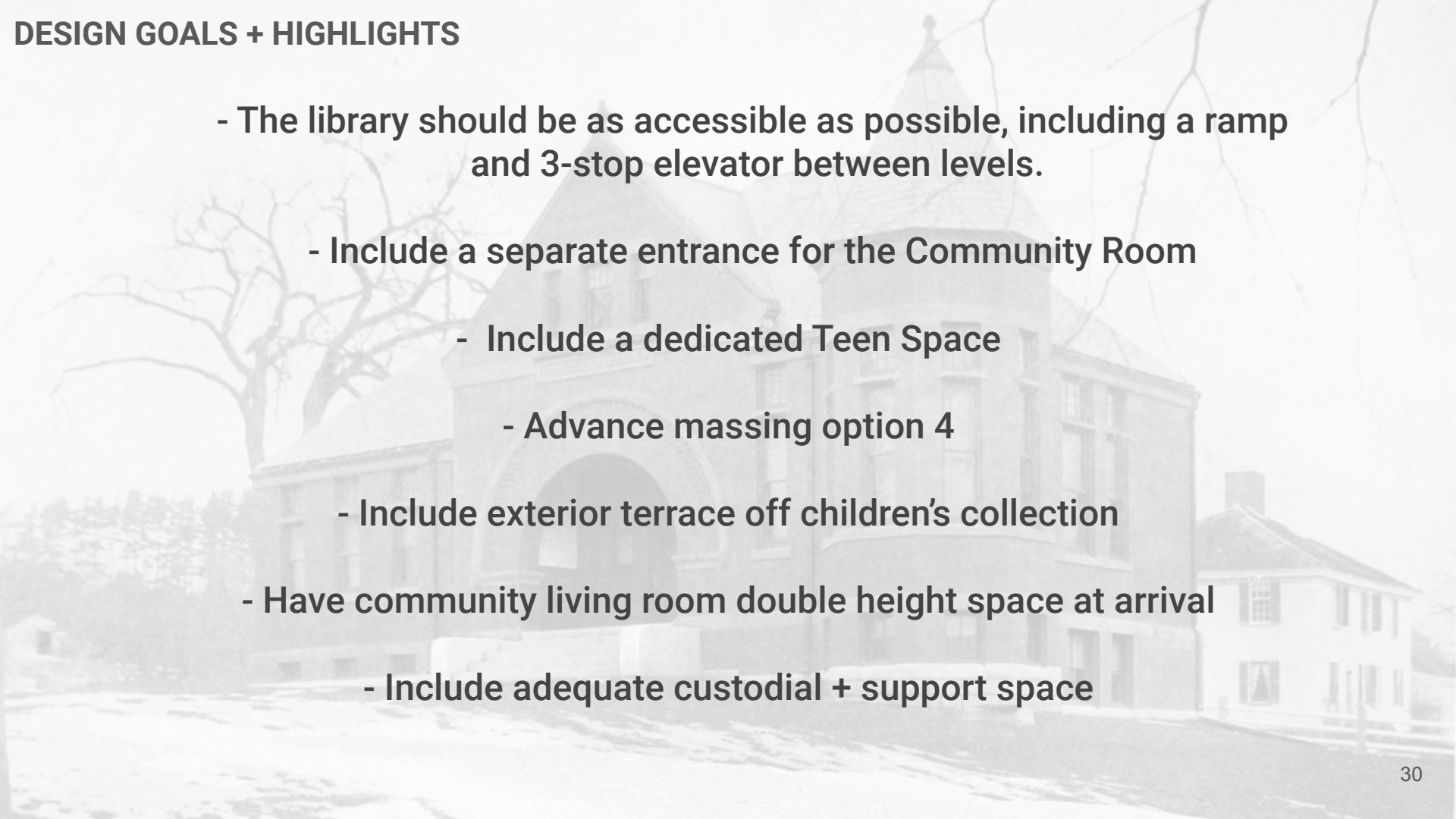


**HISTORIC CONTEXT**  
RANDALL COMPOSITION



# GUIDING PRINCIPLES

- Addition should feed distinct, yet complementary, to original Library building as its own 'gem'
- Create a balanced composition of primarily natural materials
  - Amplify Library's presence and view to Town Common
- Composition should take cues from the defining elements of the original Library (verticality, repetition, sloped roofs, etc.)
- Create a distinct separation or 'gasket' between original Library and new addition
- The character of the addition should be rooted in the context that defines Stow



## DESIGN GOALS + HIGHLIGHTS

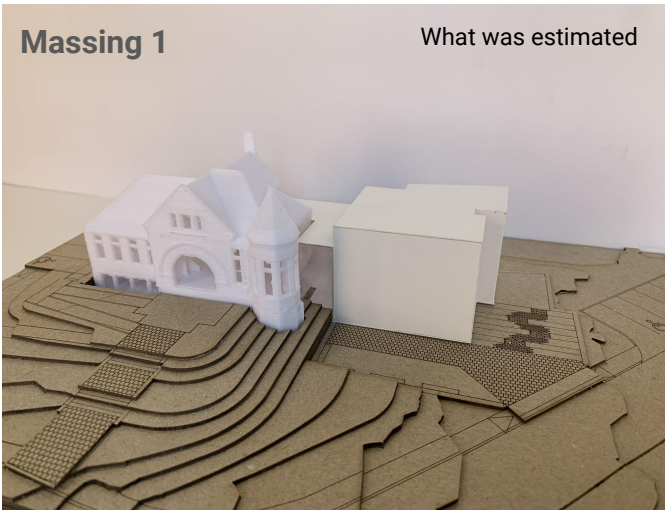
- The library should be as accessible as possible, including a ramp and 3-stop elevator between levels.
- Include a separate entrance for the Community Room
  - Include a dedicated Teen Space
  - Advance massing option 4
- Include exterior terrace off children's collection
- Have community living room double height space at arrival
  - Include adequate custodial + support space



# MASSING STRATEGY

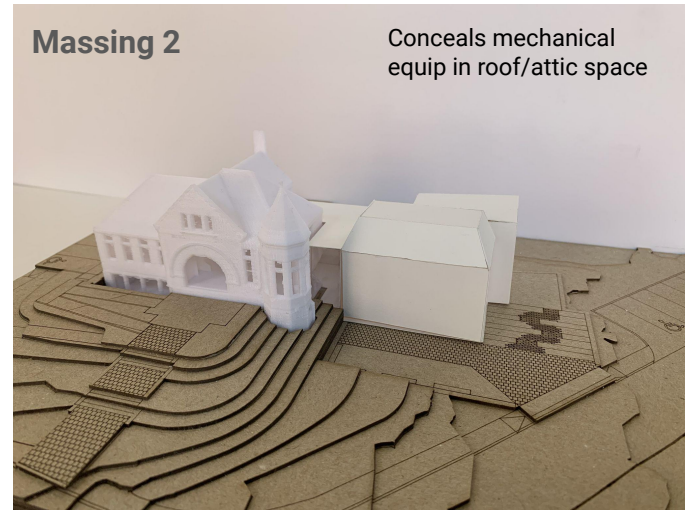
**Massing 1**

What was estimated



**Massing 2**

Conceals mechanical  
equip in roof/attic space



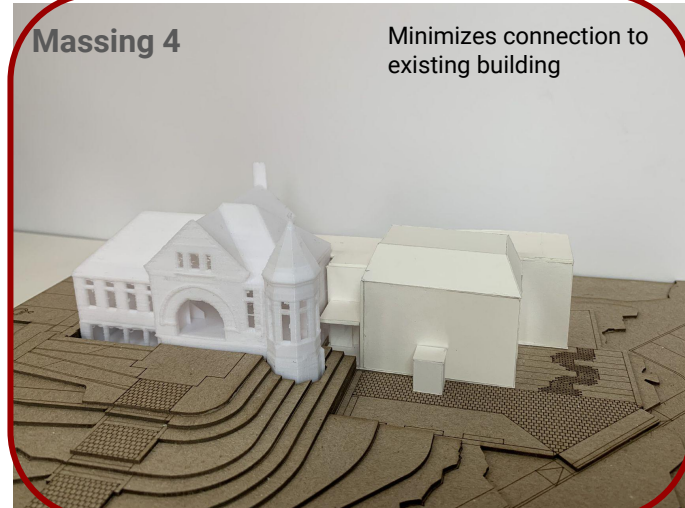
**Massing 3**

Roofs respond to existing  
building



**Massing 4**

Minimizes connection to  
existing building



# MASSING STRATEGY

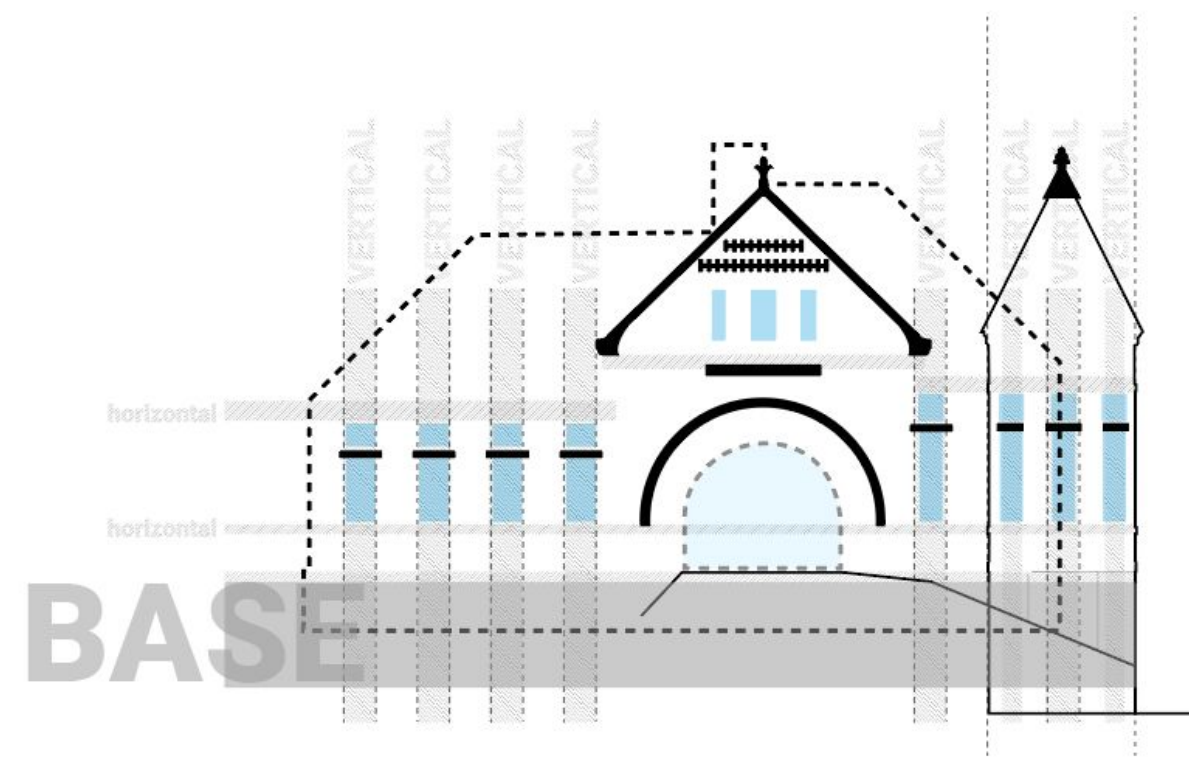
Cap 1



Cap 2

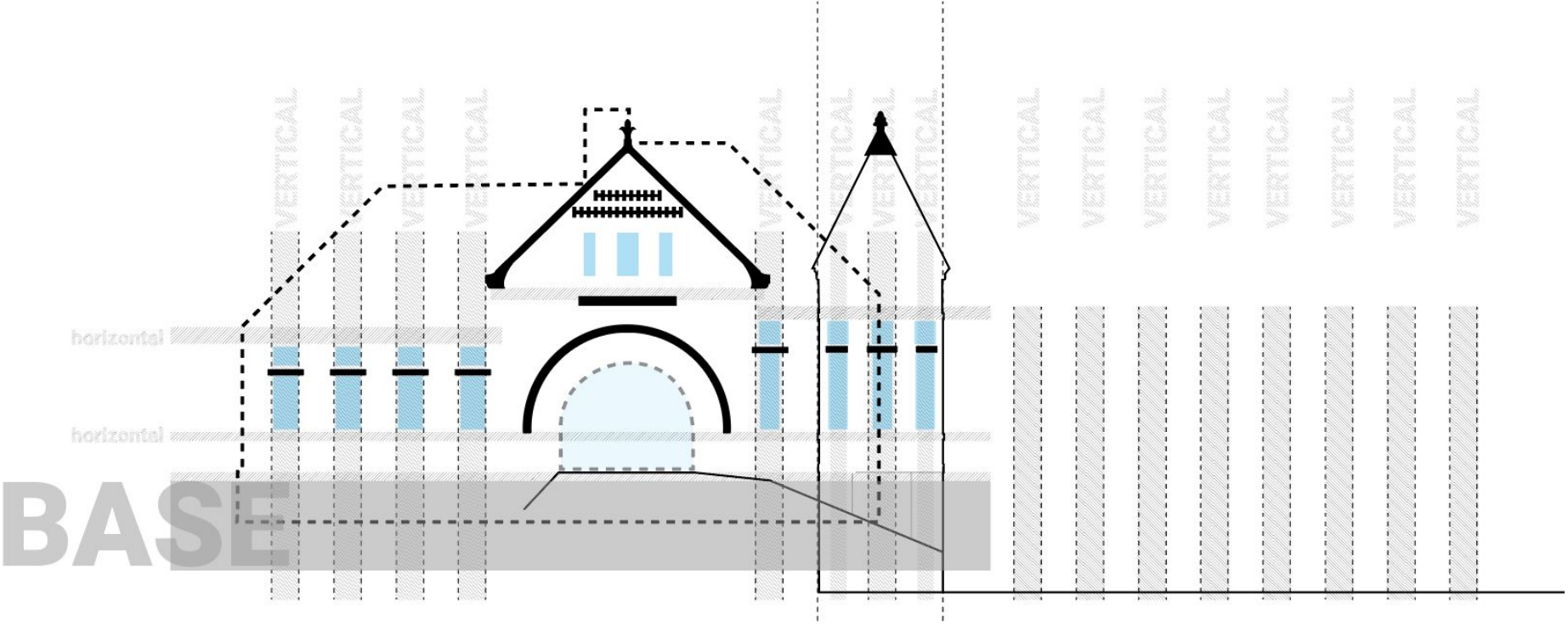


# EXTERIOR ANALYSIS

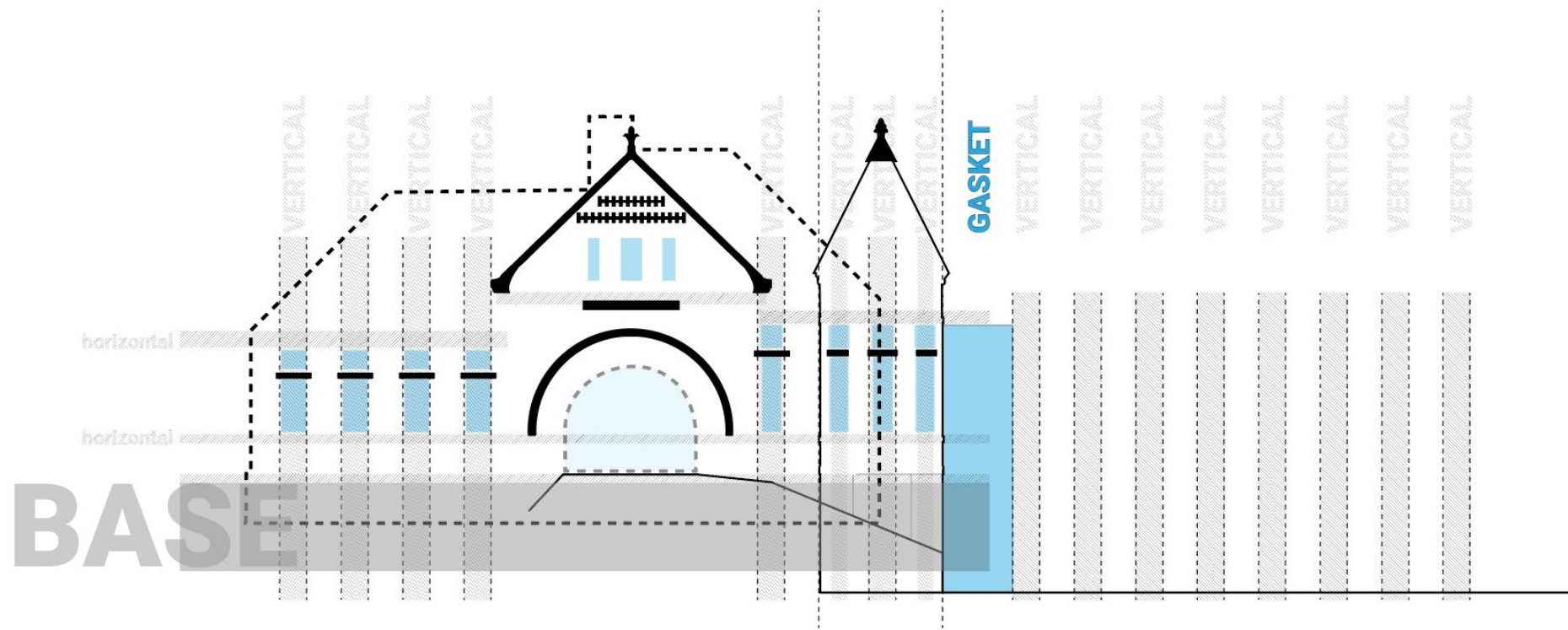




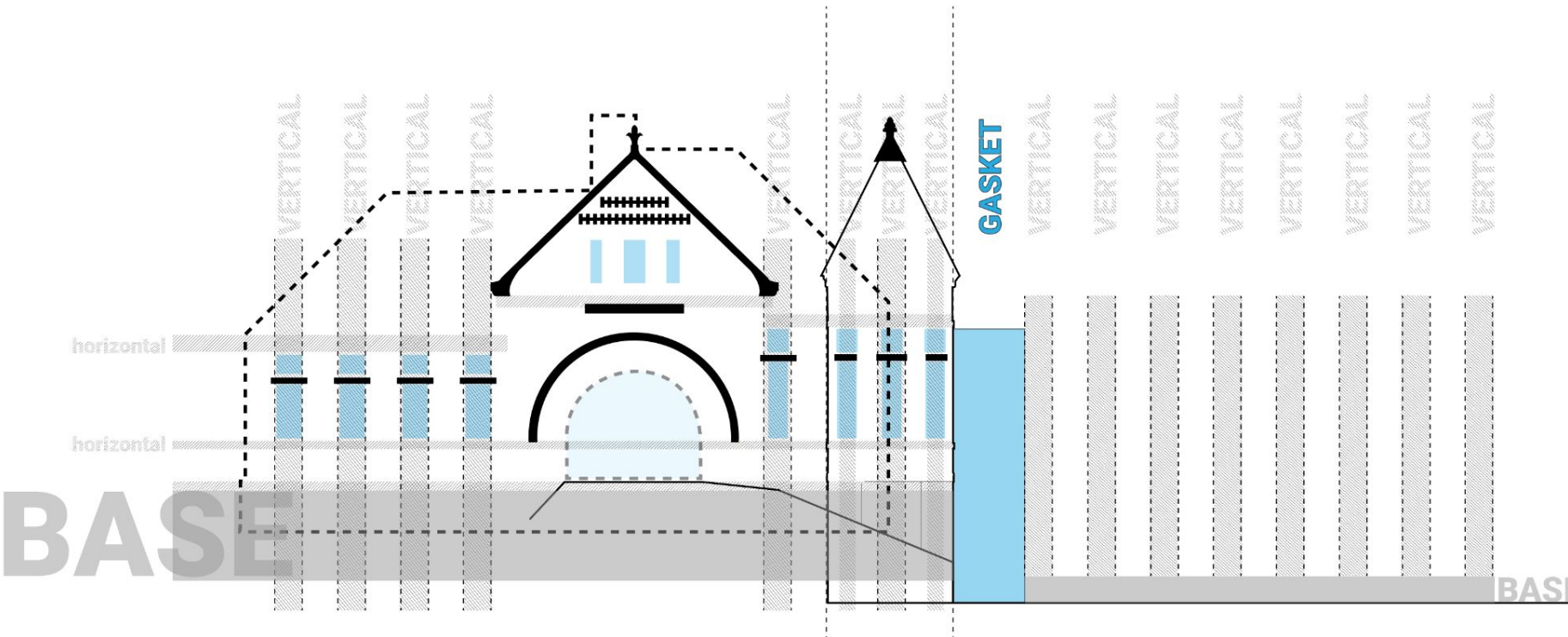
# EXTERIOR ANALYSIS



# EXTERIOR ANALYSIS

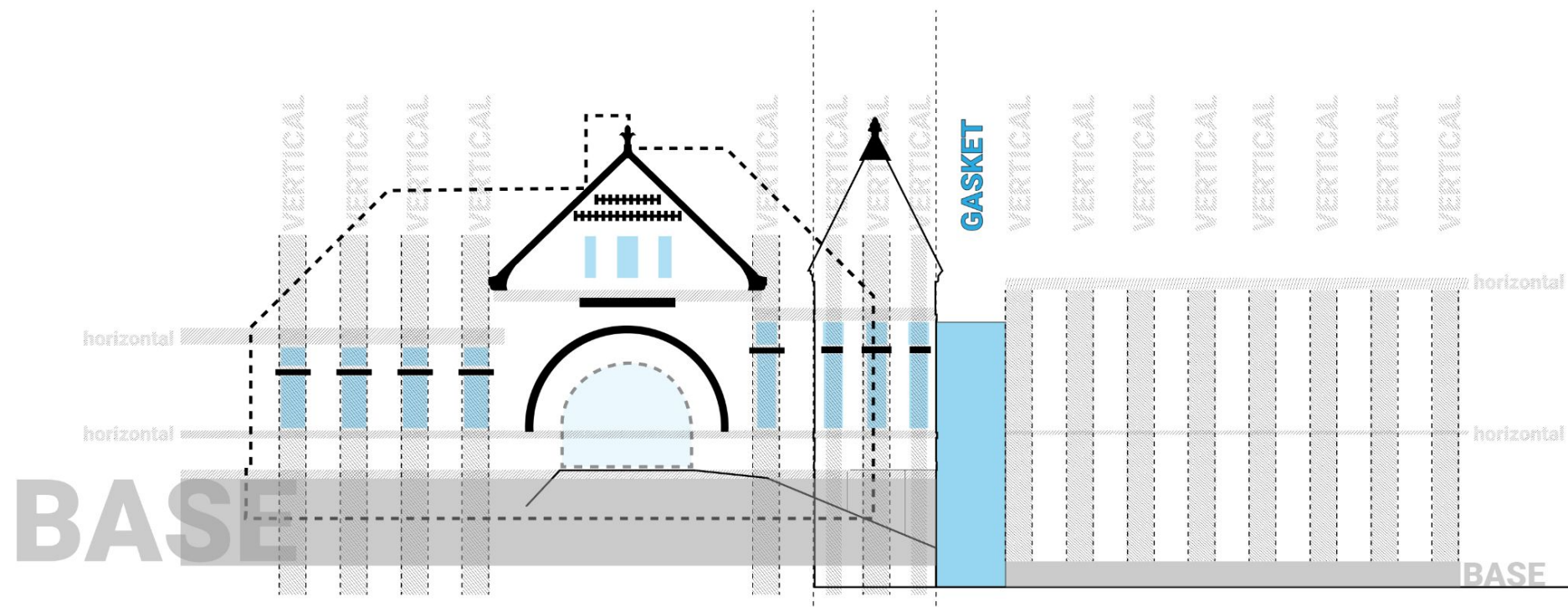


# EXTERIOR ANALYSIS

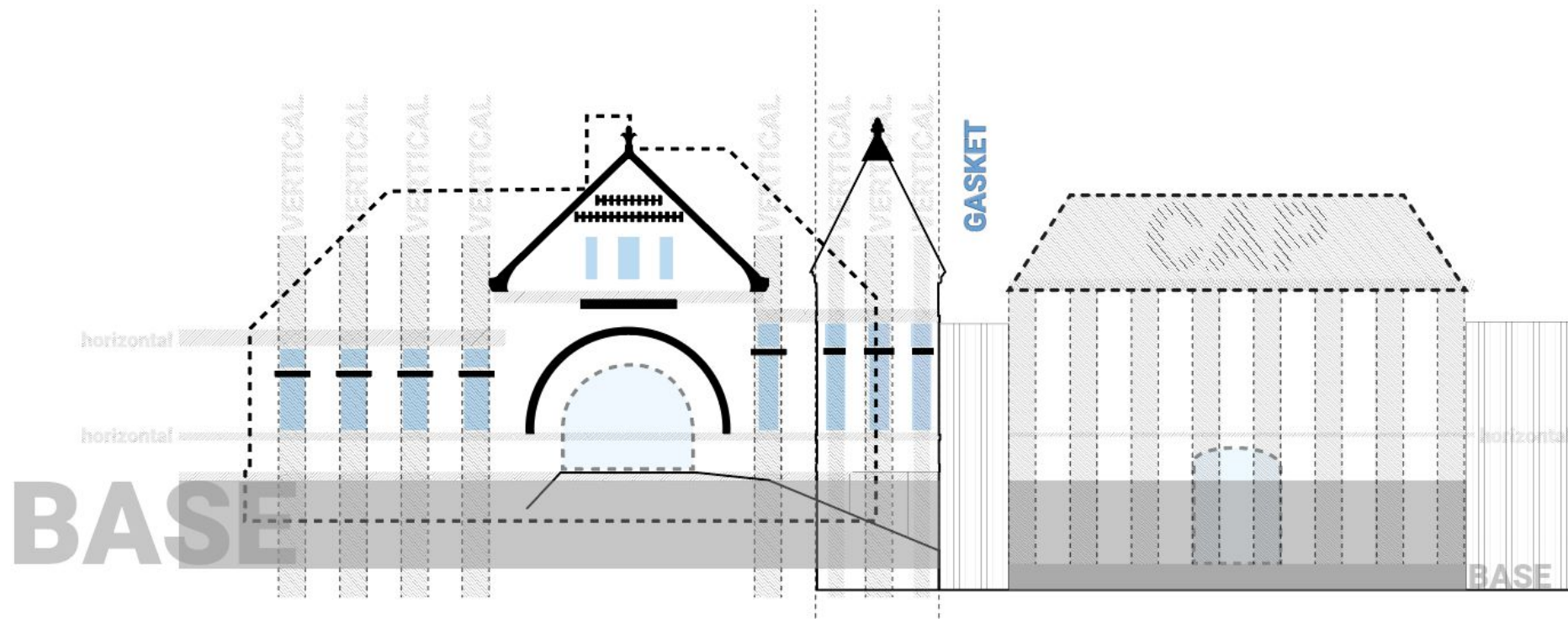




# EXTERIOR ANALYSIS

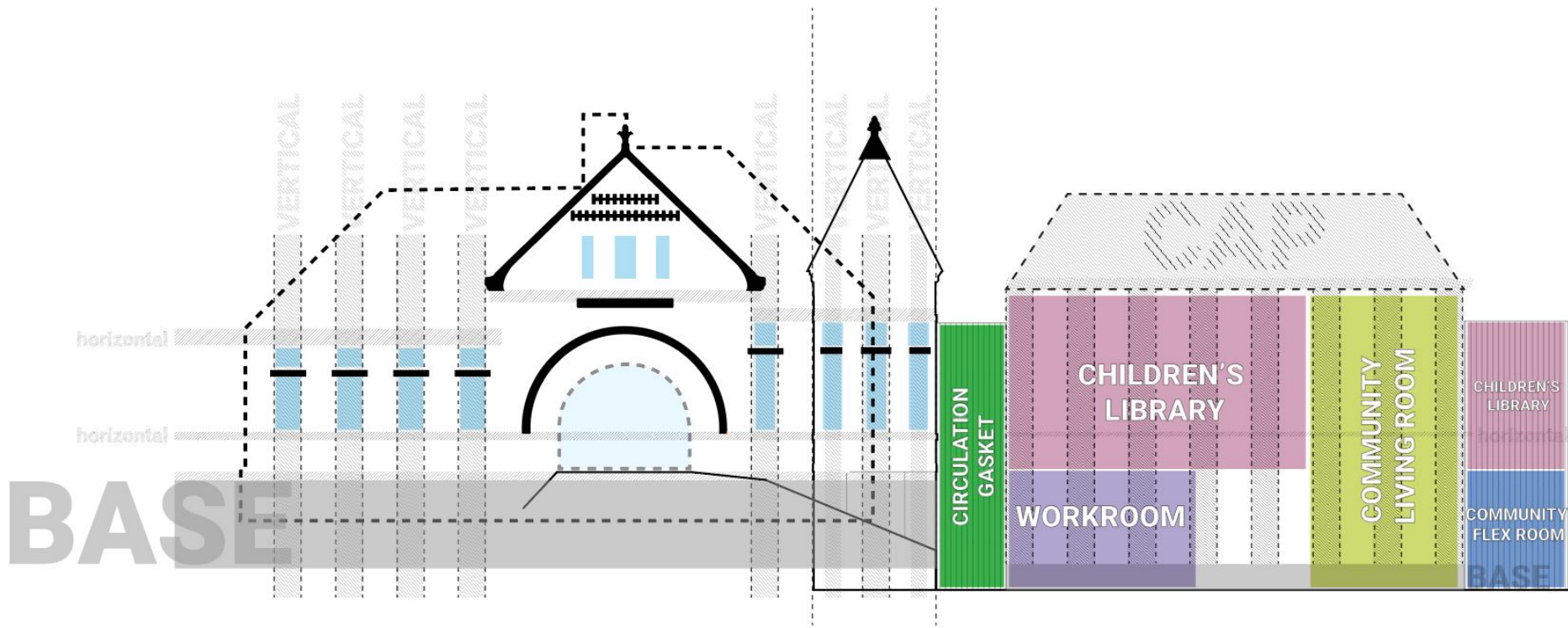


# EXTERIOR ANALYSIS

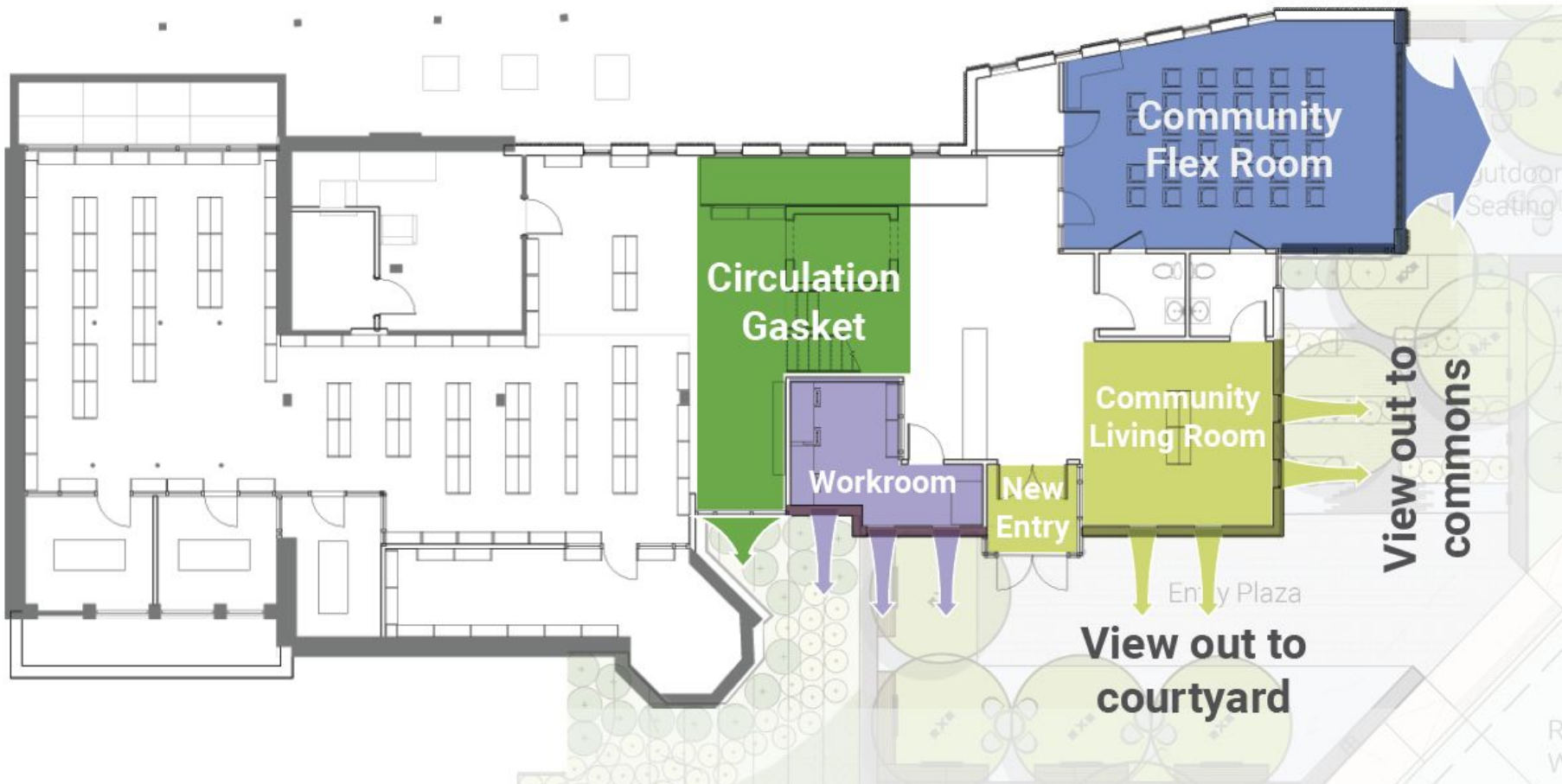




# EXTERIOR ANALYSIS



INTERIOR-EXTERIOR CONNECTION





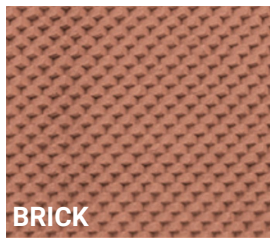
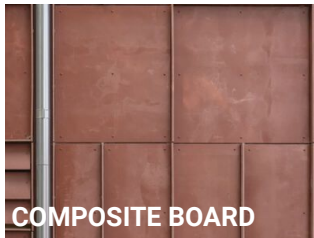
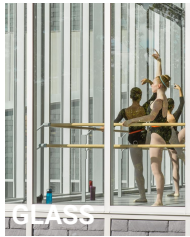


MATERIAL PALETTE

CAP



FIELD



BASE

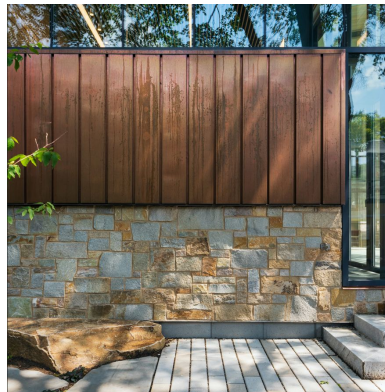


LANDSCAPE





# BUILDING COMPOSITION INSPIRATION





# LANDSCAPE INSPIRATION





# LANDSCAPE VISUALIZATION





# LANDSCAPE PLANTING IDEAS

TREES



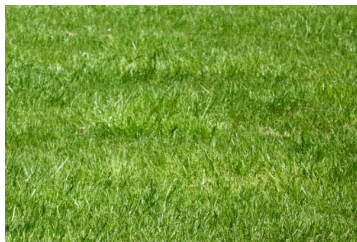
SHRUBS



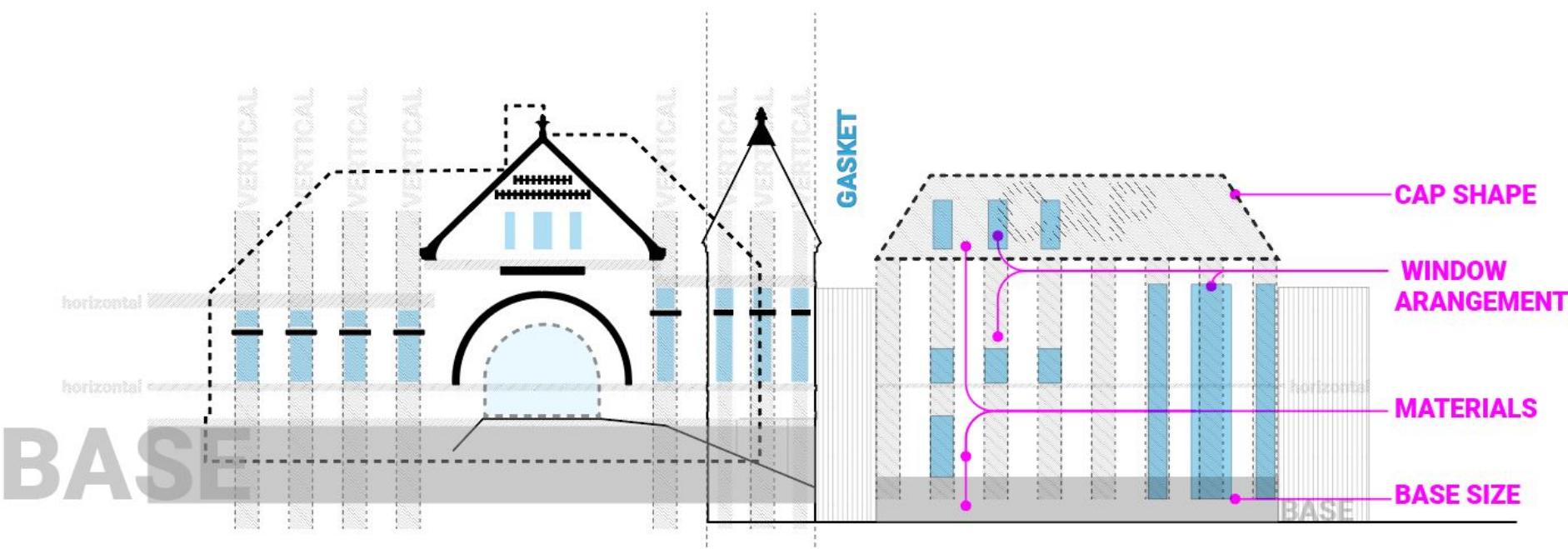
GROUNDPLANE



LAWN/  
MEADOW

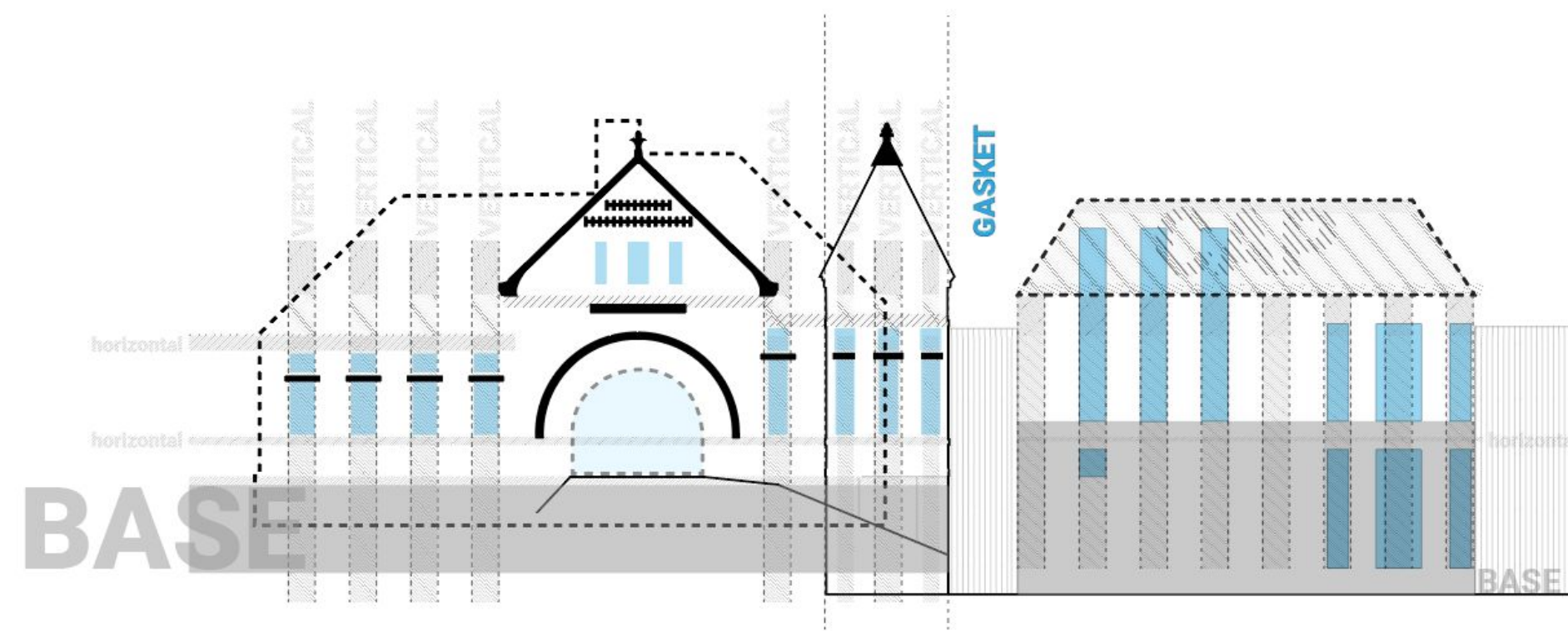


# REQUESTED FEEDBACK



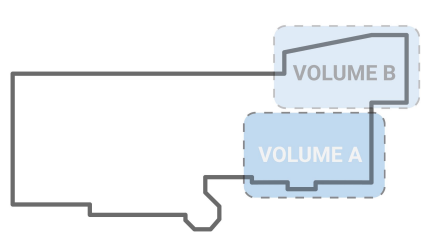


# STRATEGY 1: TALL BASE + PUNCHED OPENINGS





# STRATEGY 1: TALL BASE + PUNCHED OPENINGS

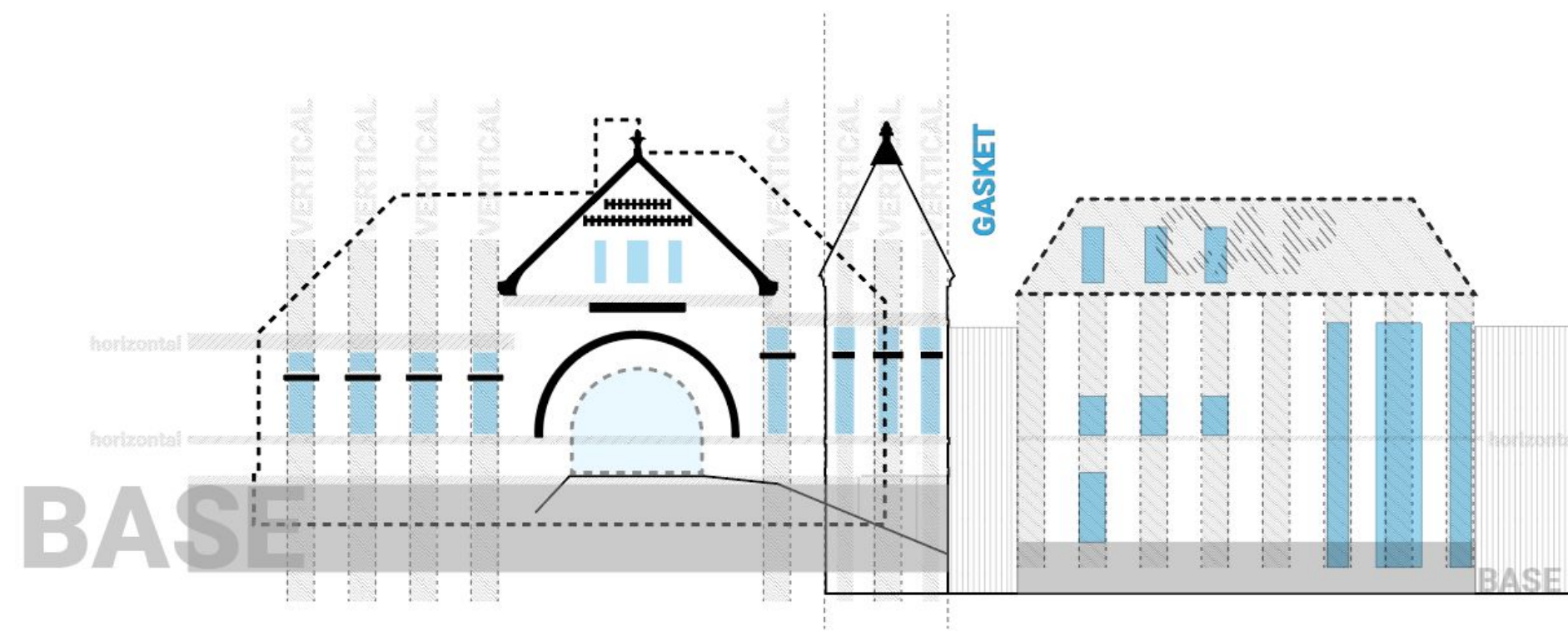


# STRATEGY 1: TALL BASE + PUNCHED OPENINGS

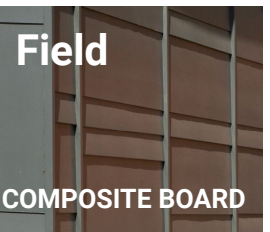
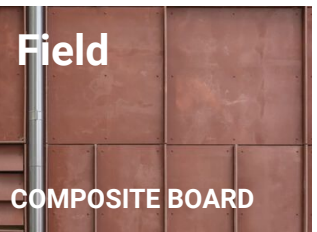
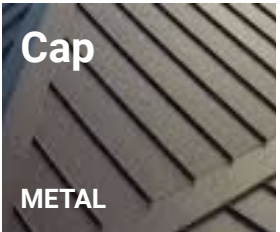
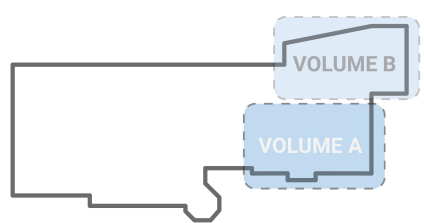
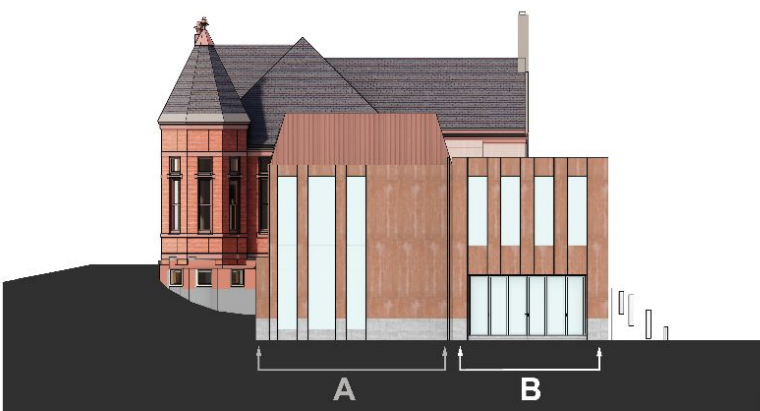




STRATEGY 2: VERTICAL CORNER



# STRATEGY 2: VERTICAL CORNER

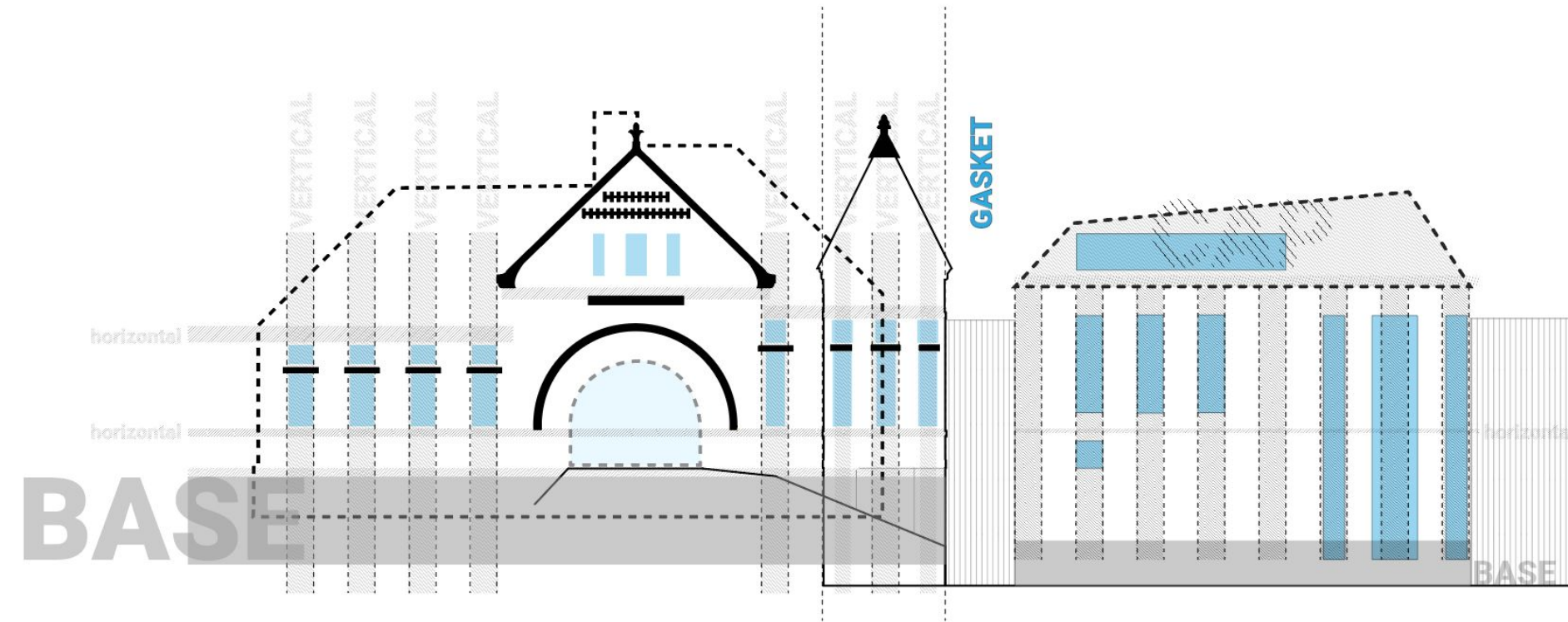




## STRATEGY 2: VERTICAL CORNER

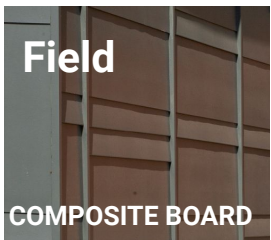
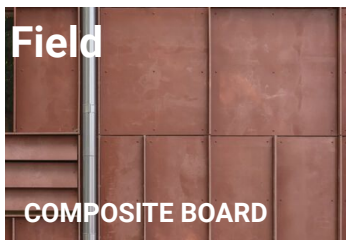
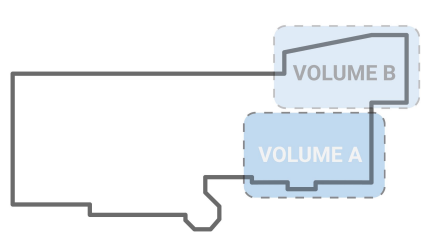
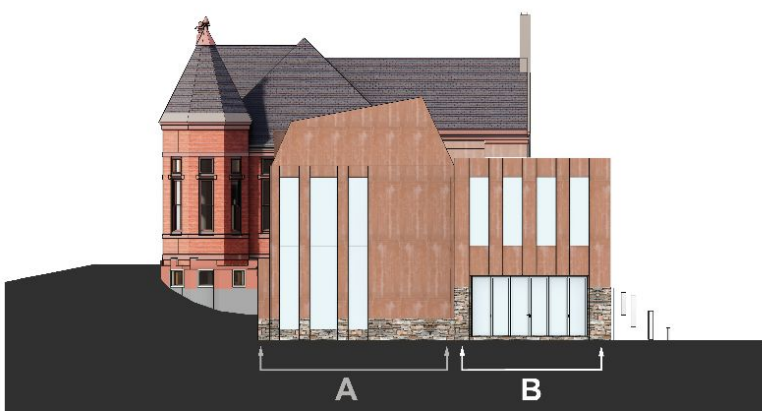


STRATEGY 3: SLOPED ROOF + DORMER





# STRATEGY 3: SLOPED ROOF + DORMER

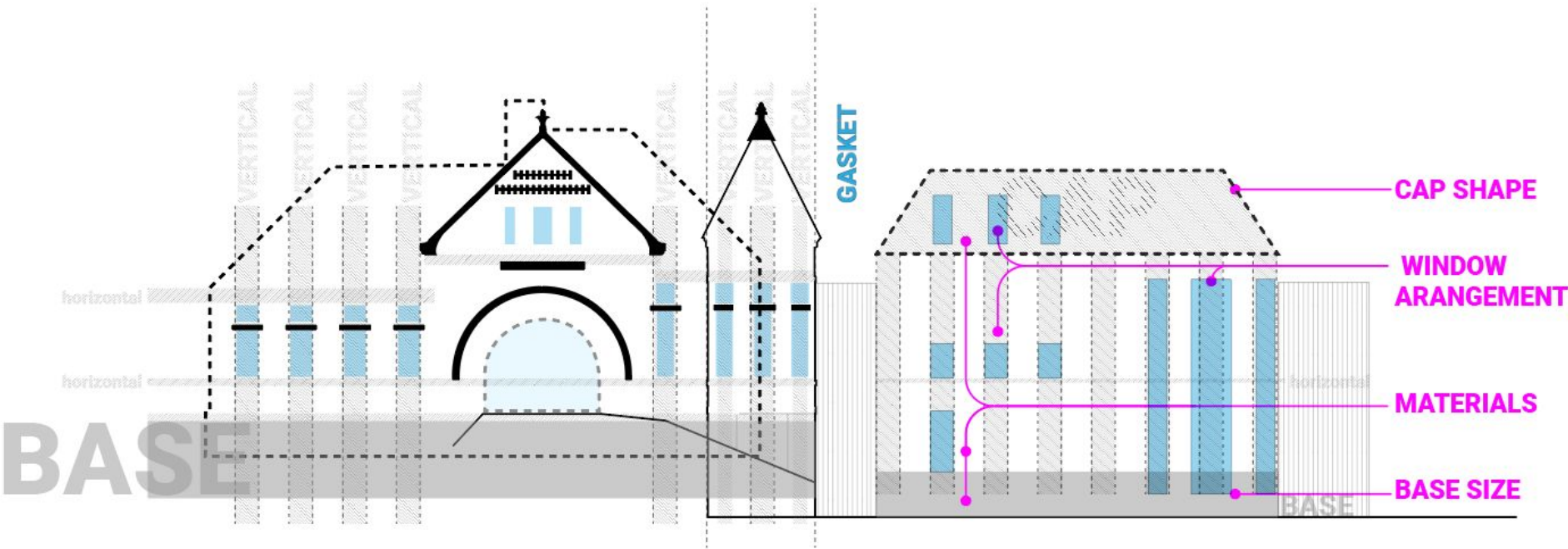


## STRATEGY 3: SLOPED ROOF + DORMER





# REQUESTED FEEDBACK

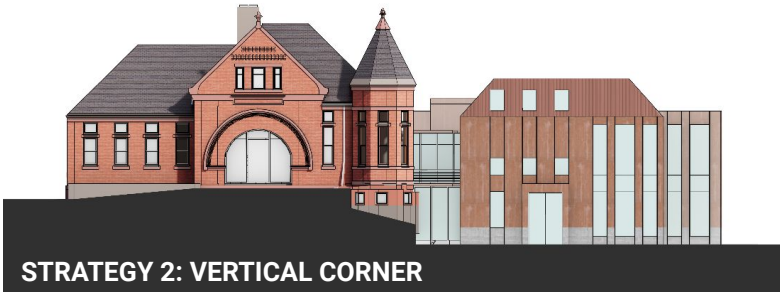
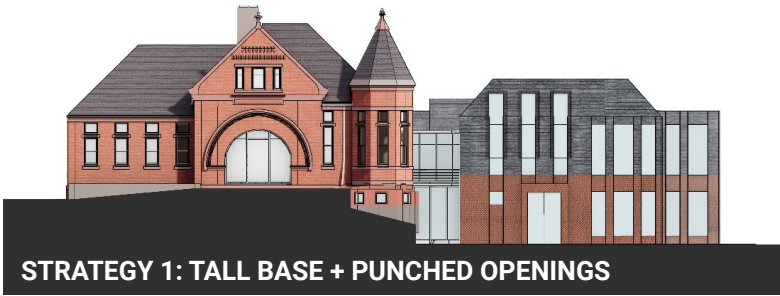


# Exterior Strategies





# SUMMARY





# Today's Agenda

## **Introductions (10 min)**

- Review Work Plan + Process Updates

## **Plan + Landscape Overview (20 min)**

- Program Review
- Building Plan Overview
- Landscape Plan Overview

## **Exterior Building (45 min)**

- Review Goals + Guiding Principles
- Review Existing Building Analysis + Massing Options
- Review Material Palette Strategies

## **Discussion + Next Steps (15 min)**



A photograph of a brick building, identified as the Randal Library, featuring a large arched window and a sign above it. The image is overlaid with a teal color and the text 'THANK YOU!!!'.

THANK YOU!!!





**End**

# PROPOSED SCHEME





EXISTING GRADE CHANGE



EXISTING FFE ~ +36'

PROPOSED COURTYARD ~ +24-25'

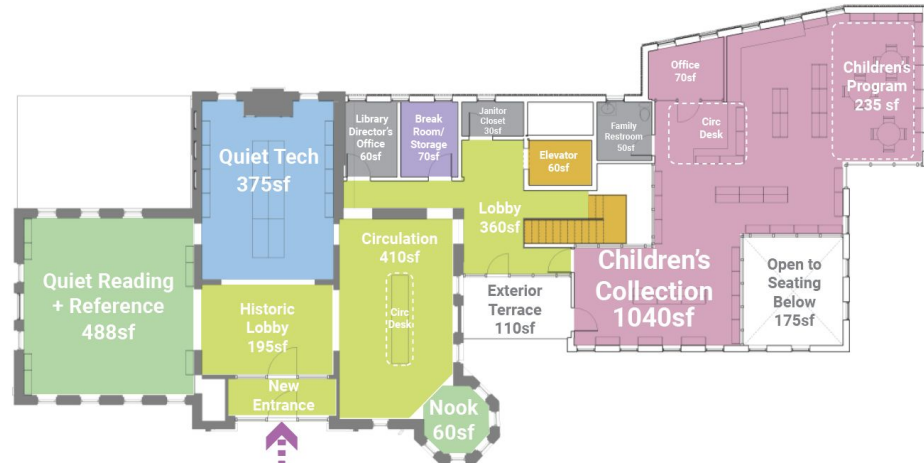
# UPDATE

- Gasket
- Cap
- Field
- Base
- Windows



# Open Corner Option

- Double height Community Living Room
- Larger Collection Space
- Library collection in Collections
- Storage in Community Meeting
- Storage and office in Children's Collection
- Circulation centrally located in gasket
- Small Meeting Rooms and Teen Lounge located off Collection Space



Level 2



Lower Level

## Exterior Vestibule





## Browsing and Arrival



## Community Living Room





# Meeting Rooms



# Collections





## Teen Lounge



# Community Room





# Community Room



## Circulation

UPDATE





# Historic Spaces



## Children's Collection





# Children's Collection



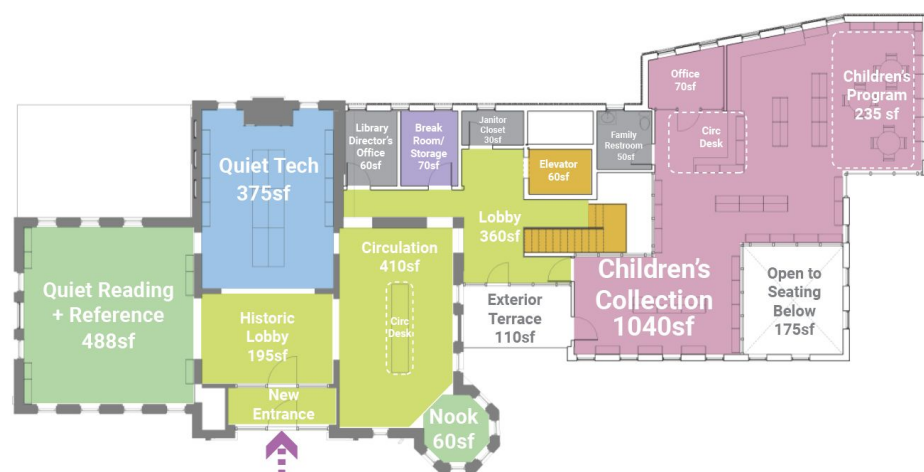
## Exterior Terrace





# Open Corner Option

- Double height Community Living Room
- Larger Collection Space
- Library collection in Collections
- Storage in Community Meeting
- Storage and office in Children's Collection
- Circulation centrally located in gasket
- Small Meeting Rooms and Teen Lounge located off Collection Space



Level 2



Lower Level

# Collection Size

## Calculations by dLAB

Classification	Shelf Height (inches)	Shelf vertical count	shelf width (feet)	bookcase count (one sided)	avg per LF	open		Totals
1-339	10.25	7	9	3	11	10%		2079
339-973	12.25	6	9	9	10	20%		4860
new non fiction	12	4	3	1	11	20		132
travel	11	4	3	2	15	20		360
oversize	15	2						0
							Non Fiction Total	7431
mystery	10.25	6	9	3	9	18%		1458
Romance	8.25	8	6	1	10.5	5%		504
Fiction	11.25	7	3	30	9	20%		5670
large print	12	3	3	4	9	8		324
Graphic Novels	12	3	3	1	14	15	Fiction Total	8082
YA Fiction	11	7	3	7	9	15%		1323
YA Graphic Novel	12	6	3	1	16	15		288
YA Non-fiction	13	5	3	1	14	20	Teen Total	1821
Childrens picture books	14	3	3	12	28			3024
childrens nonfiction/reference/poetry	16	4	3	2	25	5%		600
childrens nonfiction/reference/poetry	11.5	5	3	6	25	5%		2250
Kid's chapter books	12	5	2	2	13	5%		260
Kid's chapter books	12	5	3	8	13	5%		1560
Easy readers	10	6	3	8	26	10%		3744
Easy Readers	10	2	2.3	1	26			119.6
Baby	12	3	3	1	20			180
junior graphic novels	12	6	3	1	23			414
							Children's Total	12151.6

## Counts from Randall Library

### Adult

- 15,737 books
- 1,792 video
- 1,922 audio (books on CD/music CD)

### Young Adult

- 1,653 books
- 0 video
- 38 audio

### Children's

- 12,249 books
- 602 video
- 193 audio





# Collection Distribution



Level 2



Lower Level



# Today's Agenda **UPDATE**

## **Introductions (10 min)**

- Review Work Plan + Process Updates

## **Exterior Committee (45 min)**

- Field Trip Feedback
- Review Goals + Guiding Principles
- Review Existing Building Analysis + Massing Options
- Review Material Palette Options

## **Landscape (15 min)**

- Review Updated Plan
- Cistern Locations
- SD Estimate Review

## **Building Committee (60 min)**

- Review Updated Building Program
- Review Updated Plan Options

## **Discussion + Next Steps (15 min)**



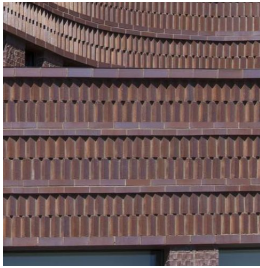
## Next Steps

# UPDATE

- **WS4**
  - **MEPFP Engineer update**
  - **Landscape Design Update**
- **Schedule dept meetings**
- **Design Development Phase**
- **Exterior Materials**

MATERIAL PALETTE

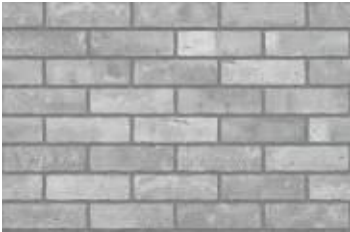
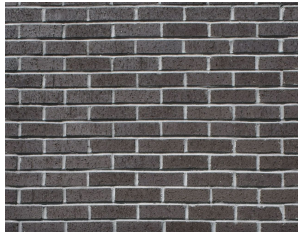
CAP



FIELD



BASE



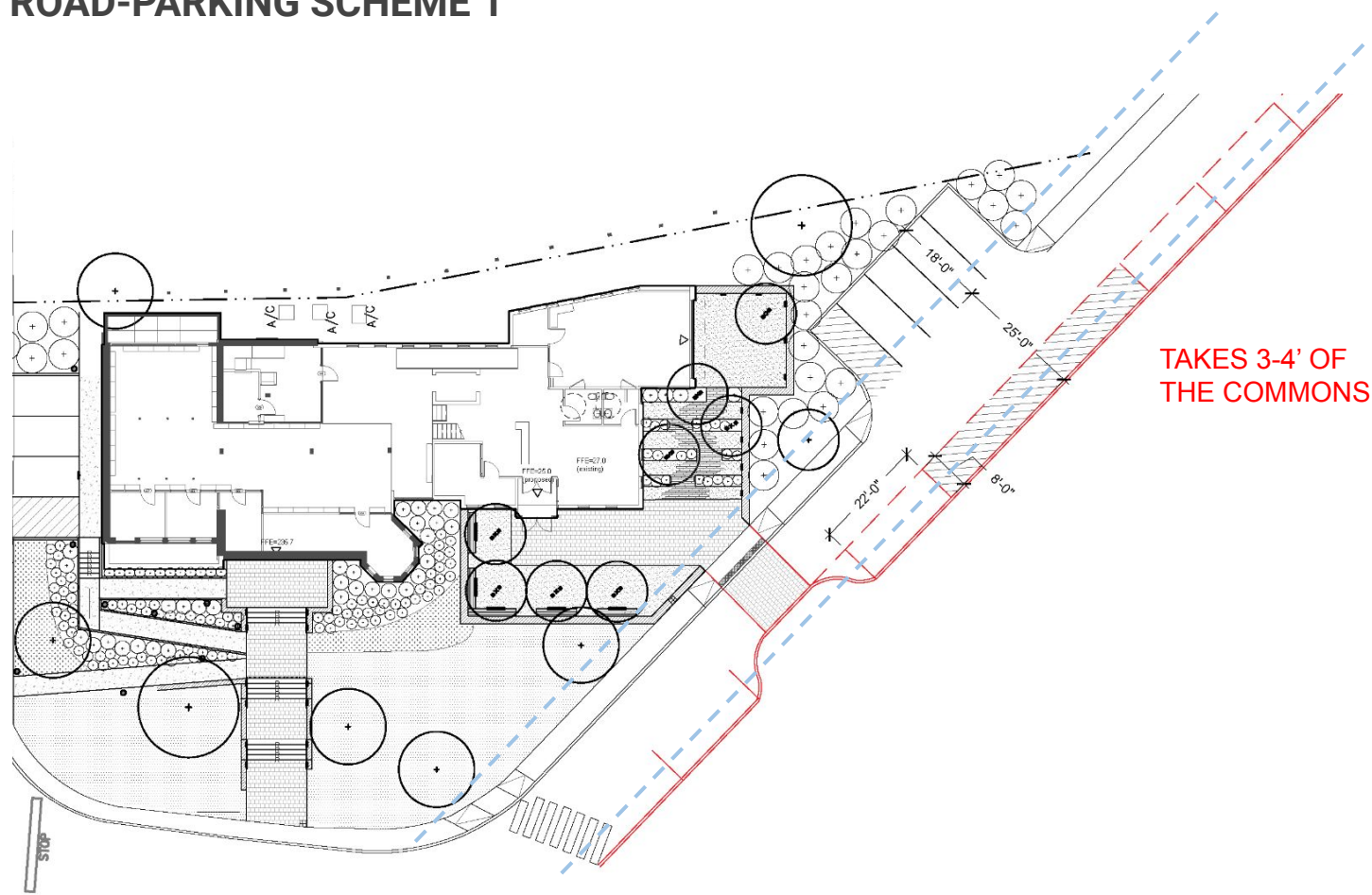


# HISTORIC CONTEXT



# COMMON ROAD-PARKING SCHEME 1

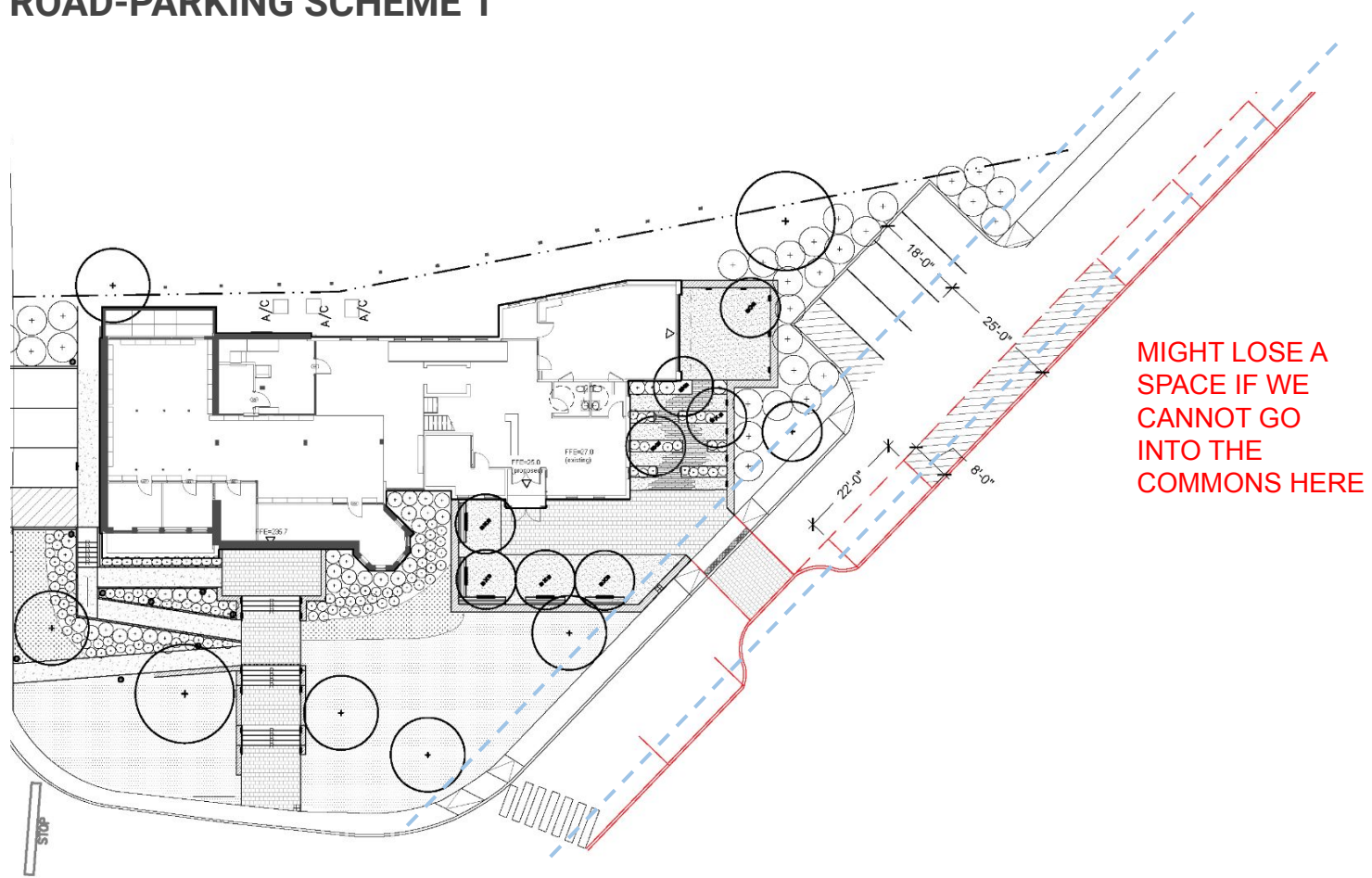
One-way





# COMMON ROAD-PARKING SCHEME 1

One-way



## One-way

