



Nashoba Regional School District FY 2022 Budget Proposal

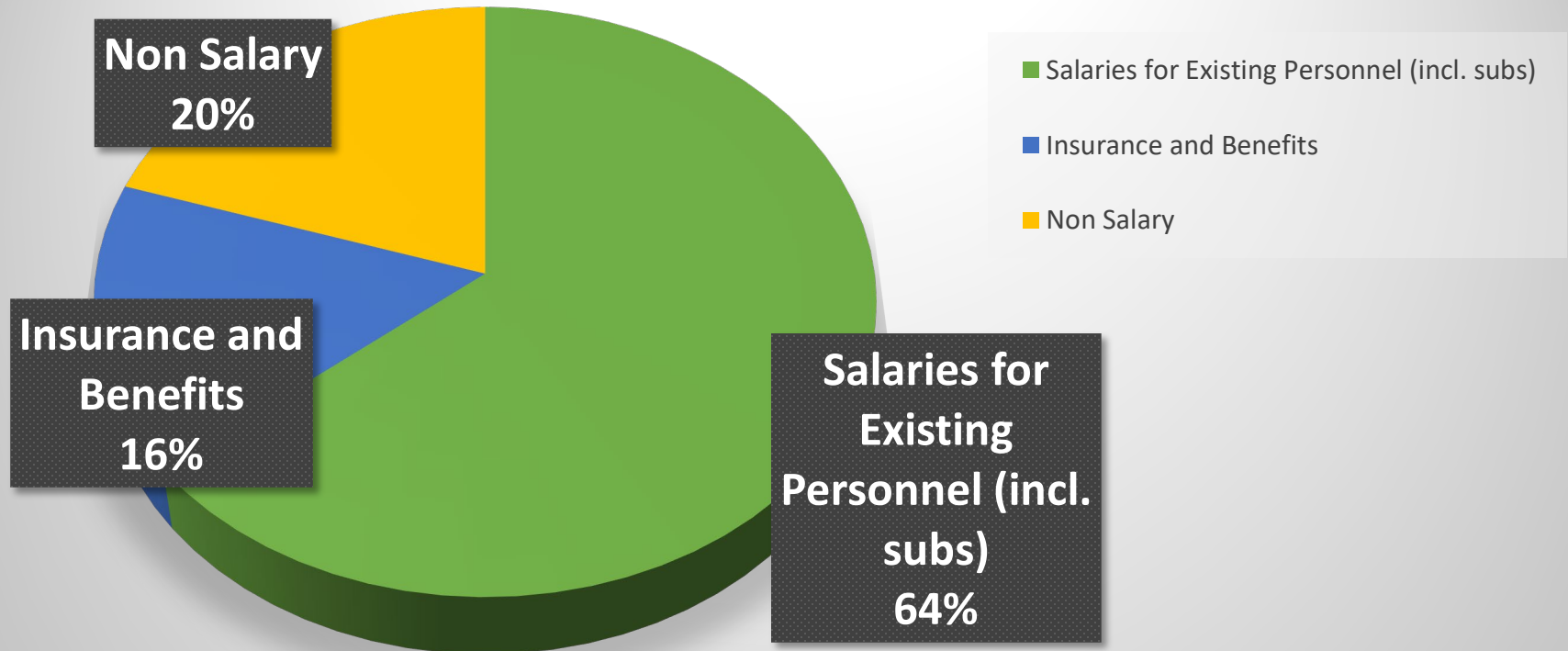
Presented by

**Brooke Clenchy, Superintendent of Schools
Elaine Sanfilippo, Vice Chair, School Committee
Steve Rubinstein, School Committee Member
Rich Eckel, School Committee Member**



Nashoba Regional School District FY22 Proposed Budget

	FY21 Voted	FY22 Voted	Dollar Increase	Percent Change
Total Budget	\$58,029,848	\$59,222,941	\$1,193,093*	2.06%





Budget Overview of Bolton Assessment

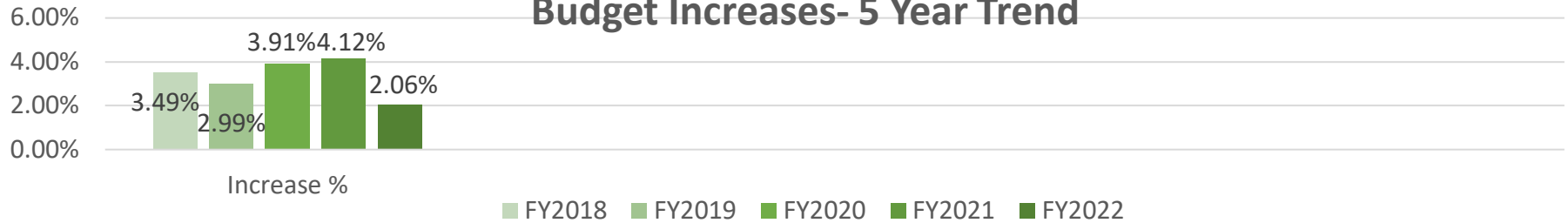
	Amount	What is it?
FY22 Voted Budget	\$59,222,941	2.06% increase over FY21
High School Debt	\$585,042	Assessment based on resident Student pop. per regional agreement
Local Revenue	\$10,999,601	State and locally generated revenue (incl. E&D, Ch70, Medicaid)
Amount Assessed	\$47,638,298	Total Assessed to towns as taxes
Fixed Assessment	\$26,891,383	Minimum local contributions, determined by State
Variable Assessment	\$20,746,915	Remainder determined by 5 Yr. rolling avg. per regional agreement

Town	Five Year Rolling Assessment Percentage	Fixed Assessment	Variable Assessment	FY 2022 Net Debt Assessment	Capital Assessment Credit	FY 2022 Total Assessment	FY 2021 Total Assessment	FY 2022 Total Dollar Increase	FY 2022 Percentage Increase
Stow	3.009%	\$10,177,963	\$7,678,178	\$203,749	\$0	\$18,059,890	\$18,135,162	-\$75,272	-.42%

Historical Assessment	FY19	FY20	FY21	FY22
Stow Assessment * (%)	4.21%	-.13%	1.37%	-.42%
* Total District Excess & Deficiency (E&D) as Local Revenue	\$.8 M	\$.75 M	\$1 M	\$1.2 M



Budget Increases- 5 Year Trend



Assessment Changes – 5 Year Trends

