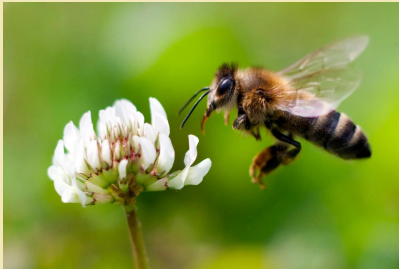


Help the Bees

Stow Girl Scout Troop 62465

Not All Bees Are in Trouble

Many bee species are doing quite well, and don't need help. Helping these species can harm other struggling species. Instead, visit beecology.wpi.edu to learn more about species in decline near you.

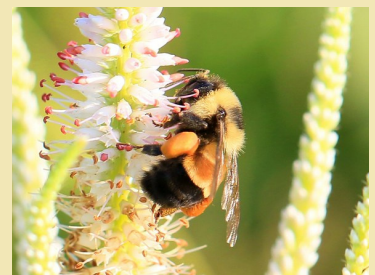


Honey Bees are Not Native

Honey bees are a great way to make your yard more pollinator friendly, but because they are non-native they can negatively impact native species. While honey bees are helpful pollinators it is also important to support native species by planting bee-friendly plants.

Everything is Connected

Protecting our native pollinators benefits everyone – the other plants and animals in the ecosystem, and you! Increased numbers of pollinators means increased biodiversity. That means more native plants thrive and more animals in the ecosystem get a proper diet.



The Right Flowers Matter

A common misconception is that honey bees pollinate everything when the flowers are actually built for wild bees. Over time, flowers have adapted for specific types of bees to pollinate their specific pollen. Flowers have also adapted to things like the size of wild bees as well as the length of their tongues. Planting a range of flowers can help accommodate different bee species and their individual needs.

Best Native Plants for Bees



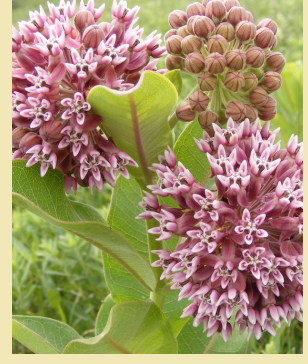
Aster



Joe-Pye Weed



Purple Flower
Raspberry



Milkweed

Things to Avoid

- Pesticides and fertilizers
- Golf-course-style lawns
- Non-native plants and ornamentals
- Fully removing fall leaves
- Cutting down dead plants

Things to Do

- Leave patches of bare sandy soil for ground nesting bees
- Plant native flowers (listed above)
- Learn about local bees
- Support citizen science projects (listed below)

*Learn More
About Bees*

- thebeeconservancy.org
- beecology.wpi.edu

