

Feb 2, 2021

Town of Stow
Conservation Commission
380 Great Road
Stow, MA 01775

Re: Wetland Resource Area Inspection Athens Road, Stow

Dear Conservation Commission

In response to the Agent's letter dated January 25, 2021 on comments and performed in-field edits on the existing wetland flagging of resource areas located at the Athens Road in Stow, MA; Goddard Consulting has the following comments:

Sheet 1

- a- Flag GC110 was relocated in the field approx. 8-10 upgradient
Goddard Consulting is ok with this change. Survey is needed and put on the plan
- b- Flag GC112 was missing in the field and should be placed higher than other flags in the vicinity.
The original GC112 flag was observed in the field within a stand of white pine, highbush blueberry and poison ivy. It is located 10-ft higher than the other flags and therefore is consistent with what the agent wanted to see in the field.
- c- Please check delineation at flags GC131-139. Field indicators appear to be located 1-10 ft above existing line.
GC131-139 was revised approx. 5-10-ft upgradient to include yellow birch, highbush blueberry, and ferns with flags GC132r-GC138r and GC 139a which will connect to the old GC139. These flags will be surveyed and put-on plans
- d- Flag D14 should be 3-ft higher
Goddard Consulting accepts this change located in the field and it will be reflected on updated plans
- e- Wetland located off-site between Flag D14 and E5 needs to be shown on plans.
This wetland was delineated in the field with series E1-8 and will be put on the plans

- f- There are two GC100 on the plans. One should be GC101.
See attached sketch showing these changes and the line extended to the property line.

Sheet 2

- a. MAHW line is confusing on the plan.
Goddard Consulting has created a sketch to fix this incorrect portion of the plans
- b. A flag A14a was added in the field.
Goddard Consulting agrees to this new flag. It will be surveyed and put on the plans
- c. Added flag A23 to replace 24.
Goddard Consulting agrees to this new flag. It will be surveyed and put on the plans
- d. IVW near stone building
 - i. Flag #2 missing
This flag was rehung in the field
 - ii. Area near old roadbed needs to be re-inspected for potential resource areas
Goddard Consulting requests that this area be investigated in the field together.
- e. Flags GC5-13 were found in field but are not on the plans.
These flags need to be picked by survey and added to the plans
- f. GC31-36 were found in field but are not on the plans.
These flags need to be picked by survey and added to the plans
- g. Flag GC50 was relocated 5-ft upgradient
Goddard Consulting agrees to this new flag. It will be surveyed and put on the plans
- h. Flags C-15 and C-17 were found in field but are not on the plans.
These flags need to be picked by survey and added to the plans
- i. Additional wetland maybe along flags C-53 to 64.
Goddard Consulting added flags C61-a, C62a, C63A to include area of ferns and red maples

Sheet 3-no changes

Sheet 4

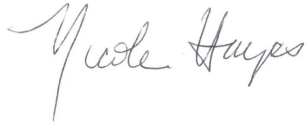
Items a-e are not performed by Goddard Consulting

- f. Flags C3-7 were missing from field
Goddard Consulting rehung these flags. Survey needs to pick up and put on plan
- g. MAHW flags 31 and 32 seem in an odd location
Goddard Consulting moved these flags to correspond with riverfront area. Survey needs to pick up and put on plan

Sheet 5- no changes

Sheet 6- still needs to be reviewed

Goddard Consulting, LLC.

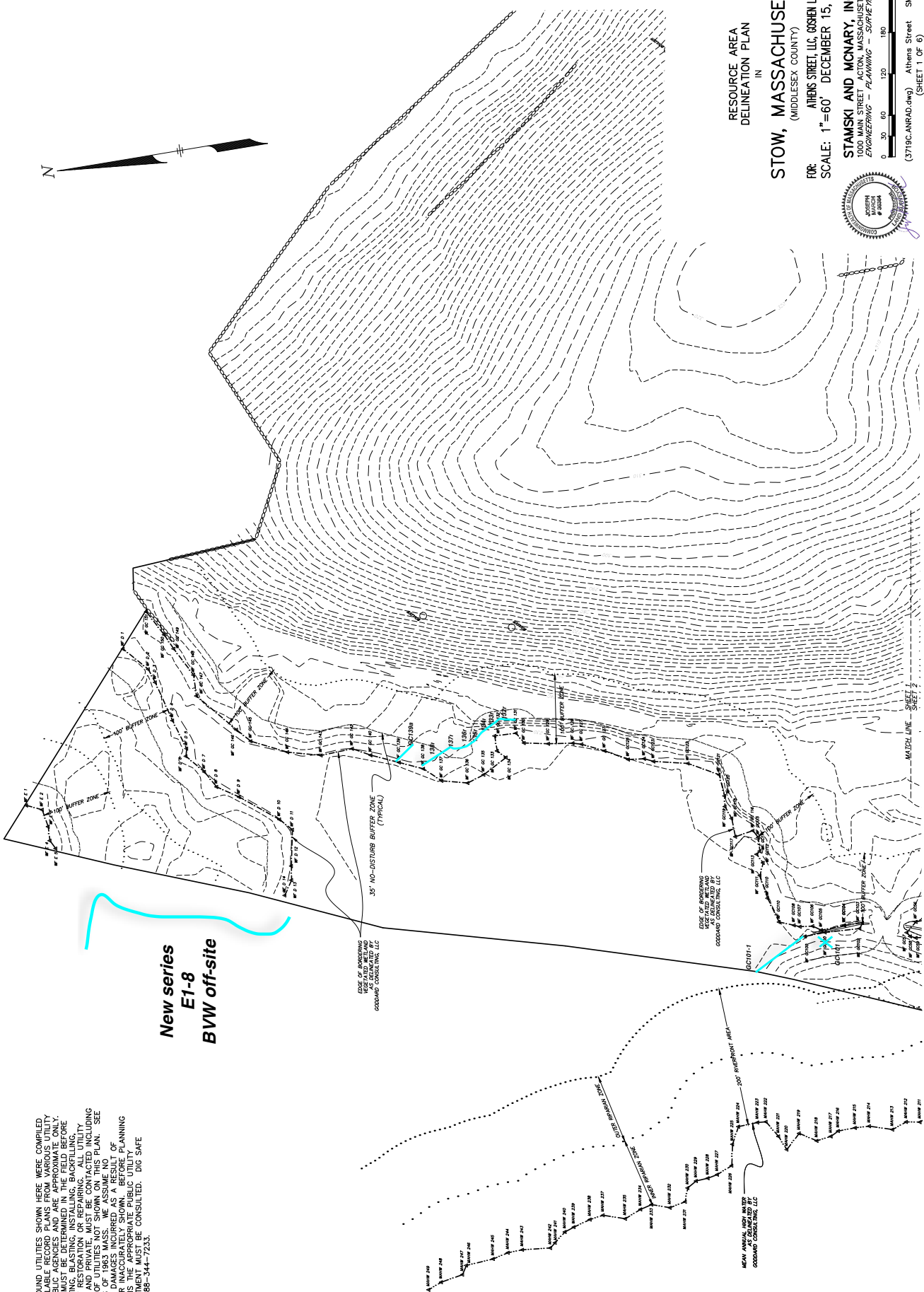
A handwritten signature in cursive script that reads "Nicole Hayes". The signature is written in a dark ink and is positioned below the company name.

Nicole Hayes, PWS
Senior Wetland Scientist

UTILITY NOTE:

ALL UNDERGROUND UTILITIES SHOWN HERE WERE COMPILED ACCORDING TO AVAILABLE RECORD PLANS FROM VARIOUS UTILITY COMPANIES. THE LOCATION OF UTILITIES SHOWN HERE IS BASED ON THE ACTUAL LOCATIONS MUST BE DETERMINED IN THE FIELD BEFORE DESIGNING, EXCAVATING, BLASTING, INSTALLING, BACKFILLING, GRADING, PAVEMENT RESTORATION OR REPAIRING, AND UTILITIES THOSE IN CONTROL OF UTILITIES NOT SHOWN ON THIS PLAN. SEE CHAPTER 370, ACTS OF 1963 MASS. WE ASSUME NO LIABILITY FOR UTILITIES SHOWN HEREIN AS THEY ARE NOT OF OUR OWNERSHIP. THE APPROPRIATE PUBLIC UTILITY ENGINEERING DEPARTMENT MUST BE CONSULTED. DIG SAFE TELEPHONE No. 1-888-344-7233.

**New series
E1-8
BWV off-site**



RESOURCE AREA
DELINEATION PLAN

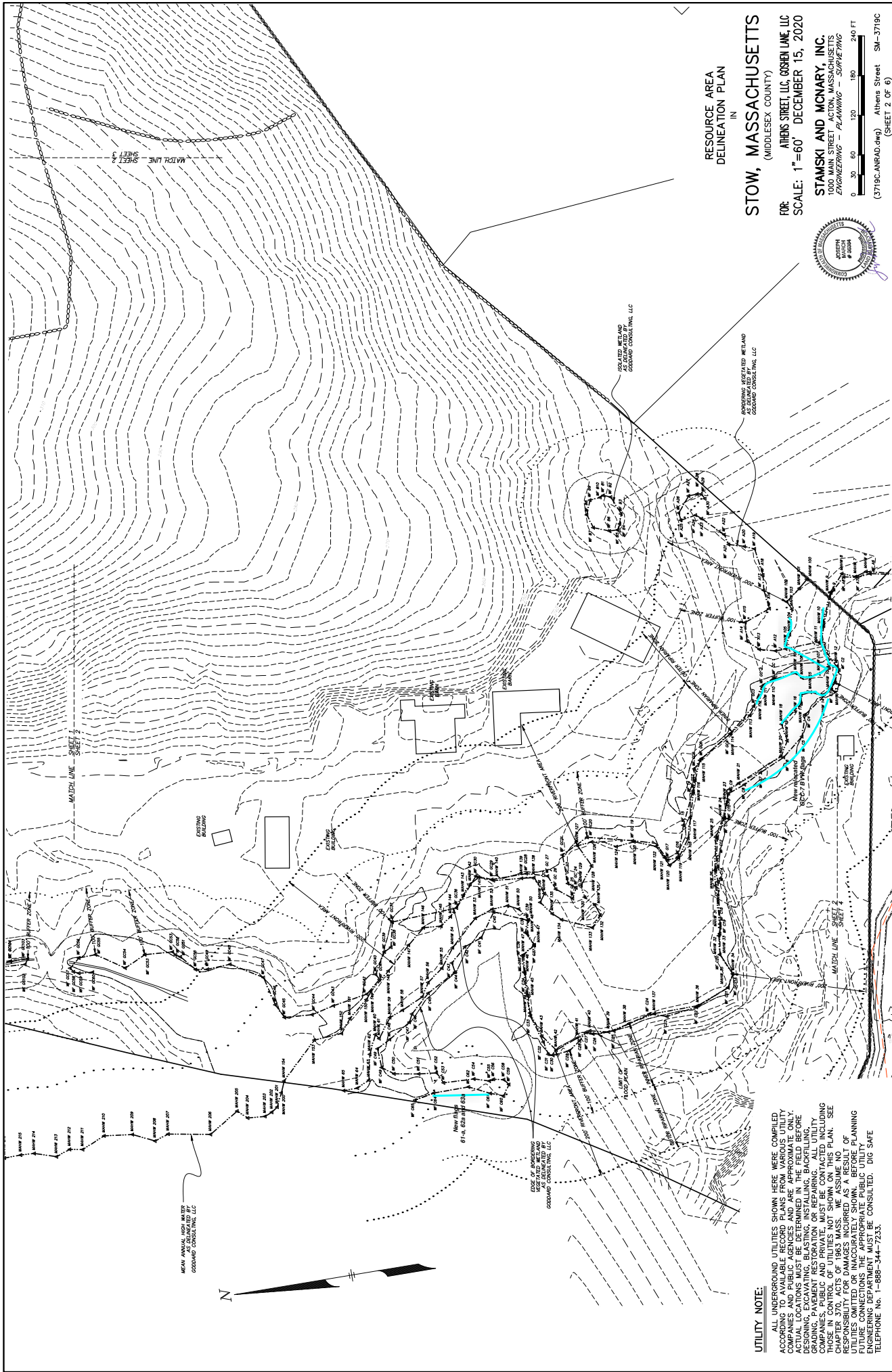
IN
STOW, MASSACHUSETTS
(MIDDLESEX COUNTY)

FOR: **ATHENS STREET, LLC, GOSHEN LANE, LLC**
SCALE: **1"=60'** DECEMBER 15, 2020

STAMSKI AND MCNARY, INC.
1000 MAIN STREET, ACTION, MASSACHUSETTS
ENGINEERING - PLANNING - SURVEYING



0 30 60 120 180 240 FT
(3719C.AN.RAD.dwg) Athens Street SM-3719C
(SHEET 1 OF 6)



RESOURCE AREA
DELINEATION PLAN

IN
STOW, MASSACHUSETTS
(MIDDLESEX COUNTY)

FOR: ATHENS STREET LLC, GOSHEN LANE, LLC
SCALE: 1"=60' DECEMBER 15, 2020

STAMSKI AND MCNARY, INC.
1000 MAIN STREET, ACTON, MASSACHUSETTS
ENGINEERING - PLANNING - SURVEYING

0 50 100 150 200 250 FT
(3719C.AMRAD.dwg) Athens Street SM-3719C
(SHEET 2 OF 6)



UTILITY NOTE:
ALL UNDERGROUND UTILITIES SHOWN HERE WERE COMPILED
ACCORDING TO AVAILABLE RECORD PLANS FROM VARIOUS UTILITY
COMPANIES AND PUBLIC AGENCIES AND ARE APPROXIMATE ONLY.
DETAILED LOCATIONS MUST BE DETERMINED AND FIELD BEFORE
GRADING, PAVEMENT RESTORATION OR REPAIRING. ALL UTILITY
COMPANIES, PUBLIC AND PRIVATE, MUST BE CONTACTED INCLUDING
MASSACHUSETTS DEPARTMENT OF TRANSPORTATION AND
CHAPTER 370A OF 1963 MASS. WE ASSUME NO RESPONSIBILITY FOR
UTILITIES OMITTED OR INACCUATELY SHOWN. BEFORE PLANNING
ENGINEERING DEPARTMENT MUST BE CONSULTED. DDC SAFE
TELEPHONE No. 1-888-344-7233.