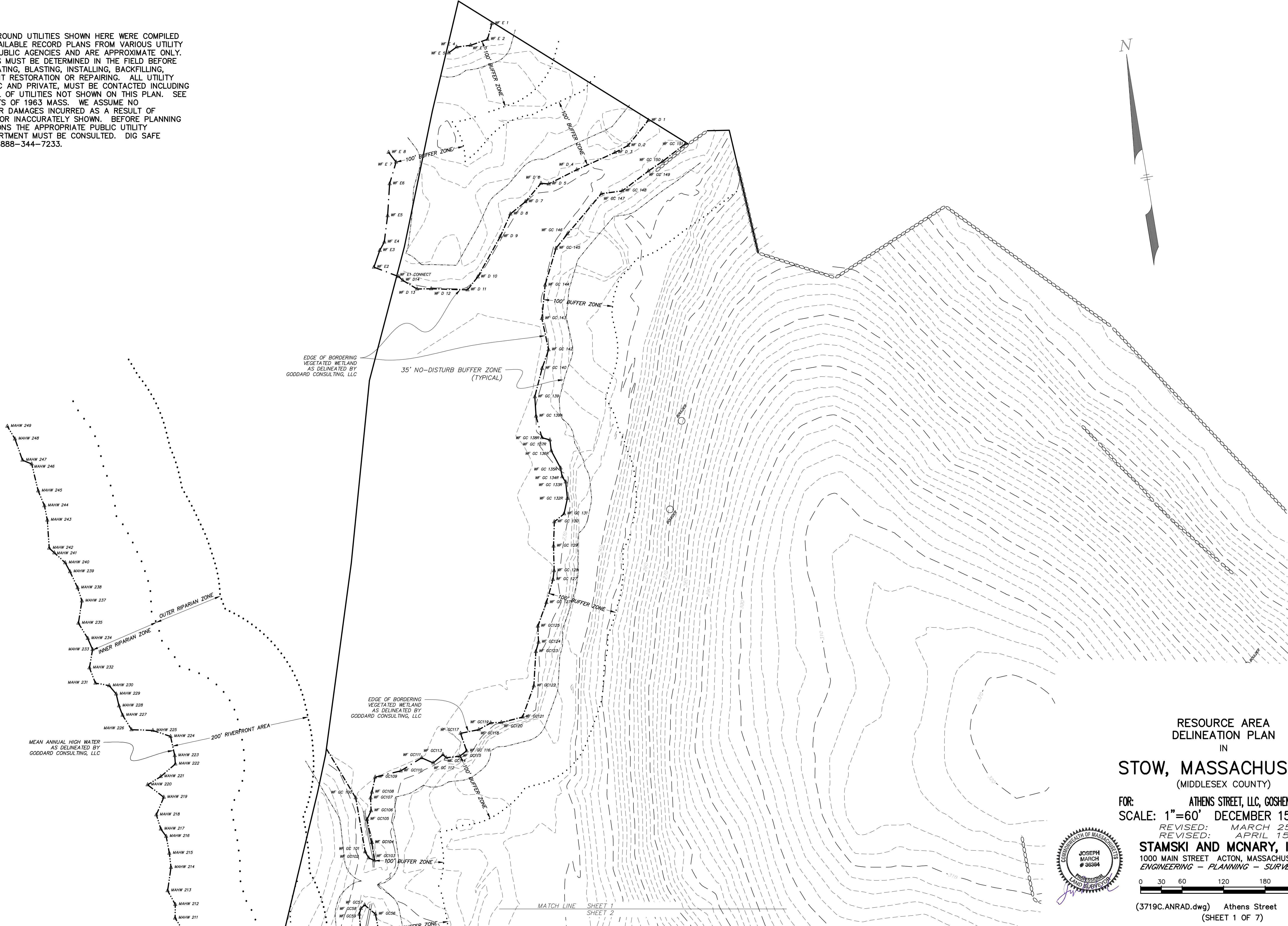


UTILITY NOTE:

ALL UNDERGROUND UTILITIES SHOWN HERE WERE COMPILED ACCORDING TO AVAILABLE RECORD PLANS FROM VARIOUS UTILITY COMPANIES AND PUBLIC AGENCIES AND ARE APPROXIMATE ONLY. ACTUAL LOCATIONS MUST BE DETERMINED IN THE FIELD BEFORE DESIGNING, EXCAVATING, BLASTING, INSTALLING, BACKFILLING, GRADING, PAVEMENT RESTORATION OR REPAIRING. ALL UTILITY COMPANIES, PUBLIC AND PRIVATE, MUST BE CONTACTED INCLUDING THOSE IN CONTROL OF UTILITIES NOT SHOWN ON THIS PLAN. SEE CHAPTER 370, ACTS OF 1963 MASS. WE ASSUME NO RESPONSIBILITY FOR DAMAGES INCURRED AS A RESULT OF UTILITIES OMITTED OR INACCURATELY SHOWN. BEFORE PLANNING FUTURE CONNECTIONS THE APPROPRIATE PUBLIC UTILITY ENGINEERING DEPARTMENT MUST BE CONSULTED. DIG SAFE TELEPHONE No. 1-888-344-7233.



RESOURCE AREA
DELINEATION PLAN
IN
STOW, MASSACHUSETTS
(MIDDLESEX COUNTY)

FOR: ATHENS STREET, LLC, GOSHEN LANE, LLC
SCALE: 1"=60' DECEMBER 15, 2020
REVISED: MARCH 25, 2021
REVISED: APRIL 15, 2021

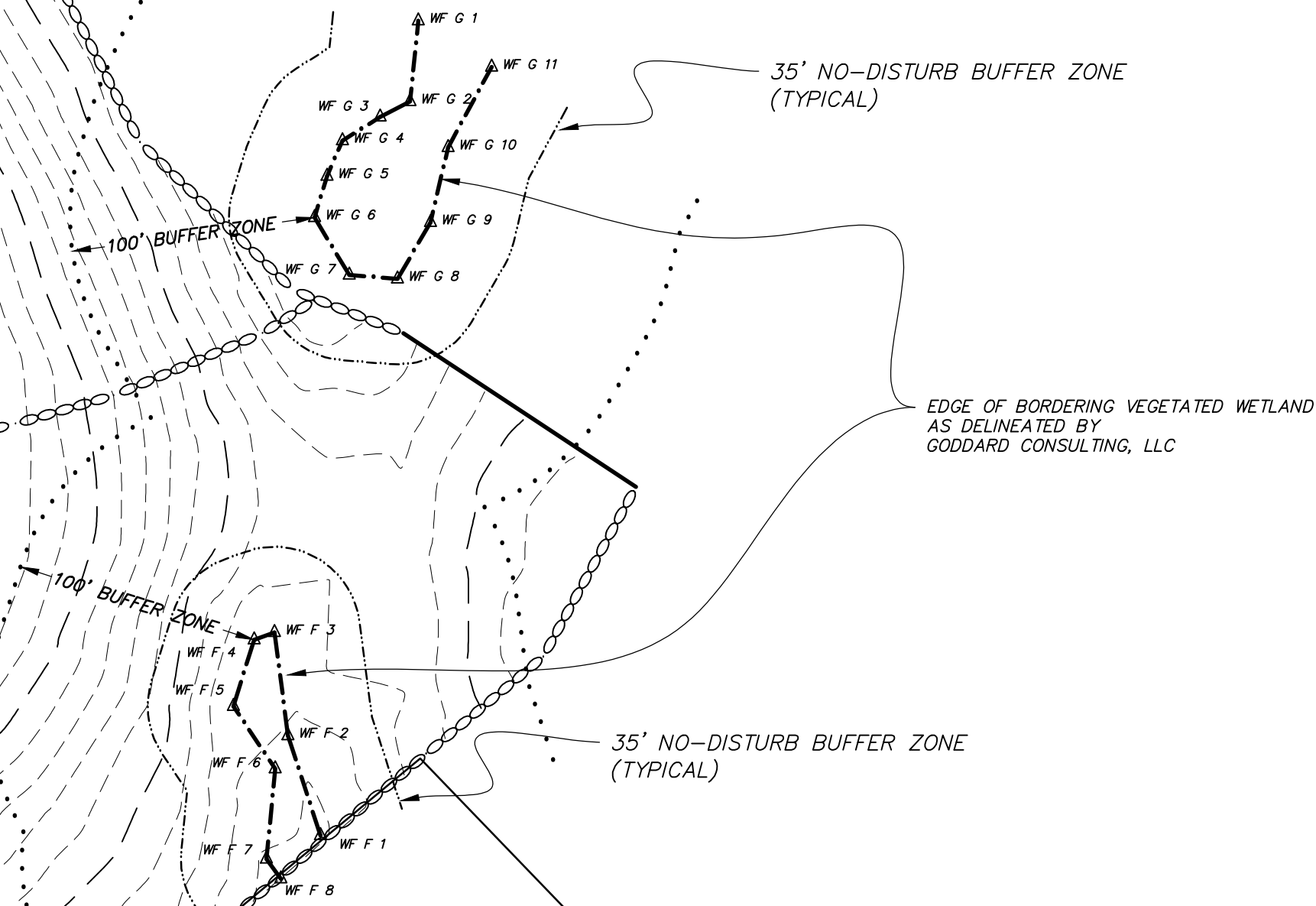
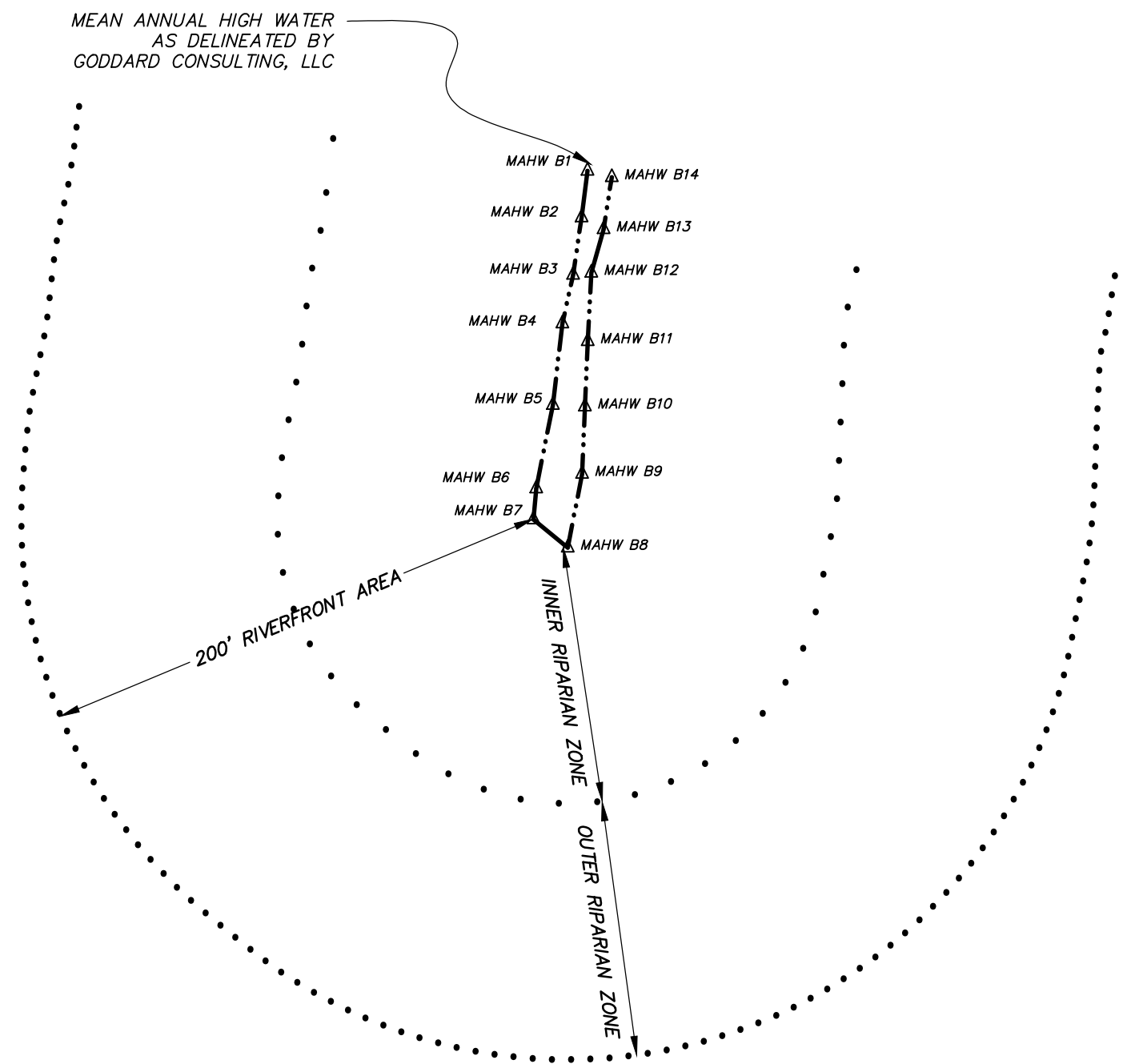
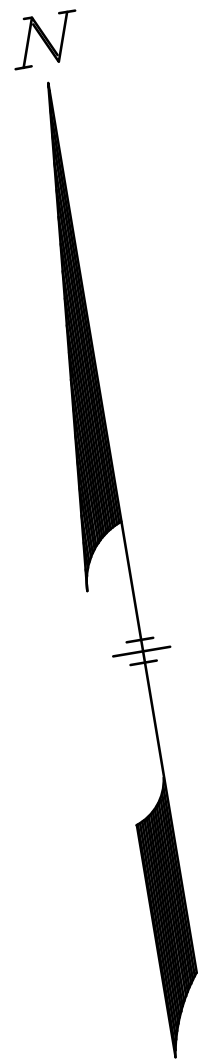
STAMSKI AND MCNARY, INC.
1000 MAIN STREET ACTON, MASSACHUSETTS
ENGINEERING - PLANNING - SURVEYING



0 30 60 120 180 240 FT

(3719C.ANRAD.dwg) Athens Street SM-3719C
(SHEET 1 OF 7)

UTILITY NOTE:
ALL UNDERGROUND UTILITIES SHOWN HERE WERE COMPILED ACCORDING TO AVAILABLE RECORD PLANS FROM VARIOUS UTILITY COMPANIES AND PUBLIC AGENCIES AND ARE APPROXIMATE ONLY. ACTUAL LOCATIONS MUST BE DETERMINED IN THE FIELD BEFORE DESIGNING, EXCAVATING, BLASTING, INSTALLING, BACKFILLING, GRADING, PAVEMENT RESTORATION OR REPAIRING. ALL UTILITY COMPANIES, PUBLIC AND PRIVATE, MUST BE CONTACTED INCLUDING THOSE IN CONTROL OF UTILITIES NOT SHOWN ON THIS PLAN. SEE CHAPTER 370, ACTS OF 1963 MASS. WE ASSUME NO RESPONSIBILITY FOR DAMAGES INCURRED AS A RESULT OF UTILITIES OMITTED OR INACCURATELY SHOWN. BEFORE PLANNING FUTURE CONNECTIONS THE APPROPRIATE PUBLIC UTILITY ENGINEERING DEPARTMENT MUST BE CONSULTED. DIG SAFE TELEPHONE No. 1-888-344-7233.



RESOURCE AREA
DELINEATION PLAN
IN
STOW, MASSACHUSETTS
(MIDDLESEX COUNTY)

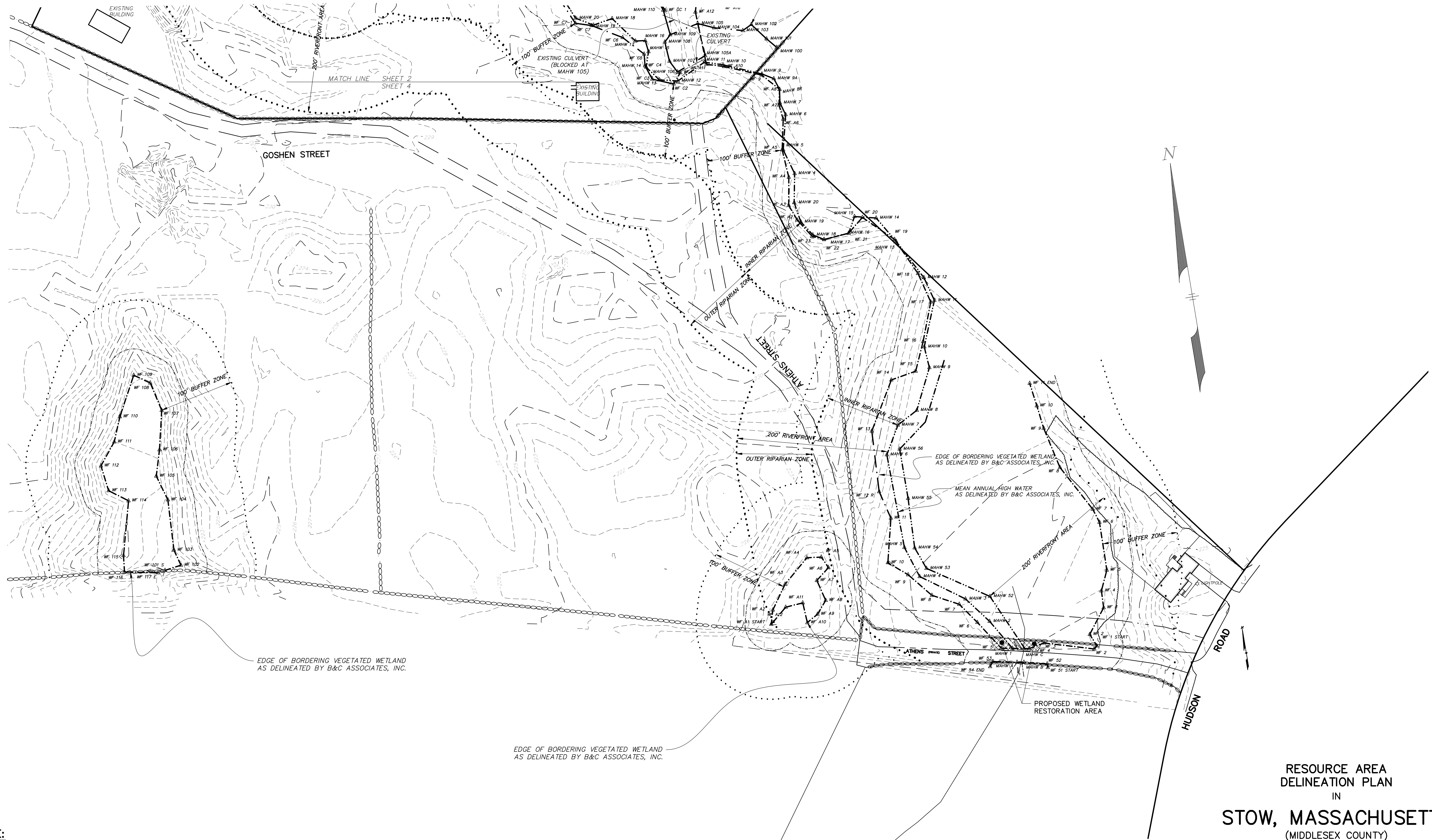
FOR: **ATHENS STREET, LLC, GOSHEN LANE, LLC**
SCALE: 1"=60' DECEMBER 15, 2020

REVISED: MARCH 25, 2021
REVISED: APRIL 15, 2021

STAMSKI AND MCNARY, INC.
1000 MAIN STREET ACTON, MASSACHUSETTS
ENGINEERING - PLANNING - SURVEYING



0 30 60 120 180 240 FT



UTILITY NOTE:

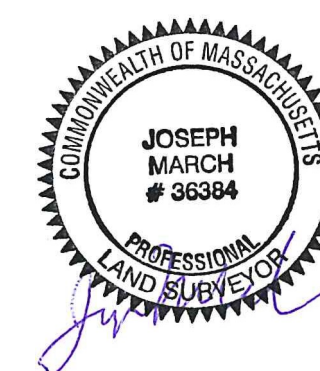
ALL UNDERGROUND UTILITIES SHOWN HERE WERE COMPILED ACCORDING TO AVAILABLE RECORD PLANS FROM VARIOUS UTILITY COMPANIES AND PUBLIC AGENCIES AND ARE APPROXIMATE ONLY. ACTUAL LOCATIONS MUST BE DETERMINED IN THE FIELD BEFORE DESIGNING, EXCAVATING, BLASTING, INSTALLING, BACKFILLING, GRADING, PAVEMENT RESTORATION OR REPAIRING. ALL UTILITY COMPANIES, PUBLIC AND PRIVATE, MUST BE CONTACTED INCLUDING THOSE IN CONTROL OF UTILITIES NOT SHOWN ON THIS PLAN. SEE CHAPTER 370, ACTS OF 1963 MASS. WE ASSUME NO RESPONSIBILITY FOR DAMAGES INCURRED AS A RESULT OF UTILITIES OMITTED OR INACCURATELY SHOWN. BEFORE PLANNING FUTURE CONNECTIONS THE APPROPRIATE PUBLIC UTILITY ENGINEERING DEPARTMENT MUST BE CONSULTED. DIG SAFE TELEPHONE No. 1-888-344-7233.

RESOURCE AREA
DELINEATION PLAN
IN
STOW, MASSACHUSETTS
(MIDDLESEX COUNTY)

FOR: **ATHENS STREET, LLC, GOSHEN LANE, LLC**
SCALE: 1"=60' DECEMBER 15, 2020

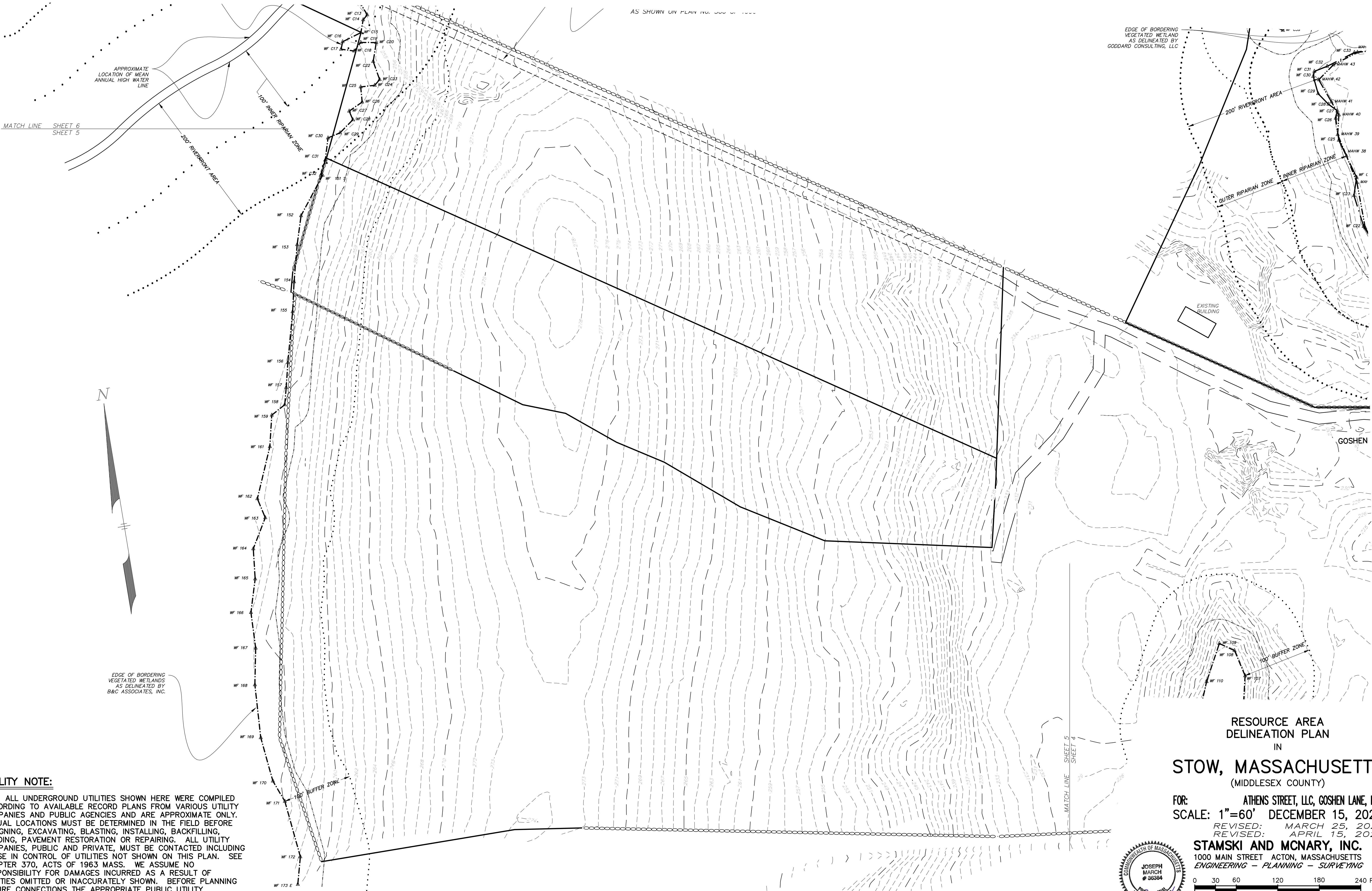
REVISED: MARCH 25, 2021
REVISED: APRIL 15, 2021

STAMSKI AND McNARY, INC.
1000 MAIN STREET ACTON, MASSACHUSETTS
ENGINEERING - PLANNING - SURVEYING



0 30 60 120 180 240 FT

(3719C.ANRAD.dwg) Athens Street SM-3719C
(SHEET 4 OF 7)



UTILITY NOTE:

ALL UNDERGROUND UTILITIES SHOWN HERE WERE COMPILED ACCORDING TO AVAILABLE RECORD PLANS FROM VARIOUS UTILITY COMPANIES AND PUBLIC AGENCIES AND ARE APPROXIMATE ONLY. ACTUAL LOCATIONS MUST BE DETERMINED IN THE FIELD BEFORE DESIGNING, EXCAVATING, BLASTING, INSTALLING, BACKFILLING, GRADING, PAVEMENT RESTORATION OR REPAIRING. ALL UTILITY COMPANIES, PUBLIC AND PRIVATE, MUST BE CONTACTED INCLUDING THOSE IN CONTROL OF UTILITIES NOT SHOWN ON THIS PLAN. SEE CHAPTER 370, ACTS OF 1963 MASS. WE ASSUME NO RESPONSIBILITY FOR DAMAGES INCURRED AS A RESULT OF UTILITIES OMITTED OR INACCURATELY SHOWN. BEFORE PLANNING FUTURE CONNECTIONS THE APPROPRIATE PUBLIC UTILITY ENGINEERING DEPARTMENT MUST BE CONSULTED. DIG SAFE TELEPHONE No. 1-888-344-7233.

**RESOURCE AREA
DELINEATION PLAN
IN
STOW, MASSACHUSETTS
(MIDDLESEX COUNTY)**

FOR: **ATHENS STREET, LLC, GOSHEN LANE, LLC**
SCALE: 1"=60' DECEMBER 15, 2020

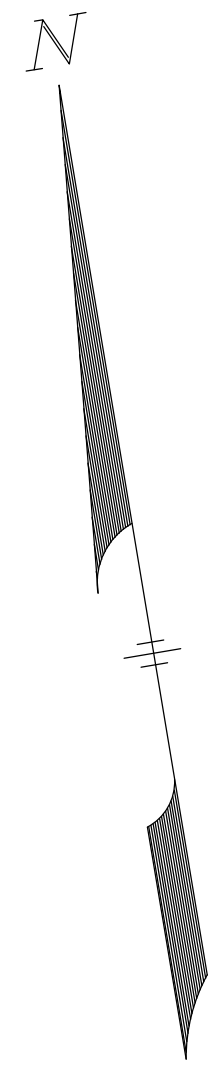
REVISED: MARCH 25, 2021
REVISED: APRIL 15, 2021

STAMSKI AND MCNARY, INC.
1000 MAIN STREET ACTON, MASSACHUSETTS
ENGINEERING - PLANNING - SURVEYING



0 30 60 120 180 240 FT

(3719C.ANRAD.dwg) Athens Street SM-3719C
(SHEET 5 OF 7)



MAPLE STREET
PUBLIC VARIABLE HIGHWAY

ISOLATED WETLAND
AS DELINEATED BY
GODDARD CONSULTING, LLC

EDGE OF BORDERING
VEGETATED WETLAND
AS DELINEATED BY
GODDARD CONSULTING, LLC

EDGE OF BORDERING
VEGETATED WETLAND
AS DELINEATED BY
GODDARD CONSULTING, LLC

APPROXIMATE LOCATION
GOSHEN LANE RIGHT OF WAY
AS SHOWN ON PLAN No. 306 OF 1996

MATCH LINE SHEET 6
SHEET 5

200' RIVERFRONT AREA
100' INNER RIPARIAN ZONE

UTILITY NOTE:

ALL UNDERGROUND UTILITIES SHOWN HERE WERE COMPILED ACCORDING TO AVAILABLE RECORD PLANS FROM VARIOUS UTILITY COMPANIES AND PUBLIC AGENCIES AND ARE APPROXIMATE ONLY. ACTUAL LOCATIONS MUST BE DETERMINED IN THE FIELD BEFORE DESIGNING, EXCAVATING, BLASTING, INSTALLING, BACKFILLING, GRADING, PAVEMENT RESTORATION OR REPAIRING. ALL UTILITY COMPANIES, PUBLIC AND PRIVATE, MUST BE CONTACTED INCLUDING THOSE IN CONTROL OF UTILITIES NOT SHOWN ON THIS PLAN. SEE CHAPTER 370, ACTS OF 1963 MASS. WE ASSUME NO RESPONSIBILITY FOR DAMAGES INCURRED AS A RESULT OF UTILITIES OMITTED OR INACCURATELY SHOWN. BEFORE PLANNING FUTURE CONNECTIONS THE APPROPRIATE PUBLIC UTILITY ENGINEERING DEPARTMENT MUST BE CONSULTED. DIG SAFE TELEPHONE No. 1-888-344-7233.

RESOURCE AREA
DELINEATION PLAN
IN

STOW, MASSACHUSETTS
(MIDDLESEX COUNTY)

FOR: ATHENS STREET, LLC, GOSHEN LANE, LLC
SCALE: 1"=60' DECEMBER 15, 2020

REVISED: MARCH 25, 2021
REVISED: APRIL 15, 2021

STAMSKI AND McNARY, INC.
1000 MAIN STREET ACTON, MASSACHUSETTS
ENGINEERING - PLANNING - SURVEYING

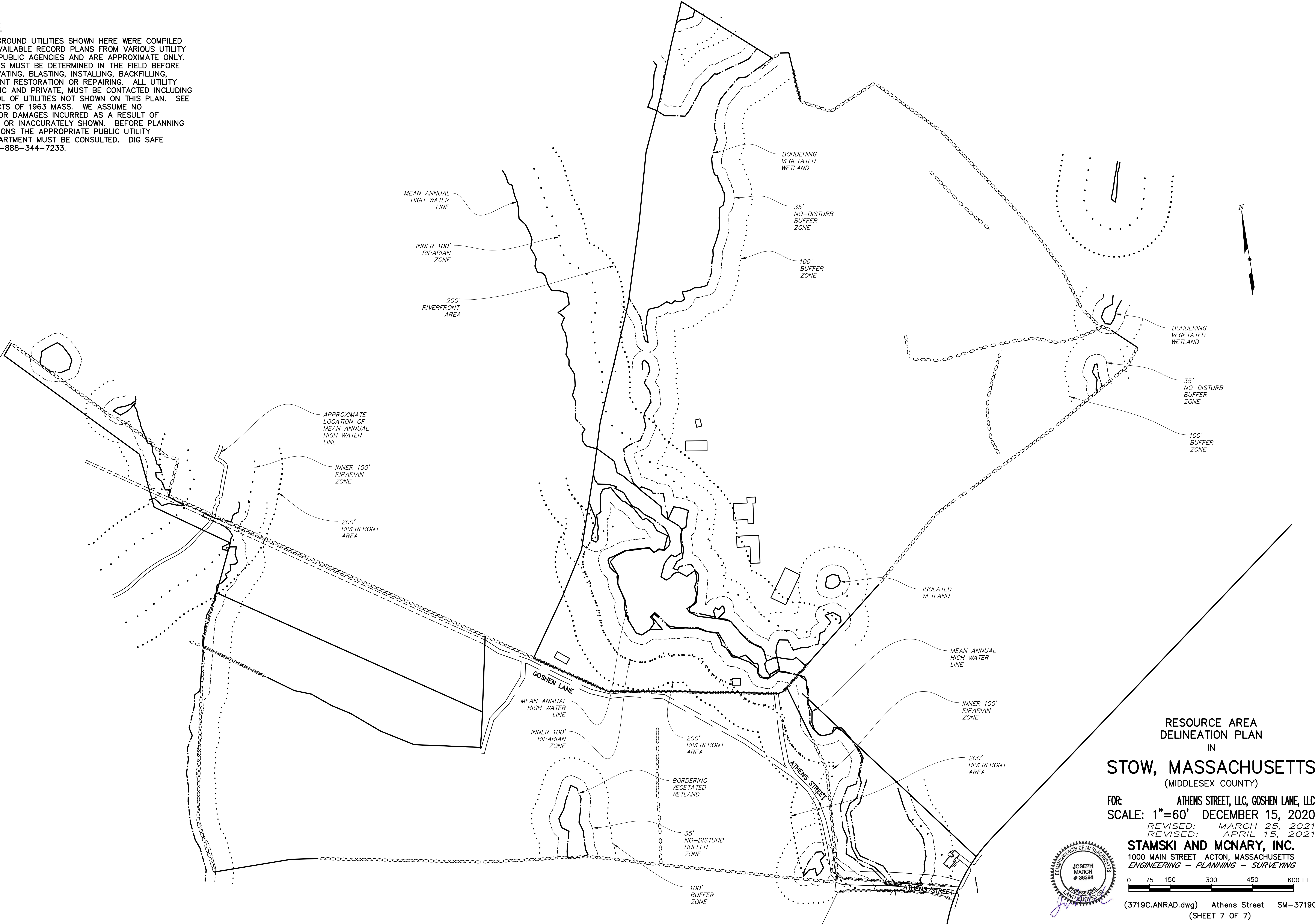
0 30 60 120 180 240 FT

(3719C.ANRAD.dwg) Athens Street SM-3719C
(SHEET 6 OF 7)



UTILITY NOTE:

ALL UNDERGROUND UTILITIES SHOWN HERE WERE COMPILED ACCORDING TO AVAILABLE RECORD PLANS FROM VARIOUS UTILITY COMPANIES AND PUBLIC AGENCIES AND ARE APPROXIMATE ONLY. ACTUAL LOCATIONS MUST BE DETERMINED IN THE FIELD BEFORE DESIGNING, EXCAVATING, BLASTING, INSTALLING, BACKFILLING, GRADING, PAVEMENT RESTORATION OR REPAIRING. ALL UTILITY COMPANIES, PUBLIC AND PRIVATE, MUST BE CONTACTED INCLUDING THOSE IN CONTROL OF UTILITIES NOT SHOWN ON THIS PLAN. SEE CHAPTER 370, ACTS OF 1963 MASS. WE ASSUME NO RESPONSIBILITY FOR DAMAGES INCURRED AS A RESULT OF UTILITIES OMITTED OR INACCURATELY SHOWN. BEFORE PLANNING FUTURE CONNECTIONS THE APPROPRIATE PUBLIC UTILITY ENGINEERING DEPARTMENT MUST BE CONSULTED. DIG SAFE TELEPHONE No. 1-888-344-7233.



RESOURCE AREA
DELINEATION PLAN
IN
STOW, MASSACHUSETTS
(MIDDLESEX COUNTY)

FOR: **ATHENS STREET, LLC, GOSHEN LANE, LLC**
SCALE: 1"=60' DECEMBER 15, 2020
REVISED: MARCH 25, 2021
REVISED: APRIL 15, 2021

STAMSKI AND MCNARY, INC.
1000 MAIN STREET ACTON, MASSACHUSETTS
ENGINEERING - PLANNING - SURVEYING



0 75 150 300 450 600 FT