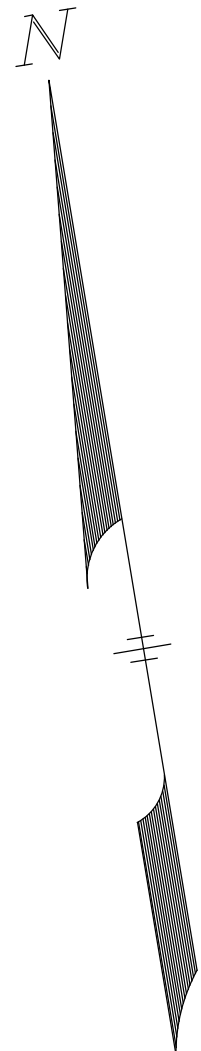
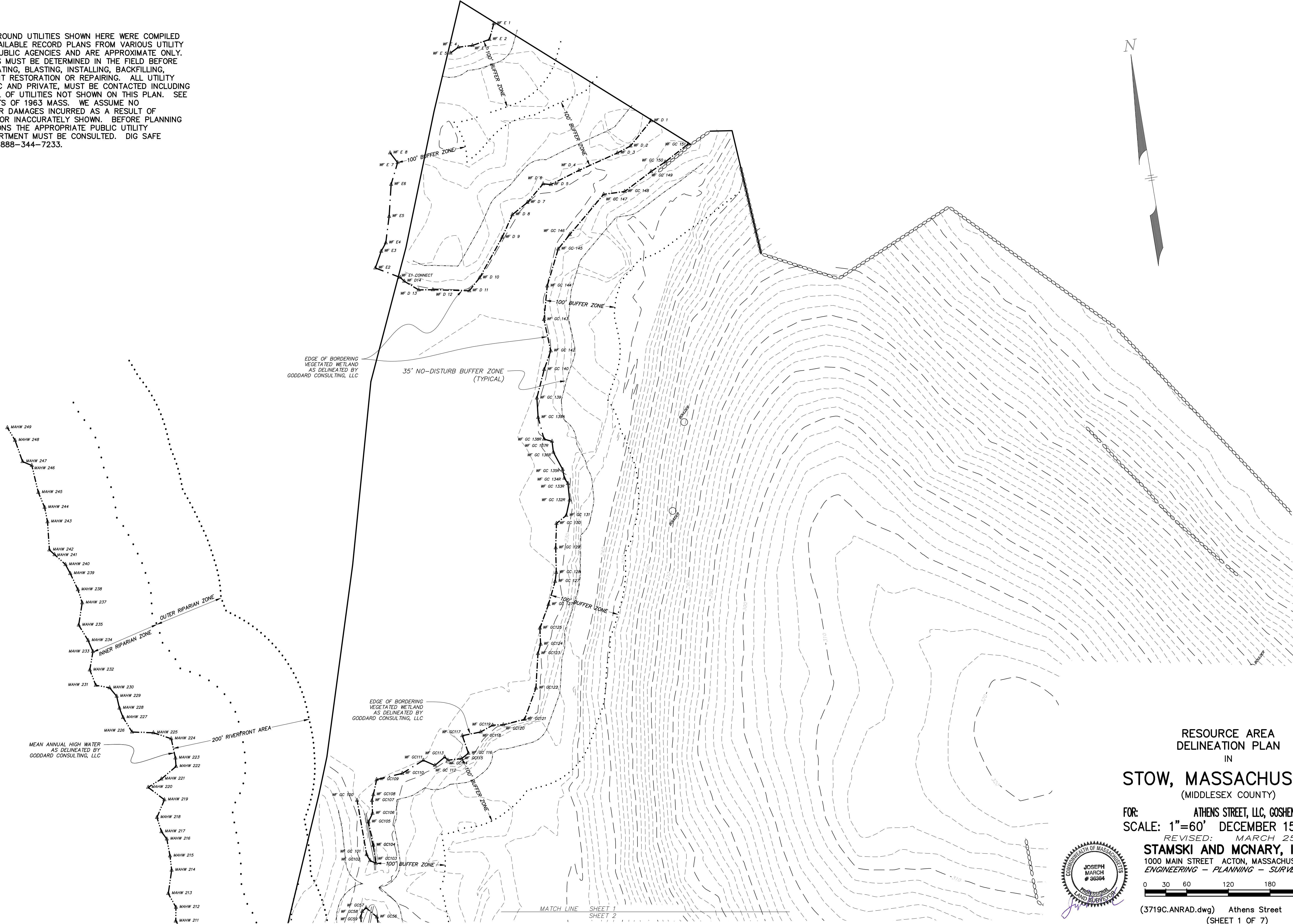


UTILITY NOTE:

ALL UNDERGROUND UTILITIES SHOWN HERE WERE COMPILED ACCORDING TO AVAILABLE RECORD PLANS FROM VARIOUS UTILITY COMPANIES AND PUBLIC AGENCIES AND ARE APPROXIMATE ONLY. ACTUAL LOCATIONS MUST BE DETERMINED IN THE FIELD BEFORE DESIGNING, EXCAVATING, BLASTING, INSTALLING, BACKFILLING, GRADING, PAVEMENT RESTORATION OR REPAIRING. ALL UTILITY COMPANIES, PUBLIC AND PRIVATE, MUST BE CONTACTED INCLUDING THOSE IN CONTROL OF UTILITIES NOT SHOWN ON THIS PLAN. SEE CHAPTER 370, ACTS OF 1963 MASS. WE ASSUME NO RESPONSIBILITY FOR DAMAGES INCURRED AS A RESULT OF UTILITIES OMITTED OR INACCURATELY SHOWN. BEFORE PLANNING FUTURE CONNECTIONS THE APPROPRIATE PUBLIC UTILITY ENGINEERING DEPARTMENT MUST BE CONSULTED. DIG SAFE TELEPHONE No. 1-888-344-7233.



RESOURCE AREA  
DELINEATION PLAN  
IN  
**STOW, MASSACHUSETTS**  
(MIDDLESEX COUNTY)

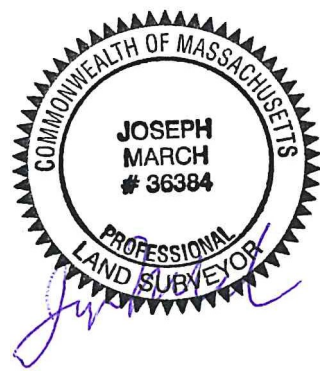
FOR: ATHENS STREET, LLC, GOSHEN LANE, LLC  
SCALE: 1"=60' DECEMBER 15, 2020

REVISED: MARCH 25, 2021

**STAMSKI AND MCNARY, INC.**  
1000 MAIN STREET ACTON, MASSACHUSETTS  
ENGINEERING - PLANNING - SURVEYING

0 30 60 120 180 240 FT

(3719C.ANRAD.dwg) Athens Street SM-3719C  
(SHEET 1 OF 7)





**UTILITY NOTE:**

ALL UNDERGROUND UTILITIES SHOWN HERE WERE COMPILED ACCORDING TO AVAILABLE RECORD PLANS FROM VARIOUS UTILITY COMPANIES AND PUBLIC AGENCIES AND ARE APPROXIMATE ONLY. ACTUAL LOCATIONS MUST BE DETERMINED IN THE FIELD BEFORE DESIGNING, EXCAVATING, BLASTING, INSTALLING, BACKFILLING, GRADING, PAVEMENT RESTORATION OR REPAIRING. ALL UTILITY COMPANIES, PUBLIC AND PRIVATE, MUST BE CONTACTED INCLUDING THOSE IN CONTROL OF UTILITIES NOT SHOWN ON THIS PLAN. SEE CHAPTER 370, ACTS OF 1963 MASS. WE ASSUME NO RESPONSIBILITY FOR DAMAGES INCURRED AS A RESULT OF UTILITIES OMITTED OR INACCURATELY SHOWN. BEFORE PLANNING FUTURE CONNECTIONS THE APPROPRIATE PUBLIC UTILITY ENGINEERING DEPARTMENT MUST BE CONSULTED. DIG SAFE TELEPHONE No. 1-888-344-7233.

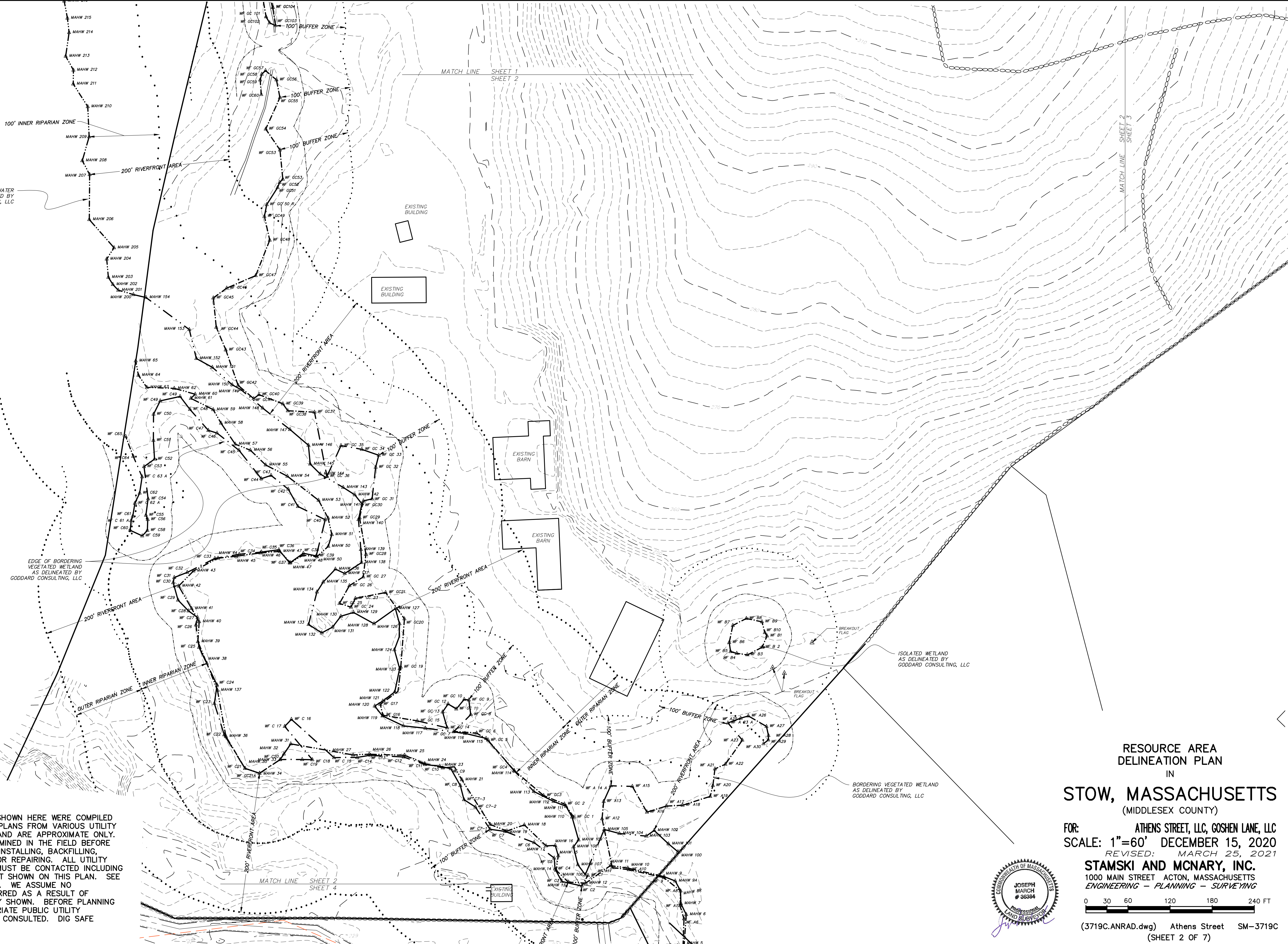
RESOURCE AREA  
DELINEATION PLAN  
IN  
**STOW, MASSACHUSETTS**  
(MIDDLESEX COUNTY)

FOR: ATHENS STREET, LLC, GOSHEN LANE, LLC  
SCALE: 1"=60' DECEMBER 15, 2020  
REVISED: MARCH 25, 2021

**STAMSKI AND MCNARY, INC.**  
1000 MAIN STREET ACTON, MASSACHUSETTS  
ENGINEERING - PLANNING - SURVEYING

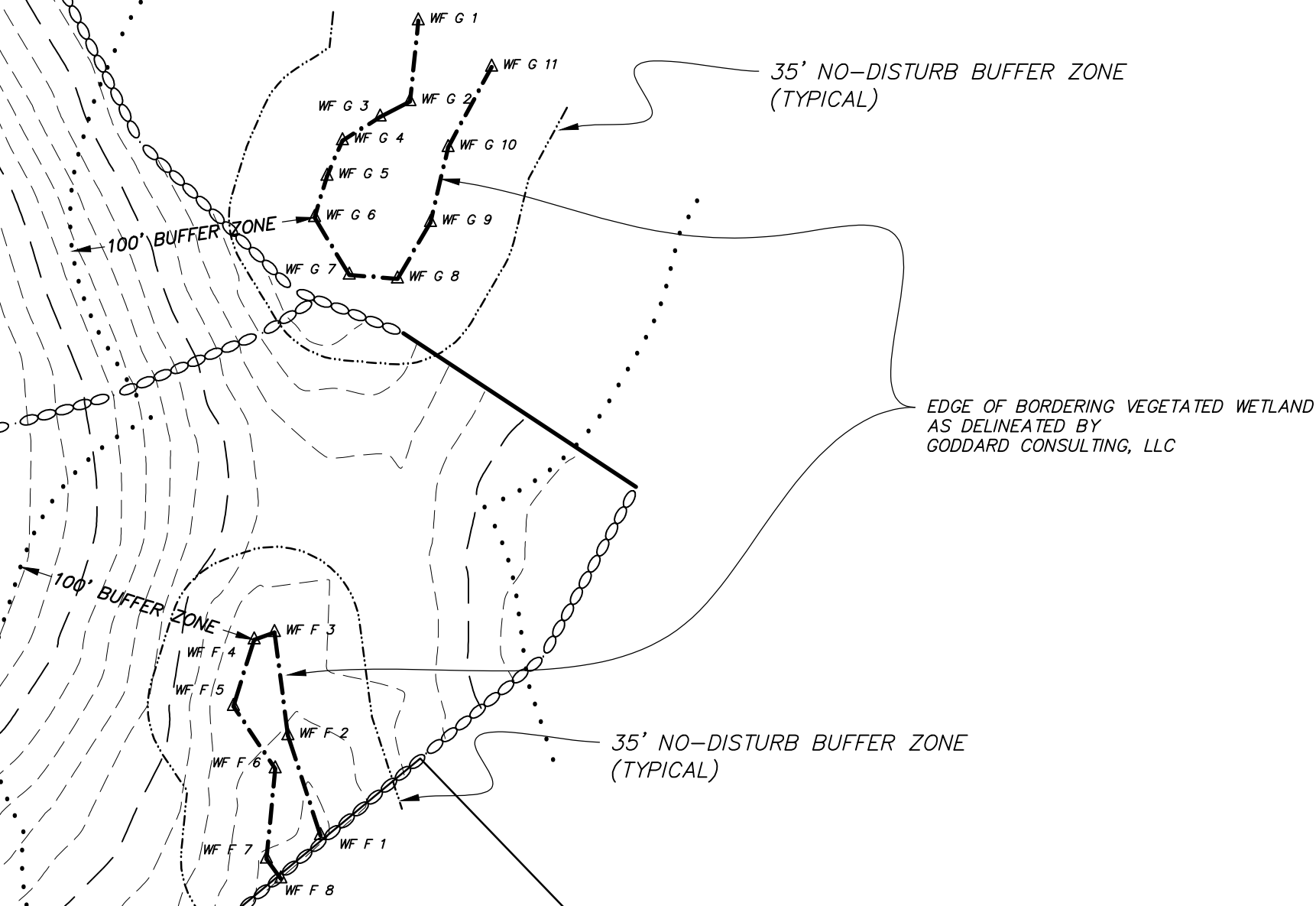
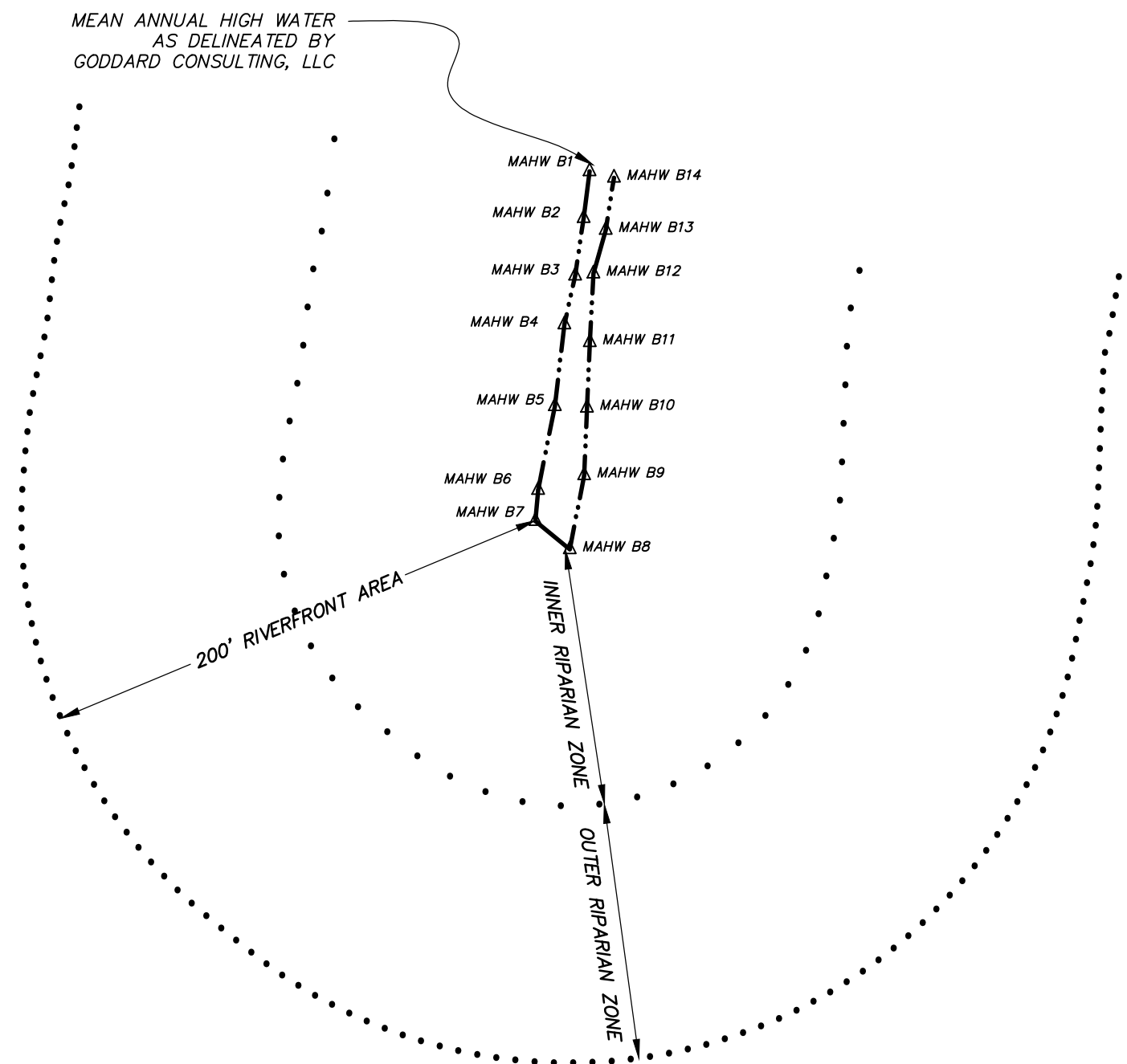
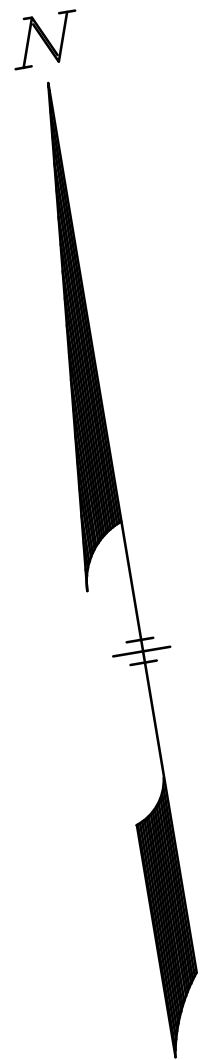
0 30 60 120 180 240 FT

(3719C.ANRAD.dwg) Athens Street SM-3719C  
(SHEET 2 OF 7)





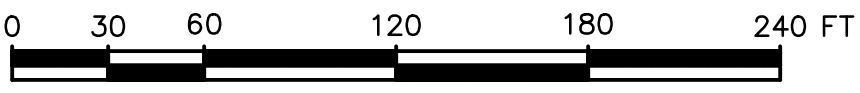
**UTILITY NOTE:**  
ALL UNDERGROUND UTILITIES SHOWN HERE WERE COMPILED ACCORDING TO AVAILABLE RECORD PLANS FROM VARIOUS UTILITY COMPANIES AND PUBLIC AGENCIES AND ARE APPROXIMATE ONLY. ACTUAL LOCATIONS MUST BE DETERMINED IN THE FIELD BEFORE DESIGNING, EXCAVATING, BLASTING, INSTALLING, BACKFILLING, GRADING, PAVEMENT RESTORATION OR REPAIRING. ALL UTILITY COMPANIES, PUBLIC AND PRIVATE, MUST BE CONTACTED INCLUDING THOSE IN CONTROL OF UTILITIES NOT SHOWN ON THIS PLAN. SEE CHAPTER 370, ACTS OF 1963 MASS. WE ASSUME NO RESPONSIBILITY FOR DAMAGES INCURRED AS A RESULT OF UTILITIES OMITTED OR INACCURATELY SHOWN. BEFORE PLANNING FUTURE CONNECTIONS THE APPROPRIATE PUBLIC UTILITY ENGINEERING DEPARTMENT MUST BE CONSULTED. DIG SAFE TELEPHONE No. 1-888-344-7233.



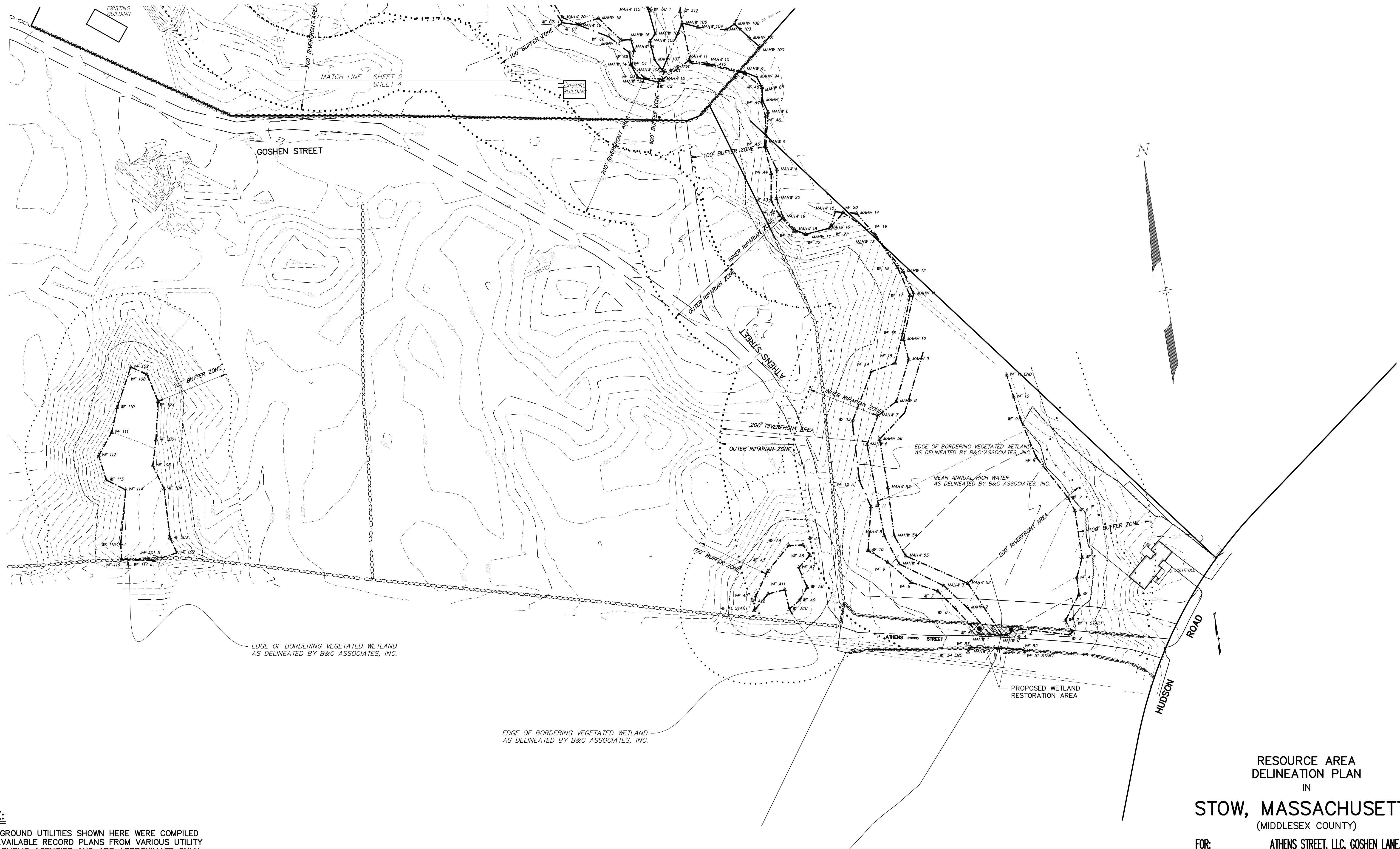
RESOURCE AREA  
DELINEATION PLAN  
IN  
**STOW, MASSACHUSETTS**  
(MIDDLESEX COUNTY)

FOR: **ATHENS STREET, LLC, GOSHEN LANE, LLC**  
SCALE: 1"=60' DECEMBER 15, 2020  
REVISED: MARCH 25, 2021

**STAMSKI AND MCNARY, INC.**  
1000 MAIN STREET ACTON, MASSACHUSETTS  
ENGINEERING - PLANNING - SURVEYING







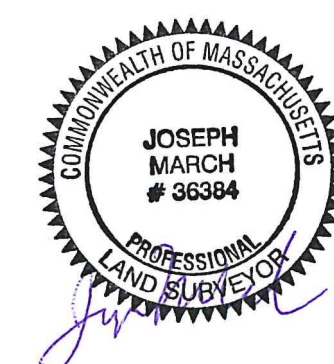
**UTILITY NOTE:**

ALL UNDERGROUND UTILITIES SHOWN HERE WERE COMPILED ACCORDING TO AVAILABLE RECORD PLANS FROM VARIOUS UTILITY COMPANIES AND PUBLIC AGENCIES AND ARE APPROXIMATE ONLY. ACTUAL LOCATIONS MUST BE DETERMINED IN THE FIELD BEFORE DESIGNING, EXCAVATING, BLASTING, INSTALLING, BACKFILLING, GRADING, PAVEMENT RESTORATION OR REPAIRING. ALL UTILITY COMPANIES, PUBLIC AND PRIVATE, MUST BE CONTACTED INCLUDING THOSE IN CONTROL OF UTILITIES NOT SHOWN ON THIS PLAN. SEE CHAPTER 370, ACTS OF 1963 MASS. WE ASSUME NO RESPONSIBILITY FOR DAMAGES INCURRED AS A RESULT OF UTILITIES OMITTED OR INACCURATELY SHOWN. BEFORE PLANNING FUTURE CONNECTIONS THE APPROPRIATE PUBLIC UTILITY ENGINEERING DEPARTMENT MUST BE CONSULTED. DIG SAFE TELEPHONE No. 1-888-344-7233.

RESOURCE AREA  
DELINEATION PLAN  
IN  
**STOW, MASSACHUSETTS**  
(MIDDLESEX COUNTY)

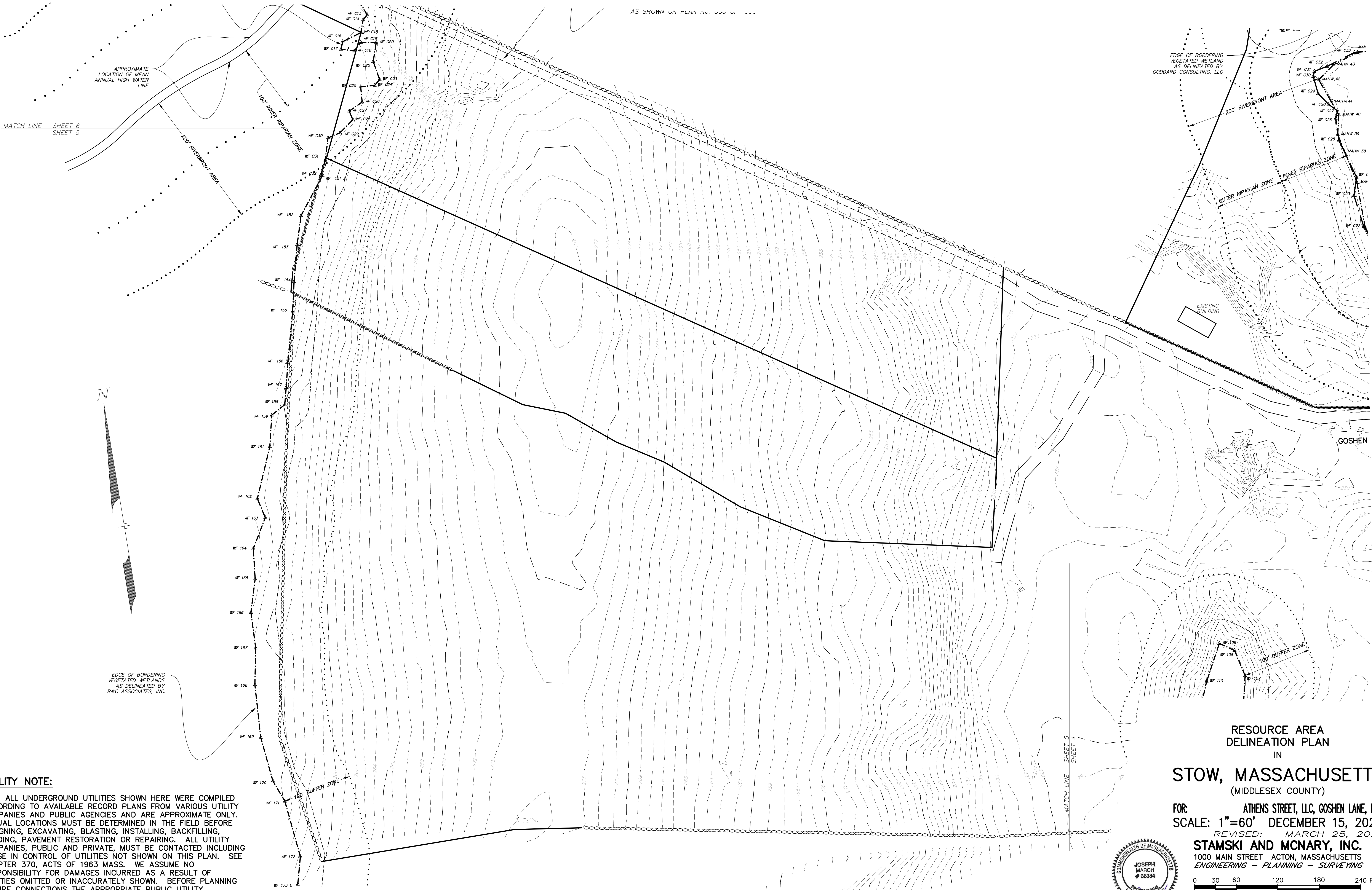
FOR: **ATHENS STREET, LLC, GOSHEN LANE, LLC**  
SCALE: 1"=60' DECEMBER 15, 2020  
REVISED: MARCH 25, 2021

**STAMSKI AND McNARY, INC.**  
1000 MAIN STREET ACTON, MASSACHUSETTS  
ENGINEERING - PLANNING - SURVEYING



0 30 60 120 180 240 FT





**UTILITY NOTE:**

ALL UNDERGROUND UTILITIES SHOWN HERE WERE COMPILED ACCORDING TO AVAILABLE RECORD PLANS FROM VARIOUS UTILITY COMPANIES AND PUBLIC AGENCIES AND ARE APPROXIMATE ONLY. ACTUAL LOCATIONS MUST BE DETERMINED IN THE FIELD BEFORE DESIGNING, EXCAVATING, BLASTING, INSTALLING, BACKFILLING, GRADING, PAVEMENT RESTORATION OR REPAIRING. ALL UTILITY COMPANIES, PUBLIC AND PRIVATE, MUST BE CONTACTED INCLUDING THOSE IN CONTROL OF UTILITIES NOT SHOWN ON THIS PLAN. SEE CHAPTER 370, ACTS OF 1963 MASS. WE ASSUME NO RESPONSIBILITY FOR DAMAGES INCURRED AS A RESULT OF UTILITIES OMITTED OR INACCURATELY SHOWN. BEFORE PLANNING FUTURE CONNECTIONS THE APPROPRIATE PUBLIC UTILITY ENGINEERING DEPARTMENT MUST BE CONSULTED. DIG SAFE TELEPHONE No. 1-888-344-7233.



**RESOURCE AREA  
DELINEATION PLAN  
IN  
STOW, MASSACHUSETTS  
(MIDDLESEX COUNTY)**

FOR: **ATHENS STREET, LLC, GOSHEN LANE, LLC**  
SCALE: 1"=60' DECEMBER 15, 2020

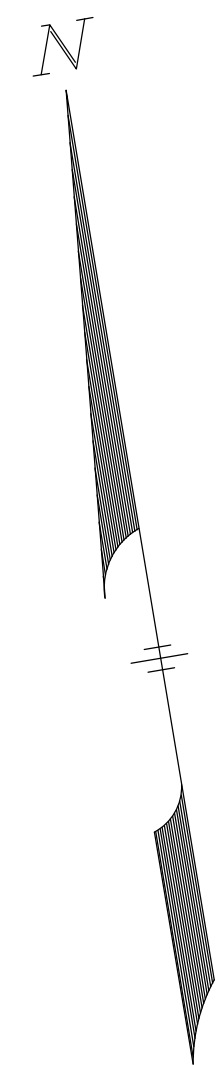
REVISED: MARCH 25, 2021

**STAMSKI AND MCNARY, INC.**  
1000 MAIN STREET ACTON, MASSACHUSETTS  
ENGINEERING - PLANNING - SURVEYING

0 30 60 120 180 240 FT

(3719C.AN.RAD.dwg) Athens Street SM-3719C  
(SHEET 5 OF 7)





MAPLE STREET  
VARIABLE WIDTH

ISOLATED WETLAND  
AS DELINEATED BY  
GODDARD CONSULTING, LLC

EDGE OF BORDERING  
VEGETATED WETLAND  
AS DELINEATED BY  
GODDARD CONSULTING, LLC

EDGE OF BORDERING  
VEGETATED WETLAND  
AS DELINEATED BY  
GODDARD CONSULTING, LLC

APPROXIMATE LOCATION  
GOSHEN LANE RIGHT OF WAY  
AS SHOWN ON PLAN No. 306 OF 1996

MATCH LINE SHEET 6  
SHEET 5

100' INNER RIPARIAN ZONE

200' RIVERFRONT AREA

#### UTILITY NOTE:

ALL UNDERGROUND UTILITIES SHOWN HERE WERE COMPILED ACCORDING TO AVAILABLE RECORD PLANS FROM VARIOUS UTILITY COMPANIES AND PUBLIC AGENCIES AND ARE APPROXIMATE ONLY. ACTUAL LOCATIONS MUST BE DETERMINED IN THE FIELD BEFORE DESIGNING, EXCAVATING, BLASTING, INSTALLING, BACKFILLING, GRADING, PAVEMENT RESTORATION OR REPAIRING. ALL UTILITY COMPANIES, PUBLIC AND PRIVATE, MUST BE CONTACTED INCLUDING THOSE IN CONTROL OF UTILITIES NOT SHOWN ON THIS PLAN. SEE CHAPTER 370, ACTS OF 1963 MASS. WE ASSUME NO RESPONSIBILITY FOR DAMAGES INCURRED AS A RESULT OF UTILITIES OMITTED OR INACCURATELY SHOWN. BEFORE PLANNING FUTURE CONNECTIONS THE APPROPRIATE PUBLIC UTILITY ENGINEERING DEPARTMENT MUST BE CONSULTED. DIG SAFE TELEPHONE No. 1-888-344-7233.

#### RESOURCE AREA DELINEATION PLAN IN

### STOW, MASSACHUSETTS (MIDDLESEX COUNTY)

FOR: ATHENS STREET, LLC, GOSHEN LANE, LLC  
SCALE: 1"=60' DECEMBER 15, 2020

REVISED: MARCH 25, 2021

**STAMSKI AND McNARY, INC.**  
1000 MAIN STREET ACTON, MASSACHUSETTS  
ENGINEERING - PLANNING - SURVEYING



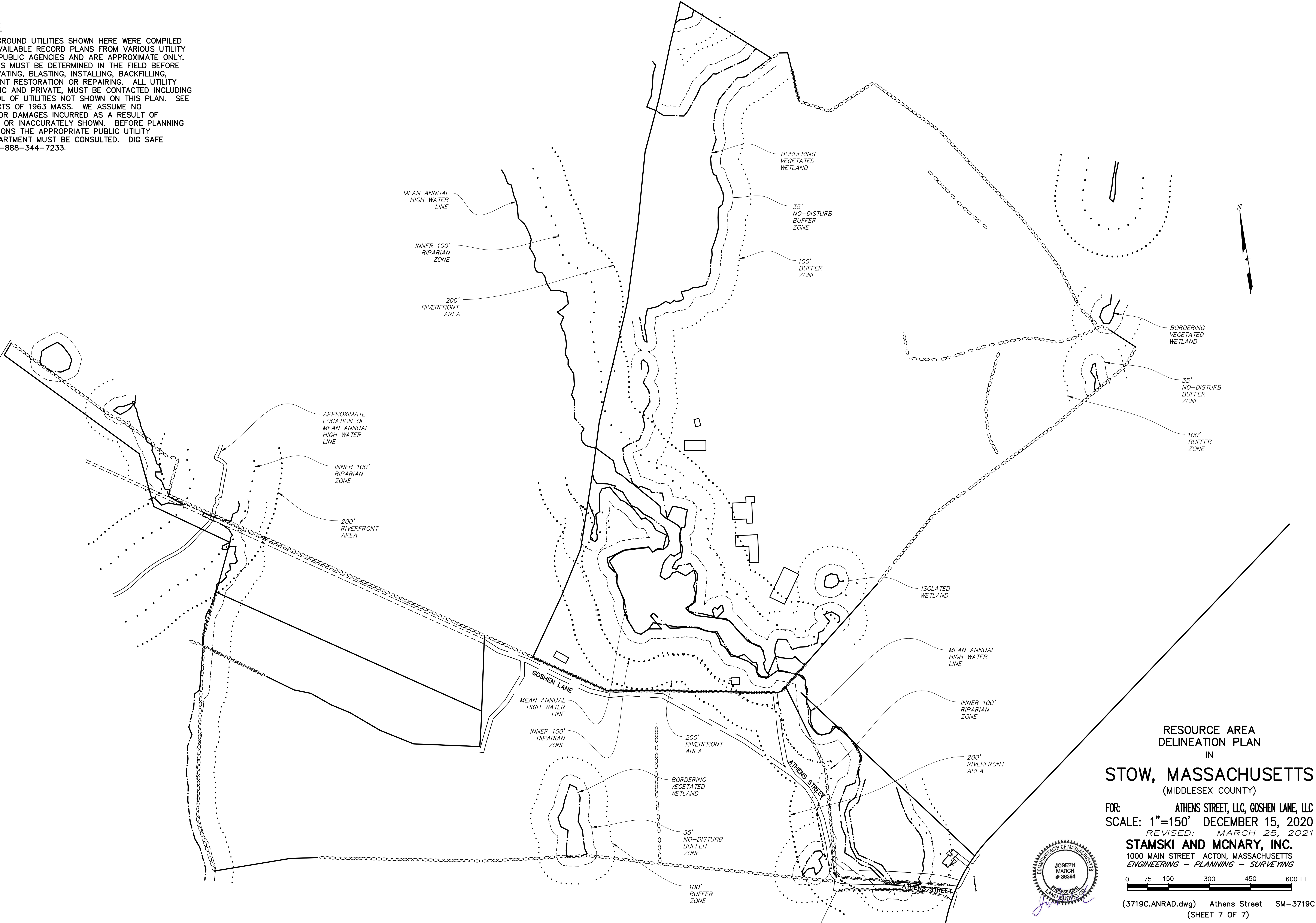
0 30 60 120 180 240 FT

(3719C.ANRAD.dwg) Athens Street SM-3719C  
(SHEET 6 OF 7)



UTILITY NOTE:

ALL UNDERGROUND UTILITIES SHOWN HERE WERE COMPILED ACCORDING TO AVAILABLE RECORD PLANS FROM VARIOUS UTILITY COMPANIES AND PUBLIC AGENCIES AND ARE APPROXIMATE ONLY. ACTUAL LOCATIONS MUST BE DETERMINED IN THE FIELD BEFORE DESIGNING, EXCAVATING, BLASTING, INSTALLING, BACKFILLING, GRADING, PAVEMENT RESTORATION OR REPAIRING. ALL UTILITY COMPANIES, PUBLIC AND PRIVATE, MUST BE CONTACTED INCLUDING THOSE IN CONTROL OF UTILITIES NOT SHOWN ON THIS PLAN. SEE CHAPTER 370, ACTS OF 1963 MASS. WE ASSUME NO RESPONSIBILITY FOR DAMAGES INCURRED AS A RESULT OF UTILITIES OMITTED OR INACCURATELY SHOWN. BEFORE PLANNING FUTURE CONNECTIONS THE APPROPRIATE PUBLIC UTILITY ENGINEERING DEPARTMENT MUST BE CONSULTED. DIG SAFE TELEPHONE No. 1-888-344-7233.



RESOURCE AREA  
DELINEATION PLAN  
IN  
**STOW, MASSACHUSETTS**  
(MIDDLESEX COUNTY)

FOR: **ATHENS STREET, LLC, GOSHEN LANE, LLC**  
SCALE: 1"=150' **DECEMBER 15, 2020**  
REVISED: **MARCH 25, 2021**  
**STAMSKI AND MCNARY, INC.**  
1000 MAIN STREET ACTON, MASSACHUSETTS  
ENGINEERING - PLANNING - SURVEYING

