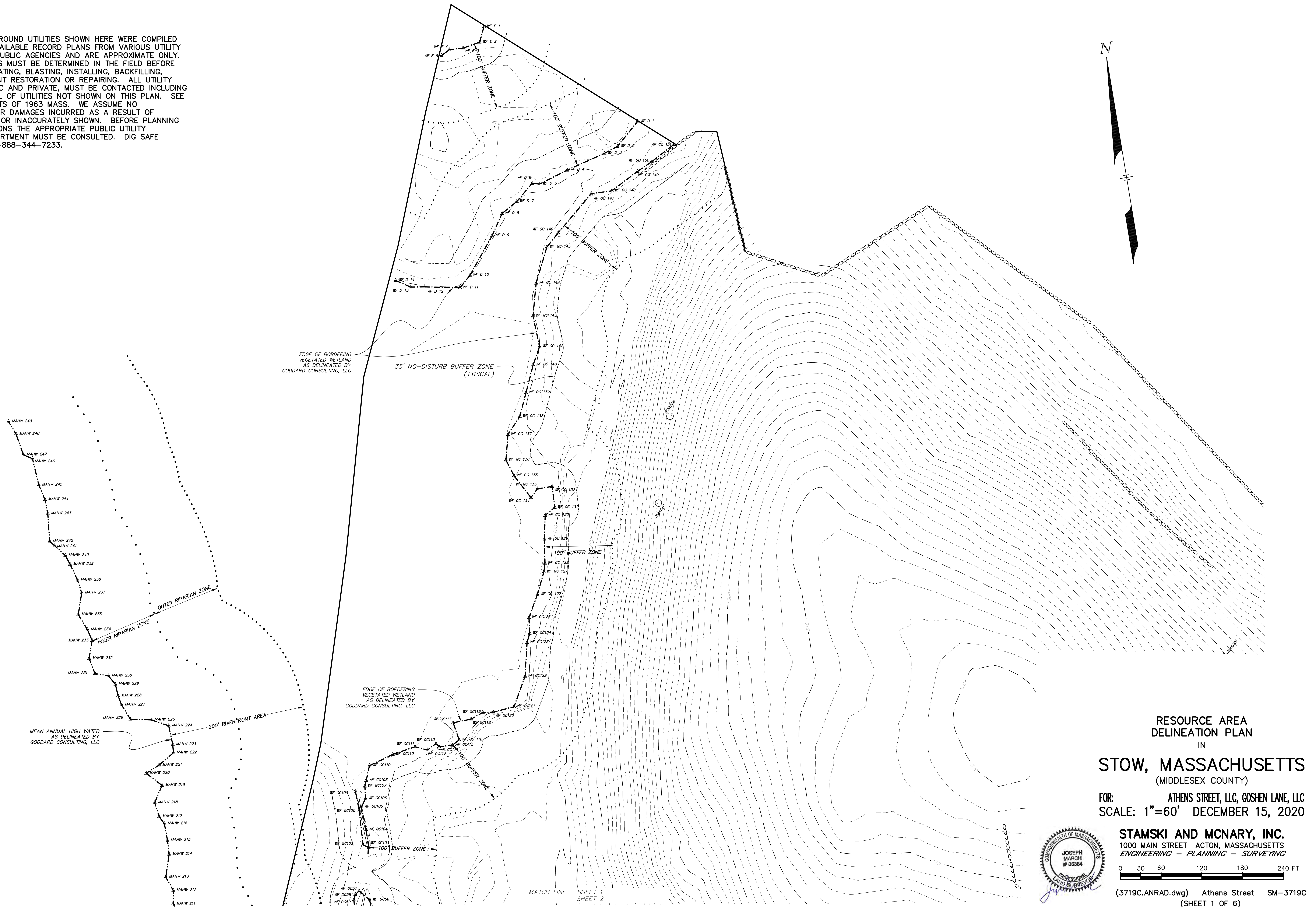


ALL UNDERGROUND UTILITIES SHOWN HERE WERE COMPILED  
ACCORDING TO AVAILABLE RECORD PLANS FROM VARIOUS UTILITY  
COMPANIES AND PUBLIC AGENCIES AND ARE APPROXIMATE ONLY.  
ACTUAL LOCATIONS MUST BE DETERMINED IN THE FIELD BEFORE  
DESIGNING, EXCAVATING, BLASTING, INSTALLING, BACKFILLING,  
GRADING, PAVEMENT RESTORATION OR REPAIRING. ALL UTILITY  
COMPANIES, PUBLIC AND PRIVATE, MUST BE CONTACTED INCLUDING  
THOSE IN CONTROL OF UTILITIES NOT SHOWN ON THIS PLAN. SEE  
CHAPTER 370, ACTS OF 1963 MASS. WE ASSUME NO  
RESPONSIBILITY FOR DAMAGES INCURRED AS A RESULT OF  
UTILITIES OMITTED OR INACCURATELY SHOWN. BEFORE PLANNING  
FUTURE CONNECTIONS THE APPROPRIATE PUBLIC UTILITY  
ENGINEERING DEPARTMENT MUST BE CONSULTED. DIG SAFE  
TELEPHONE No. 1-888-344-7233.





**UTILITY NOTE:**

ALL UNDERGROUND UTILITIES SHOWN HERE WERE COMPILED ACCORDING TO AVAILABLE RECORD PLANS FROM VARIOUS UTILITY COMPANIES AND PUBLIC AGENCIES AND ARE APPROXIMATE ONLY. ACTUAL LOCATIONS MUST BE DETERMINED IN THE FIELD BEFORE DESIGNING, EXCAVATING, BLASTING, INSTALLING, BACKFILLING, GRADING, PAVEMENT RESTORATION OR REPAIRING. ALL UTILITY COMPANIES, PUBLIC AND PRIVATE, MUST BE CONTACTED INCLUDING THOSE IN CONTROL OF UTILITIES NOT SHOWN ON THIS PLAN. SEE CHAPTER 370, ACTS OF 1963 MASS. WE ASSUME NO RESPONSIBILITY FOR DAMAGES INCURRED AS A RESULT OF UTILITIES OMITTED OR INACCURATELY SHOWN. BEFORE PLANNING FUTURE CONNECTIONS THE APPROPRIATE PUBLIC UTILITY ENGINEERING DEPARTMENT MUST BE CONSULTED. DIG SAFE TELEPHONE No. 1-888-344-7233.

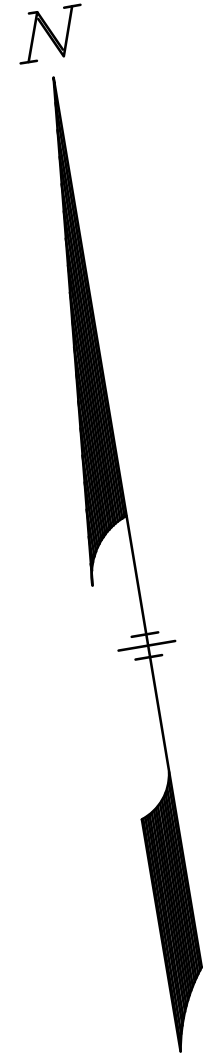
RESOURCE AREA  
DELINEATION PLAN  
IN  
**STOW, MASSACHUSETTS**  
(MIDDLESEX COUNTY)

FOR: **ATHENS STREET, LLC, GOSHEN LANE, LLC**  
SCALE: 1"=60' DECEMBER 15, 2020

**STAMSKI AND MCNARY, INC.**  
1000 MAIN STREET ACTON, MASSACHUSETTS  
ENGINEERING - PLANNING - SURVEYING

0 30 60 120 180 240 FT

(3719C.ANRAD.dwg) Athens Street SM-3719C  
(SHEET 2 OF 6)

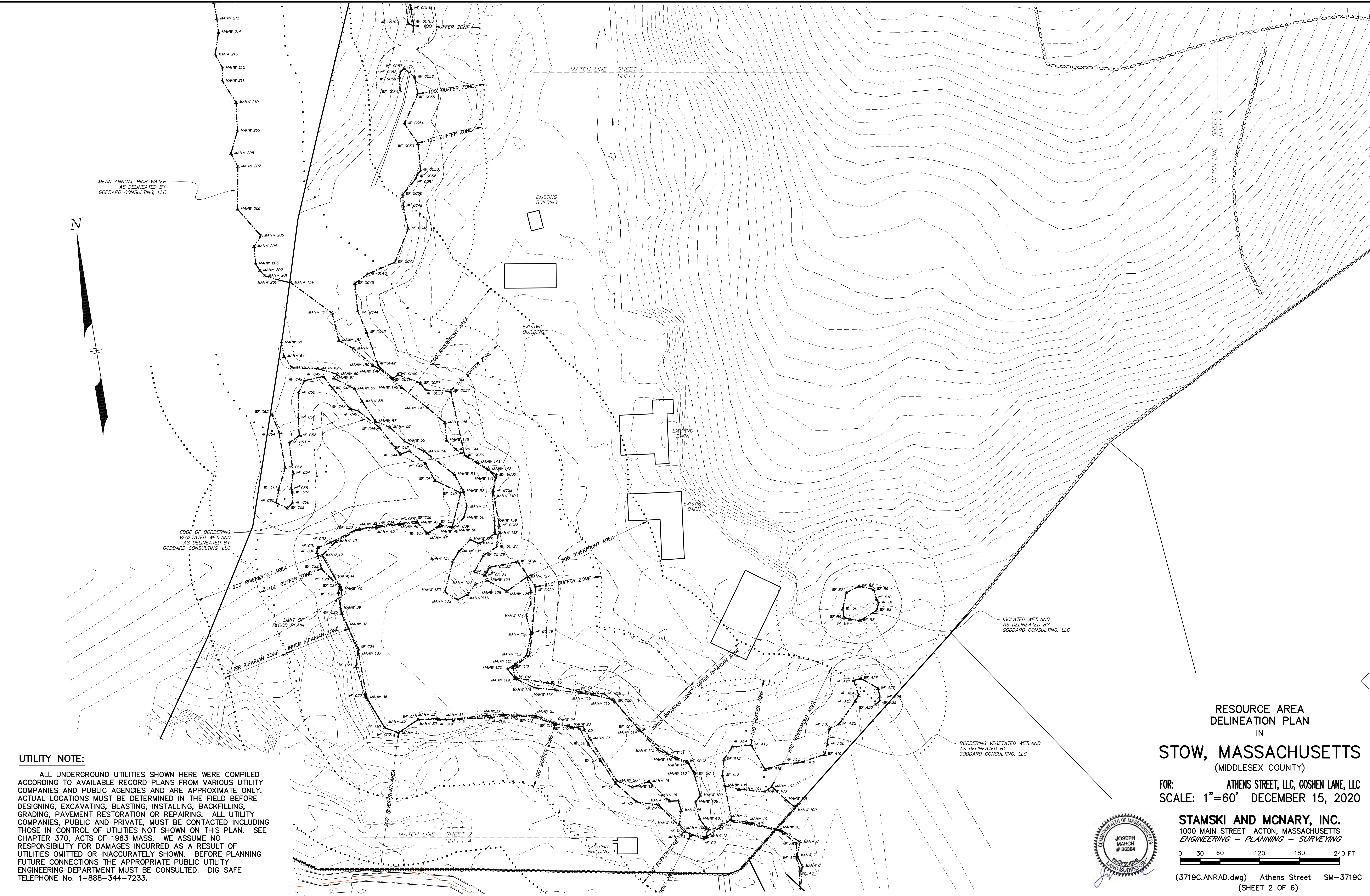


MEAN ANNUAL HIGH WATER  
AS DELINEATED BY  
GODDARD CONSULTING, LLC

EDGE OF BORDERING  
VEGETATED WETLAND  
AS DELINEATED BY  
GODDARD CONSULTING, LLC

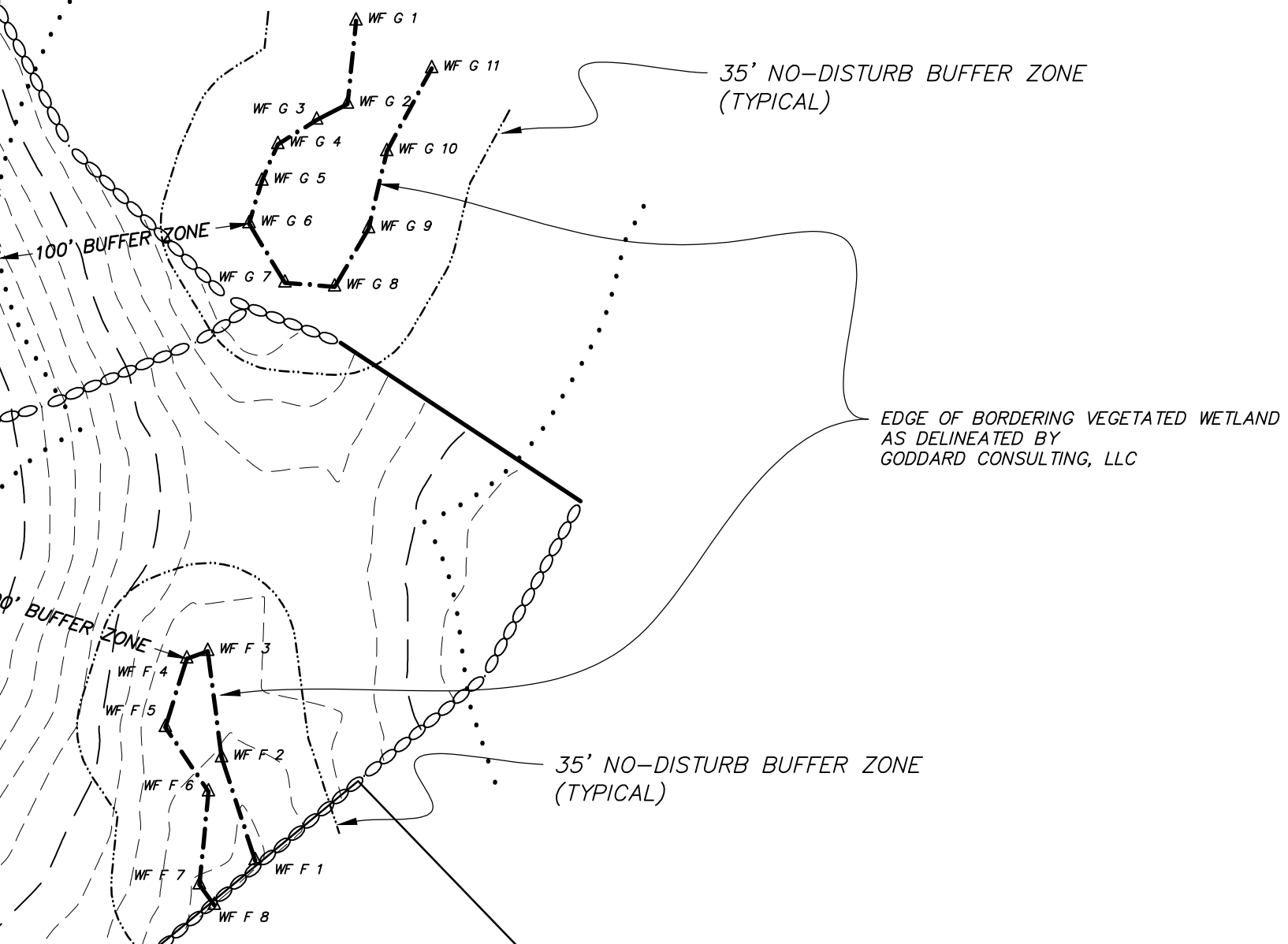
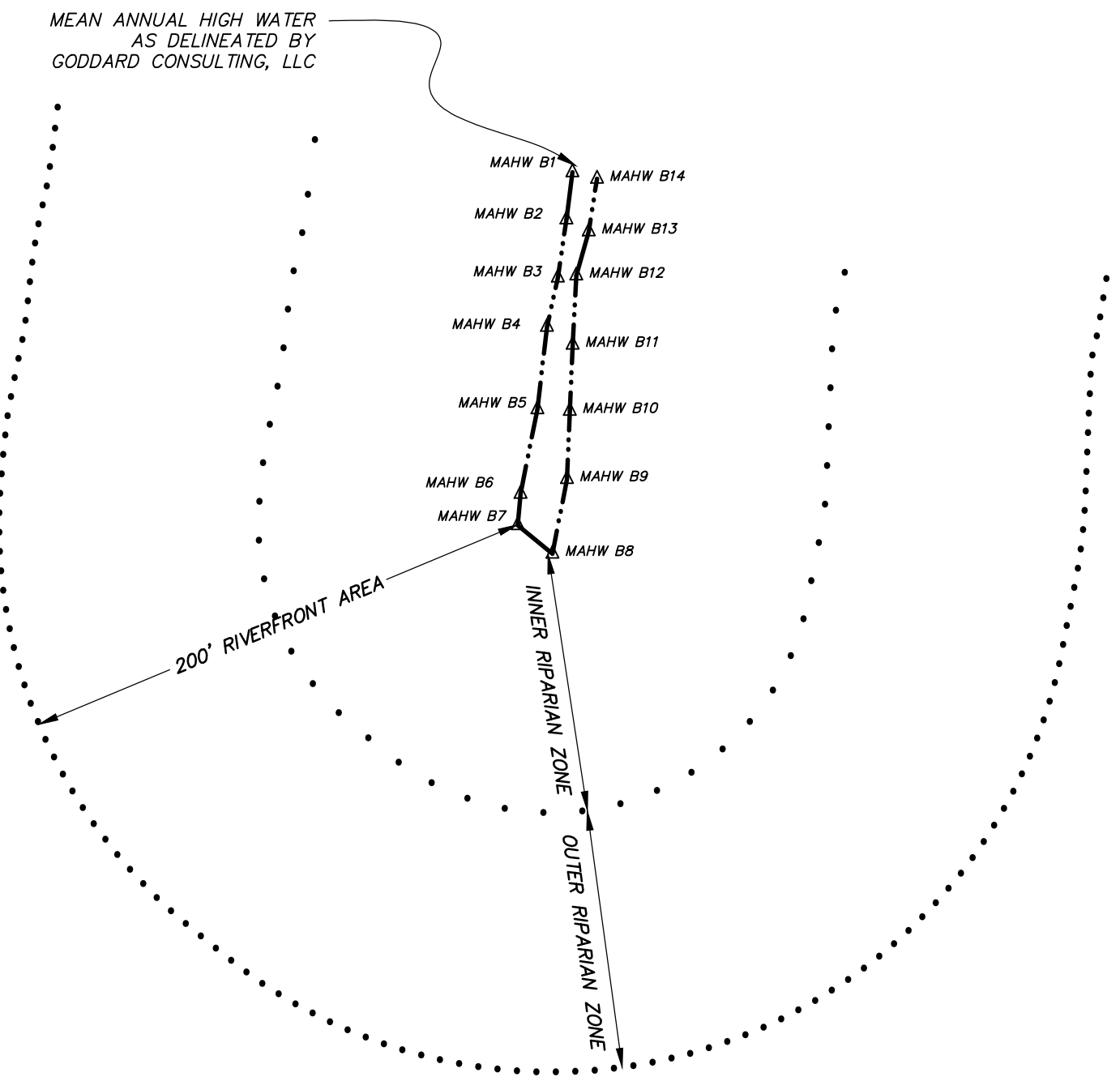
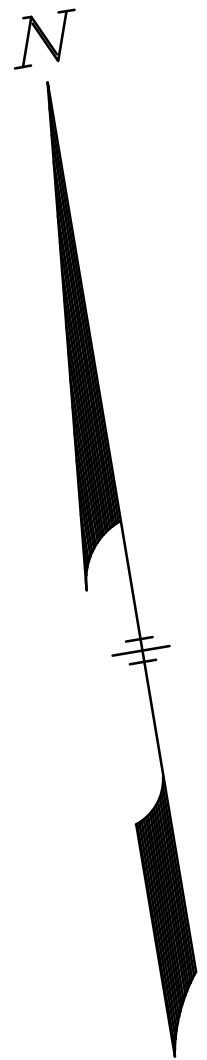
ISOLATED WETLAND  
AS DELINEATED BY  
GODDARD CONSULTING, LLC

BORDERING VEGETATED WETLAND  
AS DELINEATED BY  
GODDARD CONSULTING, LLC





**UTILITY NOTE:**  
ALL UNDERGROUND UTILITIES SHOWN HERE WERE COMPILED ACCORDING TO AVAILABLE RECORD PLANS FROM VARIOUS UTILITY COMPANIES AND PUBLIC AGENCIES AND ARE APPROXIMATE ONLY. ACTUAL LOCATIONS MUST BE DETERMINED IN THE FIELD BEFORE DESIGNING, EXCAVATING, BLASTING, INSTALLING, BACKFILLING, GRADING, PAVEMENT RESTORATION OR REPAIRING. ALL UTILITY COMPANIES, PUBLIC AND PRIVATE, MUST BE CONTACTED INCLUDING THOSE IN CONTROL OF UTILITIES NOT SHOWN ON THIS PLAN. SEE CHAPTER 370, ACTS OF 1963 MASS. WE ASSUME NO RESPONSIBILITY FOR DAMAGES INCURRED AS A RESULT OF UTILITIES OMITTED OR INACCURATELY SHOWN. BEFORE PLANNING FUTURE CONNECTIONS THE APPROPRIATE PUBLIC UTILITY ENGINEERING DEPARTMENT MUST BE CONSULTED. DIG SAFE TELEPHONE No. 1-888-344-7233.

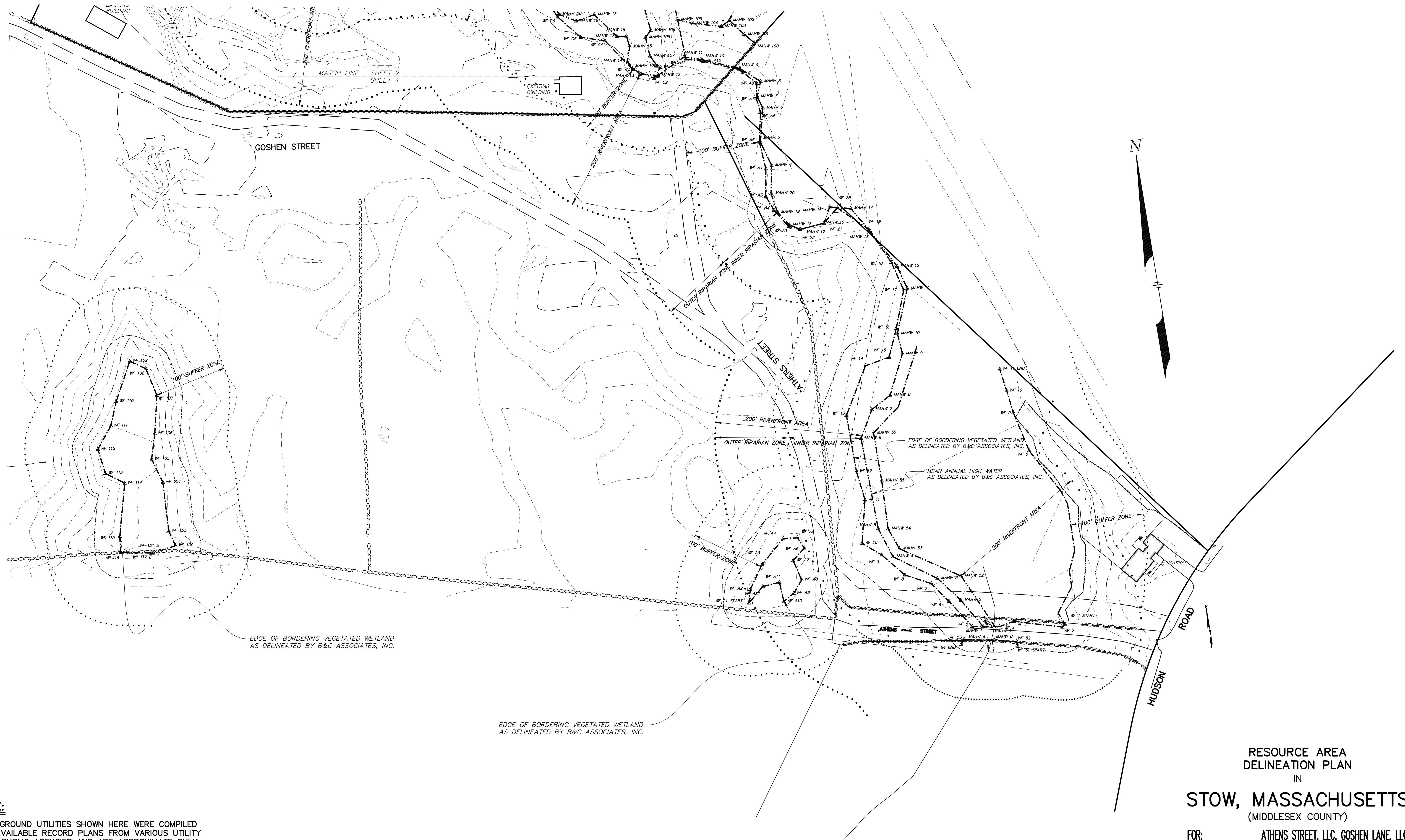


RESOURCE AREA  
DELINEATION PLAN  
IN  
**STOW, MASSACHUSETTS**  
(MIDDLESEX COUNTY)  
FOR: **ATHENS STREET, LLC, GOSHEN LANE, LLC**  
SCALE: 1"=60' DECEMBER 15, 2020



**STAMSKI AND MCNARY, INC.**  
1000 MAIN STREET ACTON, MASSACHUSETTS  
*ENGINEERING - PLANNING - SURVEYING*  
0 30 60 120 180 240 FT  
(3719C.ANRAD.dwg) Athens Street SM-3719C  
(SHEET 3 OF 6)





**UTILITY NOTE:**

ALL UNDERGROUND UTILITIES SHOWN HERE WERE COMPILED ACCORDING TO AVAILABLE RECORD PLANS FROM VARIOUS UTILITY COMPANIES AND PUBLIC AGENCIES AND ARE APPROXIMATE ONLY. ACTUAL LOCATIONS MUST BE DETERMINED IN THE FIELD BEFORE DESIGNING, EXCAVATING, BLASTING, INSTALLING, BACKFILLING, GRADING, PAVEMENT RESTORATION OR REPAIRING. ALL UTILITY COMPANIES, PUBLIC AND PRIVATE, MUST BE CONTACTED INCLUDING THOSE IN CONTROL OF UTILITIES NOT SHOWN ON THIS PLAN. SEE CHAPTER 370, ACTS OF 1963 MASS. WE ASSUME NO RESPONSIBILITY FOR DAMAGES INCURRED AS A RESULT OF UTILITIES OMITTED OR INACCURATELY SHOWN. BEFORE PLANNING FUTURE CONNECTIONS THE APPROPRIATE PUBLIC UTILITY ENGINEERING DEPARTMENT MUST BE CONSULTED. DIG SAFE TELEPHONE No. 1-888-344-7233.

RESOURCE AREA  
DELINEATION PLAN  
IN  
**STOW, MASSACHUSETTS**  
(MIDDLESEX COUNTY)

FOR: **ATHENS STREET, LLC, GOSHEN LANE, LLC**  
SCALE: 1"=60' DECEMBER 15, 2020

**STAMSKI AND MCNARY, INC.**  
1000 MAIN STREET ACTON, MASSACHUSETTS  
ENGINEERING - PLANNING - SURVEYING

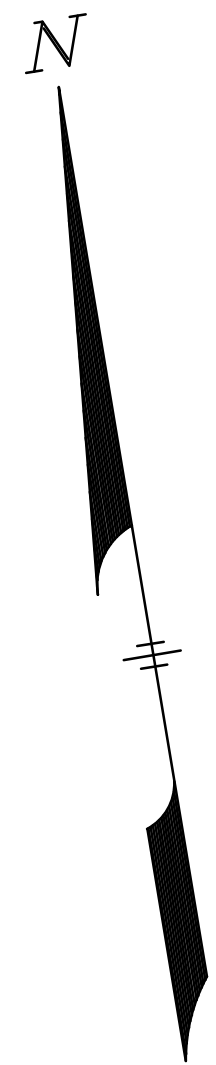
0 30 60 120 180 240 FT

(3719C.ANRAD.dwg) Athens Street SM-3719C  
(SHEET 4 OF 6)





MATCH LINE SHEET 6  
SHEET 5



EDGE OF BORDERING  
VEGETATED WETLANDS  
AS DELINEATED BY  
B&C ASSOCIATES, INC.

#### UTILITY NOTE:

ALL UNDERGROUND UTILITIES SHOWN HERE WERE COMPILED ACCORDING TO AVAILABLE RECORD PLANS FROM VARIOUS UTILITY COMPANIES AND PUBLIC AGENCIES AND ARE APPROXIMATE ONLY. ACTUAL LOCATIONS MUST BE DETERMINED IN THE FIELD BEFORE DESIGNING, EXCAVATING, BLASTING, INSTALLING, BACKFILLING, GRADING, PAVEMENT RESTORATION OR REPAIRING. ALL UTILITY COMPANIES, PUBLIC AND PRIVATE, MUST BE CONTACTED INCLUDING THOSE IN CONTROL OF UTILITIES NOT SHOWN ON THIS PLAN. SEE CHAPTER 370, ACTS OF 1963 MASS. WE ASSUME NO RESPONSIBILITY FOR DAMAGES INCURRED AS A RESULT OF UTILITIES OMITTED OR INACCURATELY SHOWN. BEFORE PLANNING FUTURE CONNECTIONS THE APPROPRIATE PUBLIC UTILITY ENGINEERING DEPARTMENT MUST BE CONSULTED. DIG SAFE TELEPHONE No. 1-888-344-7233.

AS SHOWN ON PLAN NO. 300 OF 1999

EDGE OF BORDERING  
VEGETATED WETLAND  
AS DELINEATED BY  
GODDARD CONSULTING, LLC

#### RESOURCE AREA DELINEATION PLAN IN

### STOW, MASSACHUSETTS (MIDDLESEX COUNTY)

FOR: ATHENS STREET, LLC, GOSHEN LANE, LLC  
SCALE: 1"=60' DECEMBER 15, 2020

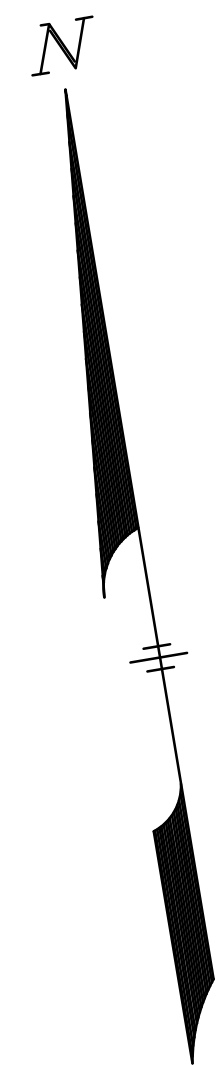


**STAMSKI AND MCNARY, INC.**  
1000 MAIN STREET ACTON, MASSACHUSETTS  
ENGINEERING - PLANNING - SURVEYING

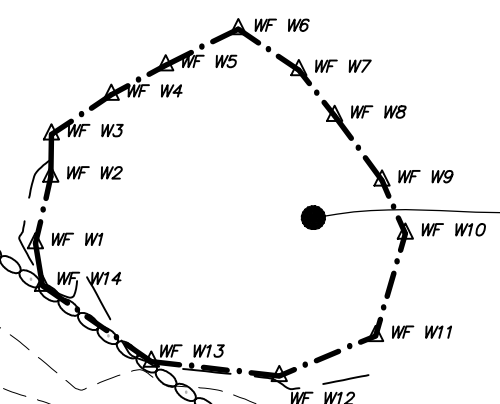
0 30 60 120 180 240 FT

(3719C.ANRAD.dwg) Athens Street SM-3719C  
(SHEET 5 OF 6)

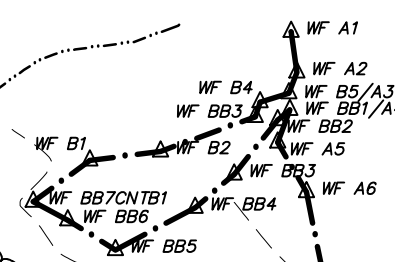




MAPLE STREET  
VARIABLE WIDTH



ISOLATED WETLAND  
AS DELINEATED BY  
GODDARD CONSULTING, LLC



EDGE OF BORDERING  
VEGETATED WETLAND  
AS DELINEATED BY  
GODDARD CONSULTING, LLC

EDGE OF BORDERING  
VEGETATED WETLAND  
AS DELINEATED BY  
GODDARD CONSULTING, LLC

APPROXIMATE LOCATION  
GOSHEN LANE RIGHT OF WAY  
AS SHOWN ON PLAN No. 306 OF 1996

#### UTILITY NOTE:

ALL UNDERGROUND UTILITIES SHOWN HERE WERE COMPILED ACCORDING TO AVAILABLE RECORD PLANS FROM VARIOUS UTILITY COMPANIES AND PUBLIC AGENCIES AND ARE APPROXIMATE ONLY. ACTUAL LOCATIONS MUST BE DETERMINED IN THE FIELD BEFORE DESIGNING, EXCAVATING, BLASTING, INSTALLING, BACKFILLING, GRADING, PAVEMENT RESTORATION OR REPAIRING. ALL UTILITY COMPANIES, PUBLIC AND PRIVATE, MUST BE CONTACTED INCLUDING THOSE IN CONTROL OF UTILITIES NOT SHOWN ON THIS PLAN. SEE CHAPTER 370, ACTS OF 1963 MASS. WE ASSUME NO RESPONSIBILITY FOR DAMAGES INCURRED AS A RESULT OF UTILITIES OMITTED OR INACCURATELY SHOWN. BEFORE PLANNING FUTURE CONNECTIONS THE APPROPRIATE PUBLIC UTILITY ENGINEERING DEPARTMENT MUST BE CONSULTED. DIG SAFE TELEPHONE No. 1-888-344-7233.

MATCH LINE SHEET 6  
SHEET 5

## RESOURCE AREA DELINEATION PLAN IN STOW, MASSACHUSETTS (MIDDLESEX COUNTY)

FOR: ATHENS STREET, LLC, GOSHEN LANE, LLC  
SCALE: 1"=60' DECEMBER 15, 2020

**STAMSKI AND MCNARY, INC.**  
1000 MAIN STREET ACTON, MASSACHUSETTS  
ENGINEERING - PLANNING - SURVEYING

0 30 60 120 180 240 FT

(3719C.ANRAD.dwg) Athens Street SM-3719C  
(SHEET 6 OF 6)

