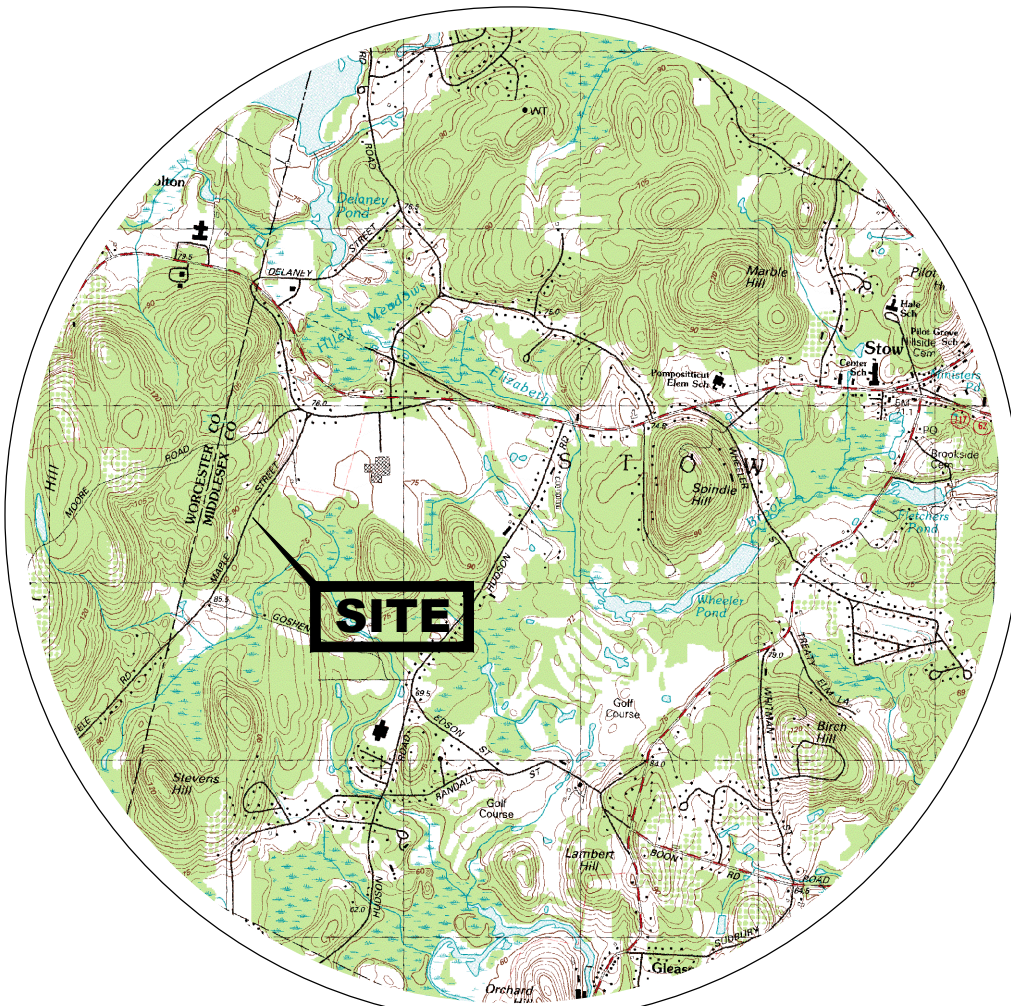
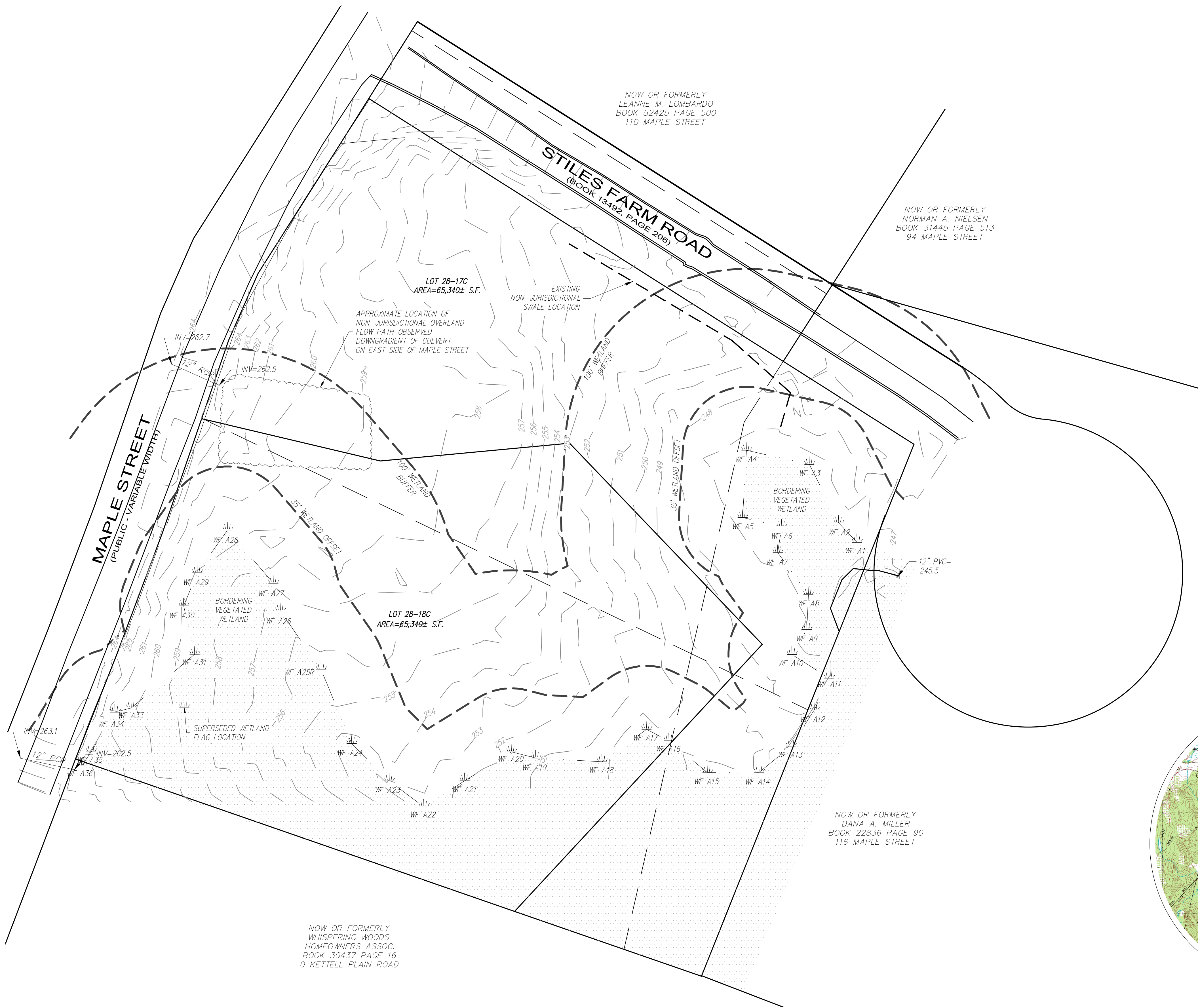


GENERAL NOTES:

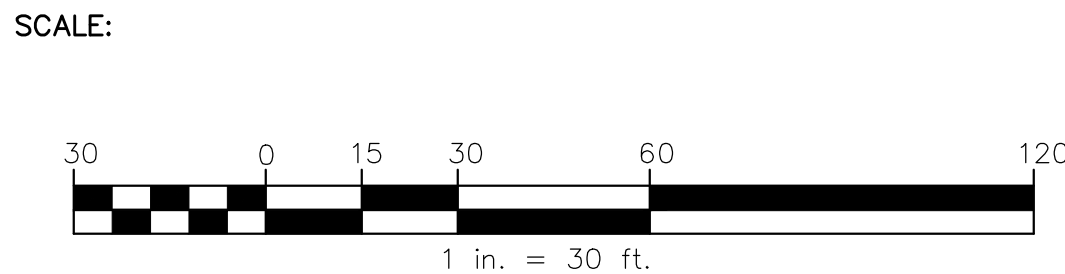
1. TOPOGRAPHIC INFORMATION SHOWN ON THIS PLAN WAS PREPARED BY MERIDIAN ASSOCIATES BASED ON AN ON-THE-GROUND SURVEY PERFORMED IN AUGUST OF 2023.
2. PROPERTY LINE INFORMATION SHOWN ON THIS PLAN WAS PREPARED BY MERIDIAN ASSOCIATES . BASED ON AN ON-THE-GROUND SURVEY PERFORMED IN SEPTEMBER 2022 AND RECORDED PLANS AND DEEDS AND SUPPLEMENTED BY TOPOLOGICAL SURVEY PERFORMED BY DILLIS & ROY CIVIL DESIGN GROUP, INC IN NOVEMBER OF 2023.
3. ELEVATIONS REFER TO NAVD88.
4. WETLAND RESOURCE AREAS WERE FIELD DELINEATED BY LEC ENVIRONMENTAL CONSULTANTS INC. IN JULY 2021 AND JANUARY 2024
5. EXISTING UTILITIES SHOWN ON THIS PLAN WERE COMPILED FROM FIELD MEASUREMENT AND RECORD PLANS. THE UTILITIES SHOWN ON THIS PLAN ARE FOR REFERENCE ONLY AND SHOULD NOT BE ASSUMED TO BE CORRECT NOR SHOULD IT BE ASSUMED THAT THE UTILITIES SHOWN ARE THE ONLY UTILITIES LOCATED ON OR NEAR THE SITE. THE CONTRACTOR SHALL CALL DIG SAFE 1-888-DIG-SAFE PRIOR TO CONSTRUCTION IN ACCORDANCE WITH STATE LAWS.



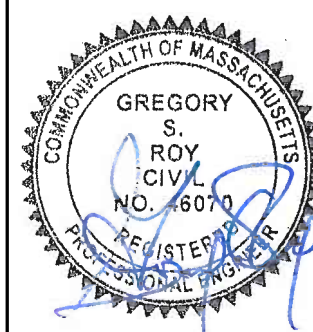
CIVIL ENGINEERS LAND SURVEYORS WETLAND CONSULTANTS
CORPORATE OFFICE: 978-779-6091 CONCORD OFFICE:
1 MAIN STREET, SUITE 1 100 MAIN ST., SUITE 310
LUNENBURG, MA 01462 www.dillisandroy.com CONCORD, MA 01742

OWNER:
NORTHEAST VENTURE GROUP
& REALTY LLC
220 NORTH MAIN SREET
NATICK, MA 01760

APPLICANT:
NORTHEAST VENTURE GROUP
& REALTY LLC
220 NORTH MAIN SREET
NATICK, MA 01760



COPYRIGHT DILLIS & ROY CIVIL DESIGN GROUP, INC 2024



STAMP DATE: 4/4/24

DATE: 3/1/24
DESIGN BY: GSR
DRAWN BY: MMK
CHECKED BY: GSR

EXISTING CONDITIONS PLAN
MAPLE STREET
STOW, MASSACHUSETTES

NO.	DATE	DESCRIPTION	BY
1.	3/25/24	REVISED PER SITE WALK & STAFF COMMENTS	RWP
2.	4/4/24	REVISED PER CONSERVATION COMMISSION COMMENTS	RWP

JOB NO. 7799
DRAWING NO. 7799-EXIST
SHEET NO. 1 OF 1